

O.D.O.T. DISTRICT 2 SURVEY OFFICE (USE ONLY)

PERSONNEL _____

REFERENCE NO. 5

SHEET 5 OF 13

NOTES NIESE DATE 4/14/23

ROUTE SR 120

H.C. NIESE WEATHER SUNNY

COUNTY LUCAS

R.C. AUBLE TEMP. 85°

TOWNSHIP SYLVANIA

DWG BY RHOADES PID 102940

SECTION 23

T 9 S R 6 E

TYPE MONUMENT MAG/WASHER

ON SURFACE - ~~BELOW~~ ON

OFFSET Q PAVEMENT 0.4' ~~LT~~ : RT

37.2' TO LT EDGE PAVEMENT

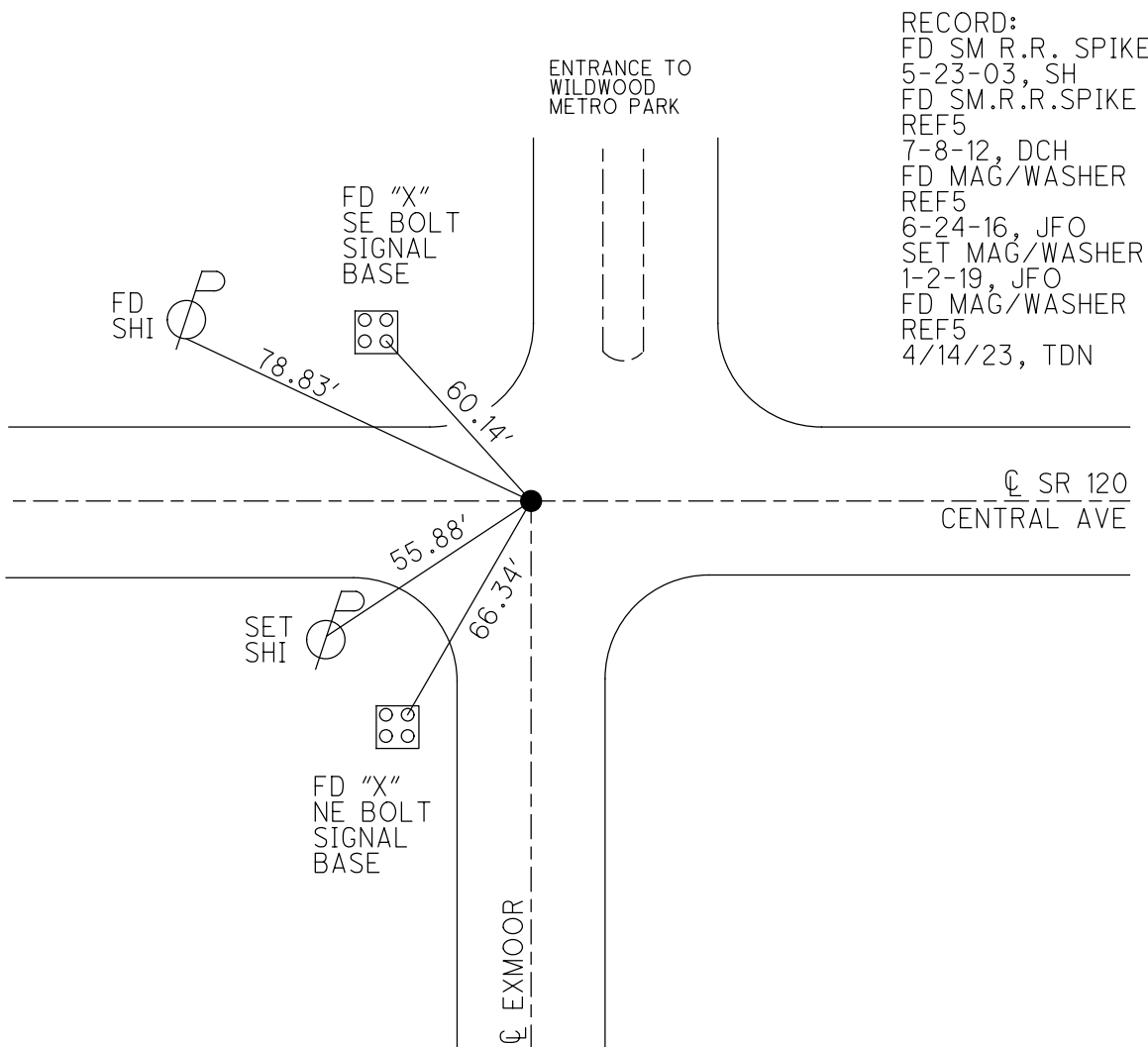
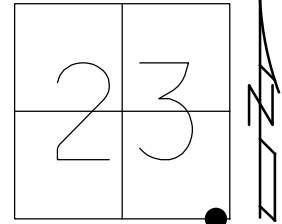
STATION: 586+45.36

HORIZ.DATUM: NAD83 2011

GEOID: NAVD88 2018

GRID: NORTHING: 734473.217

EASTING: 1650405.818



RECORD:
 FD SM R.R. SPIKE
 5-23-03, SH
 FD SM.R.R.SPIKE
 REF5
 7-8-12, DCH
 FD MAG/WASHER
 REF5
 6-24-16, JFO
 SET MAG/WASHER
 1-2-19, JFO
 FD MAG/WASHER
 REF5
 4/14/23, TDN

O.D.O.T. DISTRICT 2 SURVEY OFFICE (USE ONLY)

PERSONNEL

REFERENCE NO. 5

SHEET 5 OF 11

NOTES LEU

DATE 6-27-17

ROUTE SR 120

H.C. O'DONNELL

WEATHER CLEAR

COUNTY LUCAS

R.C. LEU

TEMP. 60°

TOWNSHIP SYLVANIA

RHOADES, CARSON

SECTION 23

DWG BY JAMES PID 95717

T 9 S R 6 E

TYPE MONUMENT MAG/WASHER

ON SURFACE - ~~BELOW~~ ON

OFFSET Q PAVEMENT 0.4' ~~LT~~ : RT

37.2' TO LT EDGE PAVEMENT

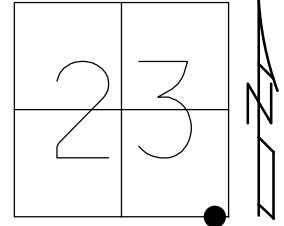
STATION: 586+45.36

HORZ.DATUM: NAD83 2011

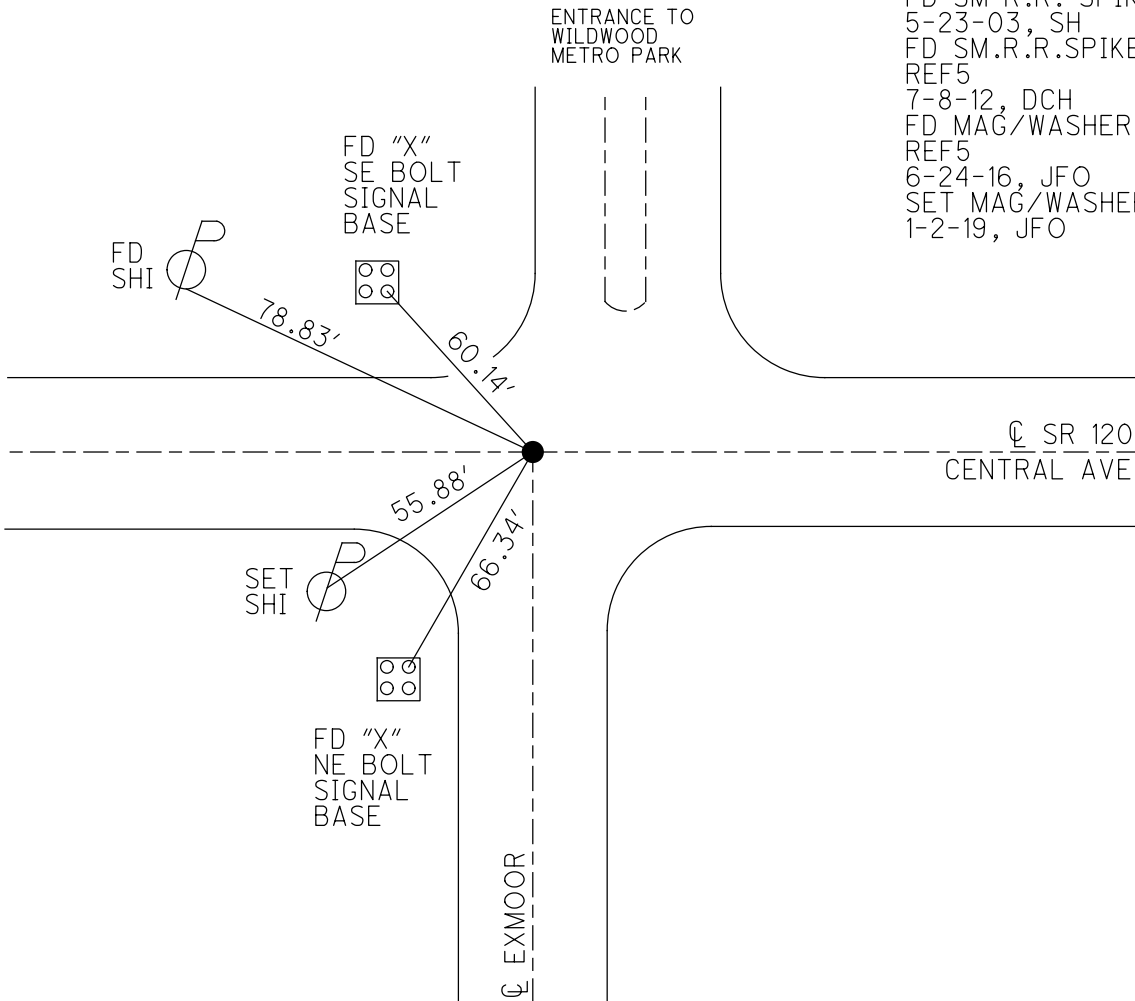
GEOID: NAVD88 2012A

GRID: NORTHING: 734473.252

EASTING: 1650405.857



RECORD:
 FD SM R.R. SPIKE
 5-23-03, SH
 FD SM.R.R.SPIKE
 REF5
 7-8-12, DCH
 FD MAG/WASHER
 REF5
 6-24-16, JFO
 SET MAG/WASHER
 1-2-19, JFO



O.D.O.T. DISTRICT 2 SURVEY OFFICE

PERSONNEL

REFERENCE NO. 5

SHEET 5 OF 8

NOTES S. Hoffmann

H.C. A. Brown

DATE 5-23-2003

ROUTE SR 120

R.C. C. Braumart

WEATHER OVERCAST

COUNTY Lucas

M. Glass

TEMP. 60°

TOWNSHIP Sylvania

SECTION 23

T. 9 S. R. 6 E

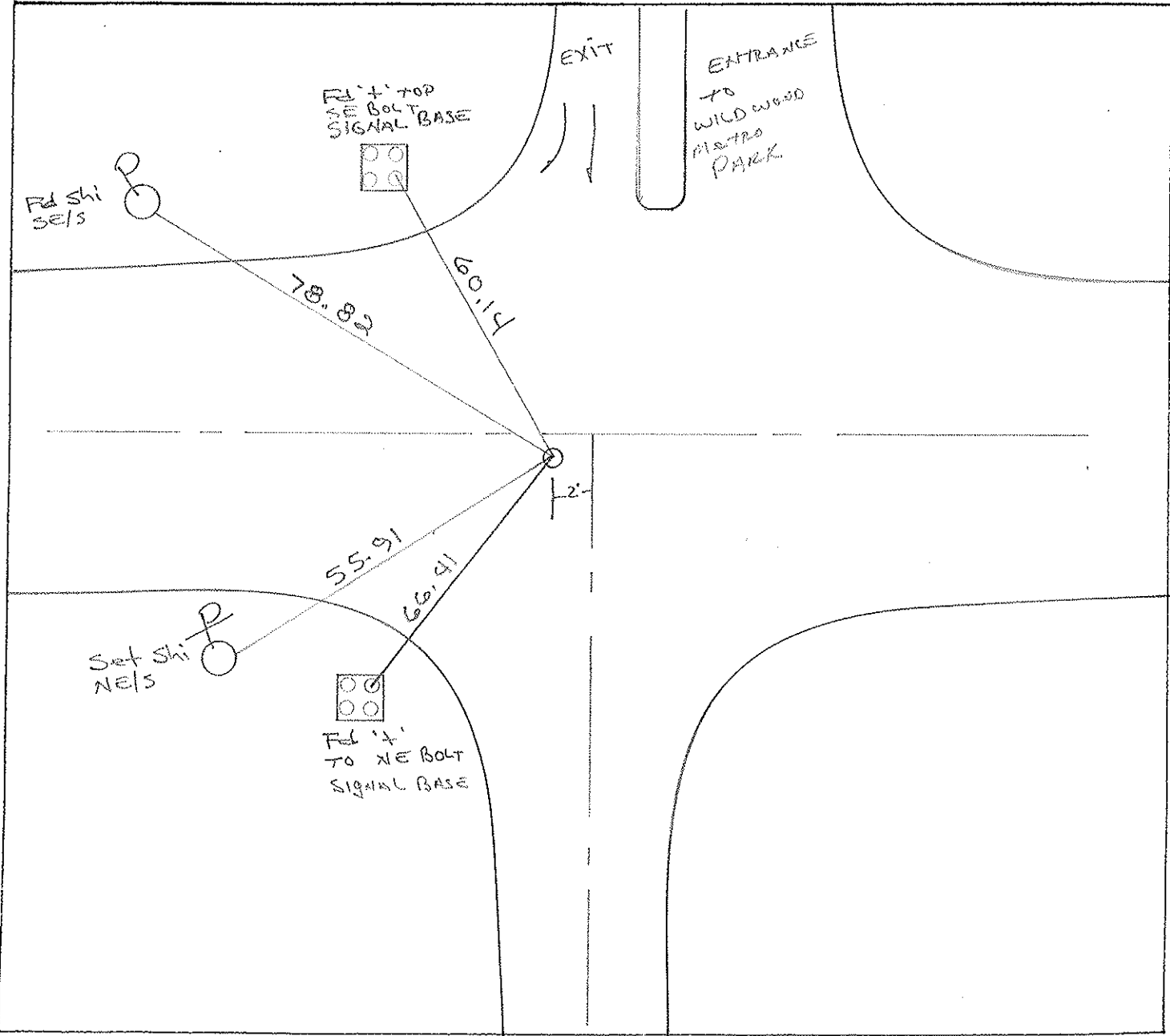
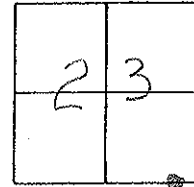
TYPE MONUMENT Small R.R. Spike

ON SURFACE - BELOW yes

LEFT - CL PAV'T. - RIGHT 0.4'

372 TO Lt EDGE PAVEMENT

S.L.M. 586+55



O.D.O.T. DISTRICT 2 SURVEY OFFICE

PERSONNEL

REFERENCE NO. 5

SHEET 5 OF 8

NOTES LOEHRKE

H.C. COPDES

DATE 7-1-93

ROUTE S.R. 120

R.C. CANTERBURY

WEATHER Cloudy

COUNTY LUCAS

ROMETO

TEMP. +80

TOWNSHIP Sylvania

SECTION 24

ok, 8-11-93

T 9 S R 6 E

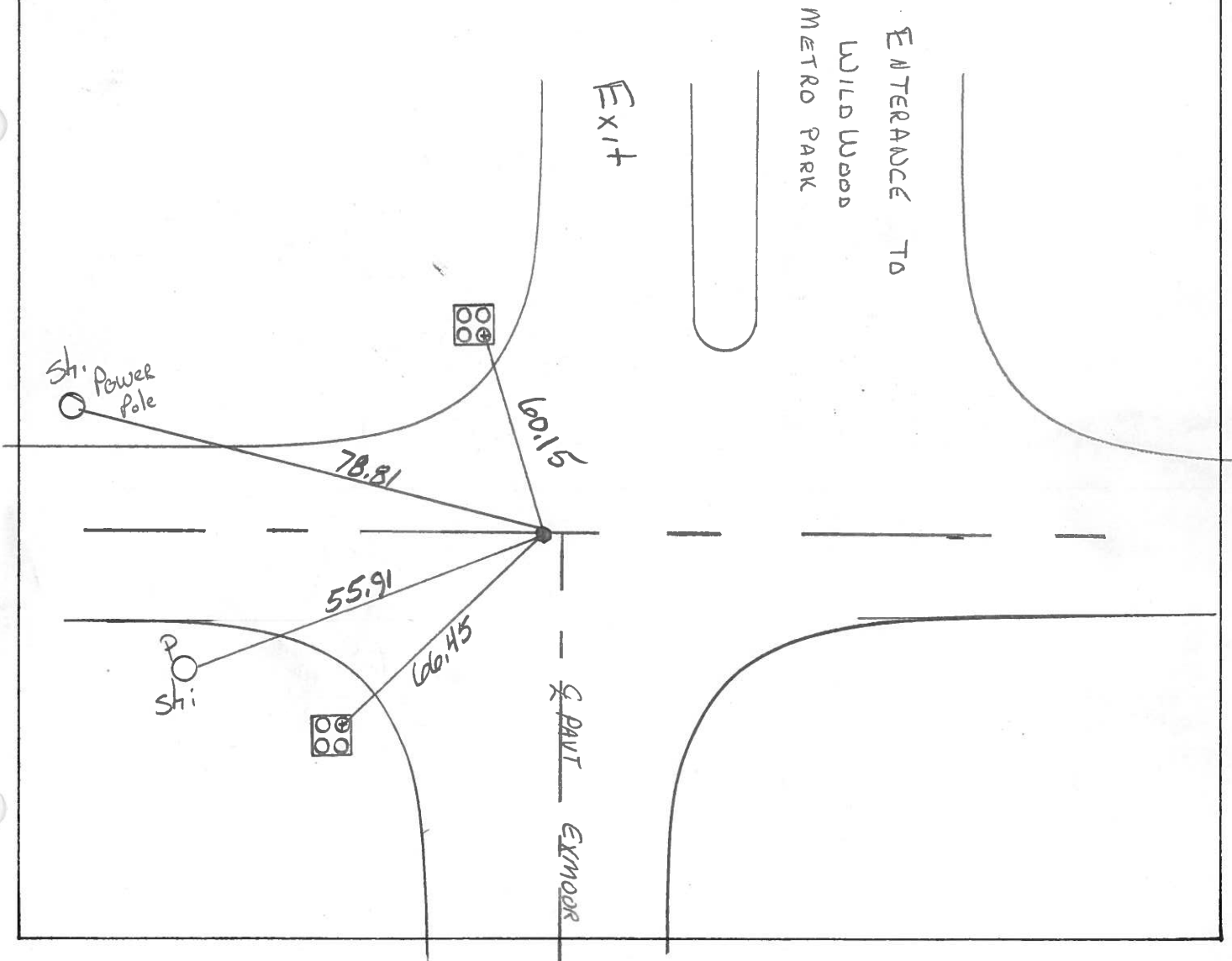
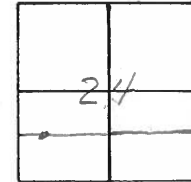
TYPE MONUMENT Sm. RR Spike w/ "+" on Top

ON SURFACE - BELOW yes

LEFT - 0 PAV'T. - RIGHT 6.4

37.2 TO Lt. EDGE PAVEMENT

S.L.M. 586+55



PERSONNEL	TITLE	PERSONNEL	TITLE
Tomic			
Nassar			
Vanyo			
Granata			

COUNTY Lucas DATE Sept. 7, 1972
 S. R. U.S. 120 WEATHER _____
 SEC. _____ TEMP. _____

DESCRIPTION Central ave LEFT CENTER LINE RIGHT JOB NO. _____

