

O.D.O.T. DISTRICT 2 SURVEY OFFICE (USE ONLY)

PERSONNEL

REFERENCE NO. 6

SHEET 7 OF 13

NOTES ASTON

DATE 8/31/23

ROUTE SR 120

H.C. NIESE

WEATHER FAIR

COUNTY LUCAS

R.C. AUBLE

TEMP. 66°

TOWNSHIP SYLVANIA

RHOADES

DWG BY RHOADES PID 102940

SECTION 24

T 9 S R 6 E

TYPE MONUMENT MAG/WASHER

ON SURFACE - ~~BELOW~~ ON

OFFSET ☉ PAVEMENT ON LT : RT

27.4' TO LT EDGE PAVEMENT

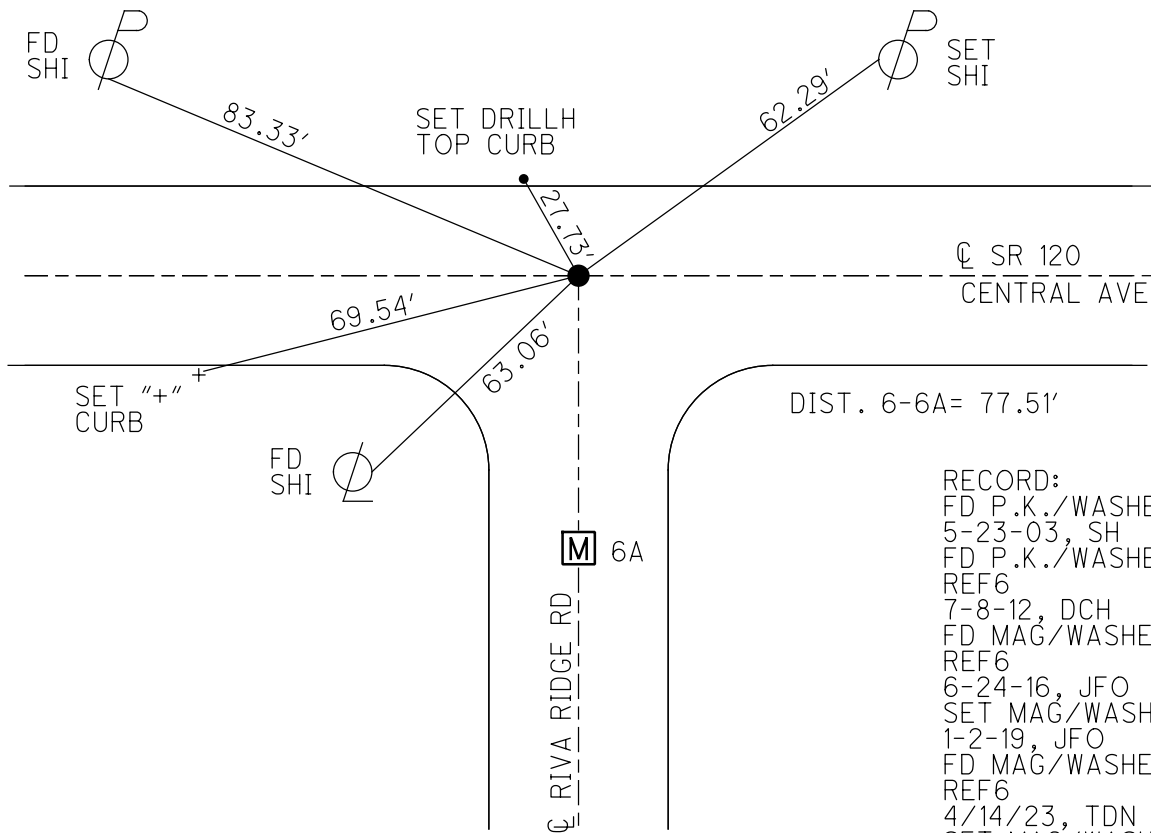
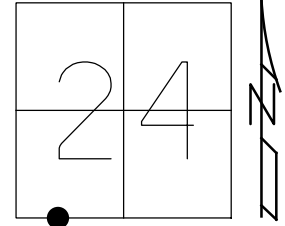
STATION: 595+52.23

HORZ.DATUM: NAD83 2011

GEOID: NAVD88 2018

GRID: NORTHING: 764490.361

EASTING: 1651312.537



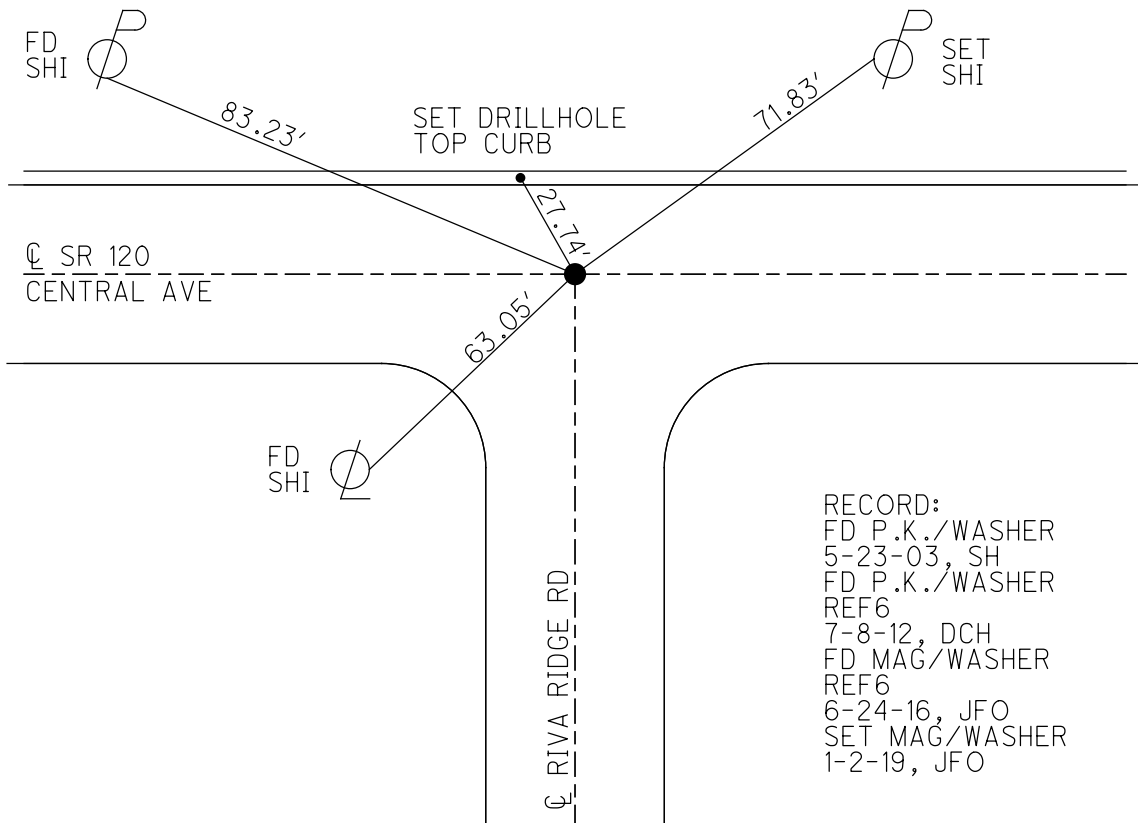
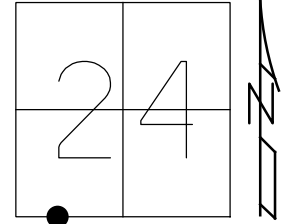
RECORD:
 FD P.K./WASHER
 5-23-03, SH
 FD P.K./WASHER
 REF6
 7-8-12, DCH
 FD MAG/WASHER
 REF6
 6-24-16, JFO
 SET MAG/WASHER
 1-2-19, JFO
 FD MAG/WASHER
 REF6
 4/14/23, TDN
 SET MAG/WASHER
 REF6
 8/31/23, TDN

O.D.O.T. DISTRICT 2 SURVEY OFFICE (USE ONLY)

PERSONNEL _____ REFERENCE NO. 6 SHEET 6 OF 11
 NOTES LEU DATE 6-27-17 ROUTE SR 120
 H.C. O'DONNELL WEATHER CLEAR COUNTY LUCAS
 R.C. LEU TEMP. 60° TOWNSHIP SYLVANIA
RHOADES, CARSON SECTION 24
 DWG BY JAMES PID 95717 T 9 S R E 6 E

TYPE MONUMENT MAG/WASHER
 ON SURFACE - ~~BELOW~~ ON
 OFFSET Q PAVEMENT ON LT : RT
27.4' TO LT EDGE PAVEMENT
 STATION: 595+52.23

HORIZ.DATUM: NAD83 2011 GEOID: NAVD88 2012A
 GRID: NORTHING: 764490.385 EASTING: 1651312.561

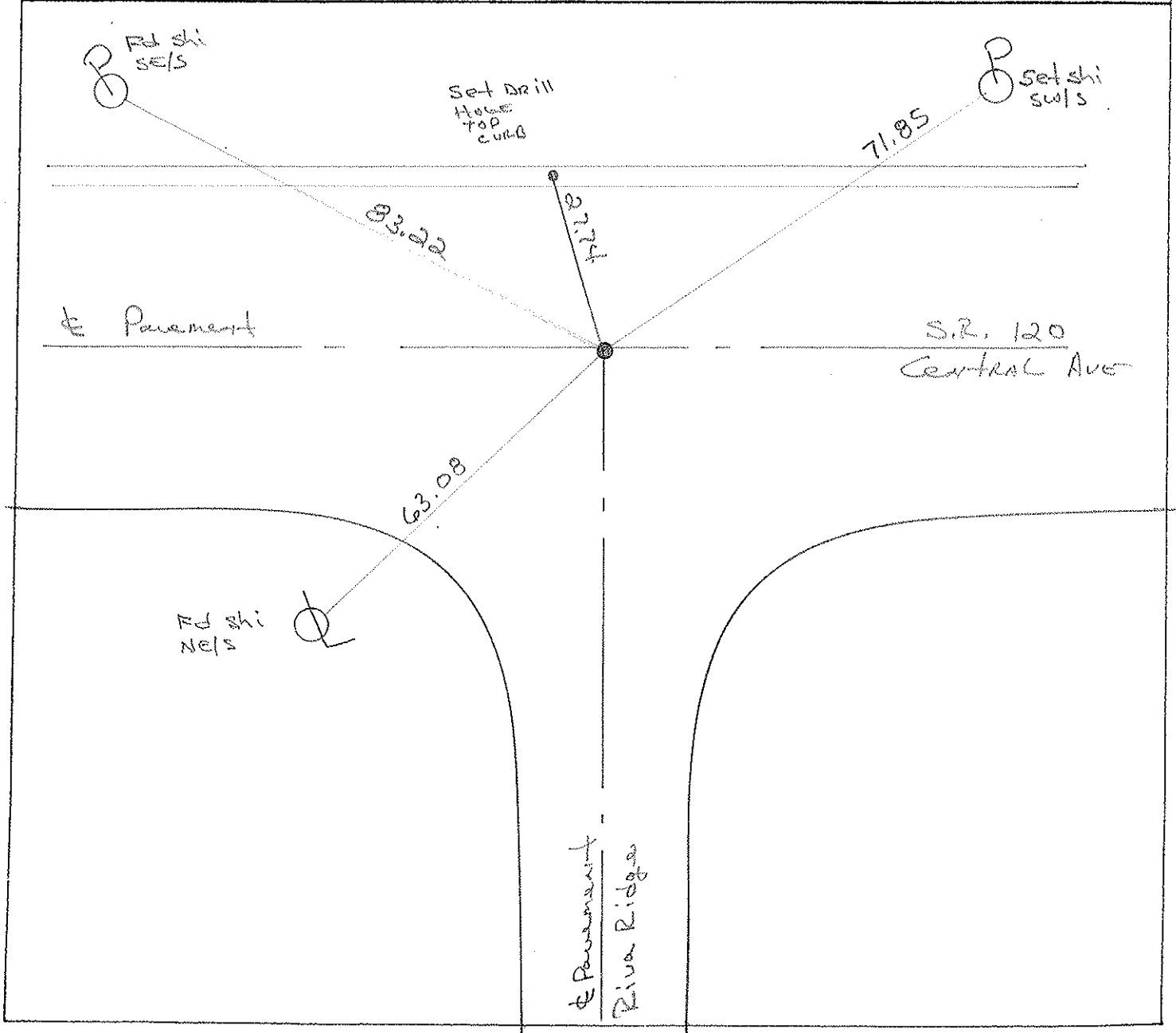
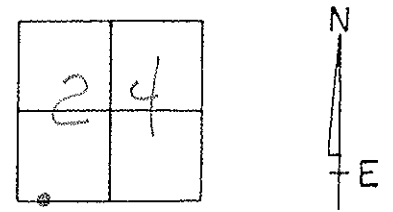


O.D.O.T. DISTRICT 2 SURVEY OFFICE

PERSONNEL _____ REFERENCE NO. 6 SHEET 6 OF 8

NOTES S. HOFFMAN
 H.C. A. Brown DATE 5-23-2003 ROUTE SR 120
 R.C. C. Beaumont WEATHER Light Rain COUNTY LUCAS
M. GLASS TEMP. 60° TOWNSHIP Sylvania
 SECTION 24
T9 SR 6 E

TYPE MONUMENT P.K. w/washer
 ON SURFACE - BELOW yes
 LEFT - < PAV'T. - RIGHT yes
27.4 TO Lt. EDGE PAVEMENT
 S.L.M. 595+65



O.D.O.T. DISTRICT 2 SURVEY OFFICE

PERSONNEL

REFERENCE NO. 6

SHEET 6 OF 8

NOTES LOENRKE

H.C. CORNES

DATE 7-1-93

ROUTE SR 120

R.C. CANTERBURY

WEATHER CLOUDY

COUNTY LUCAS

ROMETO

TEMP. +80

TOWNSHIP Sylvania

SECTION 24

T 9 S R 6 E

Set P.K./WASHER
8-11-93

TYPE MONUMENT R.R. Spike

ON SURFACE - BELOW Yes

LEFT - ☉ PAV'T. - RIGHT Yes

270 TO L EDGE PAVEMENT

S.L.M. 595 +65

