

O.D.O.T. DISTRICT 2 SURVEY OFFICE (USE ONLY)

PERSONNEL

REFERENCE NO. 7

SHEET 9 OF 13

NOTES NIESE

DATE 4/14/23

ROUTE SR 120

H.C. NIESE

WEATHER SUNNY

COUNTY LUCAS

R.C. AUBLE

TEMP. 85°

TOWNSHIP SYLVANIA

SECTION 24

DWG BY RHOADES PID 102940

T 9 S R 6 E

TYPE MONUMENT MONBOX W/1" IPIN

ON SURFACE - ~~BELOW~~ ON

OFFSET Q PAVEMENT ON LT : RT

27.1' TO LT EDGE PAVEMENT

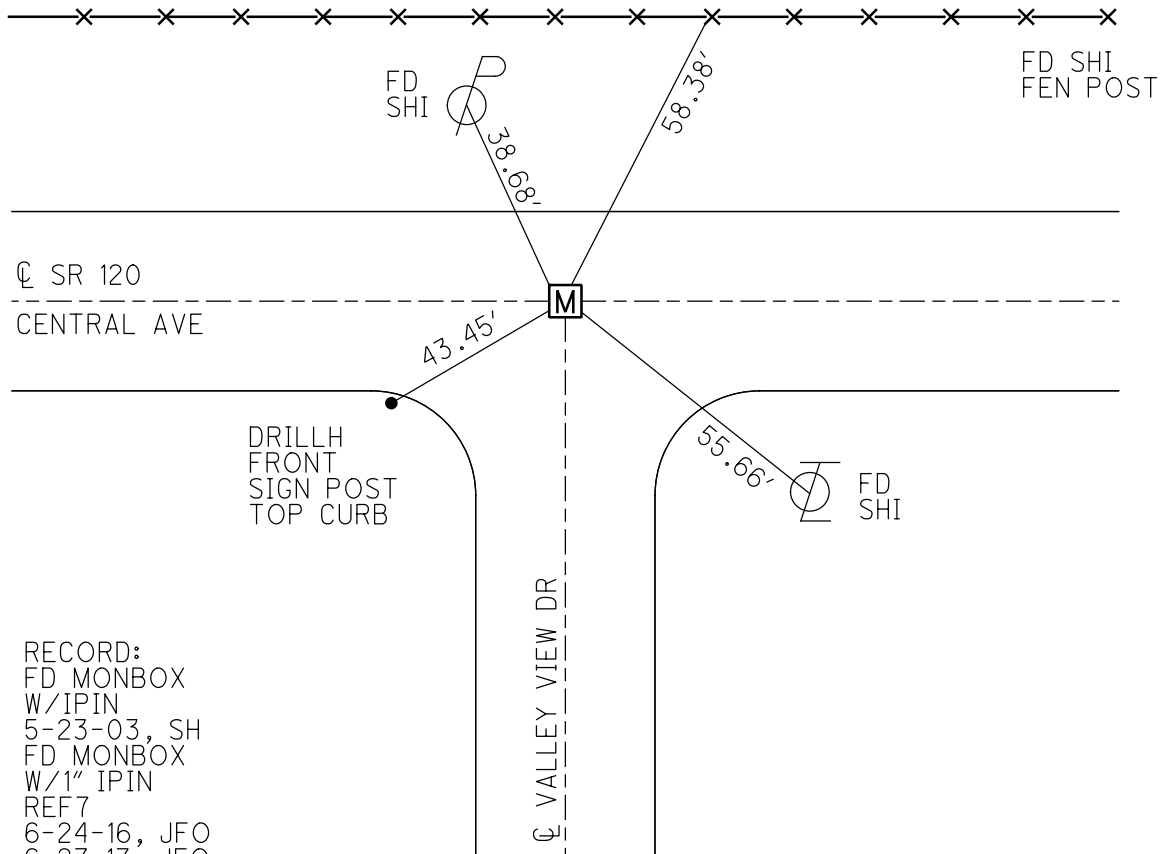
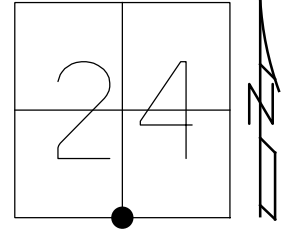
STATION: 606+16

HORZ. DATUM: NAD83 2011

GEOID: NAVD88 2018

GRID: NORTHING: 734513.528

EASTING: 1652376.258



RECORD:  
 FD MONBOX  
 W/1" IPIN  
 5-23-03, SH  
 FD MONBOX  
 W/1" IPIN  
 REF7  
 6-24-16, JFO  
 6-27-17, JFO  
 REF7  
 4/14/23, TDN

O.D.O.T. DISTRICT 2 SURVEY OFFICE (USE ONLY)

PERSONNEL

REFERENCE NO. 7

SHEET 7 OF 11

NOTES HOFFMAN  
 H.C. BROWN  
 R.C. BEAUMONT  
GLASS

DATE 5/23/0  
 WEATHER LIGHT RAIN  
 TEMP. 60°

ROUTE SR 120  
 COUNTY LUCAS  
 TOWNSHIP SYLVANIA  
 SECTION 24

DWG BY JAMES PID 59717

T 9 S R 6 E

TYPE MONUMENT MONBOX W/ IPIN

ON SURFACE - ~~BELOW~~ ON

OFFSET  $\odot$  PAVEMENT ON LT : RT

27.1' TO LT EDGE PAVEMENT

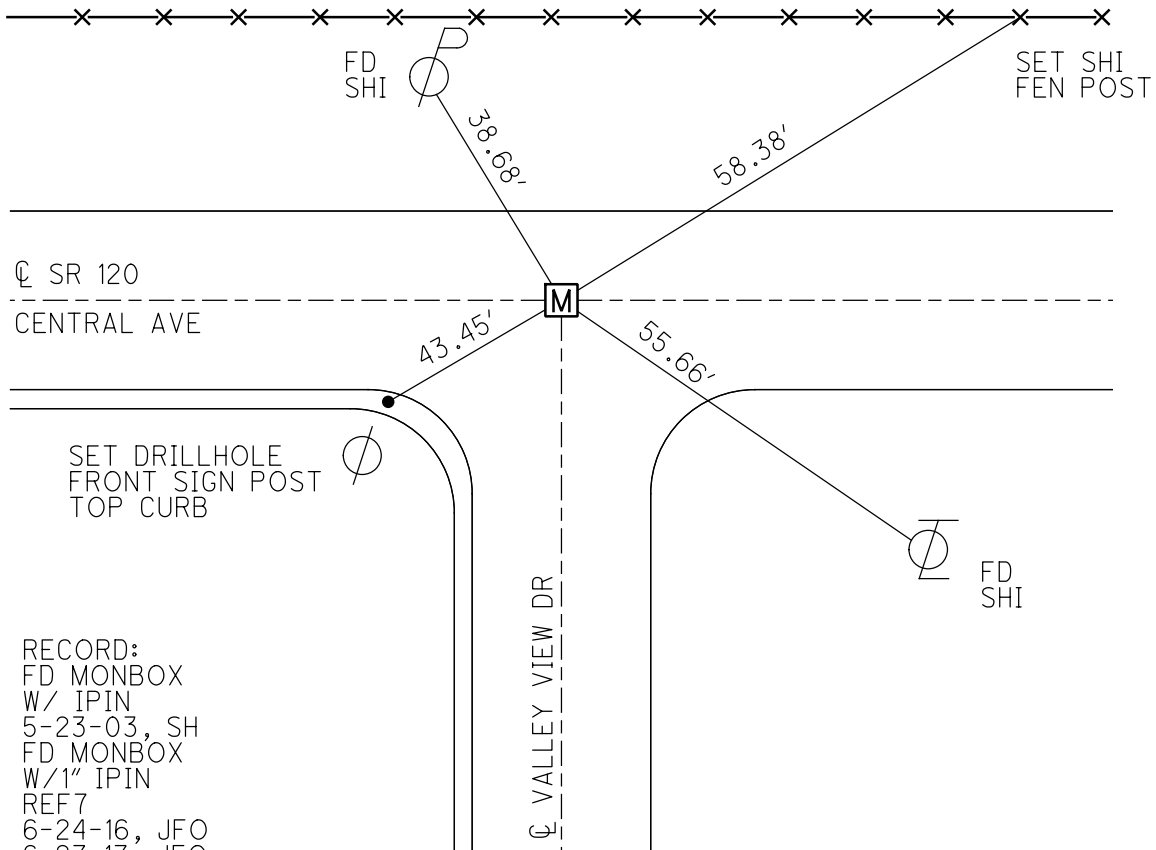
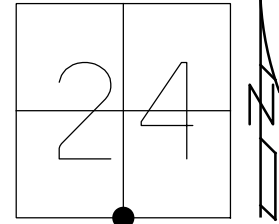
STATION: 606+16

HORZ. DATUM: NAD83 2011

GEOID: NAVD88 2012A

GRID: NORTHING: 734513.560

EASTING: 1652376.224



RECORD:  
 FD MONBOX  
 W/ IPIN  
 5-23-03, SH  
 FD MONBOX  
 W/1" IPIN  
 REF7  
 6-24-16, JFO  
 6-27-17, JFO

# O.D.O.T. DISTRICT 2 SURVEY OFFICE

PERSONNEL

REFERENCE NO. 7

SHEET 7 OF 8

NOTES S. Hoffman

H.C. A. Brown

R.C. C. Beaumont

M. Glass

DATE 5-23-2003

WEATHER Light Rain

TEMP. 60°

ROUTE SR 120

COUNTY Lucas

TOWNSHIP Sylvania

SECTION 24

T9 SR 6 E

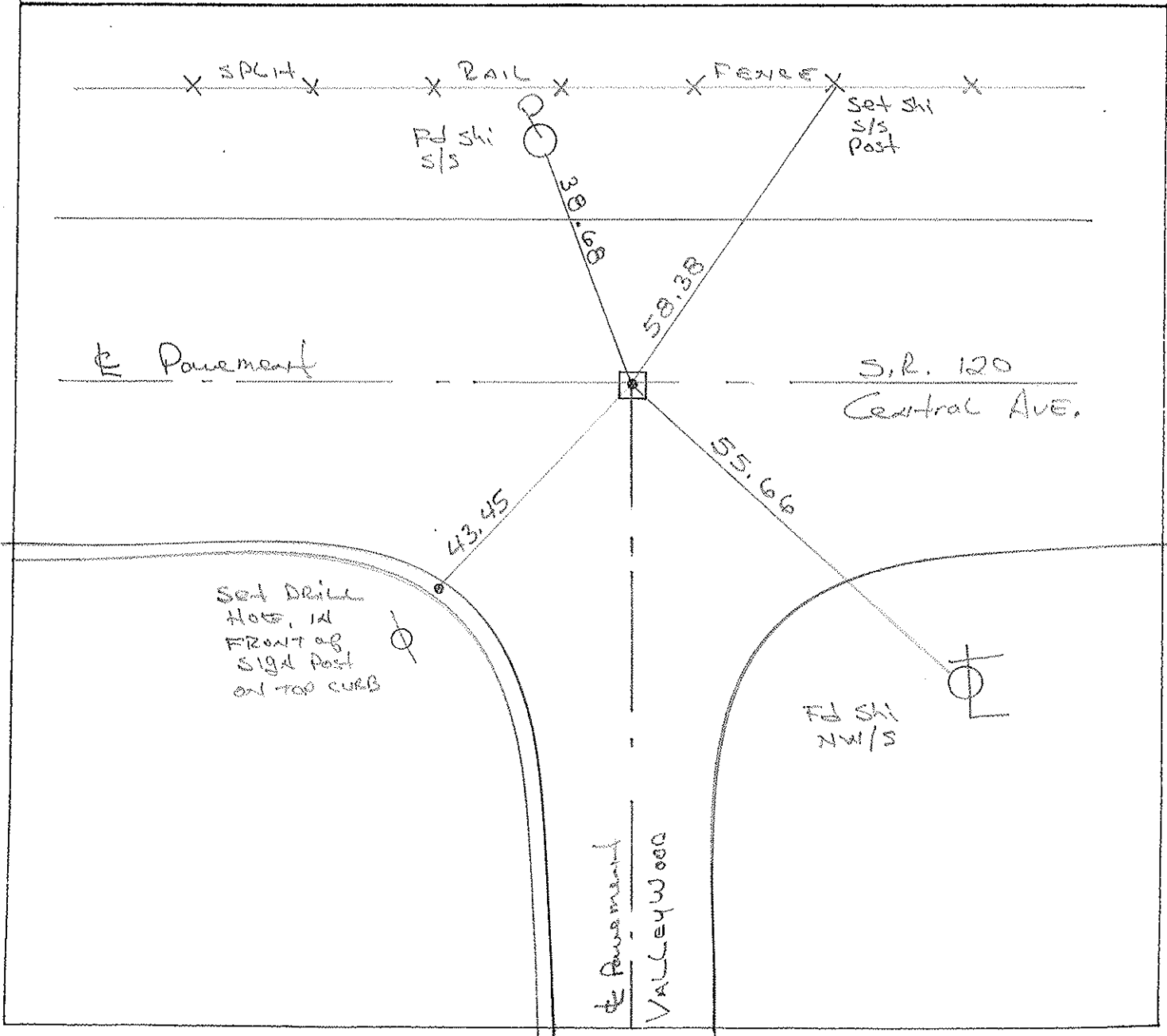
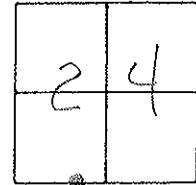
TYPE MONUMENT Monument Box w/Iron Pin

ON SURFACE - BELOW yes

~~LEFT - & PAV'T. - RIGHT~~ yes

27.1 TO LT EDGE PAVEMENT

S.L.M. 606 + 27



# O.D.O.T. DISTRICT 2 SURVEY OFFICE

PERSONNEL \_\_\_\_\_

REFERENCE NO. 7

SHEET 7 OF 8

NOTES LOEHRKE

H.C. COPDES

DATE 7-1-93

ROUTE S.R. 120

R.C. CANTERBURY

WEATHER CLOUDY

COUNTY LUCAS

ROMETO

TEMP. +80

TOWNSHIP Sylvania

SECTION 24

T 9 S R 6 E

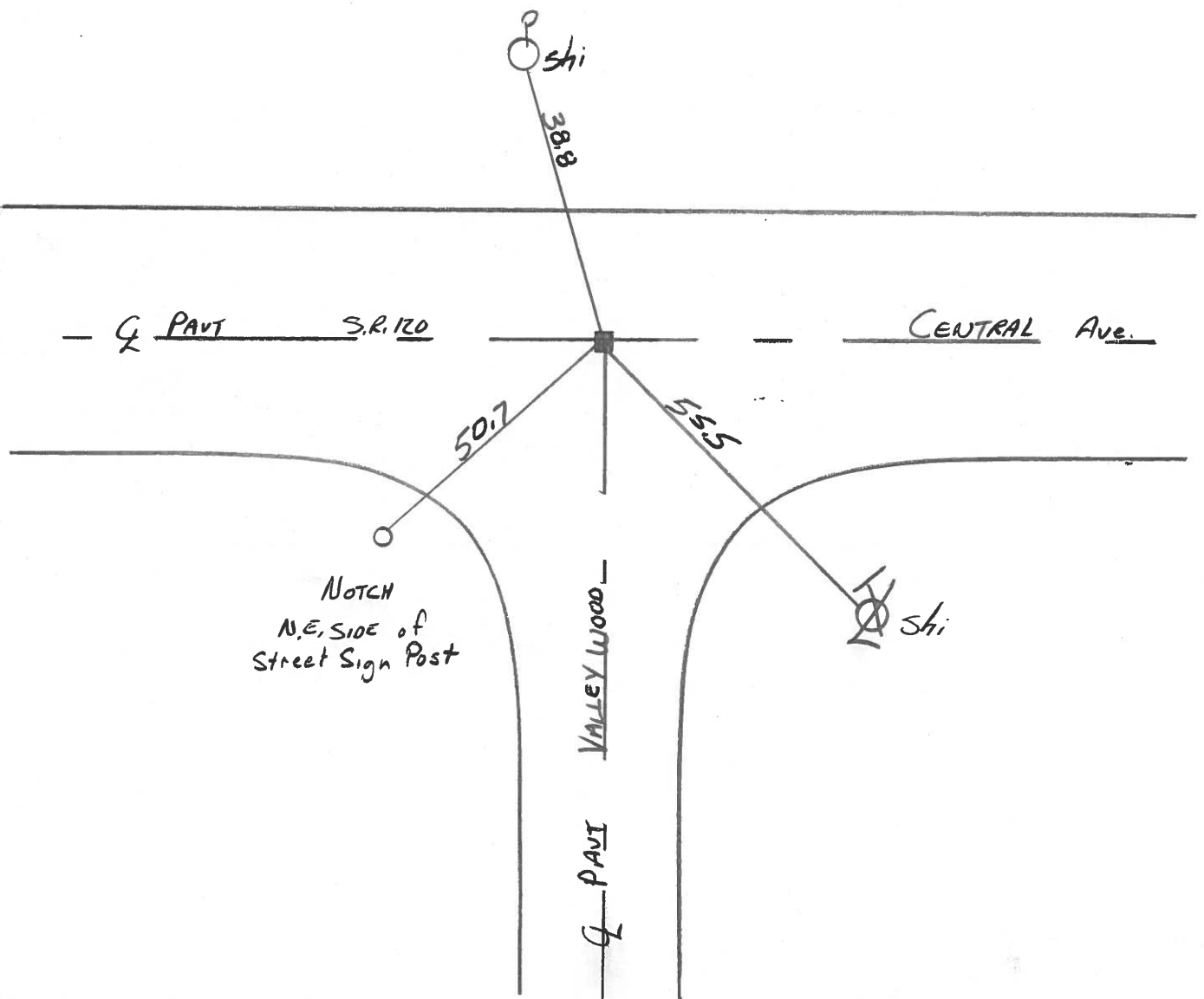
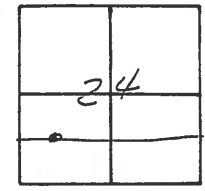
TYPE MONUMENT Man Box

ON SURFACE - BELOW Yes

LEFT - & PAV'T. - RIGHT Yes

27.1 TO L EDGE PAVEMENT

S.L.M. 606+27



PERSONNEL	TITLE	PERSONNEL	TITLE
Tomsic			
Neuser			
Vanyo			
Granata			

COUNTY Lucas DATE Sept. 7, 1972  
 S. R. U.S. 120 WEATHER \_\_\_\_\_  
 SEC. \_\_\_\_\_ TEMP. \_\_\_\_\_

DESCRIPTION Central Ave JOB NO. \_\_\_\_\_  
 LEFT CENTER LINE RIGHT

