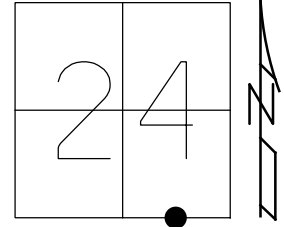


O.D.O.T. DISTRICT 2 SURVEY OFFICE (USE ONLY)

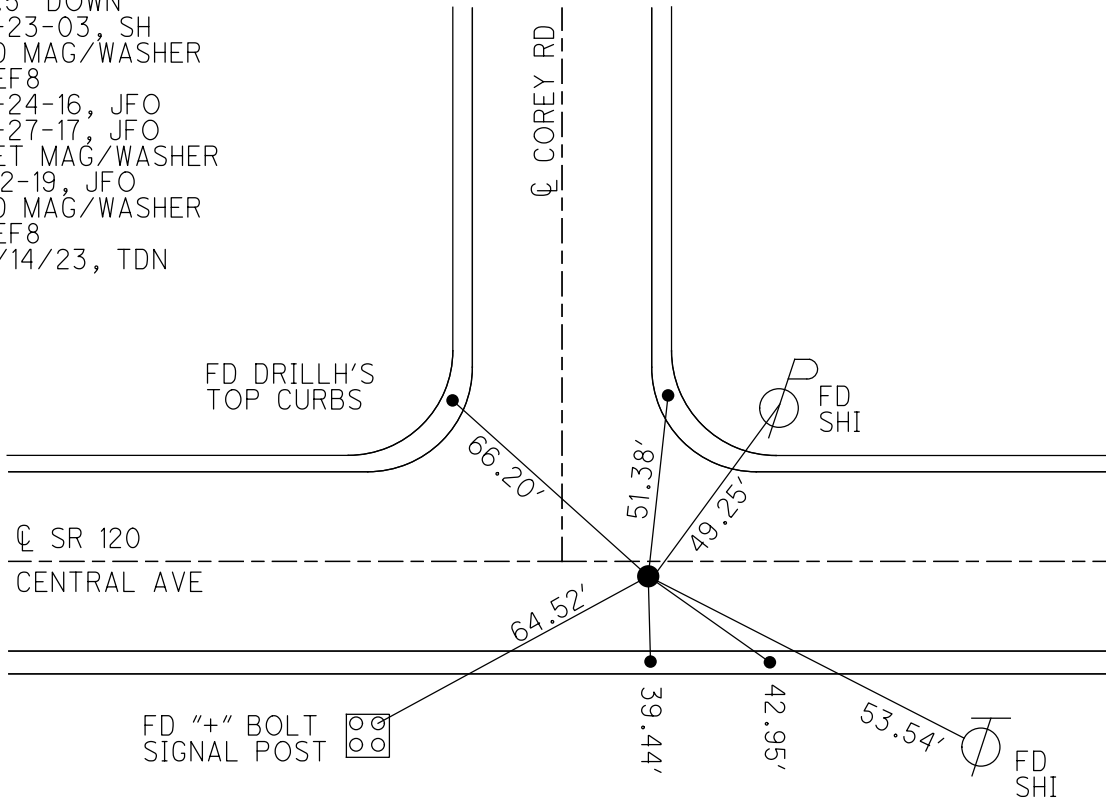
PERSONNEL _____ REFERENCE NO. 8 SHEET 10 OF 13
 NOTES NIESE DATE 4/14/23 ROUTE SR 120
 H.C. NIESE WEATHER SUNNY COUNTY LUCAS
 R.C. AUBLE TEMP. 85° TOWNSHIP SYLVANIA
 DWG BY RHOADES PID 102940 SECTION 24
 T 9 S R 6 E

TYPE MONUMENT MAG/WASHER
 ON SURFACE - ~~BELOW~~ ON
 OFFSET \odot PAVEMENT 0.6' LT : RT
39.2' TO RT EDGE PAVEMENT
 STATION: 615+55.19



HORZ. DATUM: NAD83 2011 GEOID: NAVD88 2018
 GRID: NORTHING: 734533.850 EASTING: 1653315.026

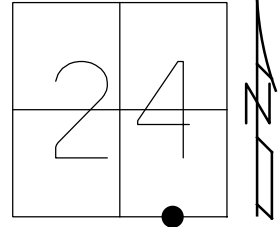
RECORD:
 FD "MOBORA"
 BRASS MON W/"+"
 3.5" DOWN
 5-23-03, SH
 FD MAG/WASHER
 REF8
 6-24-16, JFO
 6-27-17, JFO
 SET MAG/WASHER
 1-2-19, JFO
 FD MAG/WASHER
 REF8
 4/14/23, TDN



O.D.O.T. DISTRICT 2 SURVEY OFFICE (USE ONLY)

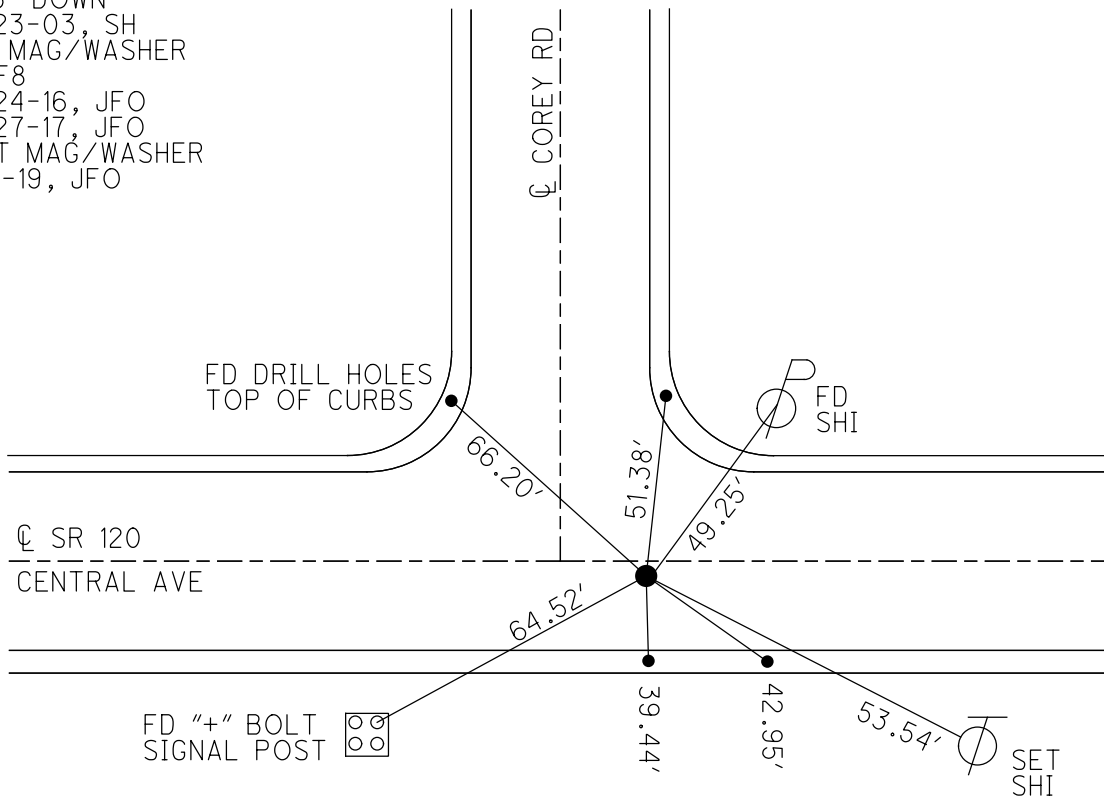
PERSONNEL _____ REFERENCE NO. 8 SHEET 8 OF 11
 NOTES LEU DATE 6-27-17 ROUTE SR 120
 H.C. O'DONNELL WEATHER CLEAR COUNTY LUCAS
 R.C. LEU TEMP. 60° TOWNSHIP SYLVANIA
 RHOADES, CARSON SECTION 24
 DWG BY JAMES PID 95717 T 9 S R 6 E

TYPE MONUMENT MAG/WASHER
 ON SURFACE - ~~BELOW~~ ON
 OFFSET $\text{\textcircled{C}}$ PAVEMENT 0.6' ~~LT~~ : RT
39.2' TO RT EDGE PAVEMENT
 STATION: 615+55.19



HORIZ.DATUM: NAD83 2011 GEOID: NAVD88 2012A
 GRID: NORTHING: 734533.891 EASTING: 1653315.056

RECORD:
 FD "MOBORA"
 BRASS MON W/"+"
 3.5" DOWN
 5-23-03, SH
 FD MAG/WASHER
 REF8
 6-24-16, JFO
 6-27-17, JFO
 SET MAG/WASHER
 1-2-19, JFO



O.D.O.T. DISTRICT 2 SURVEY OFFICE

PERSONNEL

REFERENCE NO. 8

SHEET 8 OF 8

NOTES S HOFFMAN

H.C. A. Brown

R.C. C. Beaumont

M. Glass

DATE 5-23-2003

WEATHER Light Rain

TEMP. 60°

ROUTE SR 120

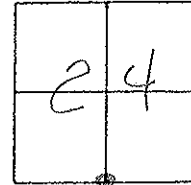
COUNTY Lucas

TOWNSHIP Sylvania

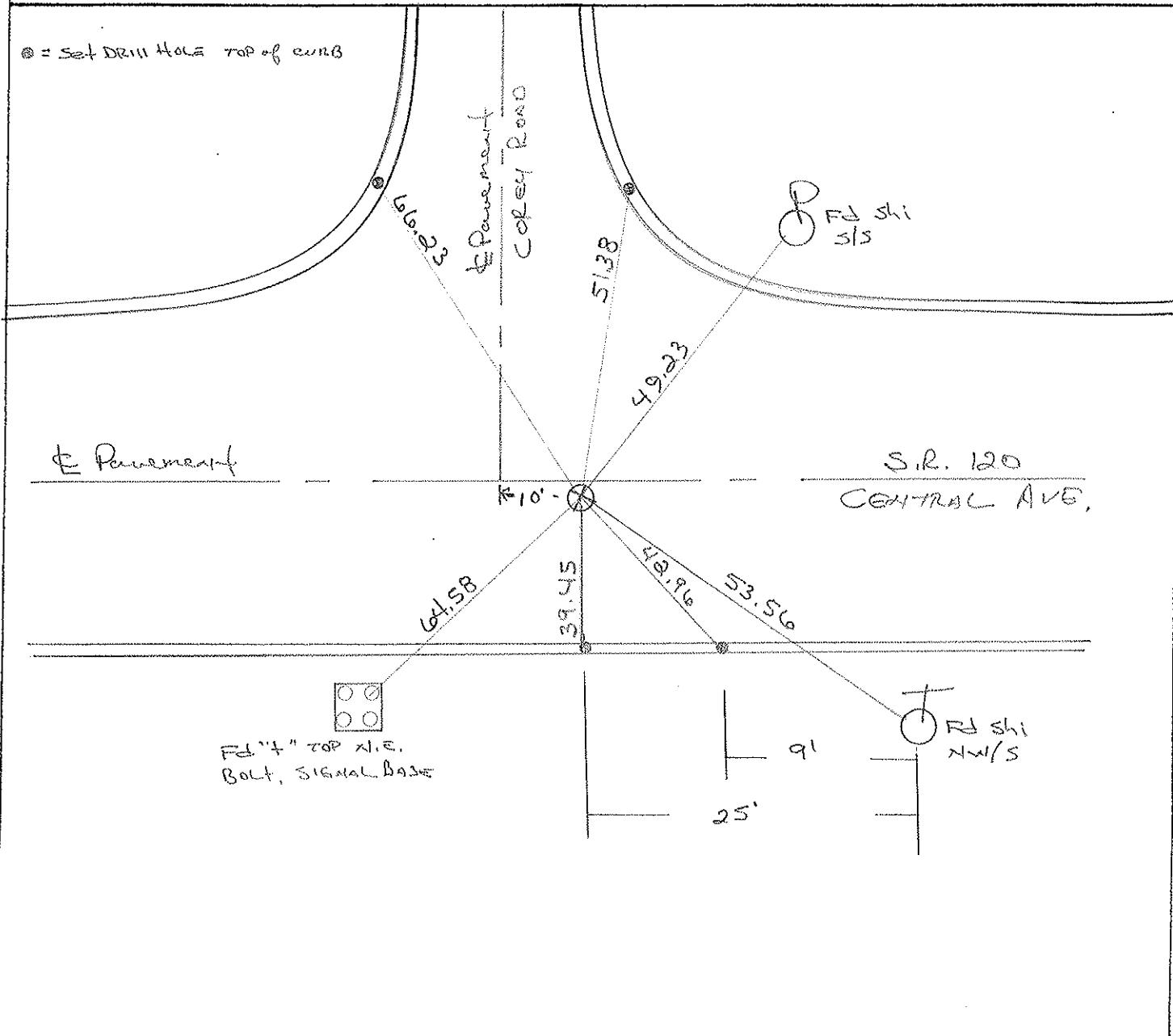
SECTION 24

T 9 S R 6 E

TYPE MONUMENT "MOBORA" BRASS MONUMENT w/ "+"
 ON SURFACE - BELOW 3 1/2"
 LEFT - ☉ PAV'T. - RIGHT 0.6'
39.2 TO RT EDGE PAVEMENT
 S.L.M. G15 + 66



☉ = set DRILL HOLE TOP OF CURB



O.D.O.T. DISTRICT 2 SURVEY OFFICE

PERSONNEL _____

REFERENCE NO. 8

SHEET 8 OF 8

NOTES LOEHRKE

H.C. CORDES

DATE 7-193

ROUTE S.R. 120

R.C. CANTERBURY

WEATHER Cloudy

COUNTY Lucas

ROMETO

TEMP. +80

TOWNSHIP Sylvania

SECTION 24

Reset NAIL 1 1/2"
8-11-93

T 9 S R 6 E

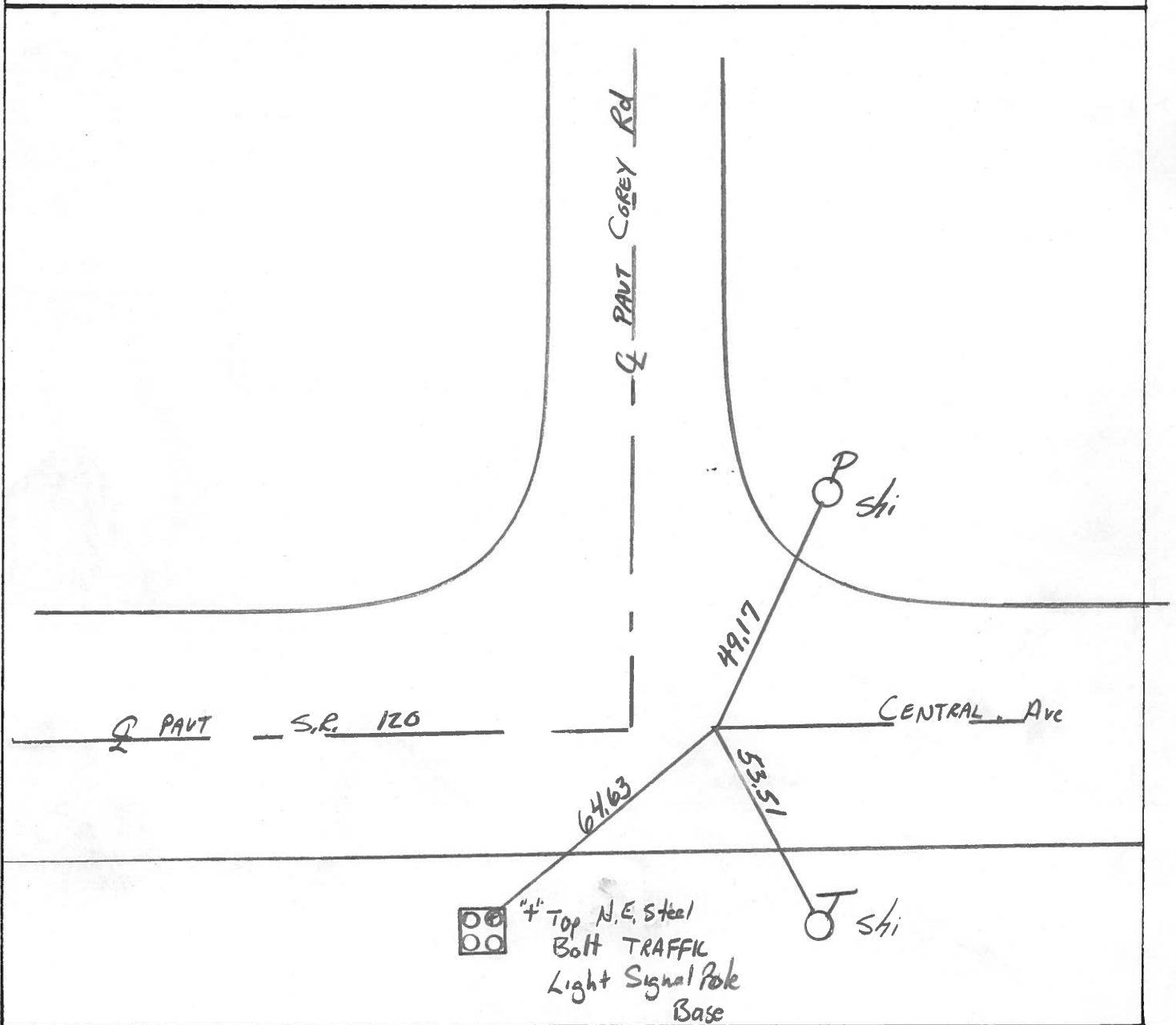
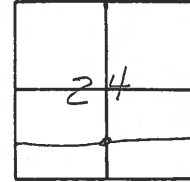
TYPE MONUMENT NAIL 1 1/2"

ON SURFACE - BELOW Yes

LEFT- & PAV'T. - RIGHT 0.6'

39.1 TO _____ EDGE PAVEMENT

S.L.M. 615+66



PERSONNEL	TITLE	PERSONNEL	TITLE
Tomsic			
Neuser			
Vanyo			
Granata			

COUNTY Lucas DATE Sept. 7, 1972
 S. R. U.S. 120 WEATHER _____
 SEC. _____ TEMP. _____

DESCRIPTION Central Ave JOB NO. _____
 LEFT CENTER LINE RIGHT

