

O.D.O.T. DISTRICT 2 SURVEY OFFICE (USE ONLY)

PERSONNEL _____

REFERENCE NO. 9

SHEET 9 OF 11

NOTES CORDER

DATE 7-14-97

ROUTE SR 120

H.C. LOERKHE

WEATHER HOT

COUNTY LUCAS

R.C. COX

TEMP. 92°

TOWNSHIP CITY OF TOLEDO

SECTION 24

DWG BY JAMES PID 95717

T 9 S R 6 E

TYPE MONUMENT MONBOX

ON SURFACE - ~~BELOW~~ ON

OFFSET C PAVEMENT ON

26.7' TO N EDGE PAVEMENT

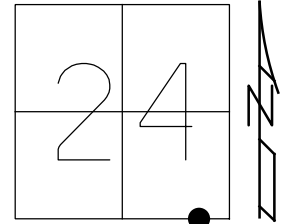
STATION: 620+95

HORZ. DATUM: NAD83 2011

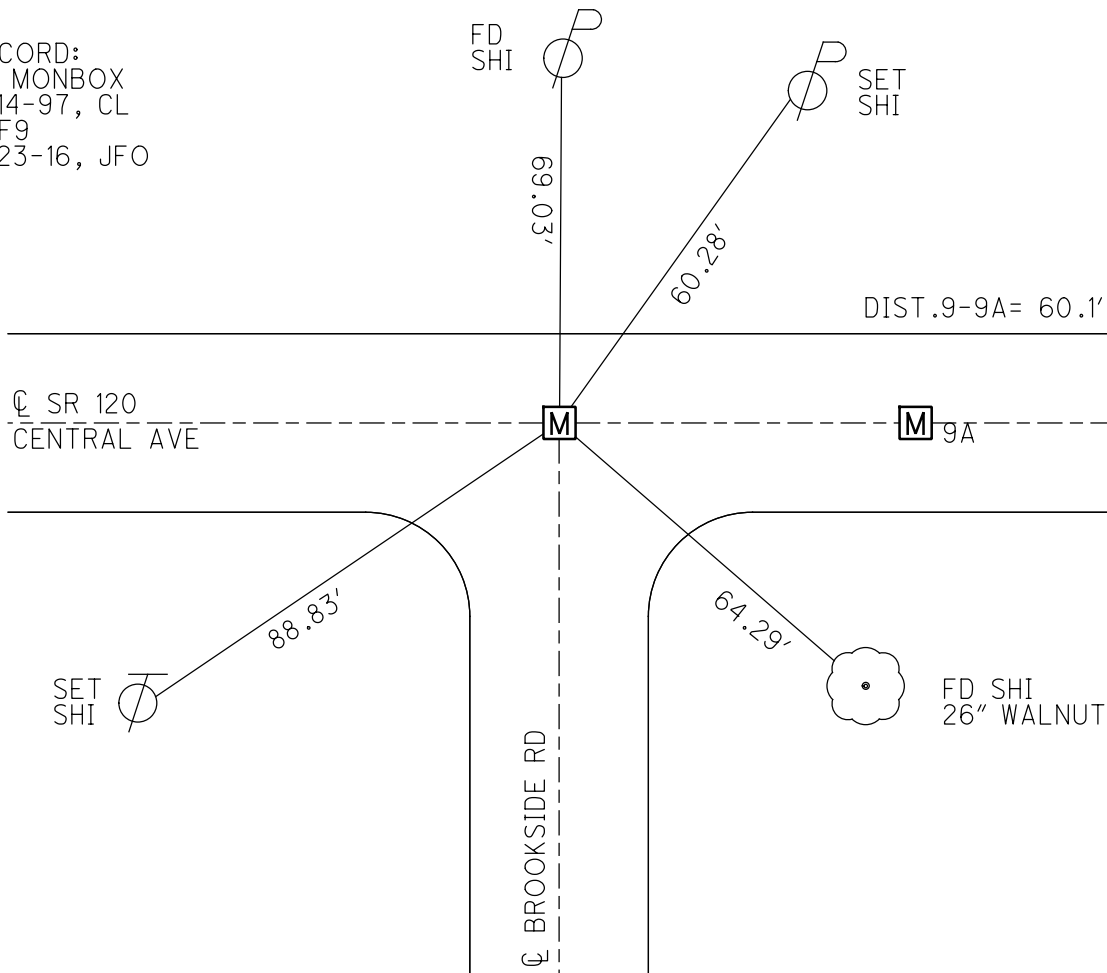
GEOID: NAVD88 2012A

GRID: NORTHING: 734523.895

EASTING: 1653855.646



RECORD:
FD MONBOX
7-14-97, CL
REF9
6-23-16, JFO



O.D.O.T. DISTRICT 2 SURVEY OFFICE

PERSONNEL

REFERENCE NO. 9

SHEET 1 OF 15

NOTES Ben Corder

H.C. C. Loerkhe

R.C. C. Cox

DATE 1/14/97

WEATHER Hot

TEMP. 79.2

ROUTE SR#120

COUNTY LUCAS

TOWNSHIP City of Toledo

SECTION _____

T _____ R _____

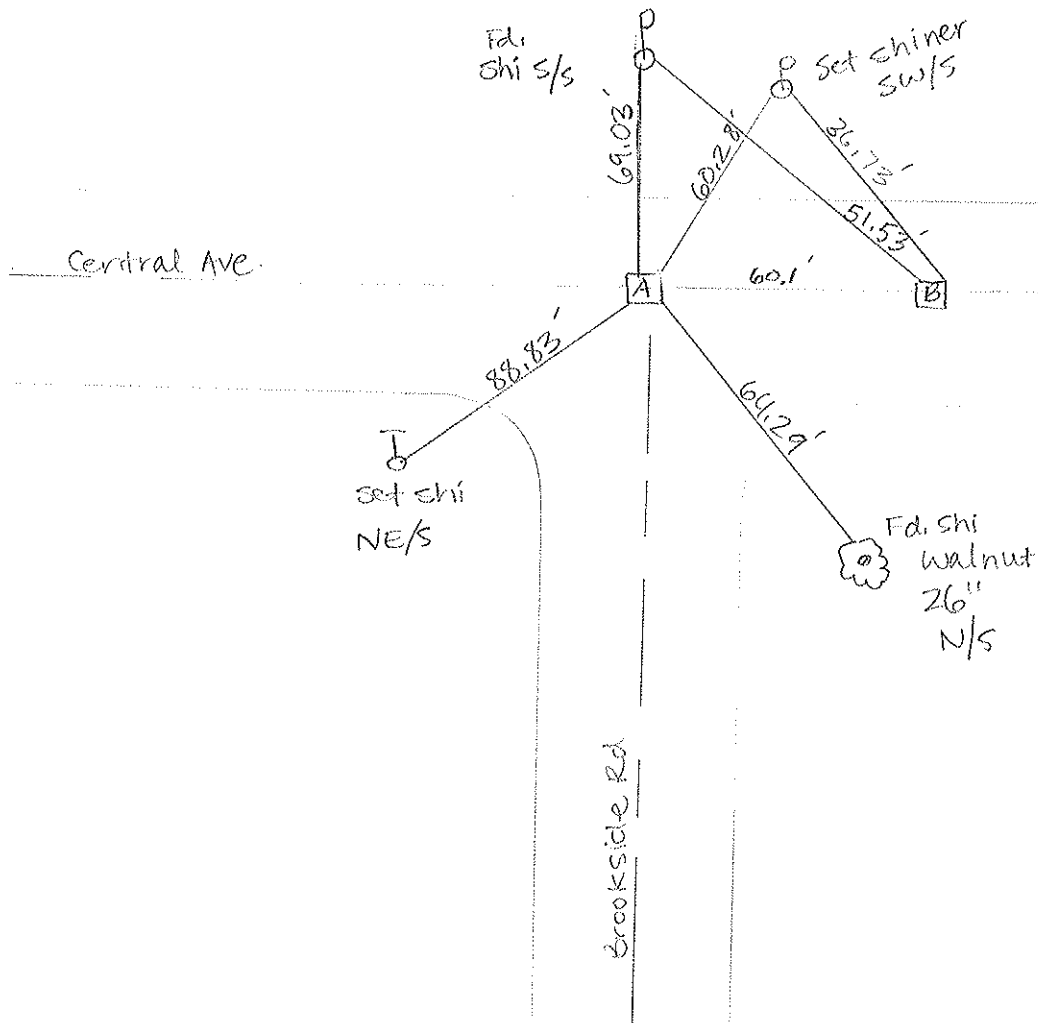
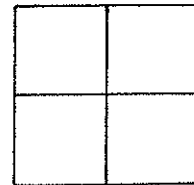
TYPE MONUMENT Mon Box - OPEN LID

ON SURFACE - BELOW Yes

LEFT - CL PAV'T. - RIGHT Yes

26.7' TO N EDGE PAVEMENT

S.L.M. 621+67 (18,948 km)

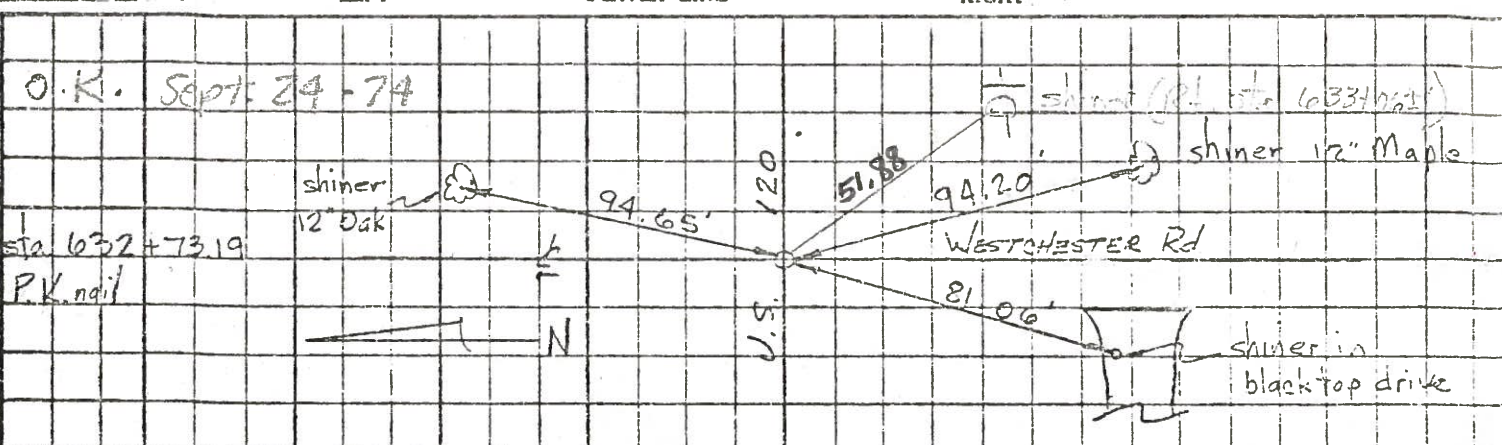


PERSONNEL	TITLE	PERSONNEL	TITLE
Tamsic			
Neuser			
Vanyo			
Granata			

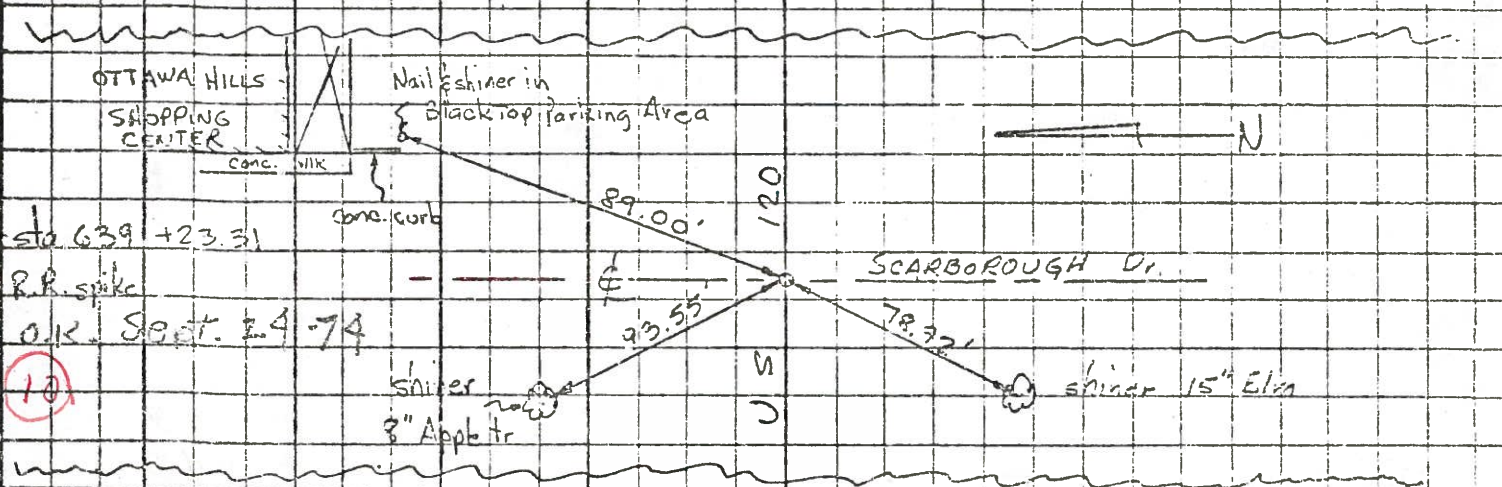
COUNTY Lucas DATE Sept 7, 1972
 S. R. U.S. 120 WEATHER _____
 SEC. _____ TEMP. _____

DESCRIPTION Central ave LEFT CENTER LINE RIGHT JOB NO. _____

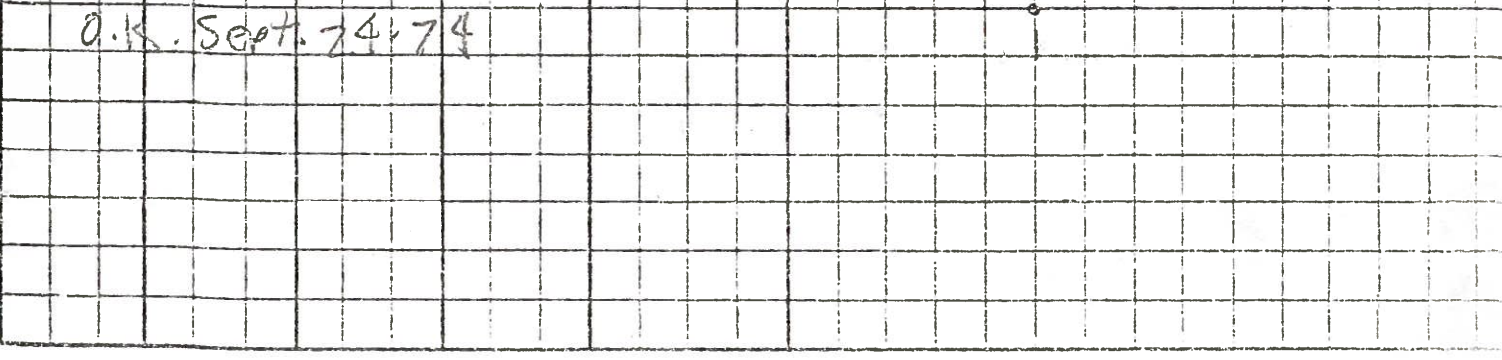
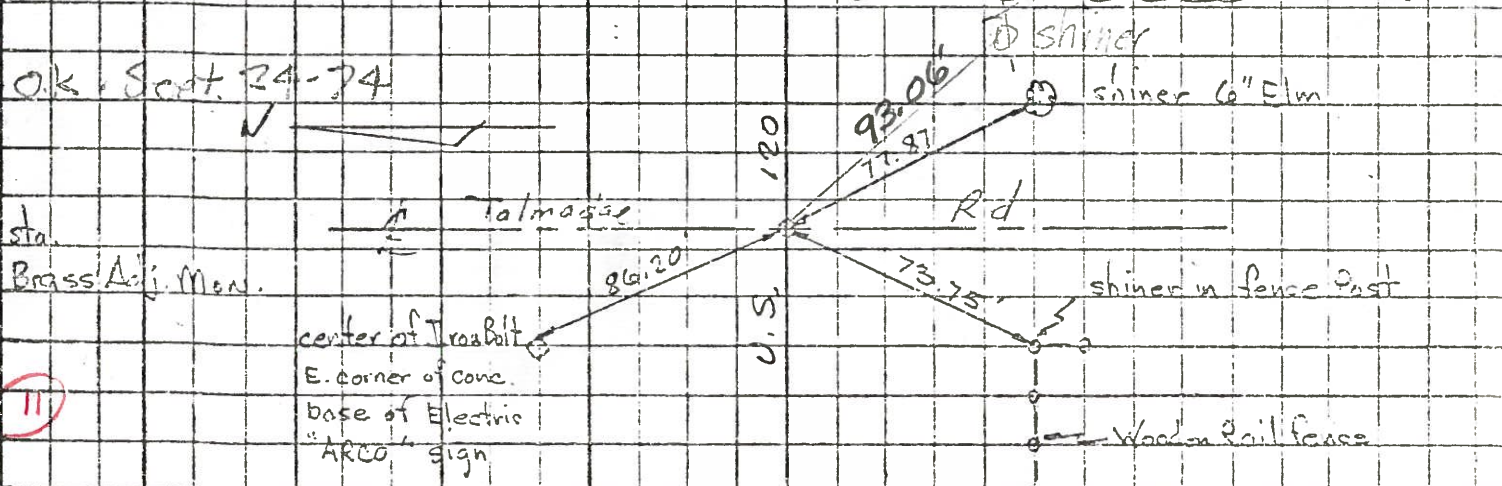
9
*



10
*



11
*



PERSONNEL	TITLE	PERSONNEL	TITLE	COUNTY	DATE
W. DENNO				LUCAS	23 JULY 71
D. CURTIS				S. R. #120	WEATHER FAIR
D. STEVENS				SEC. Central Ave	TEMP 80F
R. BRAHMAN					

DESCRIPTION	REFERENCES TO CONTROL POINTS	JOB NO.
	LEFT CENTER LINE RIGHT	

