

O.D.O.T. DISTRICT 2 SURVEY OFFICE (USE ONLY)

PERSONNEL

REFERENCE NO. 10

SHEET 11 OF 11

NOTES CORDES

DATE 7-14-97

ROUTE SR 120

H.C. LOERKHE

WEATHER HOT

COUNTY LUCAS

R.C. COX

TEMP. 92°

TOWNSHIP CITY OF TOLEDO

DWG BY JAMES

PID 95717

SECTION 24

T 9 S R 6 E

TYPE MONUMENT MONBOX

ON SURFACE - ~~BELOW~~ ON

OFFSET  $\bar{C}$  PAVEMENT ON LT : RT

26.7' TO LT EDGE PAVEMENT

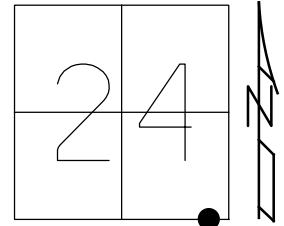
STATION: 623+15

HORZ.DATUM: NAD83 2011

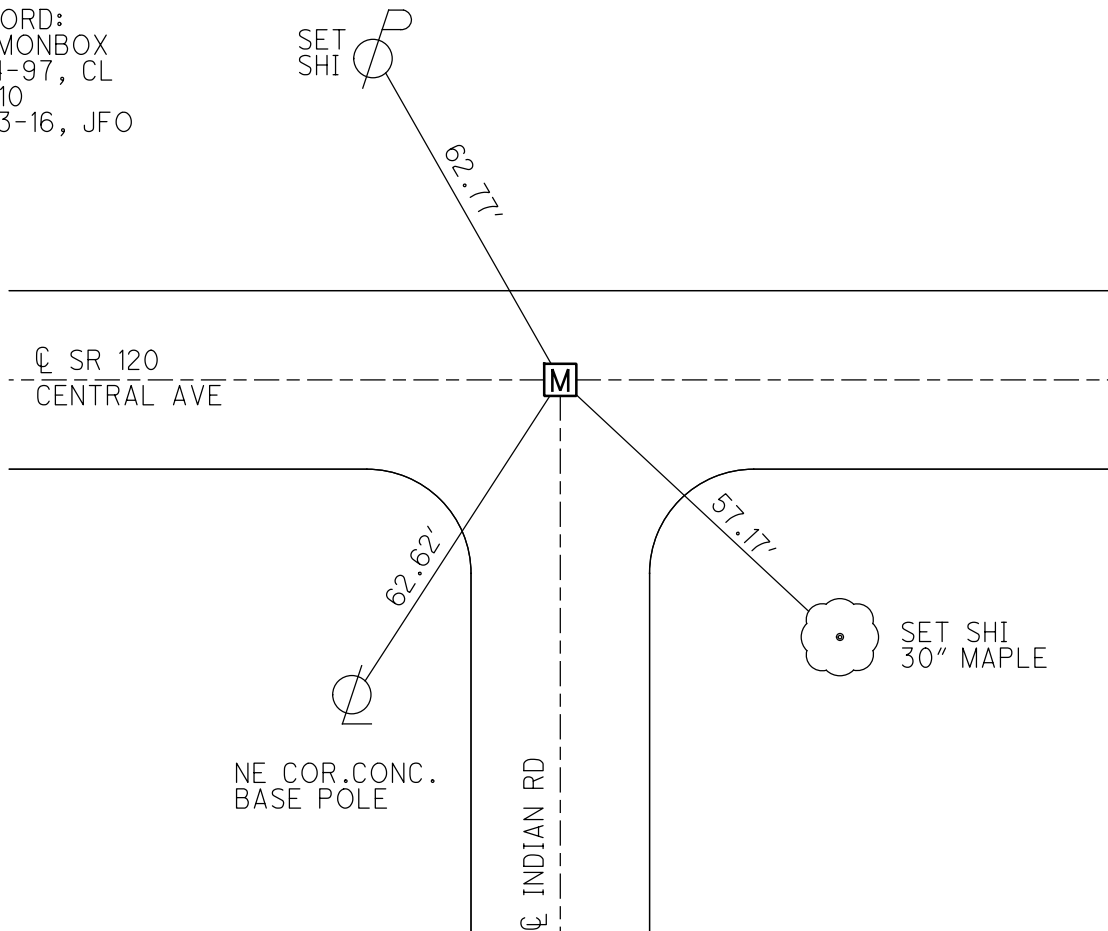
GEOID: NAVD88 2012A

GRID: NORTHING: 734519.615

EASTING: 1654075.331



RECORD:  
FD MONBOX  
7-14-97, CL  
REF10  
6-23-16, JFO



# O.D.O.T. DISTRICT 2 SURVEY OFFICE

PERSONNEL

REFERENCE NO. 10

SHEET 2 OF 15

NOTES B. Cordes

H.C. C. Loerkhe

R.C. C. Coy

DATE 7-14-97

WEATHER Flat

TEMP. +92

ROUTE SR #120

COUNTY LUCKS

TOWNSHIP city of Toledo

SECTION \_\_\_\_\_

T \_\_\_\_\_ R \_\_\_\_\_

TYPE MONUMENT Mount. Box

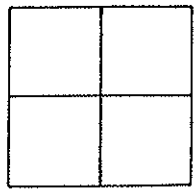
ON SURFACE - BELOW yes

LEFT & PAV'T. - RIGHT both

26.7 TO L EDGE PAVEMENT

S.L.M. 184997

SLM - 11.80



Central Ave.

62.77

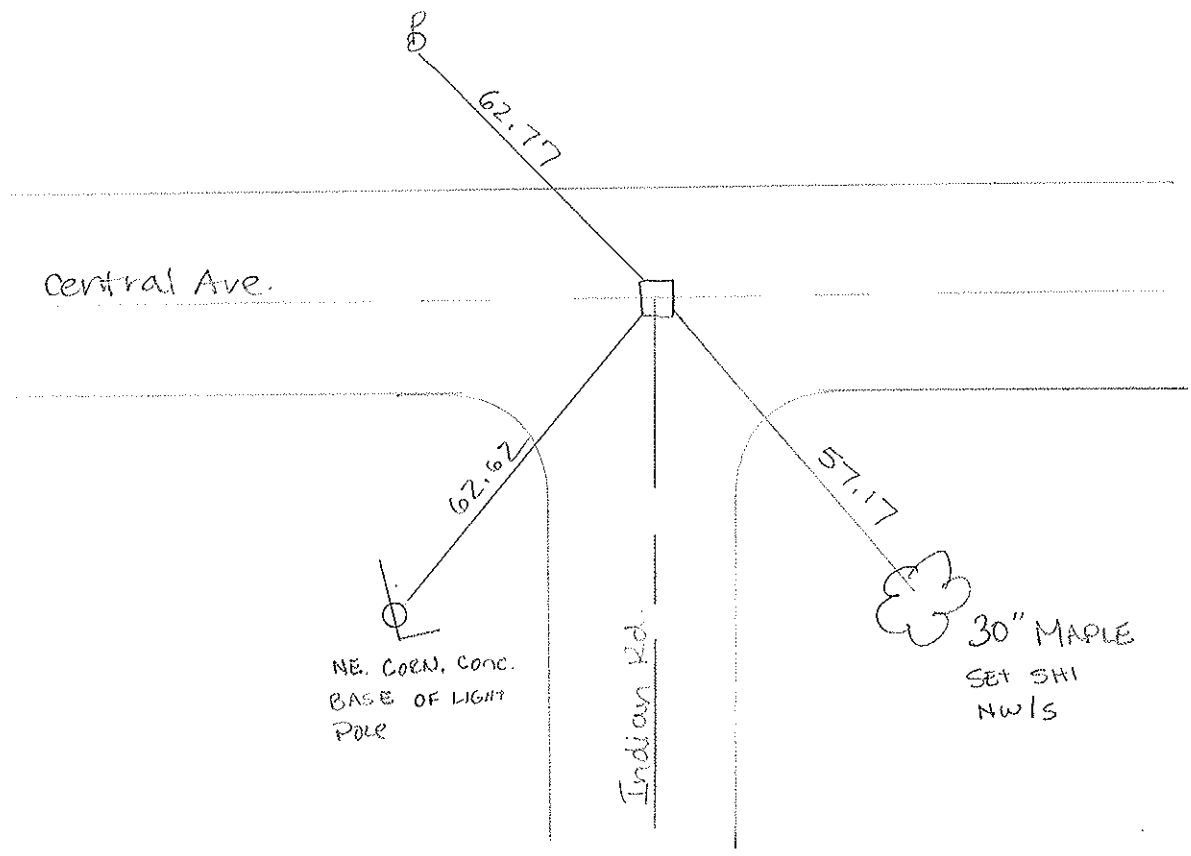
62.62

57.17

NE. CORN. CONC.  
BASE OF LIGHT  
POLE

Indian Rd.

30" MAPLE  
SET SHI  
NW1S





PERSONNEL	TITLE	PERSONNEL	TITLE
W. DENNO			
D. CURTIS			
D. STEVENS			
R. BRAHMAN			

COUNTY LUCAS DATE 23 JULY 71

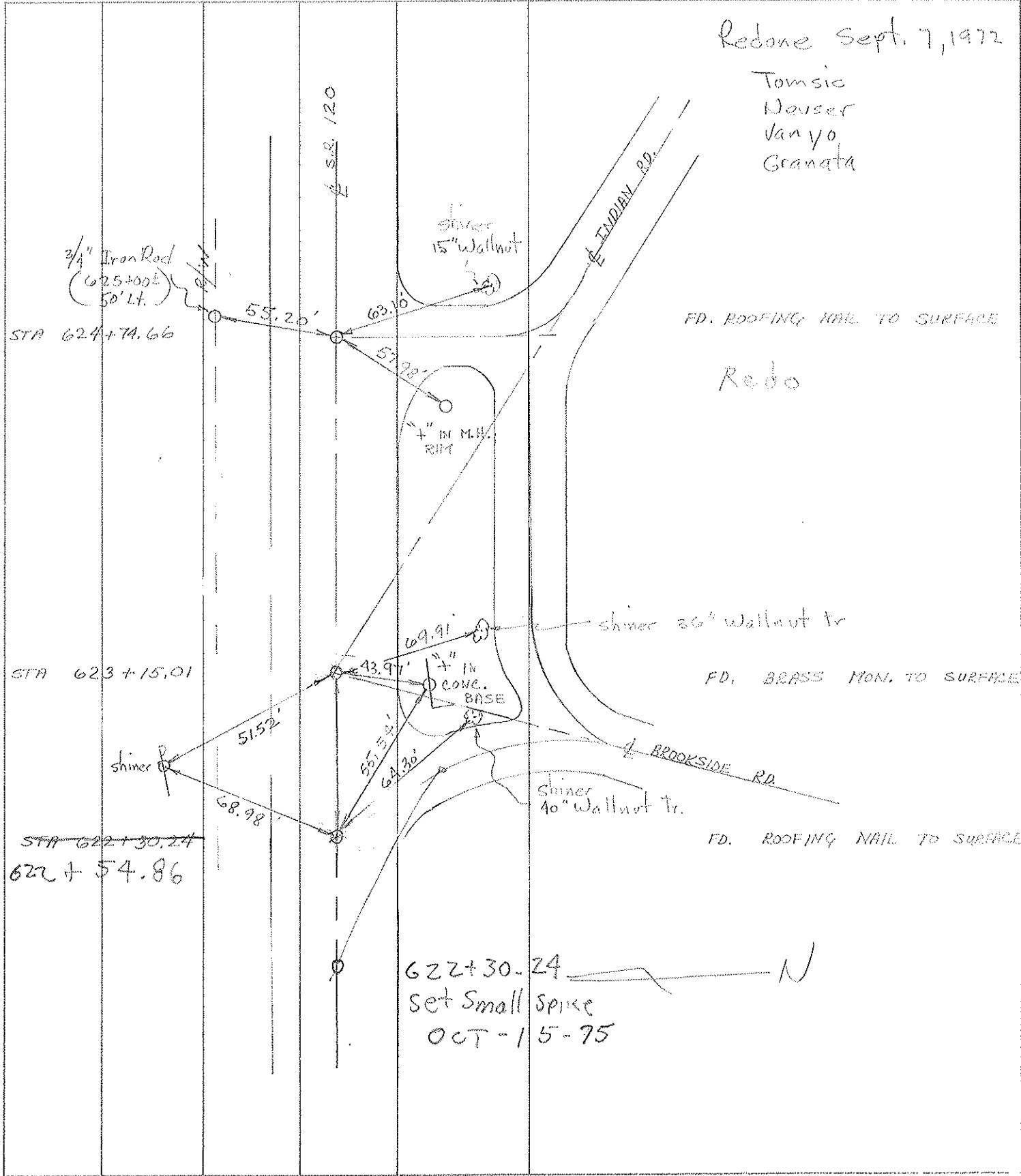
S. R. #120 WEATHER FAIR

SEC. Central Ave TEMP 80F

DESCRIPTION	REFERENCES TO CONTROL POINTS			JOB NO.
	LEFT	CENTER LINE	RIGHT	

Redone Sept. 7, 1972

Tomsic  
Neuser  
Jan yo  
Granata



FD. ROOFING NAIL TO SURFACE

Rebo

FD. BRASS MON. TO SURFACE

FD. ROOFING NAIL TO SURFACE

622+30.24 ——— N  
Set Small spike  
OCT-15-75

PERSONNEL TITLE PERSONNEL TITLE

COUNTY Lucas

DATE 6-3-53

S. R. U.S. #20

WEATHER

SEC.

TEMP.

DESCRIPTION

LEFT

CENTER LINE

RIGHT

JOB NO.

Int. Indian Rd.  
Brass Mon. (Adj)

#70

S.W. to witness mon. 46.42

N.E. to witness mon. 48.80

N.W. to shiner in P.P. 58.54

N.W. to witness mon. 47.18

Int. Talmadge Rd.  
Brass Mon. (Adj)

#71

S.W. to shiner in T.P. e. 51.43

S.W. to witness mon. 49.35

N.E. to witness mon. 49.68

N.W. to shiner in P.P. 58.54

S.E. to N.W. cor. brick pillar post. 72.66

1/4 cor. sec. 19 - E-7-E.  
Brass Mon (Adj) sta 565 + 02.60

#72

N.W. to shiner in 30' Elm 48.90

N.E. to shiner in 15' maple 46.72

S.S.W. to lower rim Hyd 38.97

Int. Secor Rd.  
Brass Mon. (Adj)

#73

N.W. to + in Rad. curb 42.20

N.E. to + in rad. curb 41.29

S.E. to steel/sh. sign post set in

conc. 45.02

N.E. to near cor. of Conc. base light T.P. 42.70

N.W. to steel sign post 39.70

S.E. to sign post 40.20

1/4 cor. sec. 20 - 18-7-E.

#74

N. to shiner in 30' oak 32.00

N.W. to shiner in 12' Elm 35.01

S.W. to shiner in 12' maple 72.35

S. to shiner in 15' triple Elm 38.29