

O.D.O.T. DISTRICT 2 SURVEY OFFICE (USE ONLY)

PERSONNEL _____

REFERENCE NO. 13

SHEET 3 OF 37

NOTES LOEHRKE

DATE 7/14/97

ROUTE US 120

H.C. LOEHRKE

WEATHER HOT

COUNTY LUCAS

R.C. CORDES

TEMP. 100°

TOWNSHIP CITY OF TOLEDO

DWG BY NIESE

PID _____

SECTION 25

T 9 S R 6 E

TYPE MONUMENT BRASS PLUG W/ CROSS

~~ON SURFACE~~ - BELOW 3"

OFFSET \odot PAVEMENT ON LT : RT

- TO - EDGE PAVEMENT

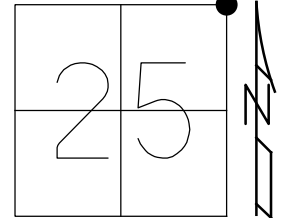
STATION: 642+34

HORZ. DATUM: _____

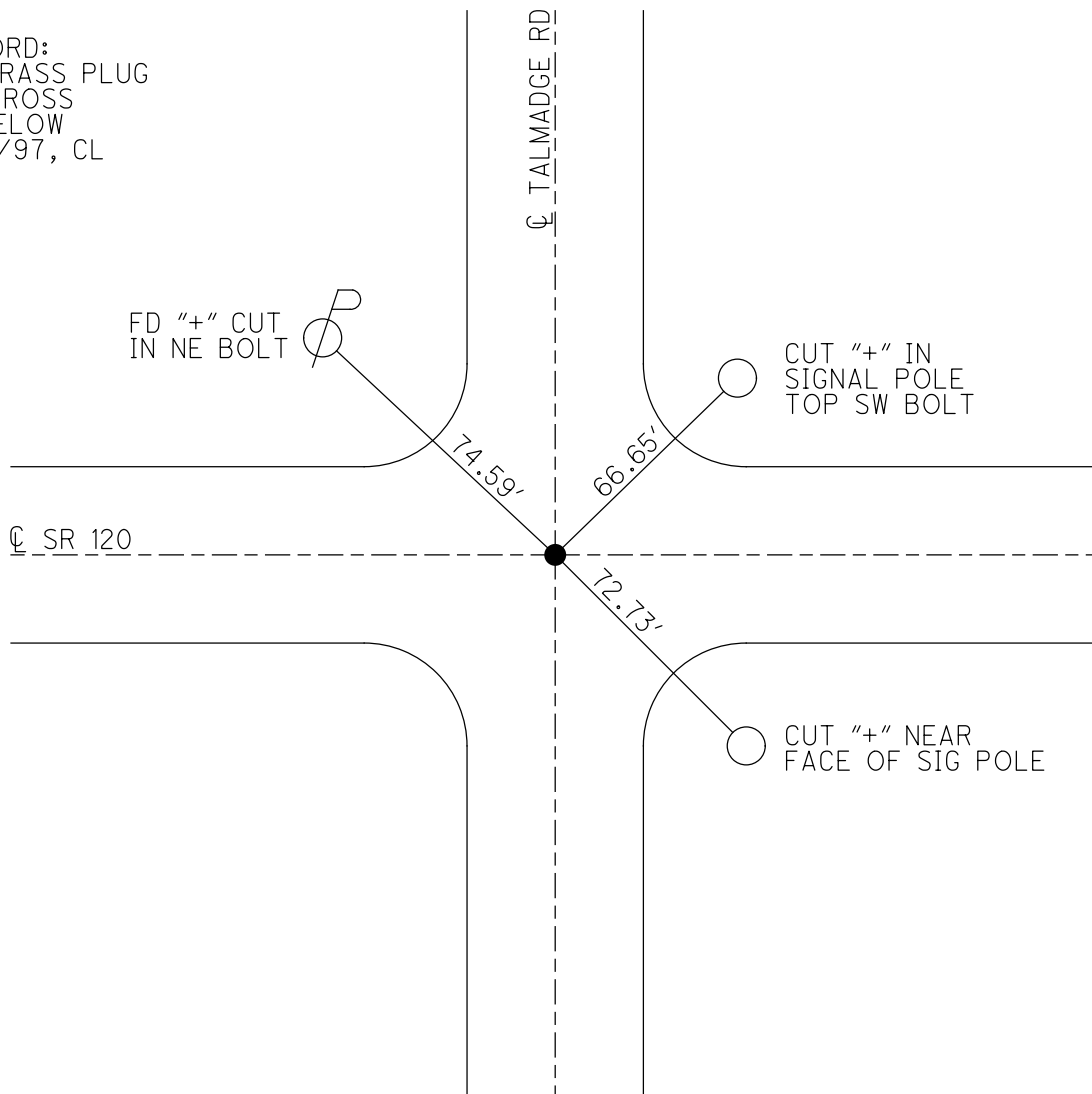
GEOID: _____

GRID: NORTHING: _____

EASTING: _____



RECORD:
FD BRASS PLUG
W/ CROSS
3" BELOW
7/14/97, CL



O.D.O.T. DISTRICT 2 SURVEY OFFICE

PERSONNEL

REFERENCE NO. 13

SHEET 5 OF 15

NOTES LOEHRKE

H.C. LOEHRKE

R.C. CORDES

DATE 7-14-97

WEATHER Too Hot!

TEMP. +100

ROUTE U.S. 120

COUNTY Lucas

TOWNSHIP City of Toledo

SECTION _____

T _____ R _____

Set P.K./WASHER
1229-97
C.L.

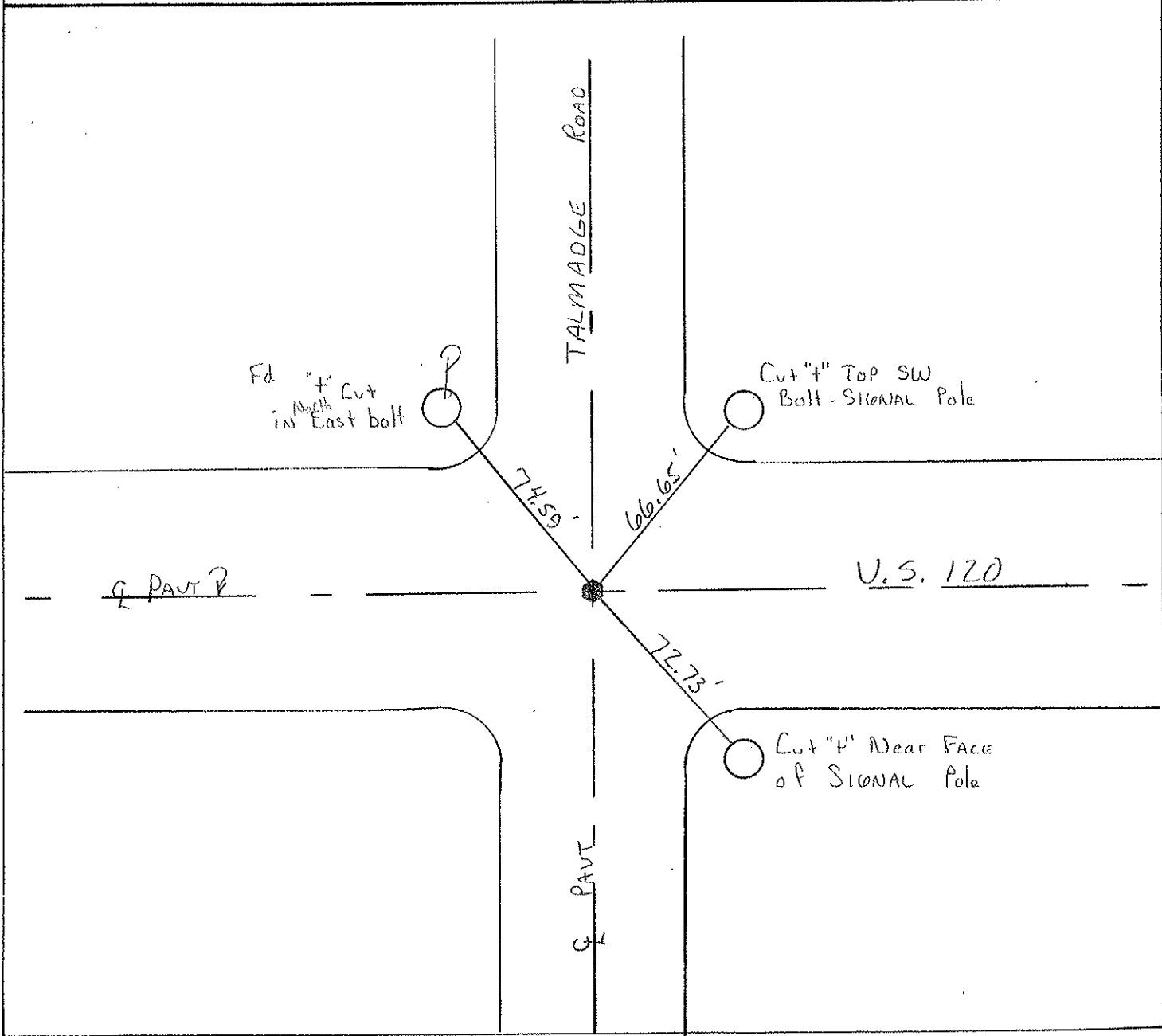
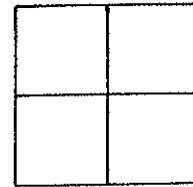
TYPE MONUMENT BRASS PLUG w/ CROSS

~~ON~~ SURFACE - BELOW 3"

LEFT - & PAV'T. - RIGHT Yes

TO _____ EDGE PAVEMENT

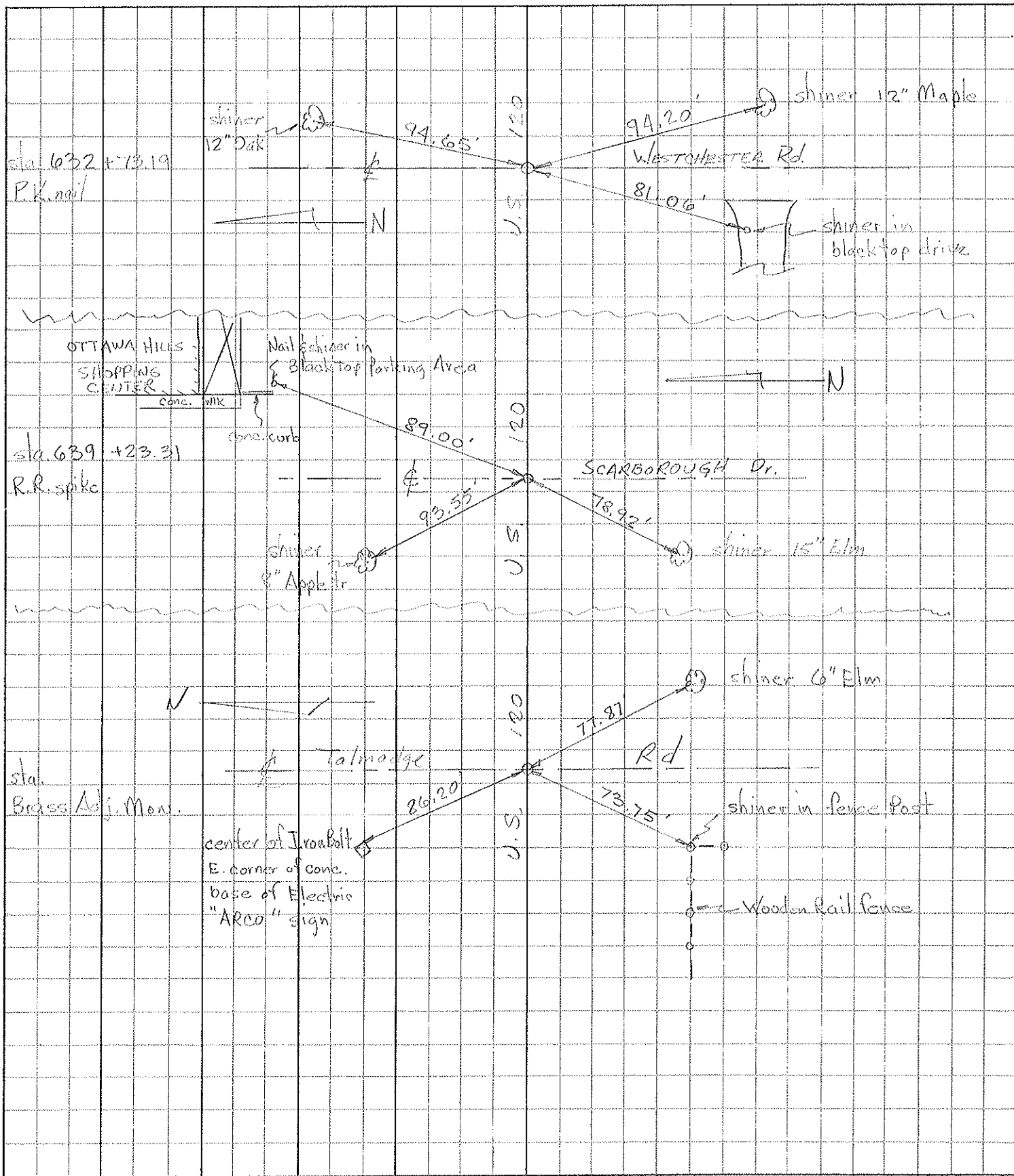
S.L.M. 642+34 (19.578km)



PERSONNEL	TITLE	PERSONNEL	TITLE
Tomsic			
Neuser			
Vanyo			
Granata			

COUNTY Lucas DATE Sept. 7, 1972
 S. R. U.S. 120 WEATHER _____
 SEC. _____ TEMP. _____

DESCRIPTION Central ave LEFT CENTER LINE RIGHT JOB NO. _____



PERSONNEL TITLE PERSONNEL TITLE

COUNTY Lucas

DATE 6-3-53

S. R. U.S. # 20

WEATHER

SEC.

TEMP.

DESCRIPTION

LEFT

CENTER LINE

RIGHT

JOB NO.

Int. Indian Rd.
Brass Mon. (Adj)

#70

S.W. to witness mon.

46.42

N.E. to witness mon.

48.80

N.W. to shiner in P.P.

58.54

N.W. to witness mon.

47.18

Int. To Imadge Rd.
Brass Mon. (Adj)

#71

S.W. To shiner in T. P. e.

51.43

S.W. to witness mon.

49.35

N.E. to witness mon.

49.68

N.W. to shiner in P.P.

58.54

S.E. to N.W. cor. brick pillar post.

72.66

1/4 cor. sec. 19 - E-7-E.
Brass Mon (Adj) sta 565 + 02.60

#72

N.W. to shiner in 30' Elm

48.90

N.E. to shiner in 15' maple

46.72

S.S.W. to lower rim Hyd

38.97

Int. Secor Rd.
Brass Mon. (Adj)

#73

N.W. to t-in Rad. curb

42.20

N.E. to t-in rad. curb

41.29

S.E. to steel/sh. sign post set in

conc. 45.02

N.E. to near cor. of Conc. base light T.P.

42.70

N.W. to steel sign post

39.70

S.E. to sign post

40.20

1/4 cor. sec. 20 - 18-7-E.

#74

N. to shiner in 30' oak

32.00

N.W. to shiner in 12' Elm

35.01

S.W. to shiner in 12' maple

72.35

S. to shiner in 15' triple Elm

38.29