

O.D.O.T. DISTRICT 2 SURVEY OFFICE (USE ONLY)

PERSONNEL

REFERENCE NO. 15

SHEET 5 OF 37

NOTES LOEHRKE
 H.C. LOEHRKE
 R.C. HUSS

DATE 7/15/97
 WEATHER NICE
 TEMP. 82°

ROUTE US 120
 COUNTY LUCAS
 TOWNSHIP CITY OF TOLEDO
 SECTION 30

DWG BY NIESE PID _____

T 9 S R 7 E

TYPE MONUMENT MONBOX

ON SURFACE - ~~BELOW~~ ON

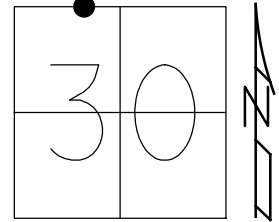
OFFSET ☉ PAVEMENT ON LT : RT

27.3' TO LT EDGE PAVEMENT

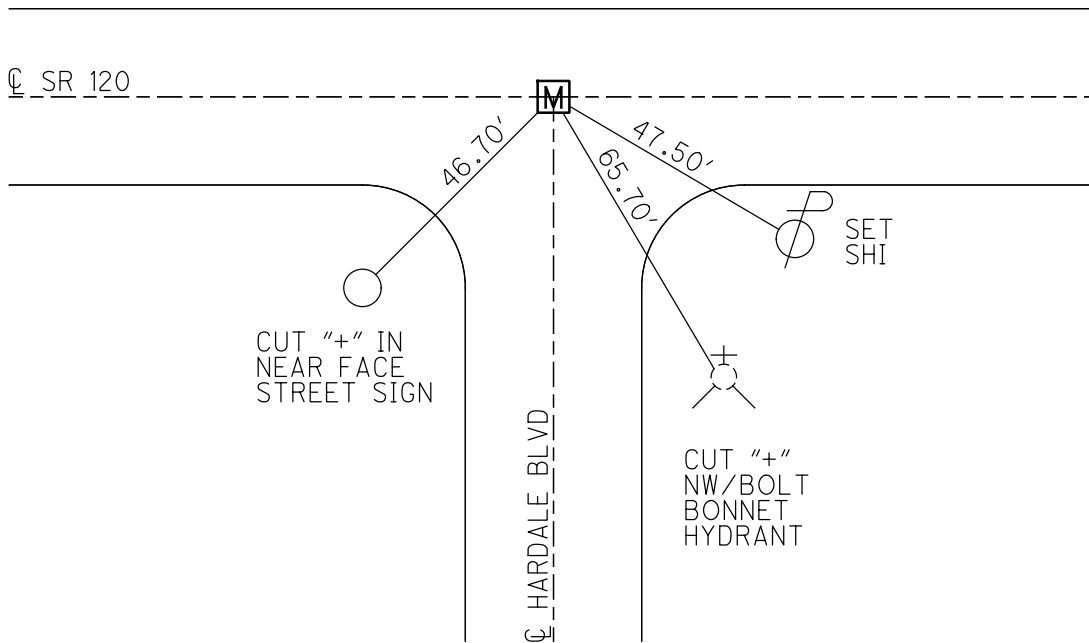
STATION: 660+32

HORZ. DATUM: _____ GEOID: _____

GRID: NORTHING: _____ EASTING: _____



RECORD:
 FD MONBOX
 7/15/97, CL



O.D.O.T. DISTRICT 2 SURVEY OFFICE

PERSONNEL _____

REFERENCE NO. 15

SHEET 7 OF 15

NOTES LOEHRKE

H.C. LOEHRKE

R.C. Huss

DATE 7-15-97

WEATHER Nice

TEMP. +82

ROUTE U.S. 120

COUNTY LUCAS

TOWNSHIP City of Toledo

SECTION _____

T. _____ R. _____

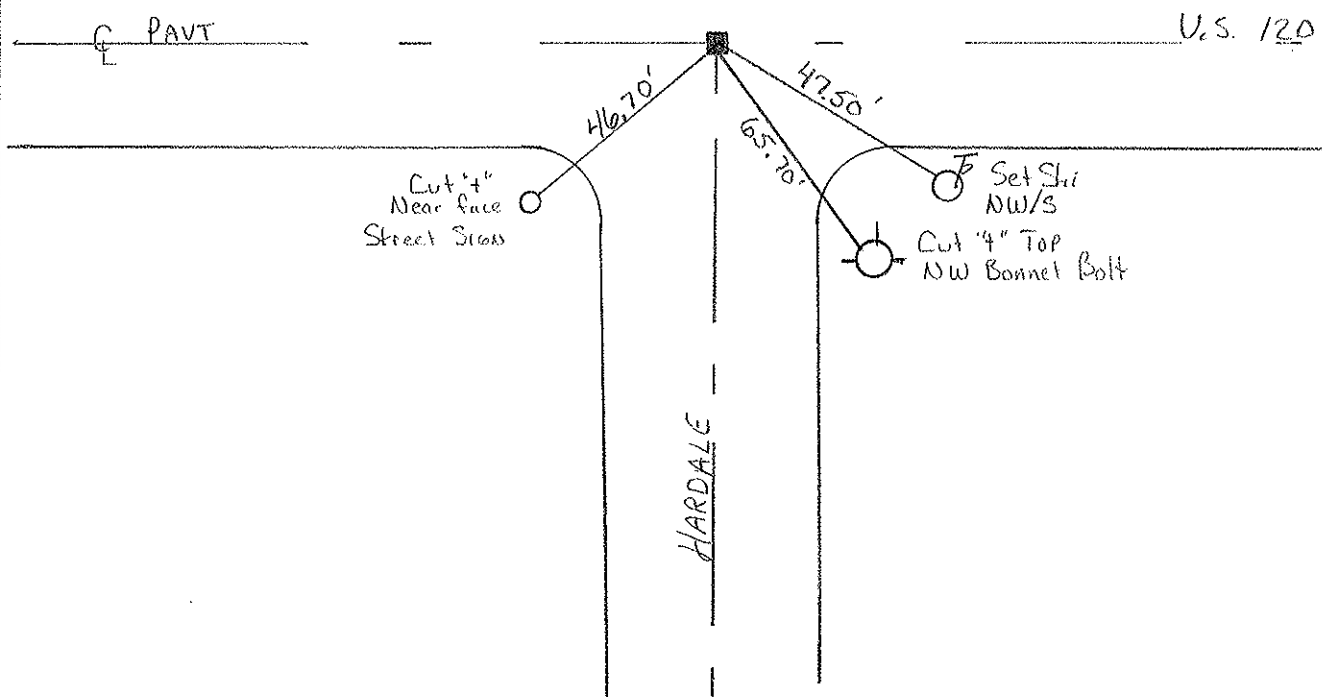
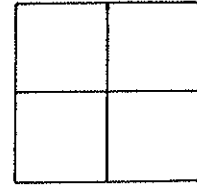
TYPE MONUMENT Mon Box - UNOPEN

ON SURFACE - BELOW Yes

LEFT - < PAV'T. - RIGHT Yes

27.3' TO NORTH EDGE PAVEMENT

S.L.M. 660+32 (20+021)



PERSONNEL	TITLE	PERSONNEL	TITLE
Tomsic			
Neuser			
Janyo			
Granata			

COUNTY Lucas DATE Sept. 11, 1972
 S. R. U. S. 120 WEATHER _____
 SEC. Central Ave. TEMP. _____

DESCRIPTION Central ave LEFT CENTER LINE RIGHT JOB NO. _____

