

O.D.O.T. DISTRICT 2 SURVEY OFFICE (USE ONLY)

PERSONNEL _____

REFERENCE NO. 16

SHEET 6 OF 37

NOTES LOEHRKE

DATE 7/15/97

ROUTE US 120

H.C. LOEHRKE

WEATHER NICE

COUNTY LUCAS

R.C. HUSS

TEMP. 82°

TOWNSHIP CITY OF TOLEDO

DWG BY NIESE

PID _____

SECTION 30

T 9 S R 7 E

TYPE MONUMENT MONBOX

ON SURFACE - ~~BELOW~~ ON

OFFSET ☉ PAVEMENT ON LT : RT

- TO - EDGE PAVEMENT

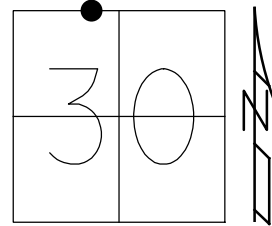
STATION: 662+59

HORIZ. DATUM: _____

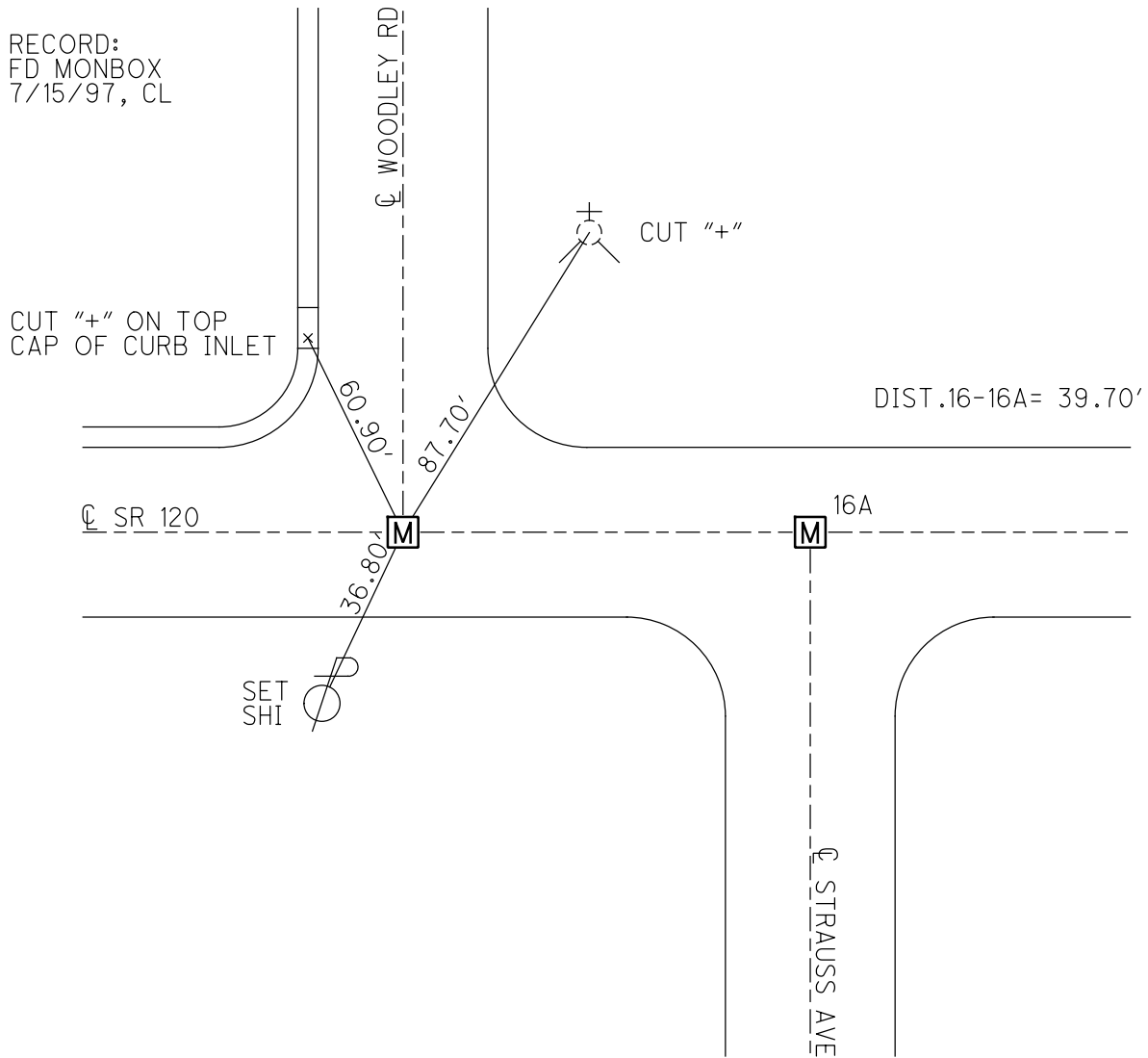
GEOID: _____

GRID: NORTHING: _____

EASTING: _____



RECORD:
FD MONBOX
7/15/97, CL



O.D.O.T. DISTRICT 2 SURVEY OFFICE

PERSONNEL _____

REFERENCE NO. 16

SHEET 8 OF 15

NOTES LOEHRKE

H.C. LOEHRKE

R.C. Huss

DATE 7-15-97

WEATHER Nice

TEMP. +82

ROUTE U.S. 120

COUNTY LUCAS

TOWNSHIP City of Toledo

SECTION _____

T _____ R _____

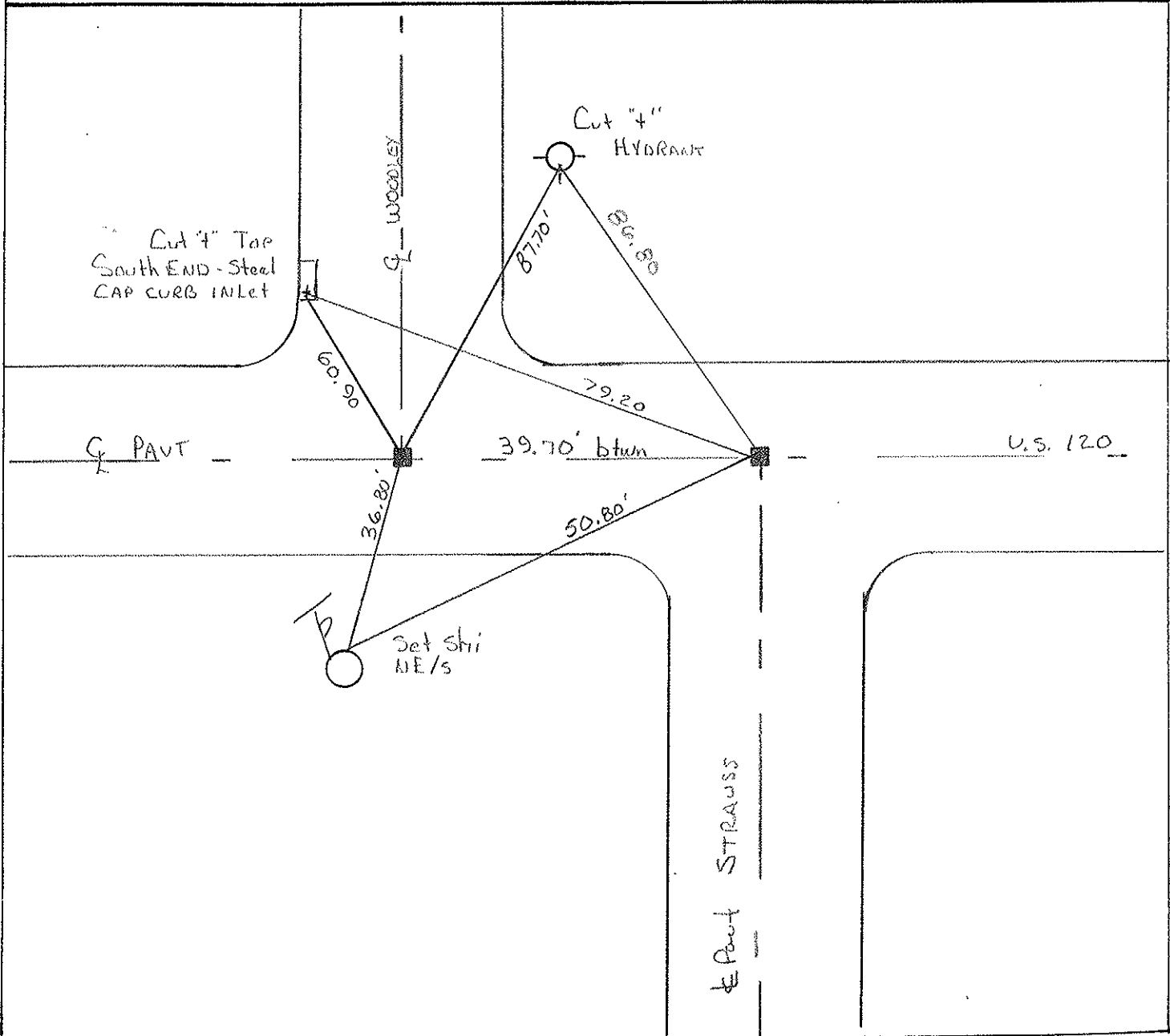
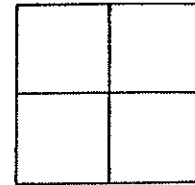
TYPE MONUMENT Mon Boxes

ON SURFACE - BELOW Yes

LEFT - & PAV'T. - RIGHT Yes

TO _____ EDGE PAVEMENT

S.L.M. 20 + 196 & 20 + 208



PERSONNEL	TITLE	PERSONNEL	TITLE
Tomsic			
Neuser			
Vanyo			
Granata			

COUNTY Lucas DATE Sept. 11, 1972

S. R. U. S. 120 WEATHER _____

SEC. Central Ave. TEMP. _____

DESCRIPTION Central ave LEFT CENTER LINE RIGHT JOB NO. _____

