

O.D.O.T. DISTRICT 2 SURVEY OFFICE (USE ONLY)

PERSONNEL

REFERENCE NO. 18

SHEET 9 OF 37

NOTES LOEHRKE

DATE 7/15/97

ROUTE US 120

H.C. LOEHRKE

WEATHER FAIR

COUNTY LUCAS

R.C. HUSS

TEMP. 82°

TOWNSHIP CITY OF TOLEDO

COX

SECTION 30

DWG BY NIESE

PID _____

T 9 S R 7 E

TYPE MONUMENT MONBOX

ON SURFACE - ~~BELOW~~ ON

OFFSET \odot PAVEMENT ON LT : RT

- TO - EDGE PAVEMENT

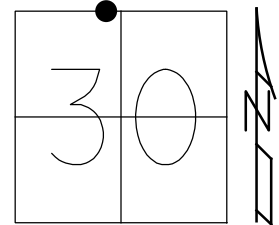
STATION: 669+42

HORZ. DATUM: _____

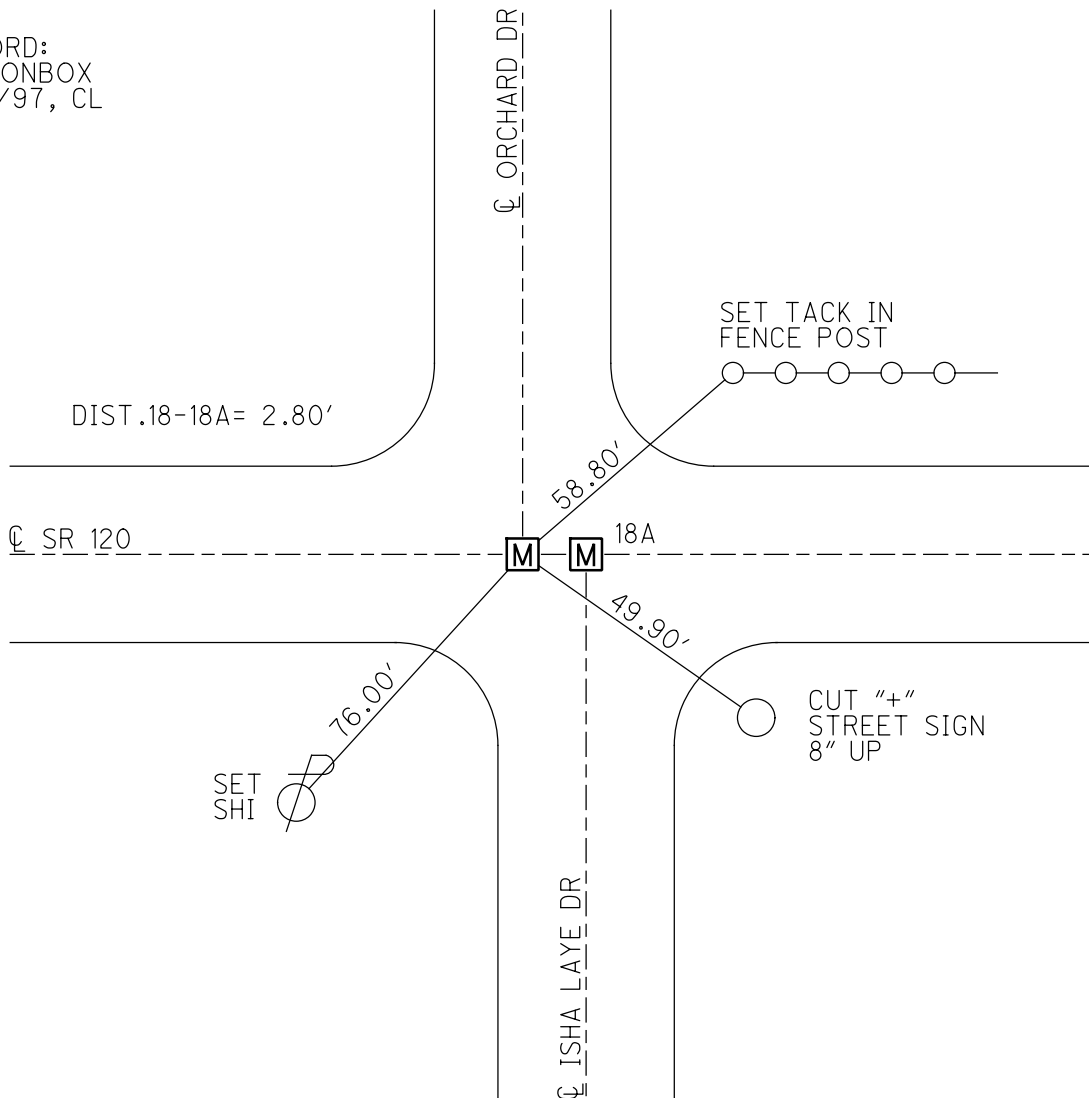
GEOID: _____

GRID: NORTHING: _____

EASTING: _____



RECORD:
FD MONBOX
7/15/97, CL



O.D.O.T. DISTRICT 2 SURVEY OFFICE

PERSONNEL _____

REFERENCE NO. 18

SHEET 10 OF 15

NOTES LOENRKE

H.C. _____

DATE 7-15-97

ROUTE S.R. 120

R.C. Huss

WEATHER FAIR

COUNTY LUCAS

Cox F

TEMP. +82° F

TOWNSHIP _____

SECTION City of Toledo

T _____ R _____

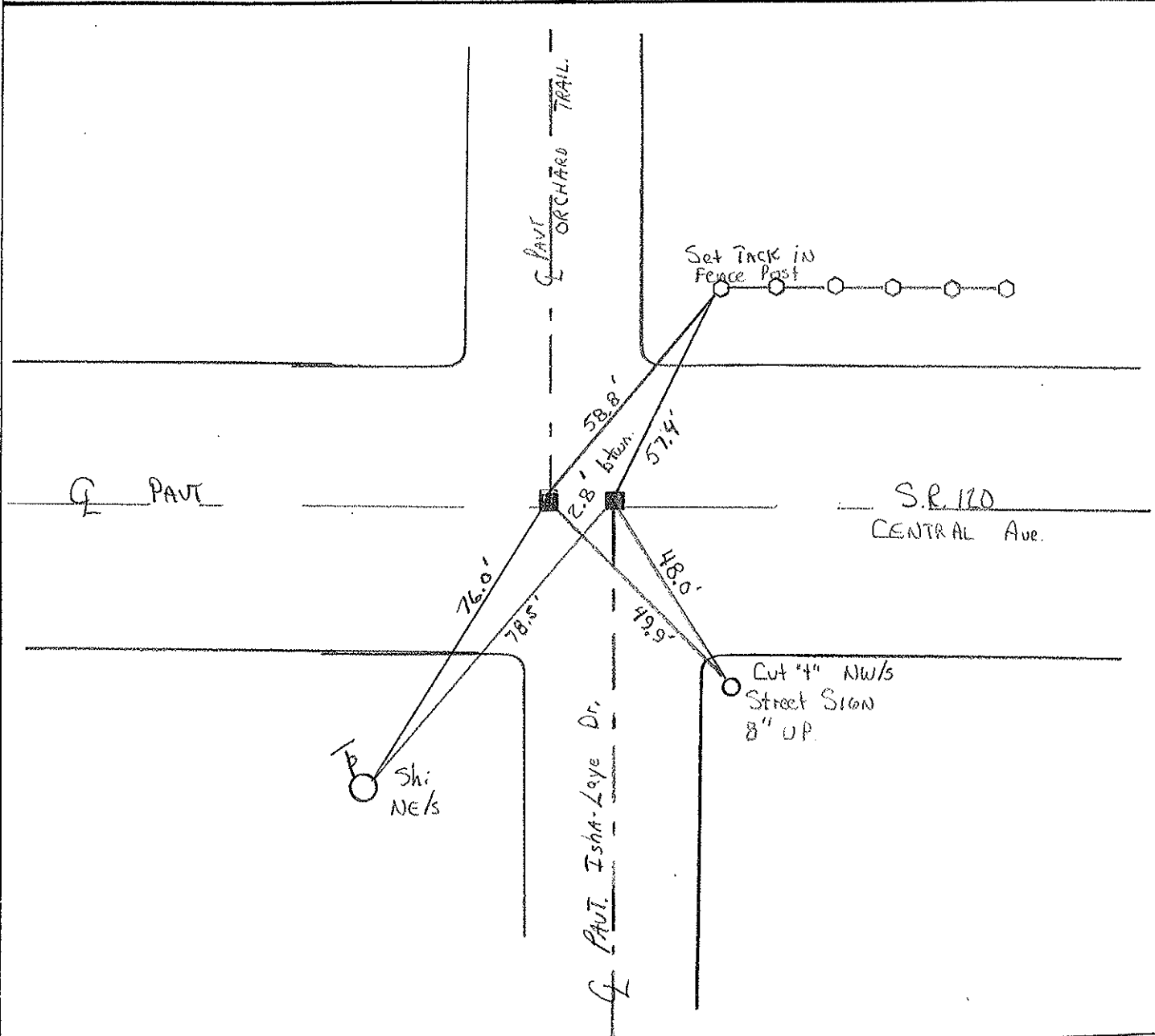
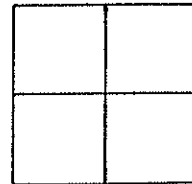
TYPE MONUMENT Mon. Box - Un OPEN

ON SURFACE - ~~BELOW~~ Yes

~~LEFT - & PAV'T.~~ - ~~RIGHT~~ Yes

TO EDGE PAVEMENT

S.L.M. 20+404 E 20+405 Km.



PERSONNEL	TITLE	PERSONNEL	TITLE
Tamsic			
Neuser			
Vanya			
Granata			

COUNTY Lucas DATE Sept. 11, 1972
 S. R. U.S. 120 WEATHER _____
 SEC. Central Ave TEMP. _____

DESCRIPTION Central LEFT CENTER LINE RIGHT JOB NO. _____

