

O.D.O.T. DISTRICT 2 SURVEY OFFICE (USE ONLY)

PERSONNEL

REFERENCE NO. 22

SHEET 16 OF 37

NOTES LOEHRKE DATE 7/15/97  
 H.C. LOEHRKE WEATHER FAIR  
 R.C. HUSS TEMP. 84°  
COX

ROUTE SR 120  
 COUNTY LUCAS  
 TOWNSHIP CITY OF TOLEDO  
 SECTION 30  
 T 9 S R 7 E

DWG BY NIESE PID \_\_\_\_\_

TYPE MONUMENT MONBOX

ON SURFACE - ~~BELOW~~ ON

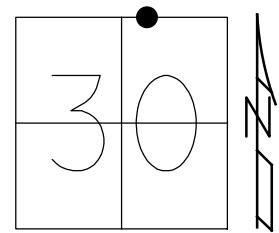
OFFSET CL PAVEMENT ON LT : RT

- TO - EDGE PAVEMENT

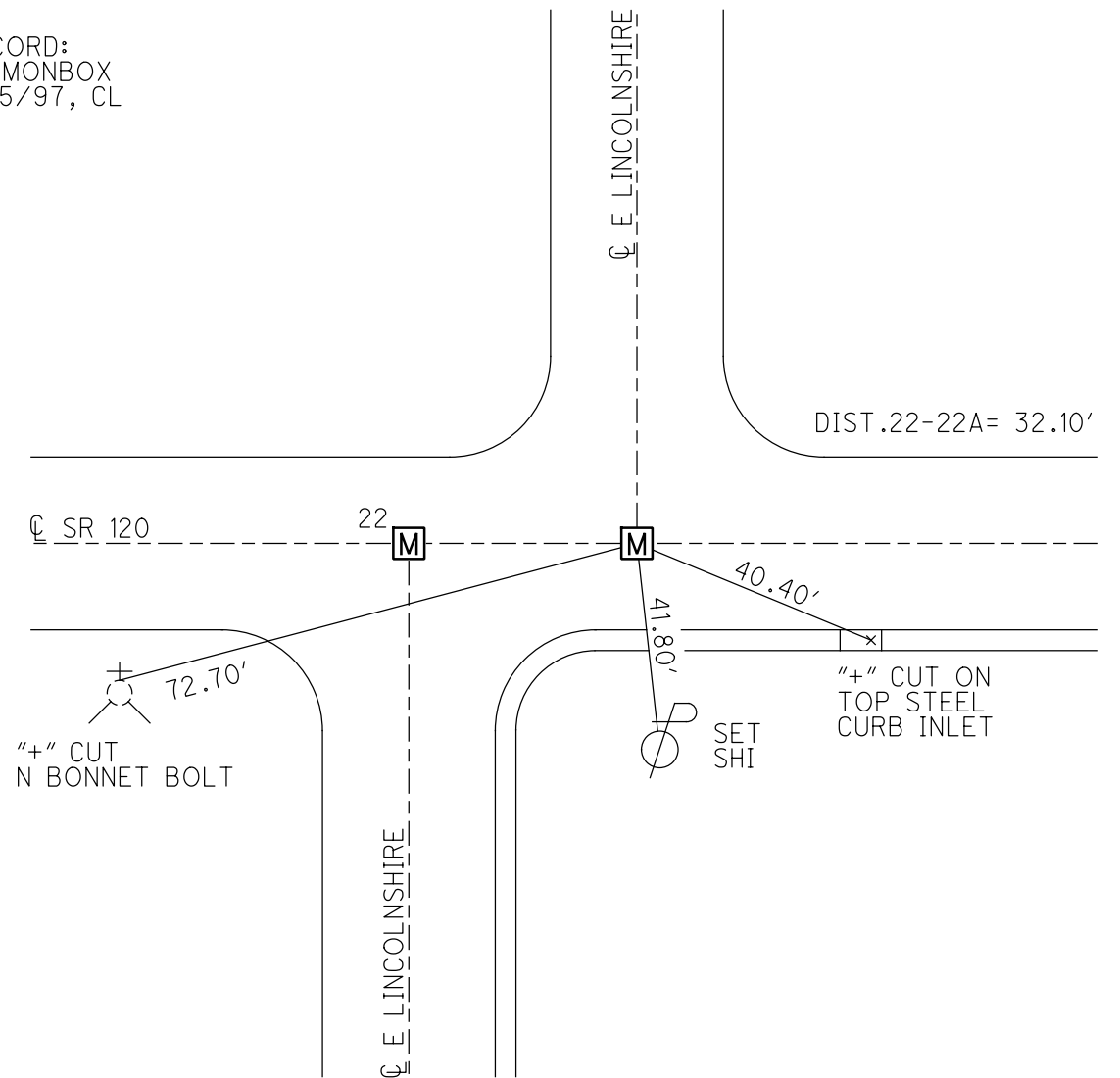
STATION: 679+79

HORIZ.DATUM: \_\_\_\_\_ GEOID: \_\_\_\_\_

GRID: NORTHING: \_\_\_\_\_ EASTING: \_\_\_\_\_



RECORD:  
 FD MONBOX  
 7/15/97, CL



# O.D.O.T. DISTRICT 2 SURVEY OFFICE

PERSONNEL

REFERENCE NO. 22

SHEET 14 OF 15

NOTES LOEHRKE / Huss

H.C. LOEHRKE

DATE 7-15-97

ROUTE S.R. 120

R.C. Huss

WEATHER Fair

COUNTY LUCAS

Cox P

TEMP. +84° F

TOWNSHIP \_\_\_\_\_

SECTION City of Toledo

T. \_\_\_\_\_ R. \_\_\_\_\_

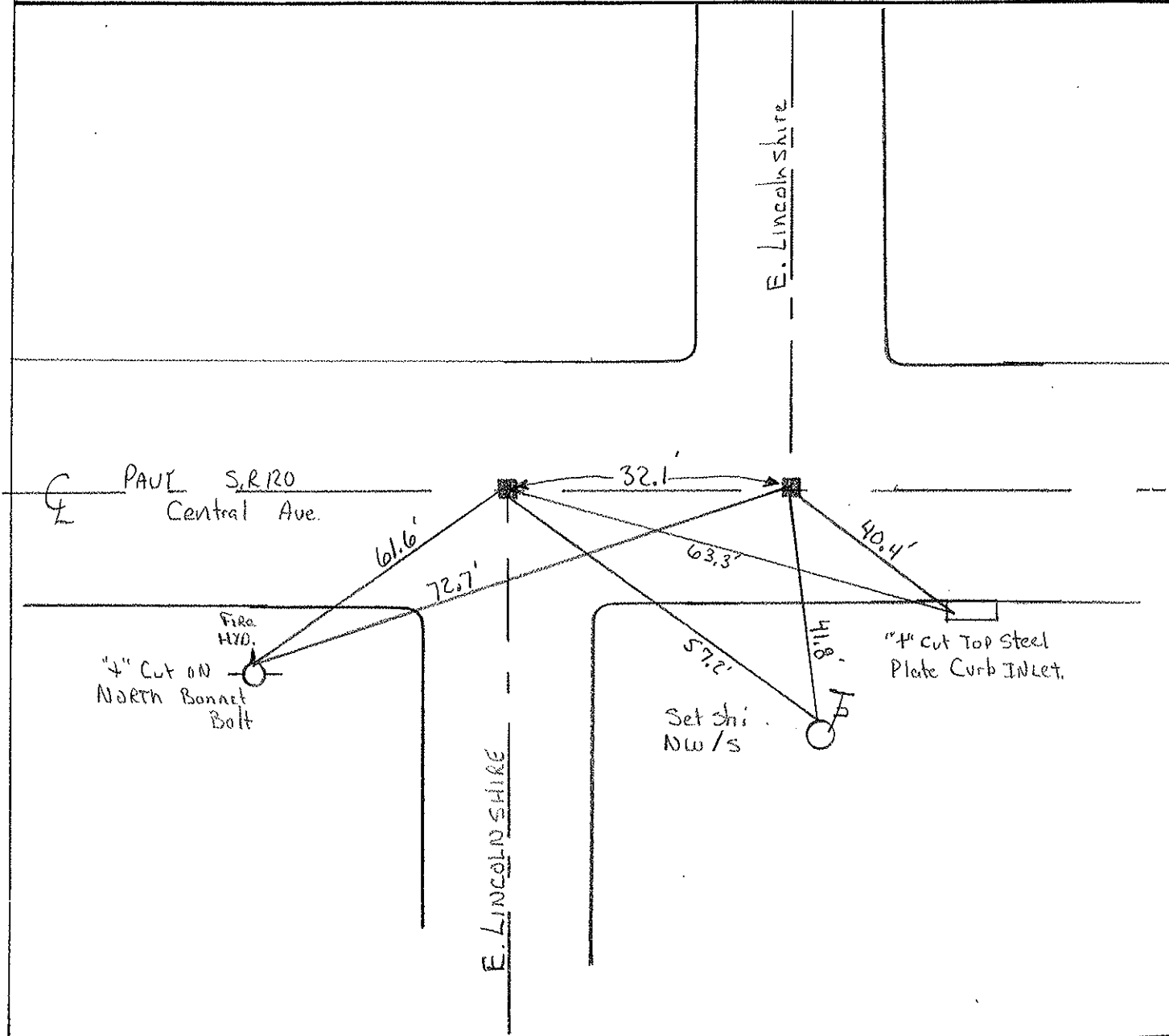
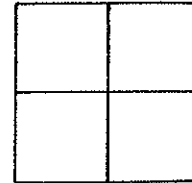
TYPE MONUMENT Mon Box - UNOPEN

ON SURFACE - BELOW Yes

LEFT - & PAV'T. - RIGHT Yes

TO \_\_\_\_\_ EDGE PAVEMENT

S.L.M. 20+710 & 20+720 Km



PERSONNEL TITLE PERSONNEL TITLE

COUNTY Lucas

DATE Sept. 11, 1972

Tomsic

Nasser

Vanyo

Granata

S. R. U.S. 120

WEATHER

SEC. Central Ave.

TEMP.

DESCRIPTION

Central Ave

JOB NO.

LEFT

CENTER LINE

RIGHT

