

O.D.O.T. DISTRICT 2 SURVEY OFFICE (USE ONLY)

PERSONNEL _____

REFERENCE NO. 23 A

SHEET 18 OF 37

NOTES CITY _____ DATE 5/10/94

H.C. OF _____ WEATHER FAIR

R.C. TOLEDO TEMP. 57°

ROUTE _____ SR 120

COUNTY LUCAS

TOWNSHIP CITY OF TOLEDO

SECTION 30

DWG BY NIESE PID _____

T 9 S R 7 E

TYPE MONUMENT MONBOX W/ BRASS PLATE

ON SURFACE - ~~BELOW~~ ON _____

OFFSET \odot PAVEMENT _____ LT : RT

_____ TO _____ EDGE PAVEMENT

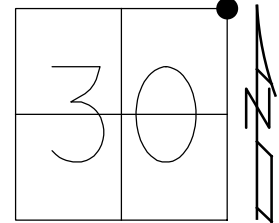
STATION: 701+18.4

HORZ. DATUM: _____

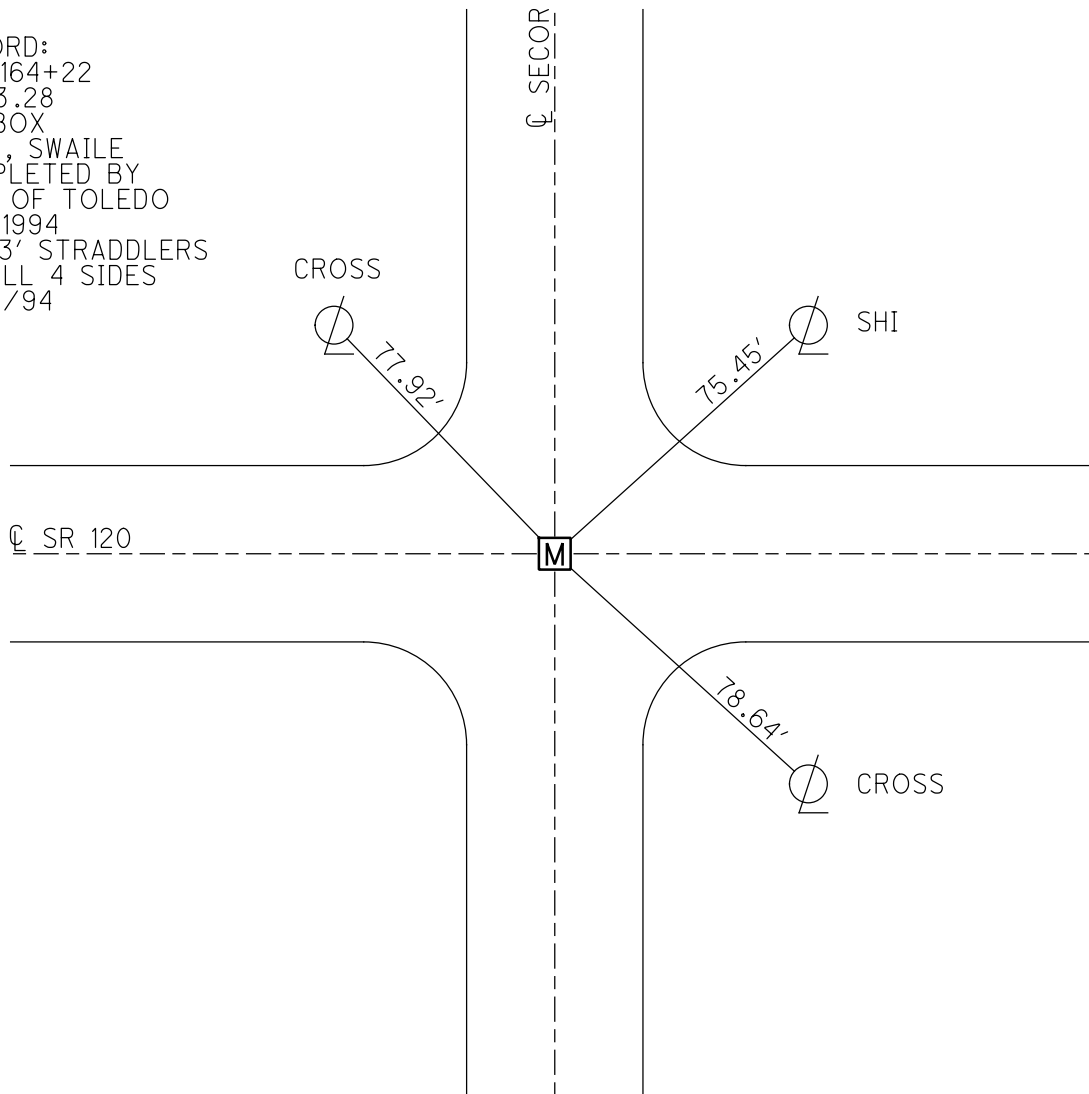
GEOID: _____

GRID: NORTHING: _____

EASTING: _____



RECORD:
 STA 164+22
 MP 13.28
 MONBOX
 2/94, SWAILE
 COMPLETED BY
 CITY OF TOLEDO
 MAY 1994
 SET 3' STRADDLERS
 ON ALL 4 SIDES
 11/22/94



MONUMENT REFERENCE

LOCATION

ATLAS No. _____

Central @ Secor

SEC. _____

164+22

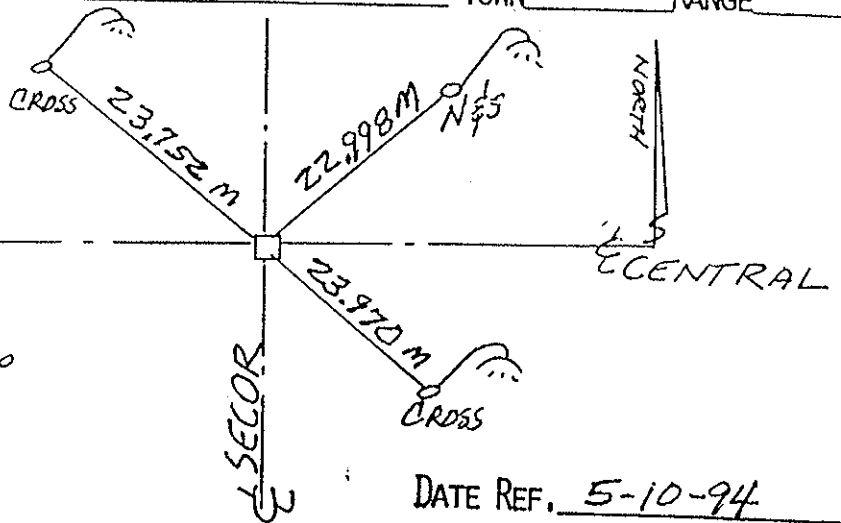
TOWN _____

RANGE _____

NOTE:

This series of References were completed by the City of Toledo for a Resurface project May-1994.

Bronze Plate
w/dimple
in Mon. Box



DATE REF. 5-10-94

NOTES: 11-22-94

After the project was paved, 4 STRADDLE nails/shims were set at each monument BOX AS

shown:



The Boxes were then brought to the surface with adjustment Rings.

MONUMENT REFERENCE

LOCATION

ATLAS No. _____

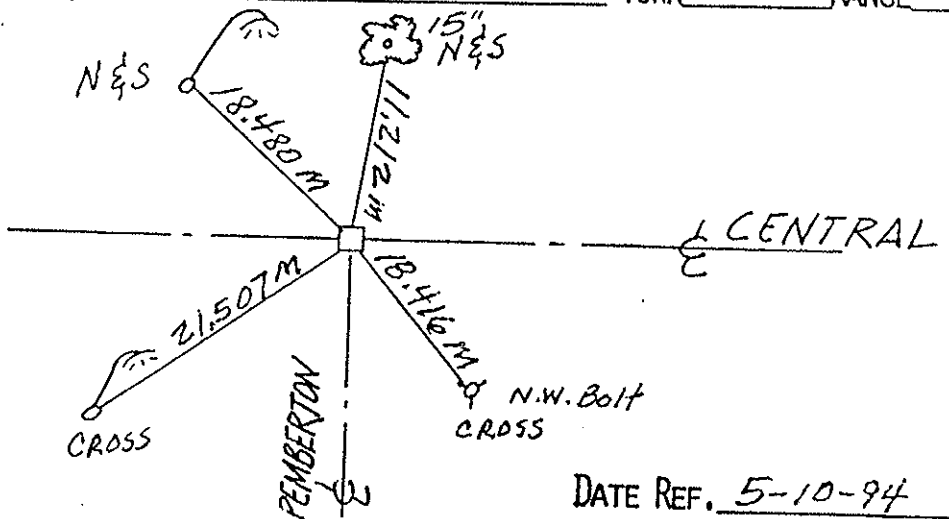
Central @ Pemberton

SEC. _____

171+91 Mon. Box

TOWN _____

RANGE _____

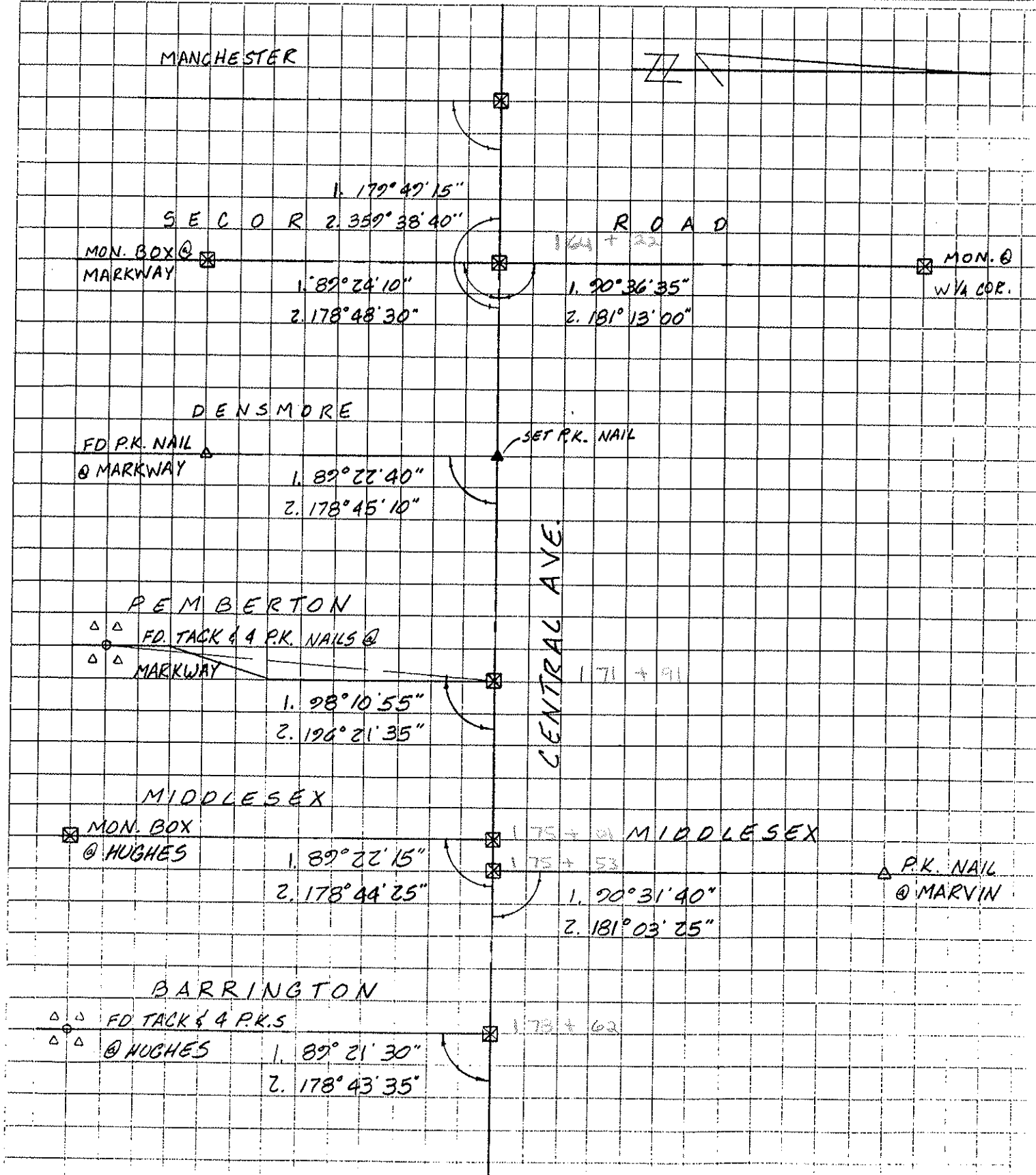


DATE REF. 5-10-94

| PERSONNEL | TITLE | PERSONNEL | TITLE |
|-----------|-------|-----------|-------|
| SWAILE | | | |
| WARNAK | | | |
| MALAK | / | | |

PROJECT CENTRAL AVENUE DATE 2-24
PROJECT LIMITS SECOR TO JACKMAN WEATHER CLEAR-SNOW-MILD
FROM STA. _____ TO STA. _____ TEMP _____

DESCRIPTION CONTROL SHEET



PERSONNEL TITLE PERSONNEL TITLE

COUNTY Lucas

DATE 6-3-53

S. R. U.S. # 20

WEATHER

SEC.

TEMP.

DESCRIPTION

LEFT

CENTER LINE

RIGHT

JOB NO.

Int. Indian Rd.
Brass Mon. (Adj)

#70

S.W. to witness mon. 46.42
N.E. to witness mon. 48.80
N.W. to shiner in P.P. 58.54
N.W. to witness mon. 47.18

Int. To Imadge Rd.
Brass Mon. (Adj)

#71

S.W. To shiner in T. P. e. 51.43
S.W. to witness mon. 49.35
N.E. to witness mon. 49.68
N.W. to shiner in P.P. 58.54
S.E. to N.W. cor. brick pillar post. 72.66

1/4 cor. sec. 19 - E-7-E.
Brass Mon (Adj) sta 565 + 02.60

#72

N.W. to shiner in 30' Elm 48.90
N.E. to shiner in 15' maple 46.72
S.S.W. to lower rim Hyd 38.97

Int. Secor Rd.
Brass Mon. (Adj)

#73

N.W. to + in Rad. curb 42.20
N.E. to + in rad. curb 41.29
S.E. to steel/st. sign post set in
Conc. 45.02
N.E. to near cor. of Conc. base light T.P. 42.70
N.W. to steel sign post 39.70
S.E. to sign post 40.20

1/4 cor. sec. 20 - 18-7-E.

#74

N. to shiner in 30' oak 32.00
N.W. to shiner in 12' Elm 35.01
S.W. to shiner in 12' maple 72.35
S. to shiner in 15' triple Elm 38.29