

O.D.O.T. DISTRICT 2 SURVEY OFFICE (USE ONLY)

PERSONNEL

REFERENCE NO. 24

SHEET 19 OF 37

NOTES LOEHRKE

DATE 5/19/94

ROUTE SR 120

H.C. CANTERBURY

WEATHER NICE

COUNTY LUCAS

R.C. VOGEL

TEMP. 55°

TOWNSHIP CITY OF TOLEDO

SECTION 29

DWG BY NIESE PID \_\_\_\_\_

T 9 S R 7 E

TYPE MONUMENT P.K. NAIL

ON SURFACE - ~~BELOW~~ ON

OFFSET  $\phi$  PAVEMENT 0.7' LT : ~~RT~~

34.1' TO LT CURB

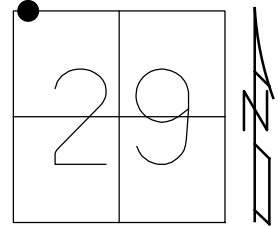
STATION: 704+35

HORIZ.DATUM: \_\_\_\_\_

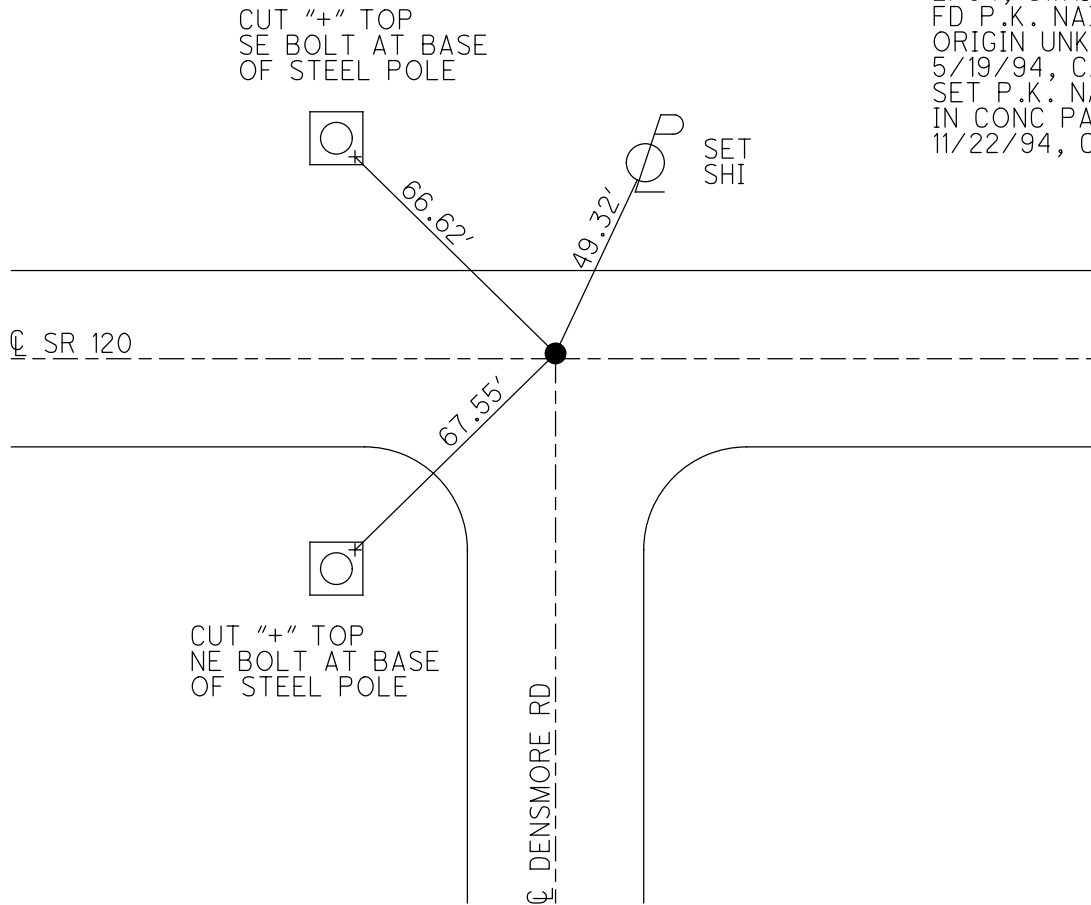
GEOID: \_\_\_\_\_

GRID: NORTHING: \_\_\_\_\_

EASTING: \_\_\_\_\_



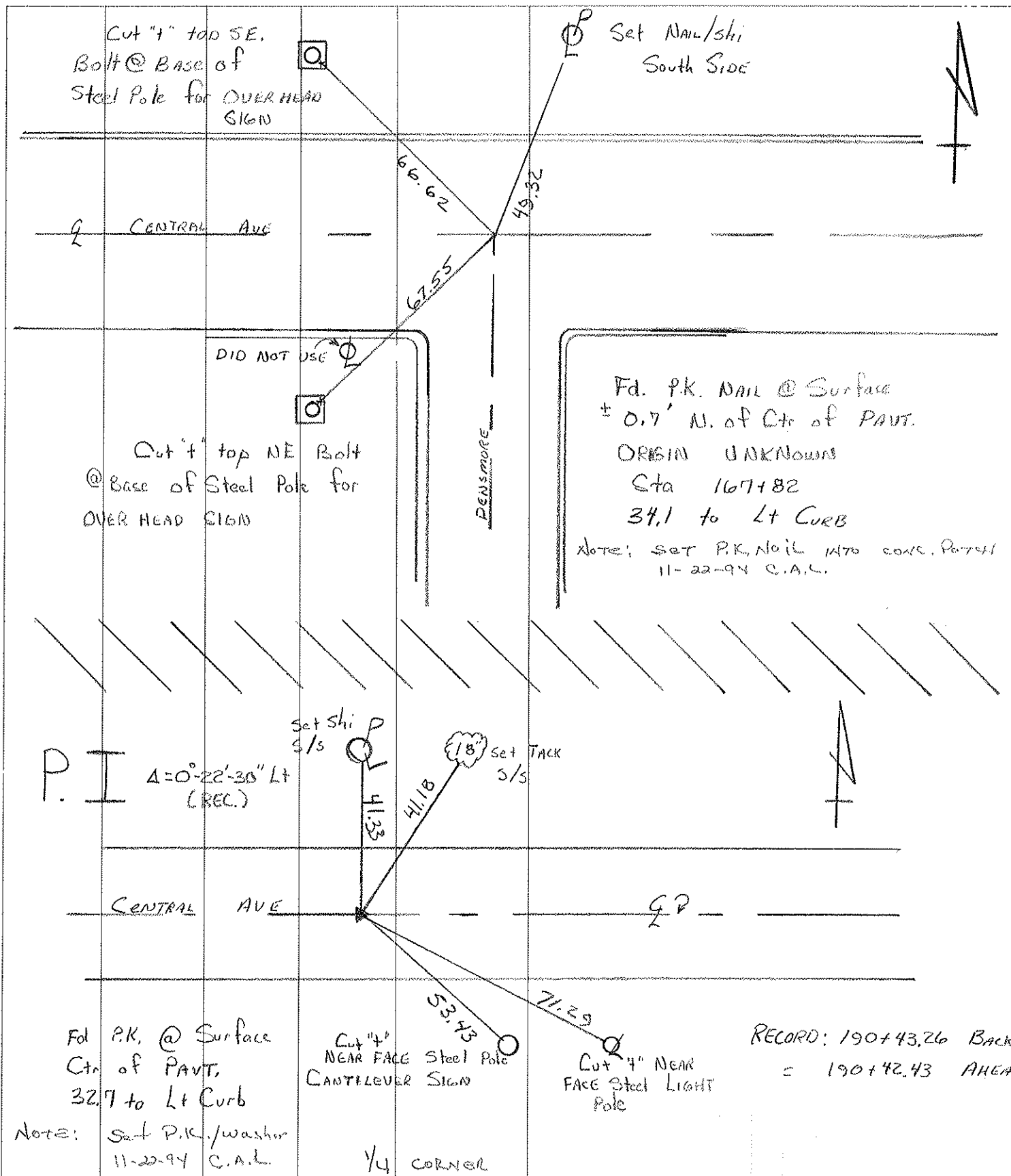
RECORD:  
 STA 167+82  
 SET P.K. NAIL  
 2/94, SWAILE  
 FD P.K. NAIL  
 ORIGIN UNKNOWN  
 5/19/94, CAL  
 SET P.K. NAIL  
 IN CONC PATCH  
 11/22/94, CAL



PERSONNEL	TITLE	PERSONNEL	TITLE
LOEHRKE	III		
CANTERBURY	Q HC		
VOGEL	Q RC		

COUNTY LUCAS DATE 5-19-94  
 S. R. S.R. 120 - CENTRAL WEATHER NICE  
 SEC. 13.5 TEMP. 75.5

DESCRIPTION REF TIES SLM- 13.34 JOB NO. \_\_\_\_\_  
 LEFT CENTER LINE RIGHT



PERSONNEL	TITLE	PERSONNEL	TITLE
SWAILE	<u>EW</u>		
WARNAK	<u>T</u>		
MALAK	<u>/</u>		

PROJECT CENTRAL AVENUE DATE 2-24  
 PROJECT LIMITS SECOR TO JACKMAN WEATHER CLEAR-SNOW-MILD  
 FROM STA. \_\_\_\_\_ TO STA. \_\_\_\_\_ TEMP \_\_\_\_\_

DESCRIPTION CONTROL SHEET

