

O.D.O.T. DISTRICT 2 SURVEY OFFICE (USE ONLY)

PERSONNEL \_\_\_\_\_

REFERENCE NO. 24 G

SHEET 27 OF 37

NOTES CITY \_\_\_\_\_ DATE 5/10/94  
 H.C. OF \_\_\_\_\_ WEATHER \_\_\_\_\_  
 R.C. TOLEDO \_\_\_\_\_ TEMP. \_\_\_\_\_

ROUTE SR 120  
 COUNTY LUCAS  
 TOWNSHIP CITY OF TOLEDO  
 SECTION 29  
 T 9 S R 7 E

DWG BY NIESE PID \_\_\_\_\_

TYPE MONUMENT MONBOX

ON SURFACE - ~~BELOW~~ ON \_\_\_\_\_

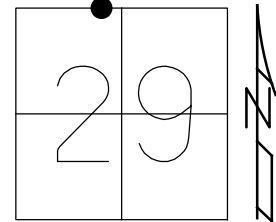
OFFSET  $\odot$  PAVEMENT \_\_\_\_\_ LT : RT

\_\_\_\_\_ TO \_\_\_\_\_ EDGE PAVEMENT

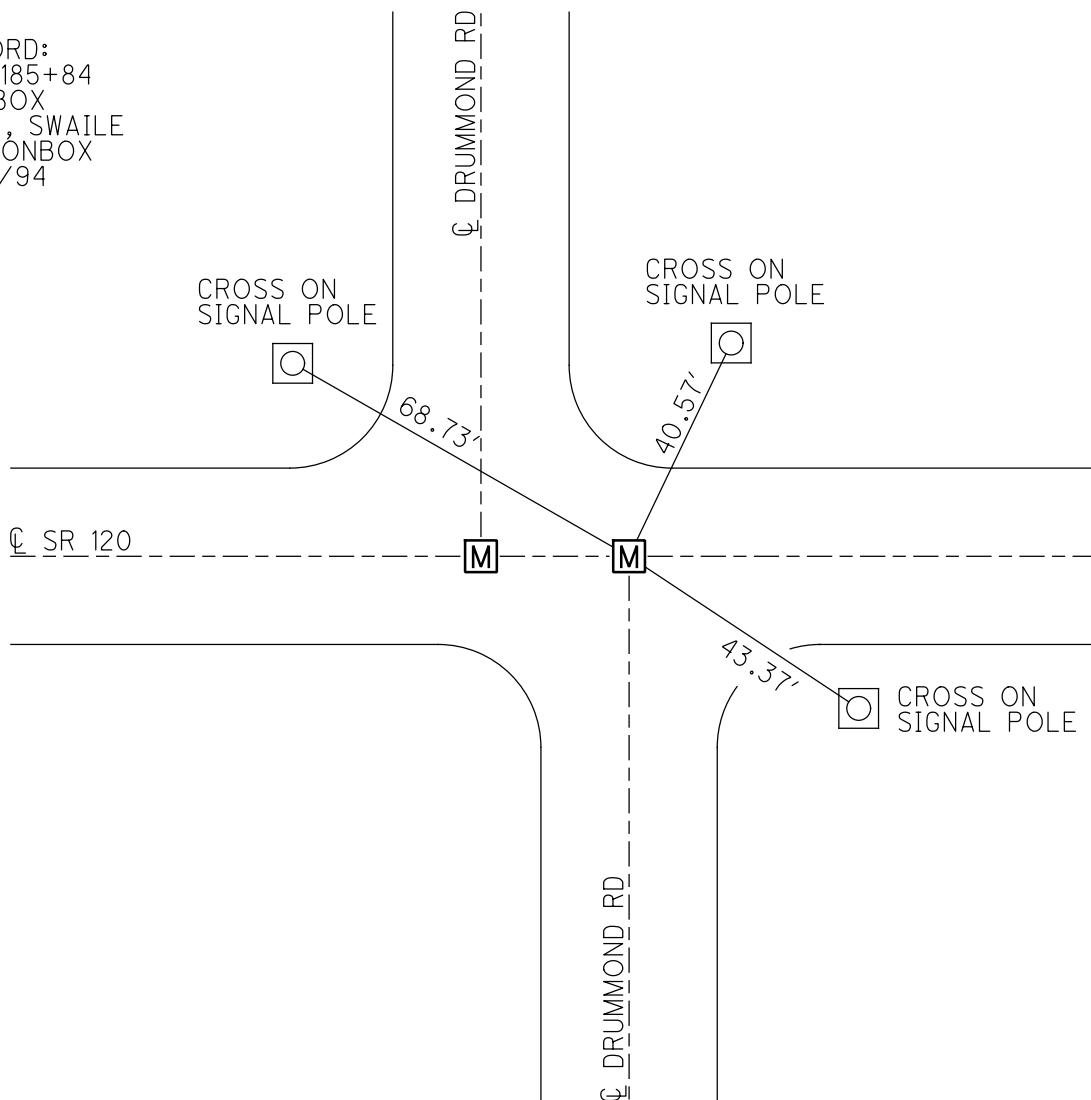
STATION: 722+11

HORZ. DATUM: \_\_\_\_\_ GEOID: \_\_\_\_\_

GRID: NORTHING: \_\_\_\_\_ EASTING: \_\_\_\_\_



RECORD:  
 STA 185+84  
 MONBOX  
 2/94, SWAILE  
 FD MONBOX  
 5/10/94



MONUMENT REFERENCE

LOCATION

Central @ Meadowwood

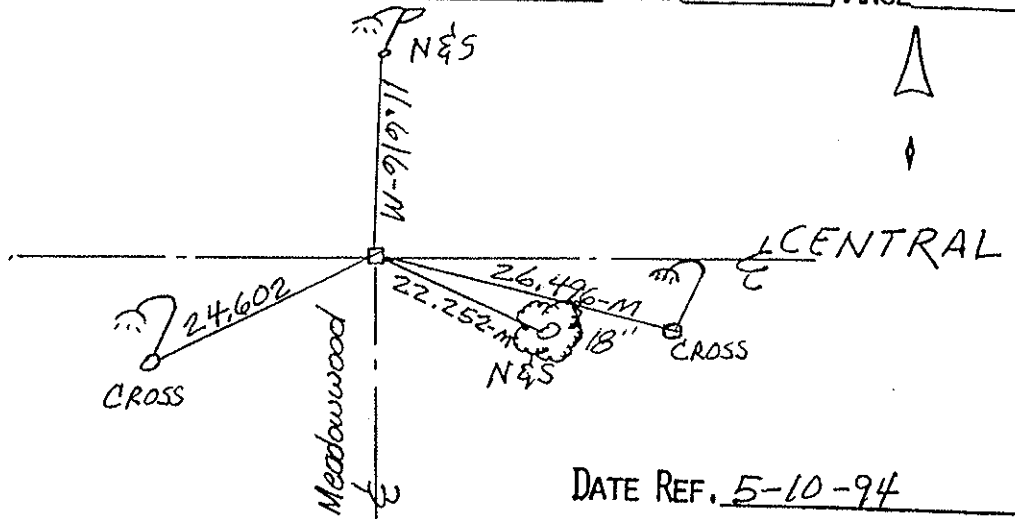
ATLAS No. \_\_\_\_\_

SEC. \_\_\_\_\_

182 + 22 Mon Box

TOWN \_\_\_\_\_

RANGE \_\_\_\_\_



MONUMENT REFERENCE

LOCATION

Central @ Drummond

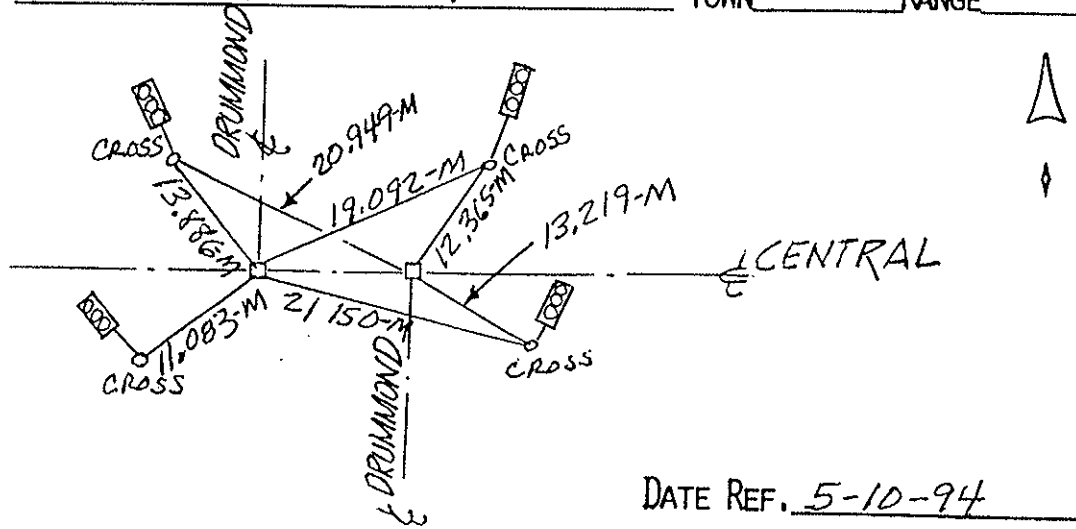
ATLAS No. \_\_\_\_\_

SEC. \_\_\_\_\_

Mon. Box 185 + 50 & Mon. Box 185 + 84

TOWN \_\_\_\_\_

RANGE \_\_\_\_\_



| PERSONNEL | TITLE | PERSONNEL | TITLE |
|-----------|-------|-----------|-------|
| SWAILE    | AD    |           |       |
| WARNKA    | TK    |           |       |
| MALAK     | /     |           |       |

PROJECT CENTRAL AVE. DATE 2-94  
 PROJECT LIMITS SECOR TO JACKMAN WEATHER CLOUDY-SNOW  
 FROM STA. \_\_\_\_\_ TO STA. \_\_\_\_\_ TEMP \_\_\_\_\_

DESCRIPTION CONTROL SHEET

