

O.D.O.T. DISTRICT 2 SURVEY OFFICE (USE ONLY)

PERSONNEL _____

REFERENCE NO. 24 J

SHEET 21 OF 37

NOTES LOEHRKE

DATE 5/19/94

ROUTE SR 120

H.C. CANTERBURY

WEATHER NICE

COUNTY LUCAS

R.C. VOGEL

TEMP. 55°

TOWNSHIP CITY OF TOLEDO

SECTION 29

DWG BY NIESE PID _____

T 9 S R 7 E

TYPE MONUMENT P.K. NAIL

ON SURFACE - ~~BELOW~~ ON

OFFSET Q PAVEMENT ON LT : RT

32.7' TO LT ~~EDGE PAVEMENT~~ CURB

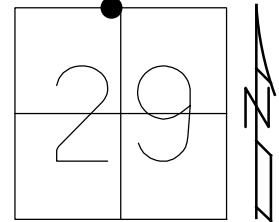
STATION: 726+69

HORIZ.DATUM: _____

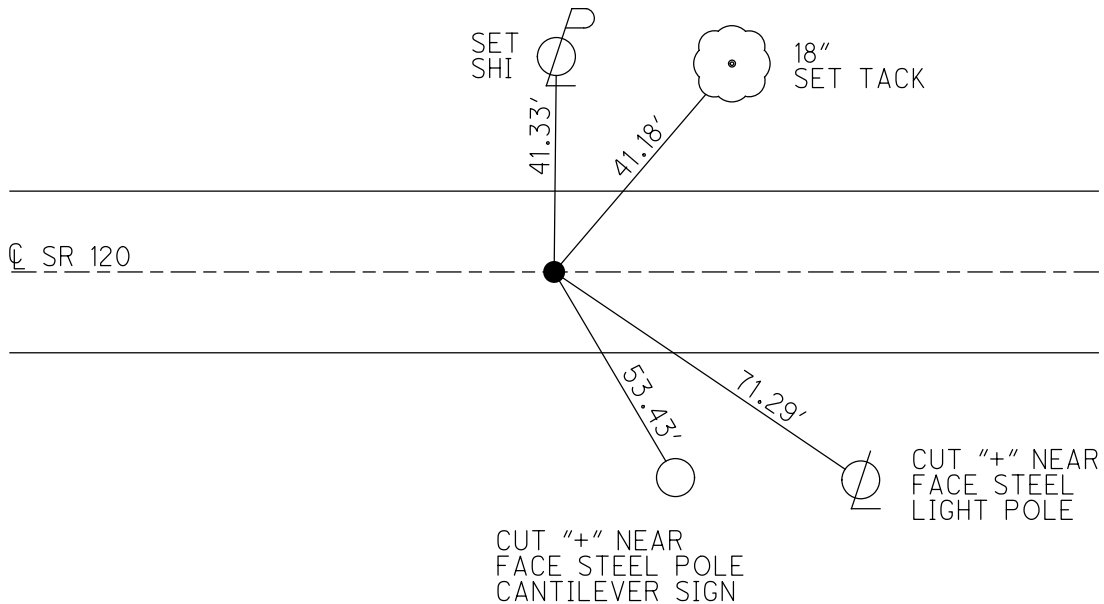
GEOID: _____

GRID: NORTHING: _____

EASTING: _____



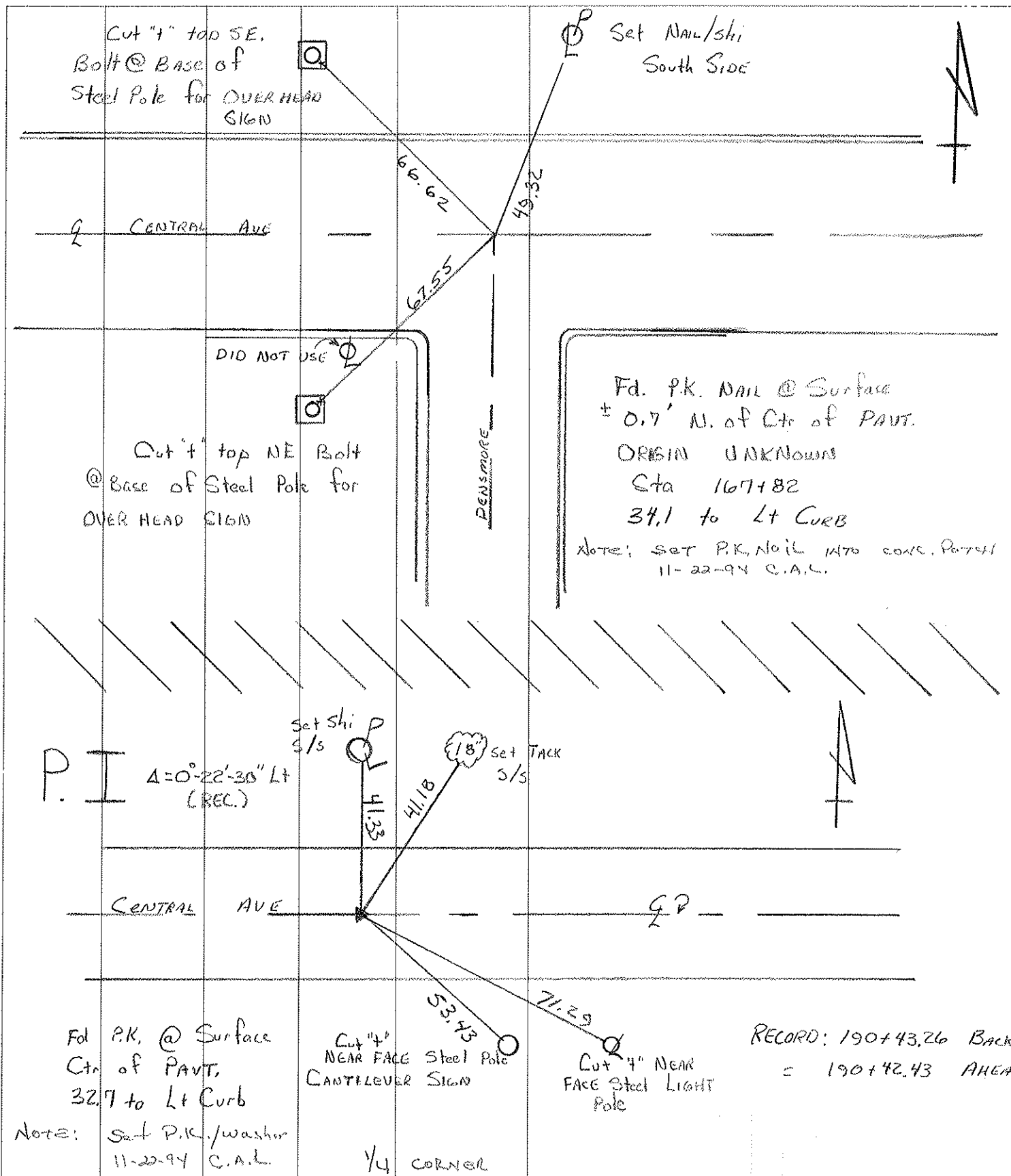
RECORD: P.I.
 STA 190+42.43
 $\Delta = 00^{\circ}22'30''$ (REC)
 FD P.K.
 5/19/94, CAL
 SET P.K./WASHER
 11/22/94, CAL



PERSONNEL	TITLE	PERSONNEL	TITLE
LOEHRKE	III		
CANTERBURY	Q HC		
VOGEL	Q RC		

COUNTY LUCAS DATE 5-19-94
 S. R. S.R. 120 - CENTRAL WEATHER NICE
 SEC. 13.5 TEMP. 75.5

DESCRIPTION REF TIES SLM- 13.34 JOB NO.



PERSONNEL	TITLE	PERSONNEL	TITLE
SWAILE			
WARNAKA			
MALAK	/		

PROJECT CENTRAL AVENUE DATE 2-24
 PROJECT LIMITS SECOR TO JACKMAN WEATHER CLEAR-SNOW-MILD
 FROM STA. _____ TO STA. _____ TEMP _____

DESCRIPTION CONTROL SHEET

