

O.D.O.T. DISTRICT 2 SURVEY OFFICE (USE ONLY)

PERSONNEL _____ REFERENCE NO. 25 SHEET 37 OF 37

NOTES LOEHRKE DATE 5/19/94 ROUTE SR 120

H.C. CANTERBURY WEATHER NICE COUNTY LUCAS

R.C. VOGEL TEMP. 55° TOWNSHIP CITY OF TOLEDO

DWG BY NIESE PID _____ SECTION 29

T 9 S R 7 E

TYPE MONUMENT MONBOX

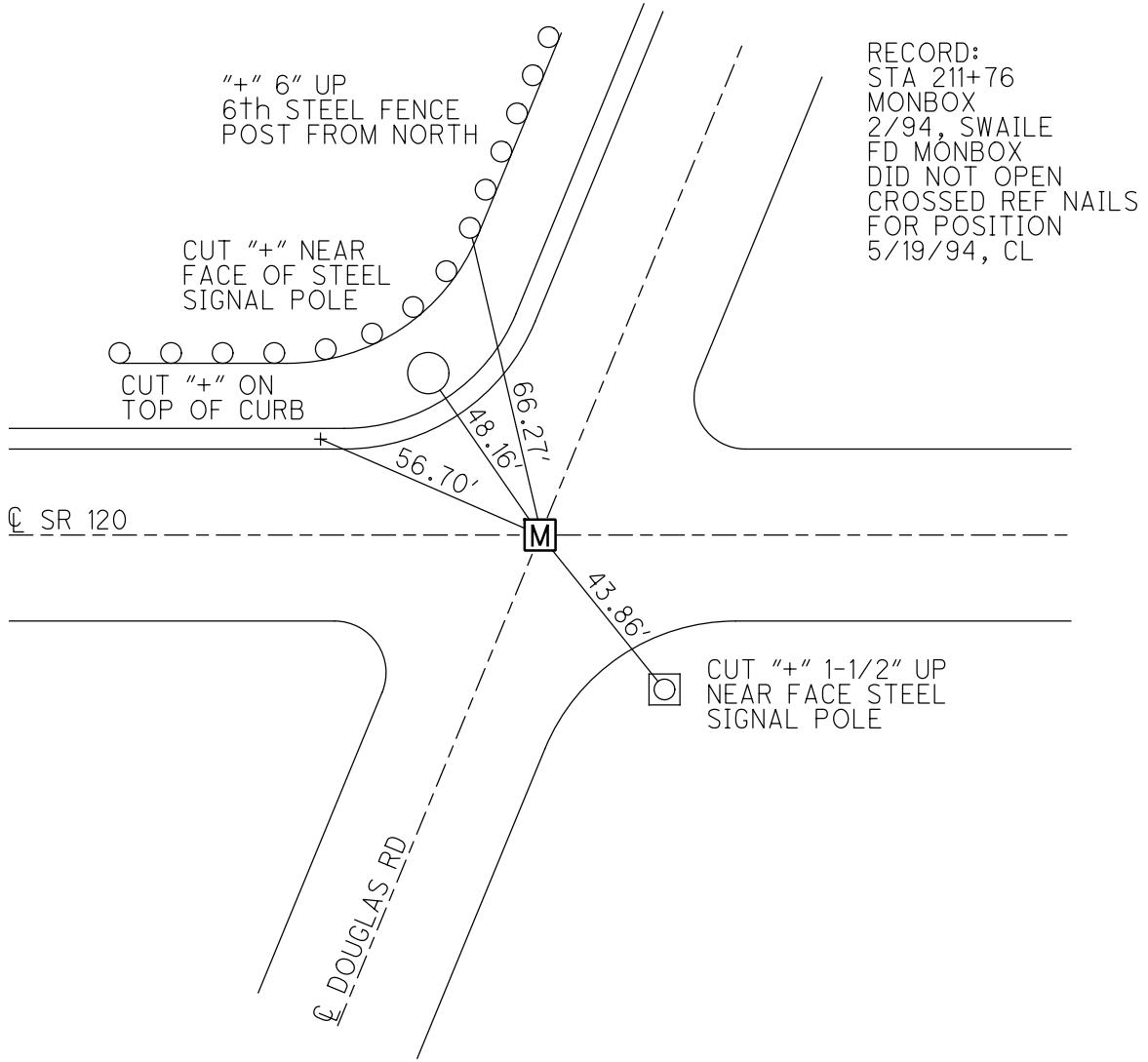
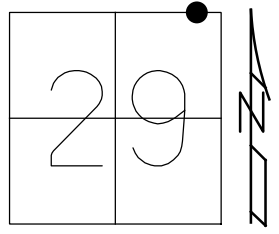
ON SURFACE - ~~BELOW~~ ON

OFFSET CL PAVEMENT ON LT : RT
TO EDGE PAVEMENT

STATION: 747+65

HORZ. DATUM: _____ GEOID: _____

GRID: NORTHING: _____ EASTING: _____



PERSONNEL	TITLE	PERSONNEL	TITLE
LOHRKE			
CANTERBURY			
VOGEL			

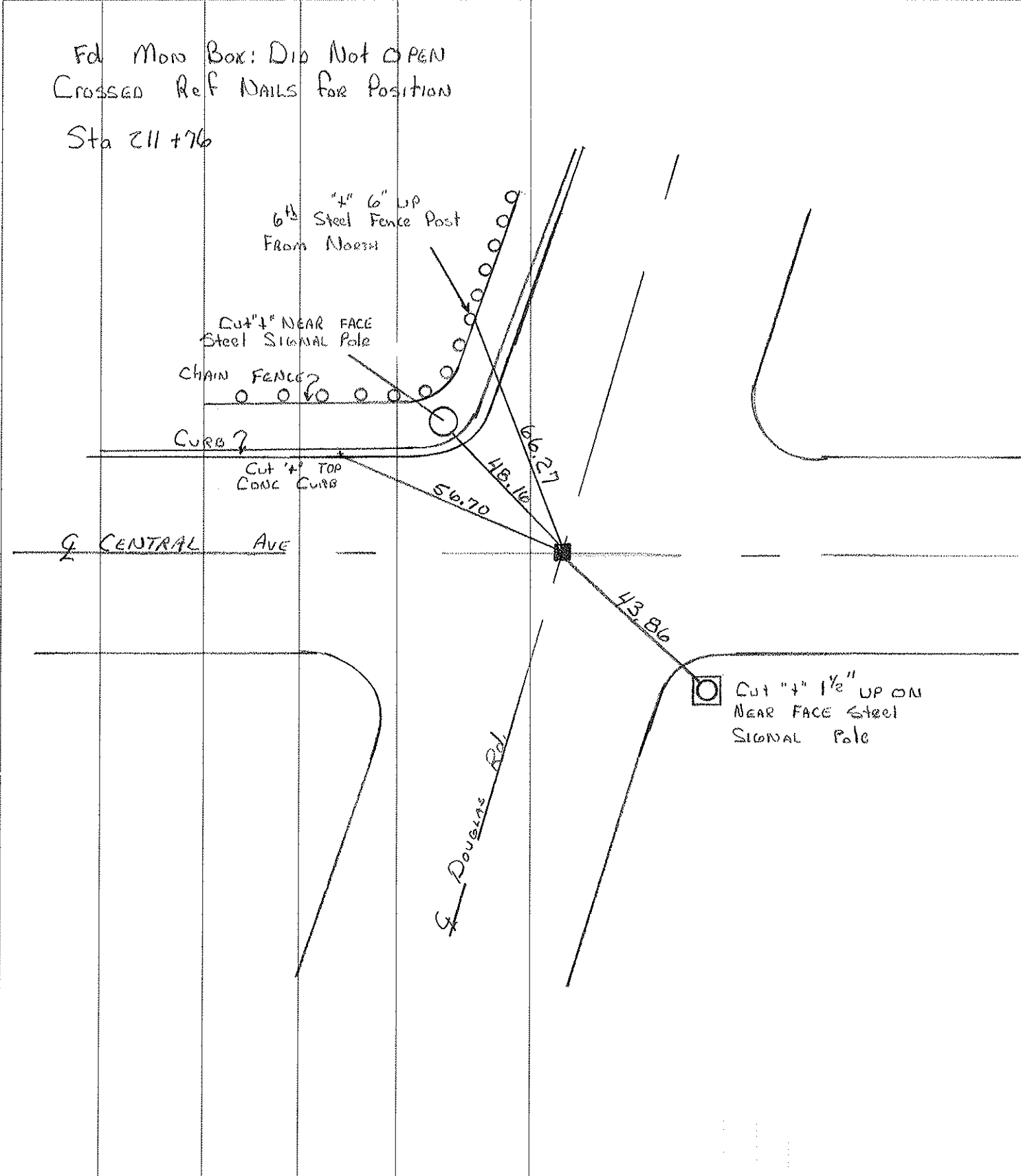
COUNTY LUCAS DATE 5-19-94

S. R. S.R. 120 (CENTRAL) WEATHER Nice

SEC. 13.5 TEMP. +55

DESCRIPTION	REF TIES	LEFT	CENTER LINE	RIGHT	JOB NO.

Fd Mon Box: Did Not OPEN
 Crossed Ref Nails for Position
 Sta 211 +76



6" 4" 6" UP Steel Fence Post From North

Cut 1" NEAR FACE Steel SIGNAL Pole

CHAIN FENCE?

CURB?

Cut 1" TOP CONC CURB

CENTRAL AVE

Douglas Rd

Cut 1" 1/2" UP ON NEAR FACE Steel SIGNAL Pole

66.27
48.16
56.70

43.86

PERSONNEL	TITLE	PERSONNEL	TITLE
SWAILE	LL		
WARNKA	TK		
MALAK	/		

PROJECT CENTRAL AVE DATE 2-94
 SECOR TO JACKMAN WEATHER SNOW-RAIN
 FROM STA. _____ TO STA. _____ TEMP _____

DESCRIPTION CONTROL SHEET

