

O.D.O.T. DISTRICT 2 SURVEY OFFICE (USE ONLY)

PERSONNEL

REFERENCE NO. 27

SHEET 2 OF 19

NOTES ALBRIGHT
 H.C. GRDUZINSKI
 R.C. STUBLESKI

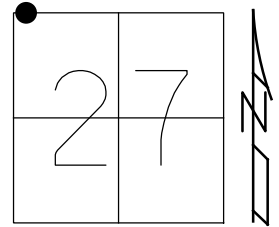
DATE 10/24/77
 WEATHER _____
 TEMP. 55°

ROUTE SR 120
 COUNTY LUCAS
 TOWNSHIP CITY OF TOLEDO
 SECTION 27
 T 9 S R 7 E

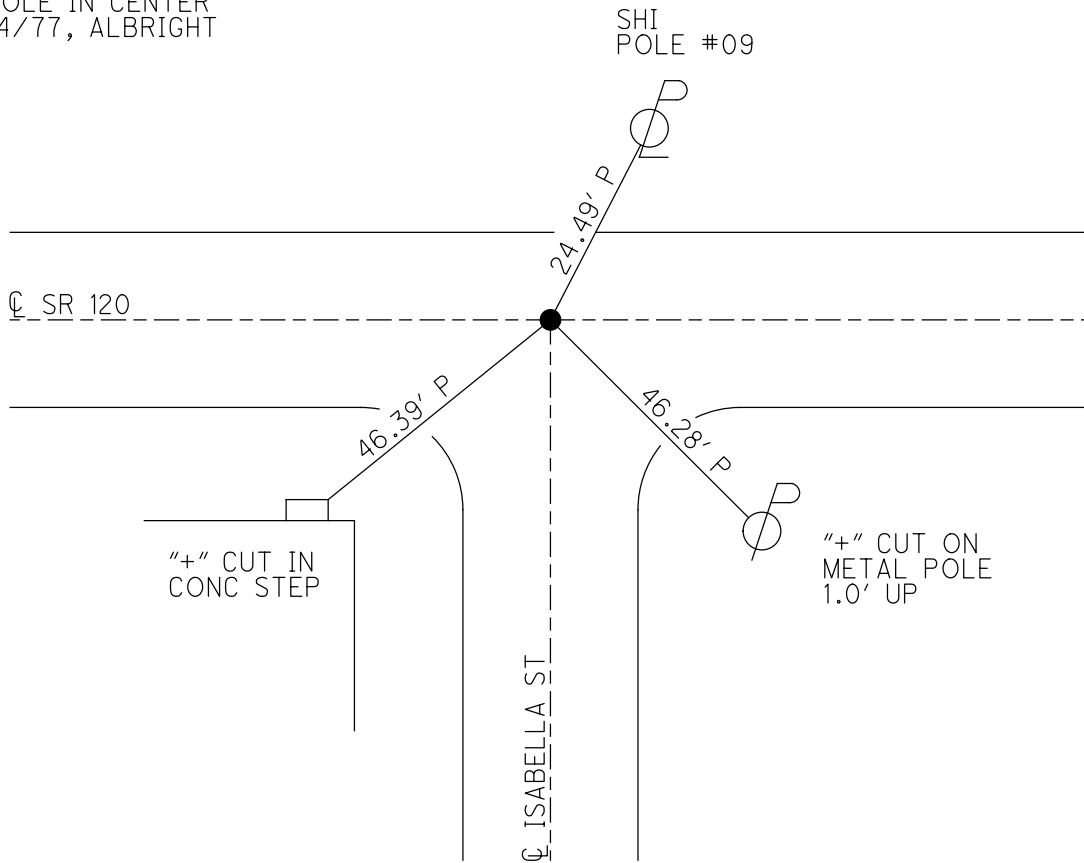
DWG BY NIESE PID _____

TYPE MONUMENT CMON W/ HOLE
 ON SURFACE - BELOW _____
 OFFSET ϕ PAVEMENT _____ LT : RT
 _____ TO _____ EDGE PAVEMENT
 STATION: 808+89

HORZ. DATUM: _____ GEOID: _____
 GRID: NORTHING: _____ EASTING: _____



RECORD:
 FD CMON
 W/ HOLE IN CENTER
 10/24/77, ALBRIGHT



PERSONNEL	TITLE	PERSONNEL	TITLE
Albright			
Grdziejnski			
Stublencki			

PROJECT _____ DATE 10/24/77

PROJECT LIMITS _____ WEATHER _____

FROM STA. _____ TO STA. _____ TEMP 55°

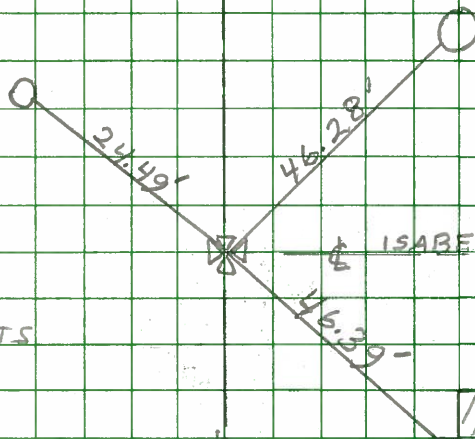
DESCRIPTION MONUMENT REF: CENTRAL AVE — JACKMAN TO CHERRY

CONC. MON. WITH HOLE IN CENTER

SHINNER IN LIGHT & POWER POLE #09

+ CUT ON METAL POWER POLE 1' ABOVE GROUND

NOTE: ALL MEASUREMENTS PLUMBED

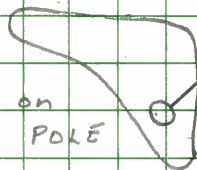


CONC. MON. WITH HOLE IN CENTER

#1625 CENTRAL

+ CUT ON CONC. WALL 1' ABOVE WALK

JACKMAN



+ CUT ON METALLIGHT POLE

+ CUT ON CONC. WALL 1' ABOVE WALK #1633

~~CENTRAL~~ CENTRAL