

O.D.O.T. DISTRICT 2 SURVEY OFFICE (USE ONLY)

PERSONNEL \_\_\_\_\_

REFERENCE NO. 32

SHEET 7 OF 19

NOTES ALBRIGHT

DATE 10/24/77

ROUTE SR 120

H.C. GRDUZINSKI

WEATHER \_\_\_\_\_

COUNTY LUCAS

R.C. STUBLESKI

TEMP. 55°

TOWNSHIP CITY OF TOLEDO

SECTION 26

DWG BY NIESE

PID \_\_\_\_\_

T 9 S R 7 E

TYPE MONUMENT CMON IN MONBOX

ON SURFACE - ~~BELOW~~ ON

OFFSET Q PAVEMENT \_\_\_\_\_ LT : RT

\_\_\_\_\_ TO \_\_\_\_\_ EDGE PAVEMENT

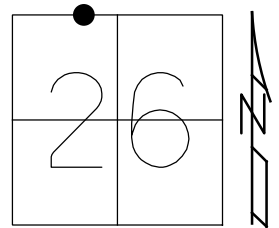
STATION: 876+48

HORZ.DATUM: \_\_\_\_\_

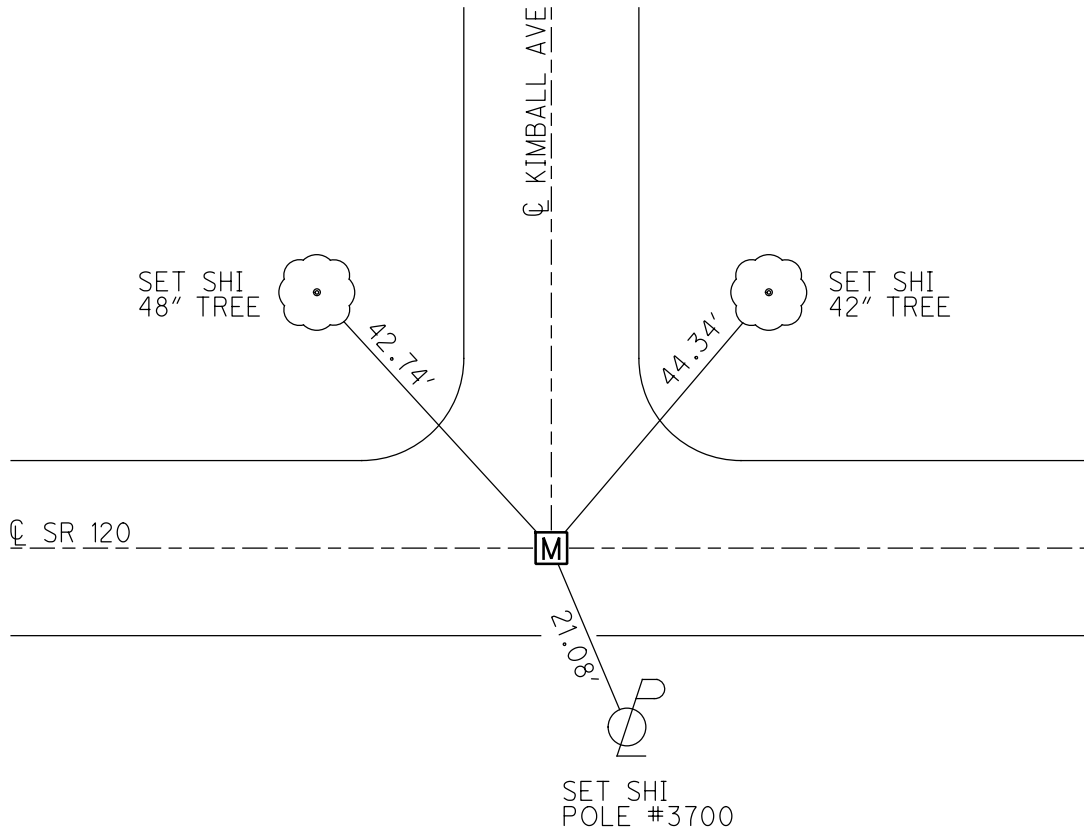
GEOID: \_\_\_\_\_

GRID: NORTHING: \_\_\_\_\_

EASTING: \_\_\_\_\_



RECORD:  
FD MONBOX  
W/ CMON  
10/24/77, ALBRIGHT



PERSONNEL	TITLE	PERSONNEL	TITLE
Albright			
Grduzinski			
Stableski			

PROJECT \_\_\_\_\_ DATE 10/24/77

PROJECT LIMITS \_\_\_\_\_ WEATHER \_\_\_\_\_

FROM STA. \_\_\_\_\_ TO STA. \_\_\_\_\_ TEMP 55°

DESCRIPTION MONUMENT REF. CENTRAL AVE - JACKMAN TO CHERRY

