

O.D.O.T. DISTRICT 2 SURVEY OFFICE (USE ONLY)

PERSONNEL _____

REFERENCE NO. 36

SHEET 11 OF 19

NOTES TOMCIC

DATE 9/15/72

ROUTE SR 120

H.C. NEUSER

WEATHER _____

COUNTY LUCAS

R.C. VANYO

TEMP. _____

TOWNSHIP CITY OF TOLEDO

GRANATA

DWG BY NIESE

PID _____

SECTION 26

T 9 S R 7 E

TYPE MONUMENT P.K. NAIL

ON SURFACE - BELOW _____

OFFSET C PAVEMENT _____ LT : RT

_____ TO _____ EDGE PAVEMENT

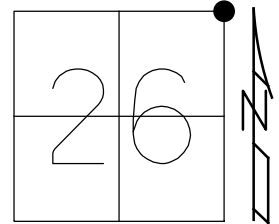
STATION: 922+41

HORZ.DATUM: _____

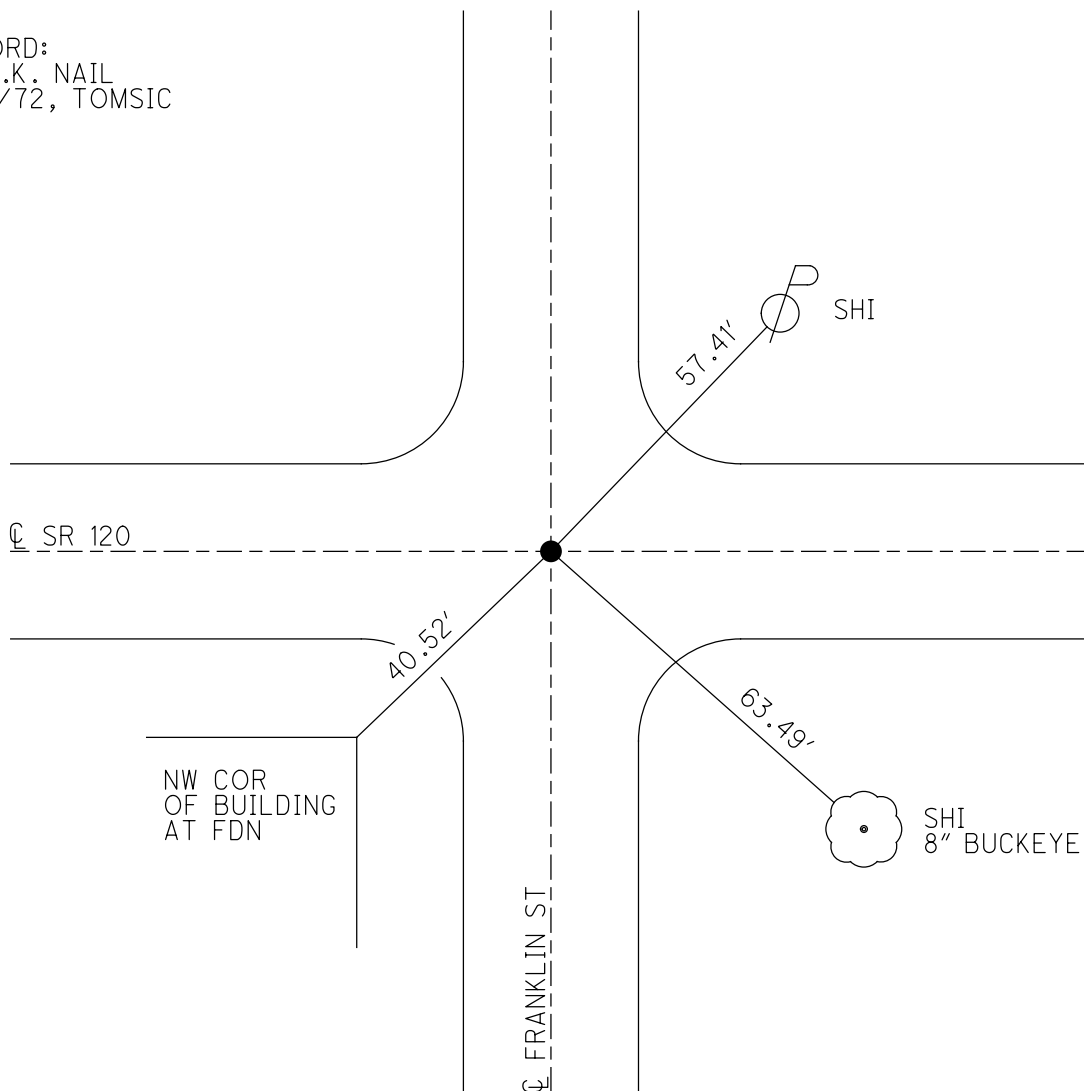
GEOID: _____

GRID: NORTHING: _____

EASTING: _____



RECORD:
FD P.K. NAIL
9/15/72, TOMCIC



PERSONNEL	TITLE	PERSONNEL	TITLE
Tomsic			
Neuser			
Janyo			
Granata			

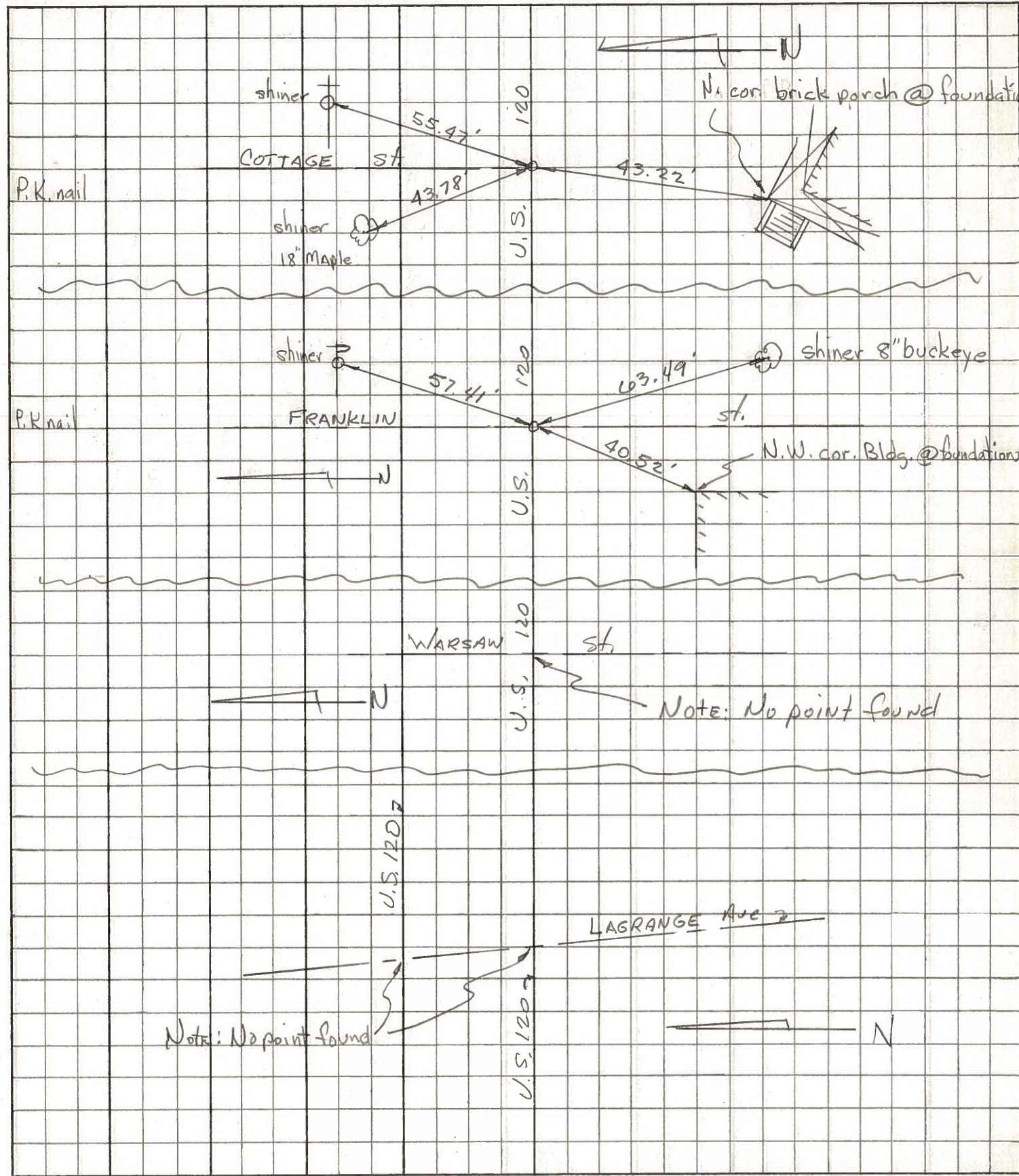
COUNTY Lucas DATE Sept. 15, 1972

S. R. U.S. 120 WEATHER

SEC. Central Ave TEMP.

DESCRIPTION Central ave **TOLEDO** JOB NO.

LEFT CENTER LINE RIGHT



PERSONNEL TITLE PERSONNEL TITLE

COUNTY LUCAS

DATE

Grude

Fox

Neuser

Fox

S. H. SR #20

WEATHER

SEC.

TEMP.

DESCRIPTION

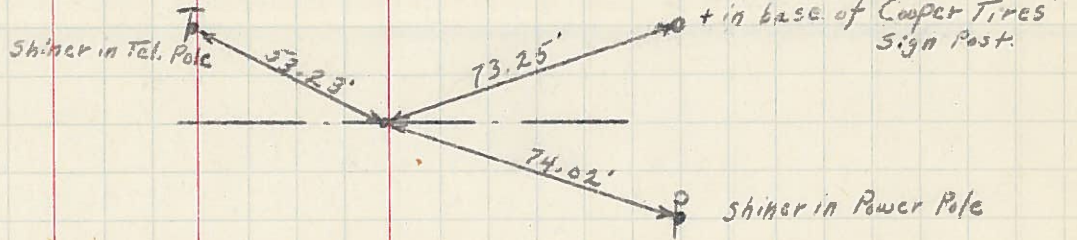
LEFT

CENTER LINE

RIGHT

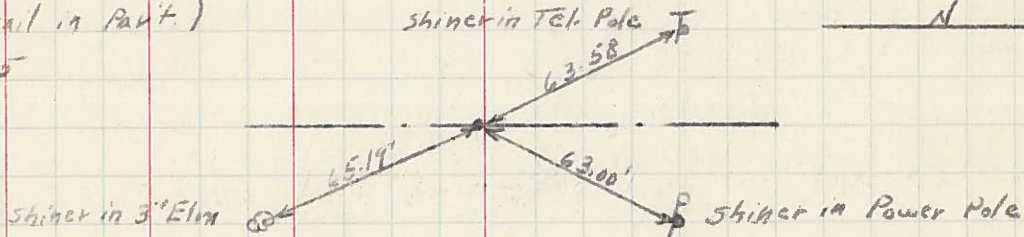
P.C. (Shiner in Part.)

Sta. 901 + 86.15



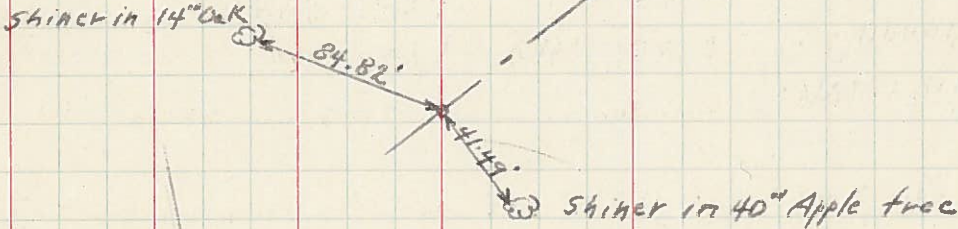
P.I. (P.K. nail in Part.)

Sta. 913 + 37.15



P.T. (Tack in stake)

Sta. 924 + 57.82



P.I. (Brass Plate)

Sta. 932 + 90.38

