

O.D.O.T. DISTRICT 2 SURVEY OFFICE (USE ONLY)

PERSONNEL _____

REFERENCE NO. 37

SHEET 12 OF 19

NOTES TOMSIK

DATE 9/15/72

ROUTE SR 120

H.C. NEUSER

WEATHER _____

COUNTY LUCAS

R.C. VANYO

TEMP. _____

TOWNSHIP CITY OF TOLEDO

GRANATA

SECTION 25

DWG BY NIESE

PID _____

T 9 S R 7 E

TYPE MONUMENT D.N.F.

ON SURFACE - BELOW _____

OFFSET $\text{\textcircled{C}}$ PAVEMENT _____ LT : RT

_____ TO _____ EDGE PAVEMENT

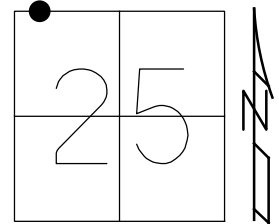
STATION: 928+87

HORZ. DATUM: _____

GEOID: _____

GRID: NORTHING: _____

EASTING: _____

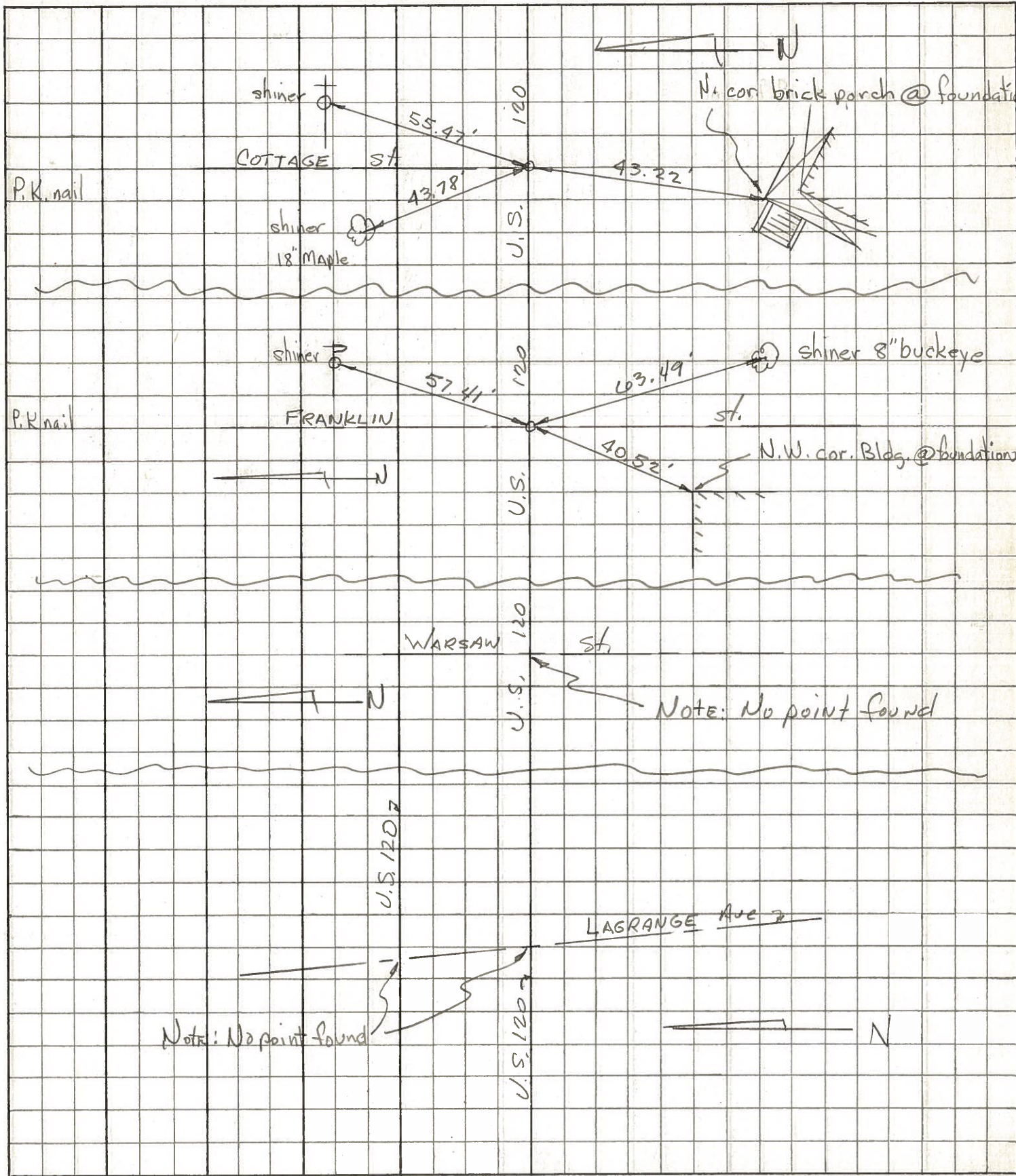


RECORD:
D.N.F.
9/15/72, TOMSIK

$\text{\textcircled{C}}$ SR 120

$\text{\textcircled{C}}$ WARSAW ST

PERSONNEL	TITLE	PERSONNEL	TITLE	COUNTY	DATE
Tomsic				Lucas	Sept. 15, 1972
Neuser				S. R. U.S. 120	WEATHER
Janyo				SEC. Central Ave	TEMP.
Granata				TOLEDO	JOB NO.



PERSONNEL TITLE PERSONNEL TITLE

COUNTY LUCAS

DATE

Grude

Fox

Neuser

Fox

S. H. SR #20

WEATHER

SEC.

TEMP.

DESCRIPTION

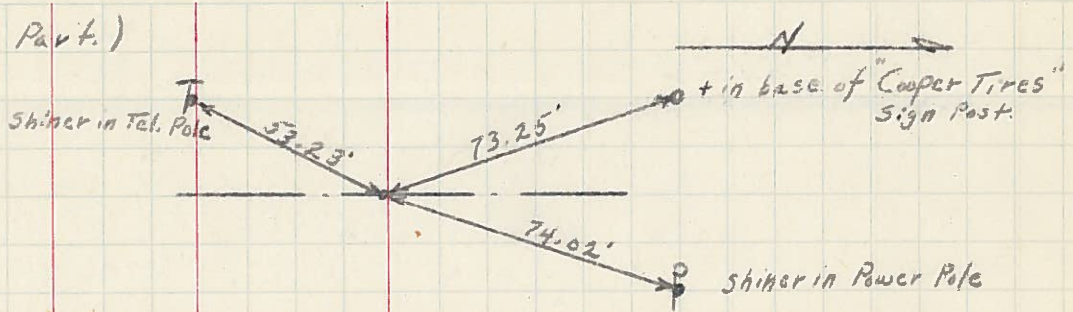
LEFT

CENTER LINE

RIGHT

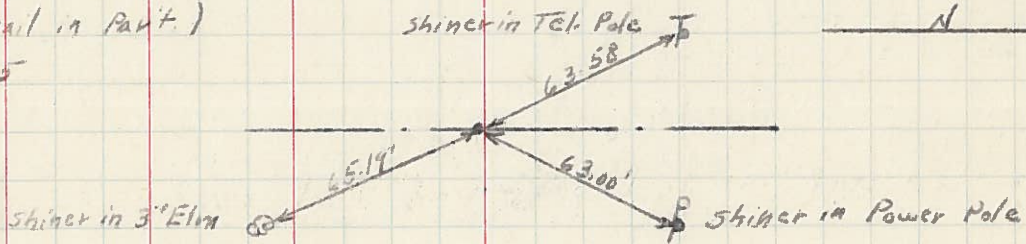
P.C. (Shiner in Part.)

Sta. 901 + 86.15



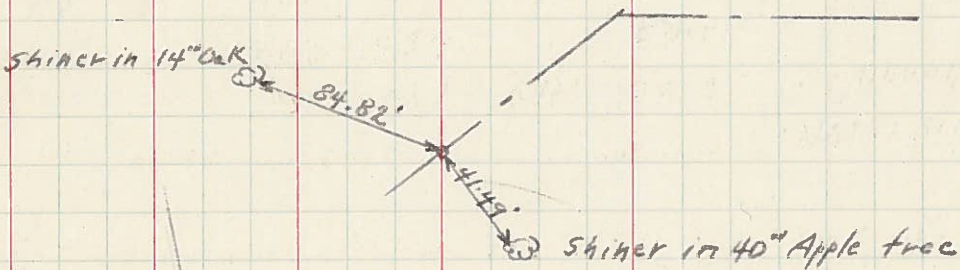
P.I. (P.K. nail in Part.)

Sta. 913 + 37.15



P.T. (Tack in stake)

Sta. 924 + 57.82



P.I. (Brass Plate)

Sta. 932 + 90.38

