

O.D.O.T. DISTRICT 2 SURVEY OFFICE (USE ONLY)

PERSONNEL

REFERENCE NO. 38

SHEET 13 OF 19

NOTES TOMSIK

DATE 9/15/72

ROUTE SR 120

H.C. NEUSER

WEATHER _____

COUNTY LUCAS

R.C. VANYO
GRANATA

TEMP. _____

TOWNSHIP CITY OF TOLEDO

DWG BY NIESE

PID _____

SECTION 25

T 9 S R 7 E

TYPE MONUMENT D.N.F.

ON SURFACE - BELOW _____

OFFSET \odot PAVEMENT _____ LT : RT

_____ TO _____ EDGE PAVEMENT

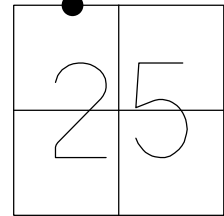
STATION: 925+58

HORZ.DATUM: _____

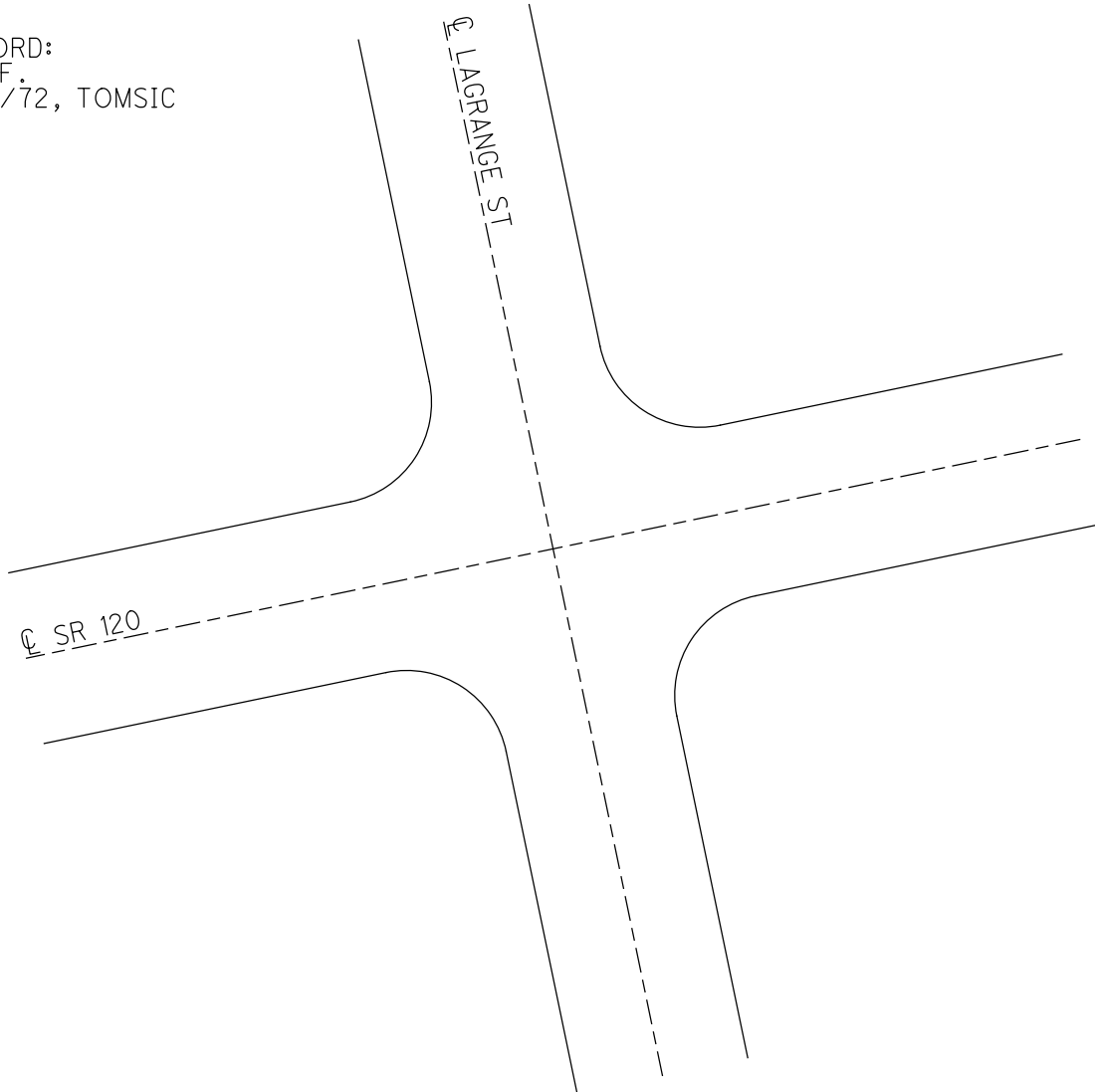
GEOID: _____

GRID: NORTHING: _____

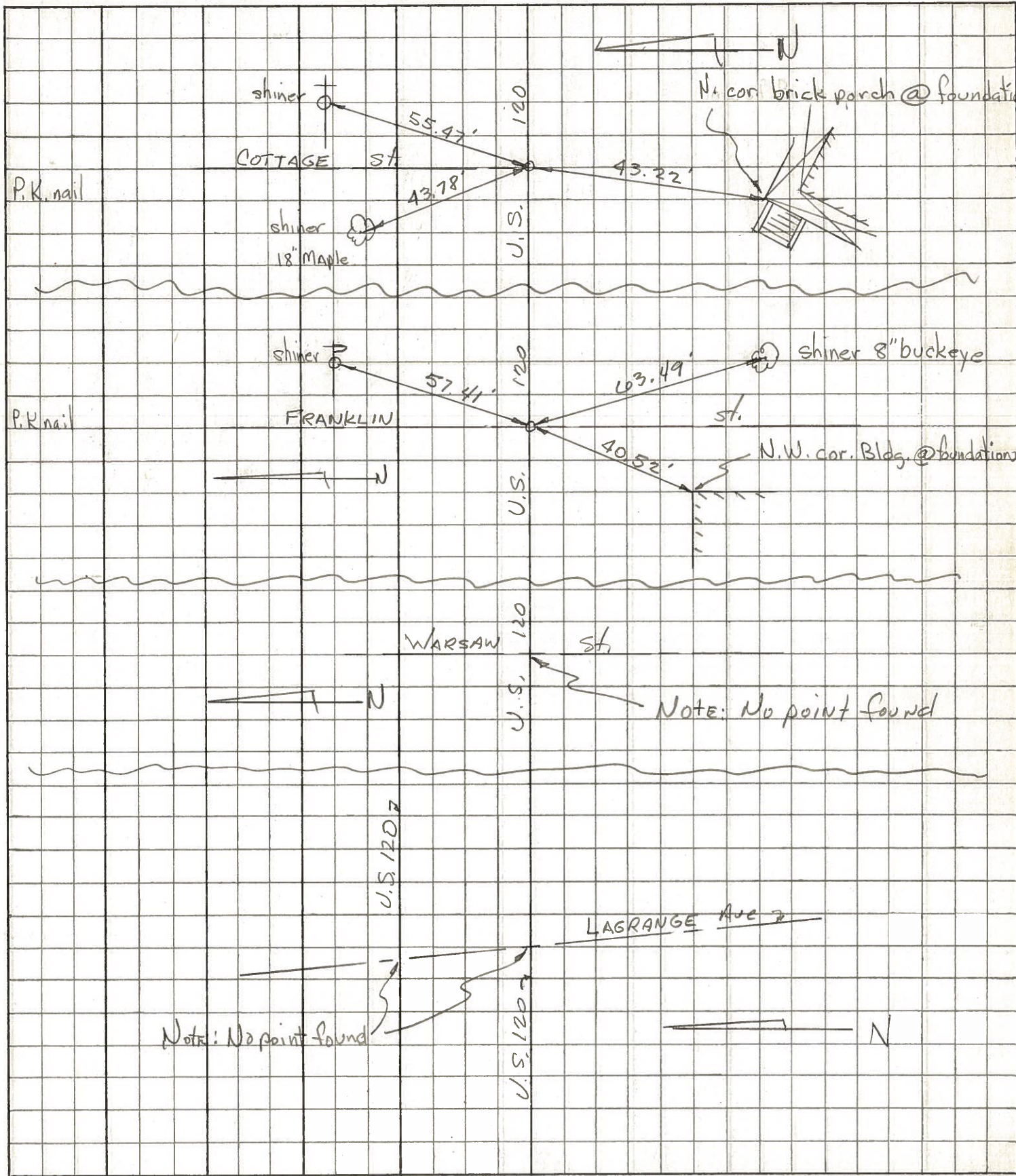
EASTING: _____



RECORD:
D.N.F.
9/15/72, TOMSIK



PERSONNEL	TITLE	PERSONNEL	TITLE	COUNTY	DATE
Tomsic				Lucas	Sept. 15, 1972
Neuser				S. R. U.S. 120	WEATHER
Janyo				SEC. Central Ave	TEMP.
Granata				TOLEDO	JOB NO.



PERSONNEL TITLE PERSONNEL TITLE

COUNTY LUCAS

DATE

Grude

Fox

Neuser

Fox

S. H. SR #20

WEATHER

SEC.

TEMP.

DESCRIPTION

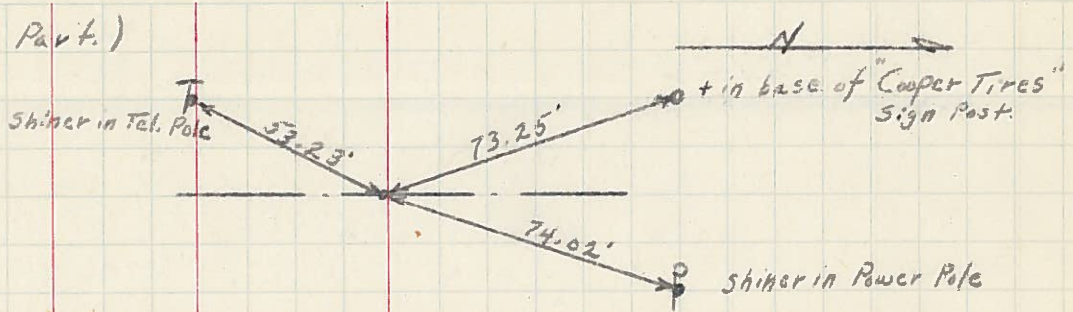
LEFT

CENTER LINE

RIGHT

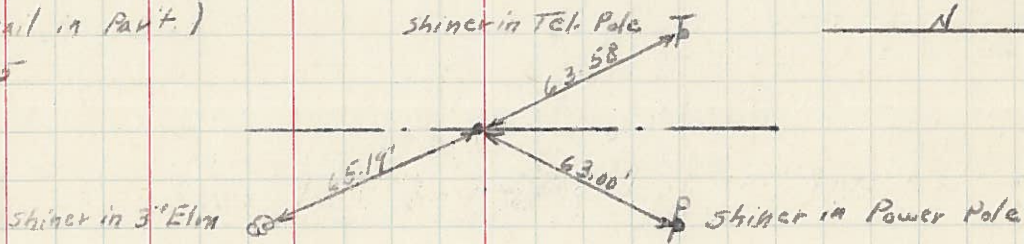
P.C. (Shiner in Part.)

Sta. 901 + 86.15



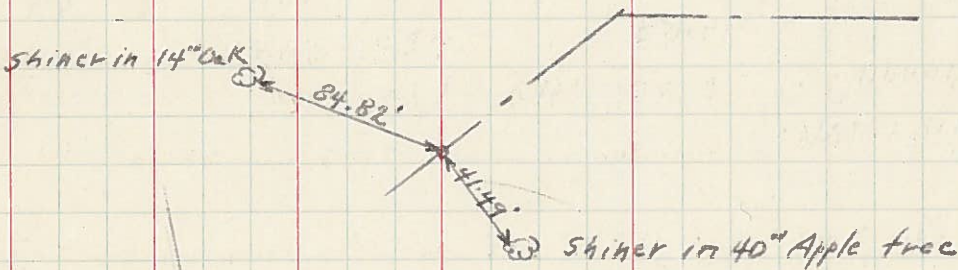
P.I. (P.K. nail in Part.)

Sta. 913 + 37.15



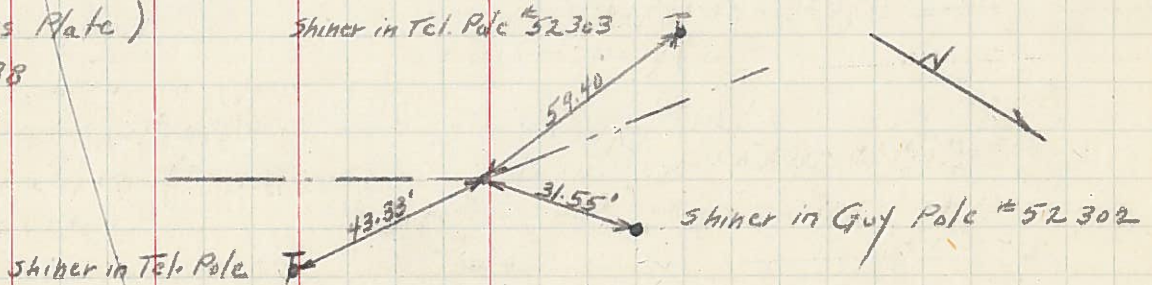
P.T. (Tack in stake)

Sta. 924 + 57.82



P.I. (Brass Plate)

Sta. 932 + 90.38



PERSONNEL TITLE PERSONNEL TITLE

COUNTY Lucas DATE

S. R. #20 (14.97) WEATHER

SEC. (18.53) TEMP.

DESCRIPTION LEFT CENTER LINE RIGHT JOB NO.



Sta. 932+90.38 \perp Survey Ahead
= Sta. 934+43.61 \perp N.B. Const.
Add 194.58' \perp Survey = Sta.
934+84.96 \perp Survey back.

Brass Plate
 $\Delta = 22^{\circ}20'30''$ Rt.

