

O.D.O.T. DISTRICT 2 SURVEY OFFICE (USE ONLY)

PERSONNEL _____

REFERENCE NO. 38 A

SHEET 14 OF 19

NOTES TOMSIC

DATE 9/15/72

ROUTE SR 120

H.C. NEUSER

WEATHER _____

COUNTY LUCAS

R.C. VANYO

TEMP. _____

TOWNSHIP CITY OF TOLEDO

GRANATA

SECTION 24

DWG BY NIESE PID _____

T 9 S R 7 E

TYPE MONUMENT P.K. NAIL

ON SURFACE - BELOW _____

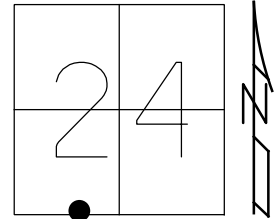
OFFSET \odot PAVEMENT _____ LT : RT

_____ TO _____ EDGE PAVEMENT

STATION: 931+30

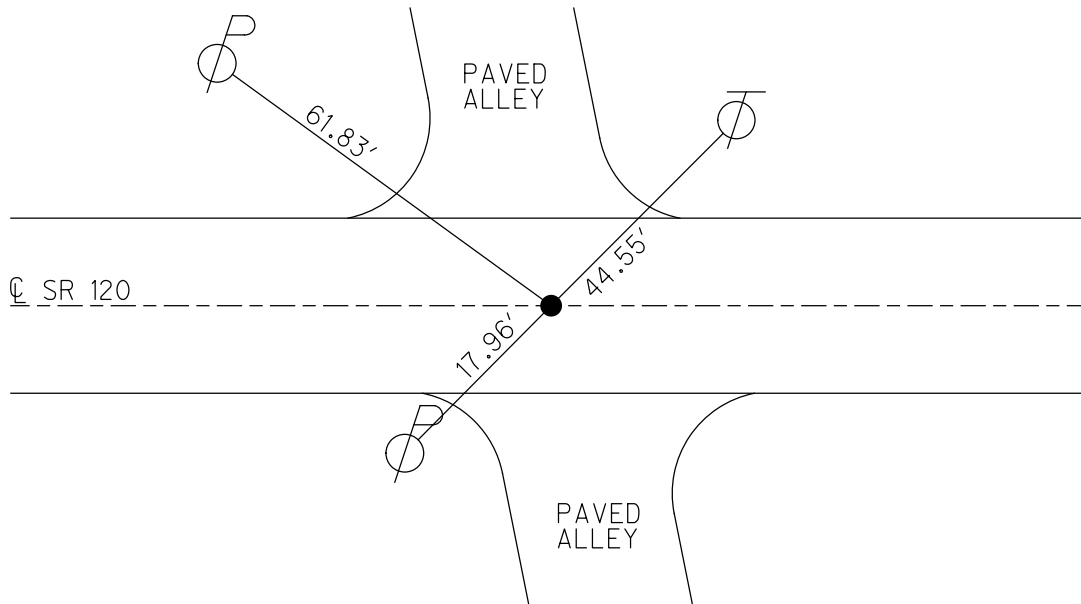
HORZ. DATUM: _____ GEOID: _____

GRID: NORTHING: _____ EASTING: _____



RECORD:
FD P.K. NAIL
9/15/72, TOMSIC

NOTE:
 $\pm 200'$ EAST OF
LAGRANGE ST



PERSONNEL TITLE PERSONNEL TITLE COUNTY Lucas DATE Sept. 15, 1972
 PERSONNEL TITLE PERSONNEL TITLE S. R. U.S. 120 WEATHER
 PERSONNEL TITLE PERSONNEL TITLE SEC. Central Ave TEMP.
 DESCRIPTION Central Ave. **TOLDO** JOB NO.

