

O.D.O.T. DISTRICT 2 SURVEY OFFICE (USE ONLY)

PERSONNEL

REFERENCE NO. 6

SHEET 6 OF 18

NOTES RHOADES DATE 8/9/18
 H.C. O'DONNELL WEATHER SUNNY
 R.C. TRENKA TEMP. 85°F

ROUTE SR 184
 COUNTY LUCAS
 TOWNSHIP SYLVANIA
 SECTION 11

DWG BY NIESE PID 99662

T 9 N R 6 E

TYPE MONUMENT MAG/WASHER

ON SURFACE - ~~BELOW~~ ON

OFFSET CL PAVEMENT 10.0' LT : ~~RT~~

15.9' TO LT EDGE PAVEMENT

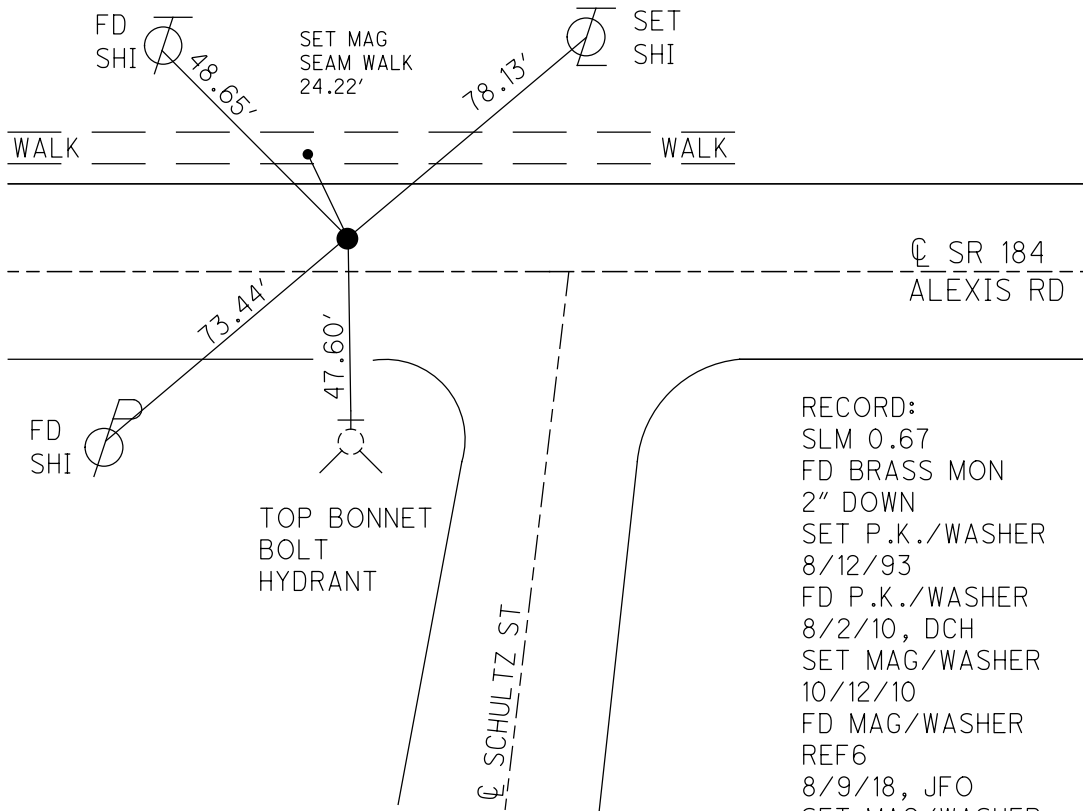
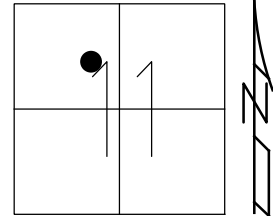
STATION: 24+18.65

HORZ.DATUM: NAD83(2011)

GEOID: 2012A

GRID: NORTHING: 748915.223

EASTING: 1646703.956

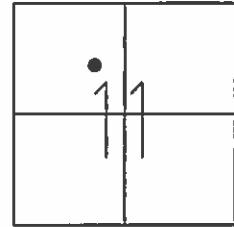


RECORD:
 SLM 0.67
 FD BRASS MON
 2" DOWN
 SET P.K./WASHER
 8/12/93
 FD P.K./WASHER
 8/2/10, DCH
 SET MAG/WASHER
 10/12/10
 FD MAG/WASHER
 REF6
 8/9/18, JFO
 SET MAG/WASHER
 9/17/19, JFO

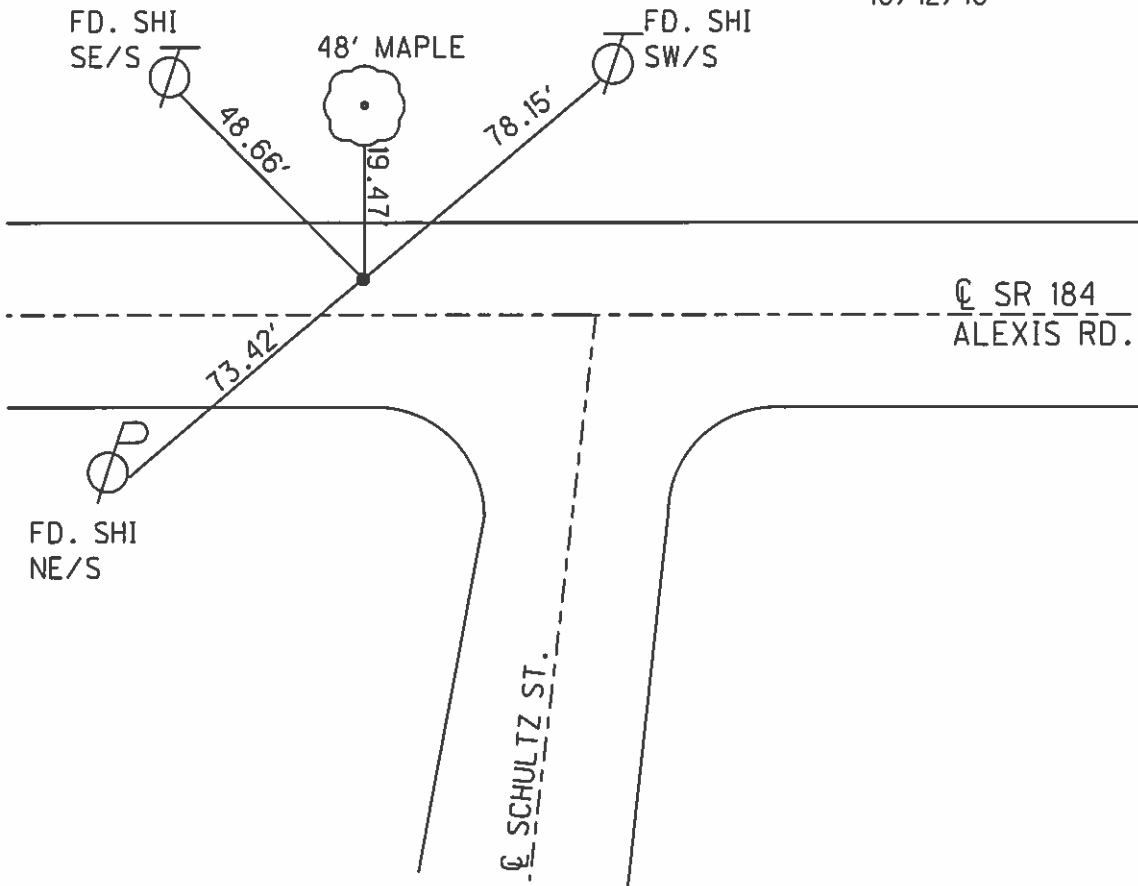
O.D.O.T. DISTRICT 2 SURVEY OFFICE (USE ONLY)

PERSONNEL _____ REFERENCE NO. 6 SHEET 6 OF 18
 NOTES FINTEL DATE 8/2/10 ROUTE SR. 184
 H.C. ROUSOS WEATHER SUNNY COUNTY LUCAS
 R.C. FINTEL TEMP. 85° F TOWNSHIP SYLVANIA
 _____ SECTION 11
 _____ T 9 S R 6 E

TYPE MONUMENT PK/WASHER
 ON SURFACE - ~~BELOW~~ ON
 LEFT - ☉ PAV'T - ~~RIGHT~~ 10.0'
15.9' TO LT. EDGE PAVEMENT
 S.L.M. 35+36
 Grid: Northing: 748915.216 Easting: 1646703.769



RECORD:
 SLM. 0.67
 FD. BRASS MON.
 2" DOWN
 RESET PK/WASHER
 8/12/93
 RESET MAG NAIL/WASHER
 10/12/10



O.D.O.T. DISTRICT 2 SURVEY OFFICE

PERSONNEL

REFERENCE NO. 6

SHEET 5 OF 20

NOTES LOEHMKE

H.C. CORDES

R.C. ROMERO

CANTERBURY

DATE 7-20-93

WEATHER CLEAR

TEMP. +80

ROUTE S.R. 184

COUNTY LUCAS

TOWNSHIP _____

SECTION _____

T _____ R _____

Set P.K. / WASHER
8-12-93

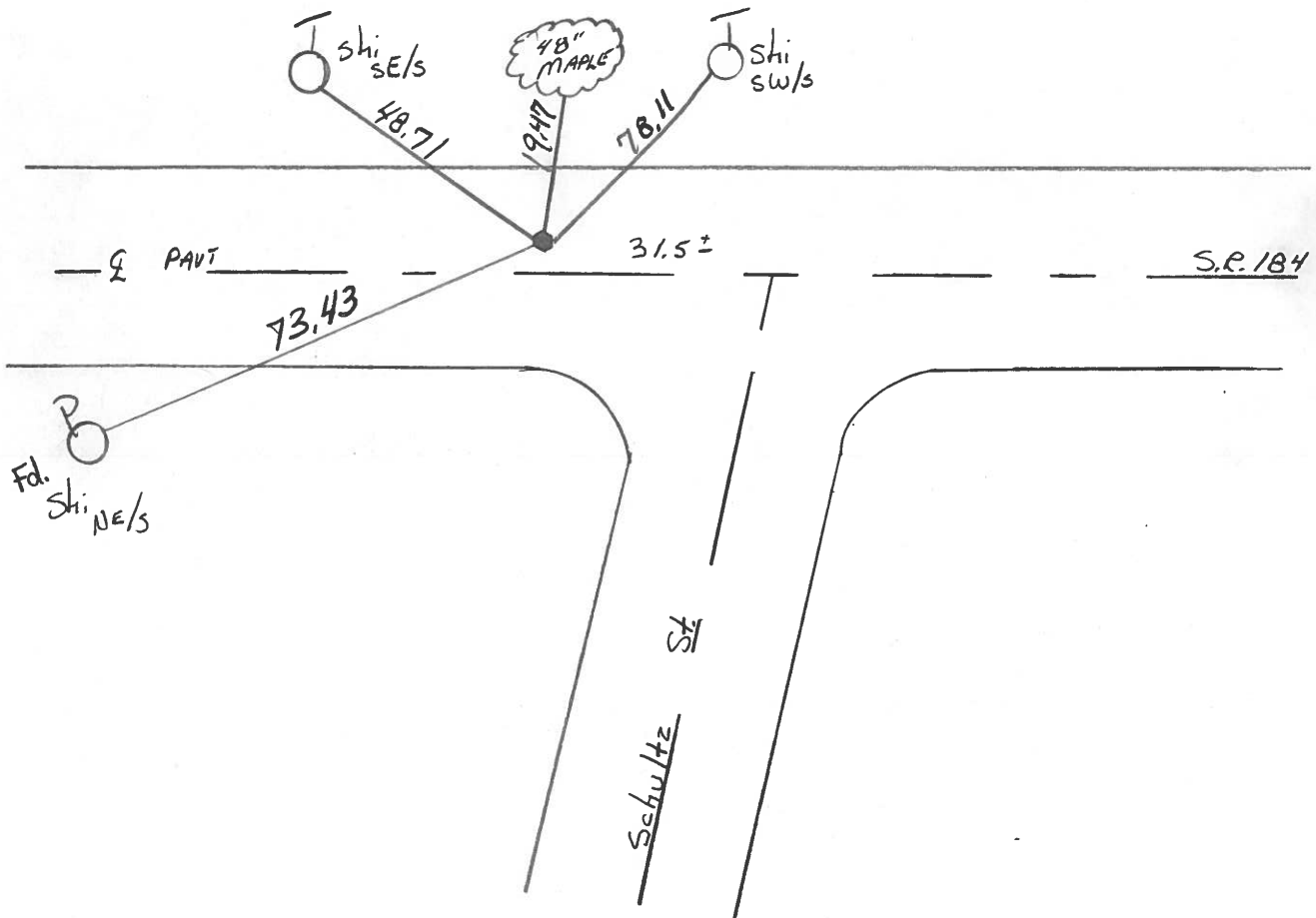
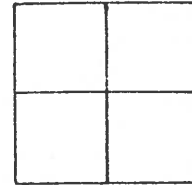
TYPE MONUMENT BRASS Mon

ON SURFACE - BELOW 2"

LEFT-☉ PAV'T. - RIGHT 10.0'

15.9 TO L EDGE PAVEMENT

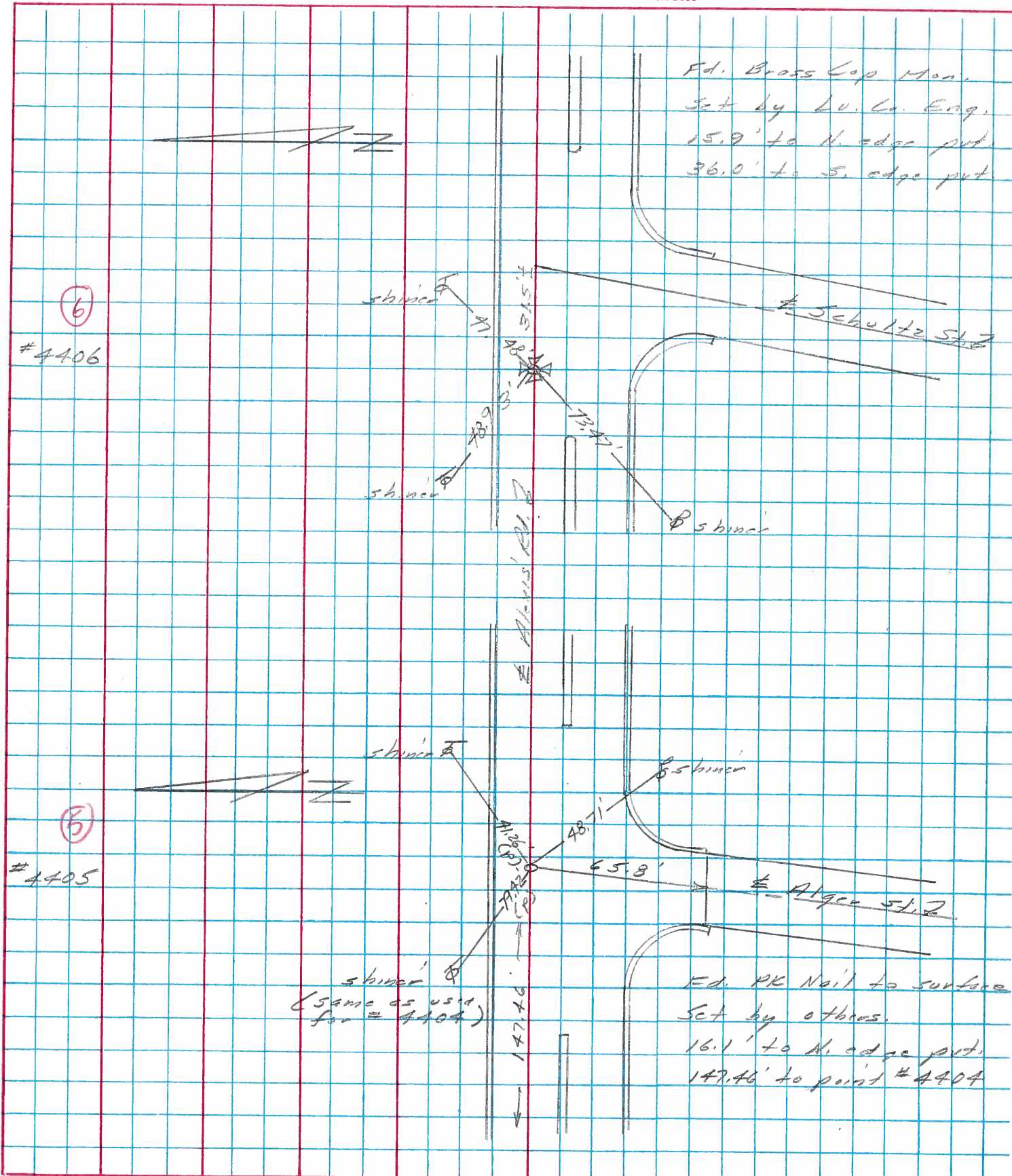
S.L.M. 35 + 36



PERSONNEL	TITLE	PERSONNEL	TITLE
Stone			
Michalak			
Curtis			

COUNTY Lucas DATE 19 Feb. 76
 S. R. 184 WEATHER Cloudy
 SEC. 0100 TEMP. 35°

DESCRIPTION References to Control Points JOB NO. _____
 LEFT CENTER LINE RIGHT



PERSONNEL	TITLE	PERSONNEL	TITLE	COUNTY	DATE
Stone	Notes			Lucas	18 June 68
Beck	Flag			S. R. 27.25- Bypass	WEATHER Fair
Michalak	Tape			SEC. Alexis Rd.	TEMP. 60°
Schroeder	Tape				

DESCRIPTION References to Control Points JOB NO. _____

