

O.D.O.T. DISTRICT 2 SURVEY OFFICE (USE ONLY)

PERSONNEL

REFERENCE NO. 8

SHEET 8 OF 18

NOTES RHOADES

DATE 8/9/18

ROUTE SR 184

H.C. O'DONNELL

WEATHER SUNNY

COUNTY LUCAS

R.C. TRENKA

TEMP. 74°

TOWNSHIP SYLVANIA

SECTION 11

DWG BY NIESE

PID 99662

T 9 N R 6 E

TYPE MONUMENT MAG/WASHER

ON SURFACE - ~~BELOW~~ ON _____

OFFSET \bar{C} PAVEMENT 10.0' LT : ~~RT~~
16.1' TO LT EDGE PAVEMENT

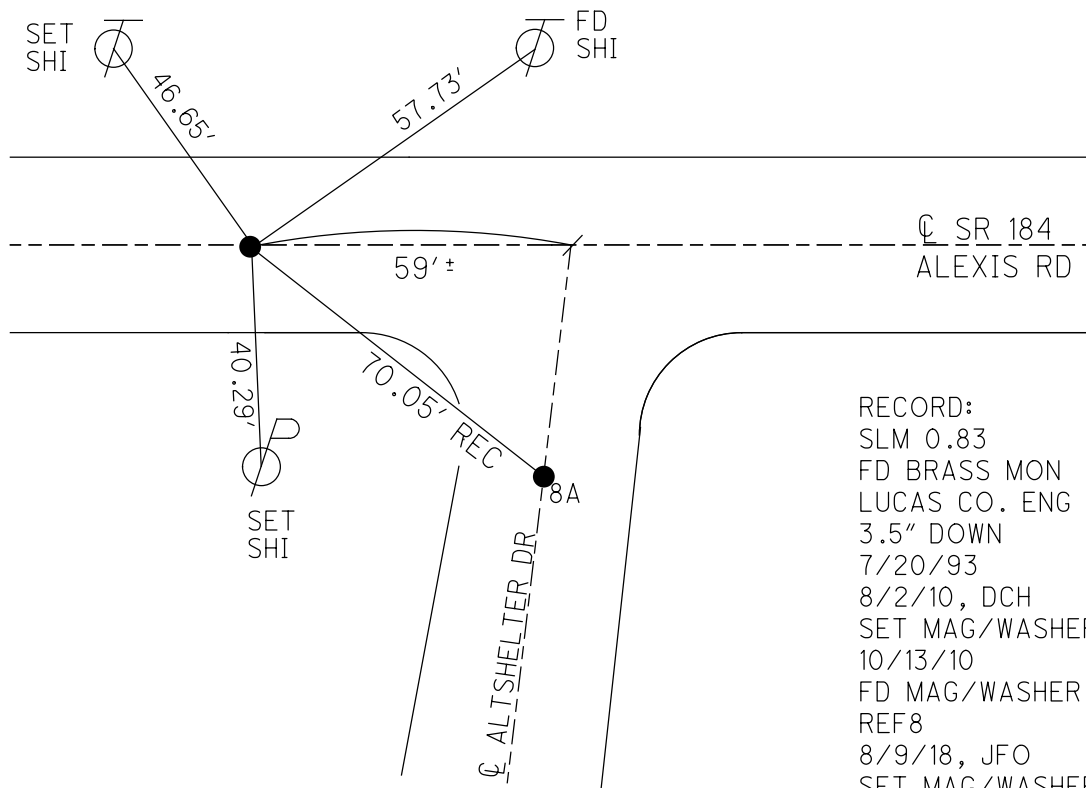
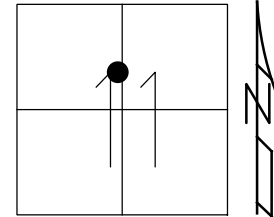
STATION: 32+74.26

HORZ.DATUM: NAD83(2011)

GEOID: 2012A

GRID: NORTHING: 749042.649

EASTING: 1647550.044

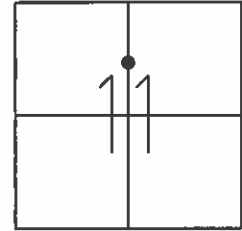


RECORD:
 SLM 0.83
 FD BRASS MON
 LUCAS CO. ENG
 3.5" DOWN
 7/20/93
 8/2/10, DCH
 SET MAG/WASHER
 10/13/10
 FD MAG/WASHER
 REF8
 8/9/18, JFO
 SET MAG/WASHER
 9/17/19, JFO

O.D.O.T. DISTRICT 2 SURVEY OFFICE (USE ONLY)

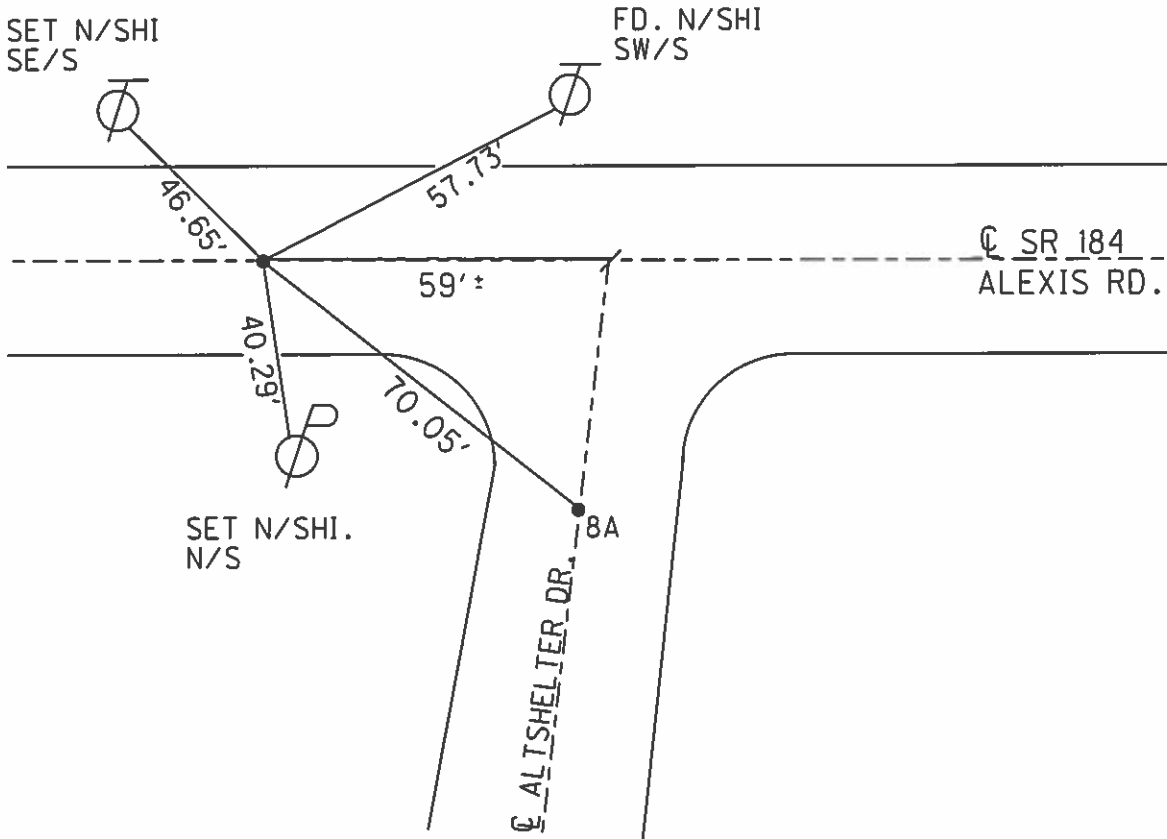
PERSONNEL _____	REFERENCE NO. <u>8</u>	SHEET <u>8</u> OF <u>18</u>
NOTES <u>FINTEL</u>	DATE <u>8/2/10</u>	ROUTE <u>SR. 184</u>
H.C. <u>ROUSOS</u>	WEATHER <u>SUNNY</u>	COUNTY <u>LUCAS</u>
R.C. <u>FINTEL</u>	TEMP. <u>87° F</u>	TOWNSHIP <u>SYLVANIA</u>
_____	_____	SECTION <u>11</u>
_____	_____	T <u>9</u> S R <u>6</u> E

TYPE MONUMENT MON. LUCAS CO. ENG.
~~ON SURFACE~~ - BELOW 3.5"
~~LEFT~~ - Q PAV'T - ~~RIGHT~~ 10.0'
16.1' TO LT. EDGE ~~PAVEMENT~~ CURB
 S.L.M. 43+93



Grid: Northing: 749042.580 Easting: 1647549.908

RECORD:
 SLM. 0.83
 BRASS MON-
 LUCAS CO. ENG.
 3.5" DOWN
 7/20/93
 SET MAG NAIL/WASHER
 10/13/10



O.D.O.T. DISTRICT 2 SURVEY OFFICE

PERSONNEL _____

REFERENCE NO. 8

SHEET 7 OF 20

NOTES LOEHRKE

H.C. CORDES

R.C. ROMETO

CANTERBURY

DATE 7-20-93

WEATHER CLEAR

TEMP. +80

ROUTE S. R. 184

COUNTY LUCAS

TOWNSHIP _____

SECTION _____

T. _____ R. _____

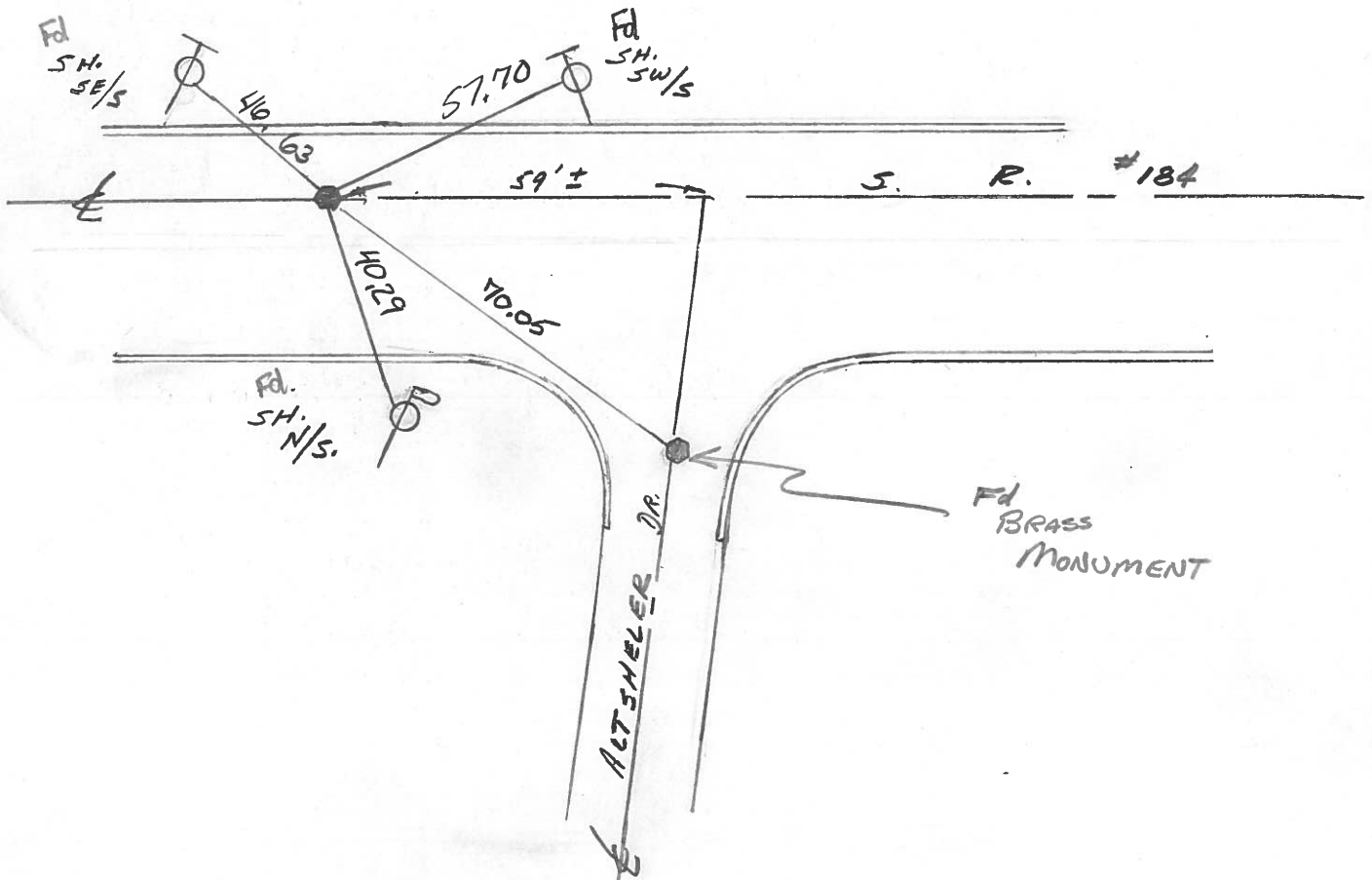
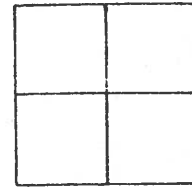
TYPE MONUMENT BRASS Mon - Lucas Co. Eng.

ON SURFACE - BELOW 3 1/2

LEFT- & PAW'T. - RIGHT 10.0'

161 TO 17 EDGE PAVEMENT CURB

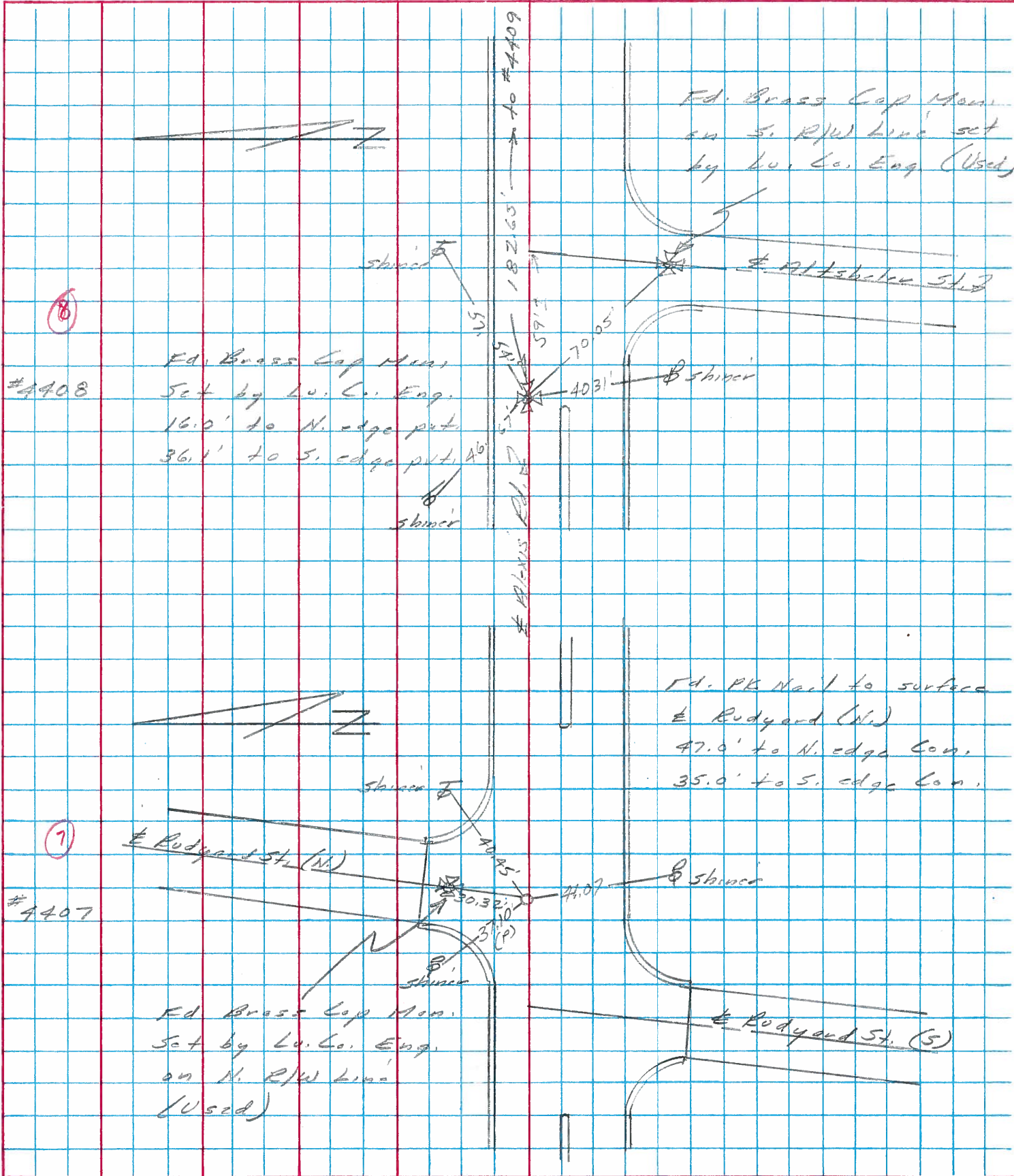
S.L.M. 43 + 93



PERSONNEL TITLE PERSONNEL TITLE
 Stone _____
 Michalak _____
 Curtis _____

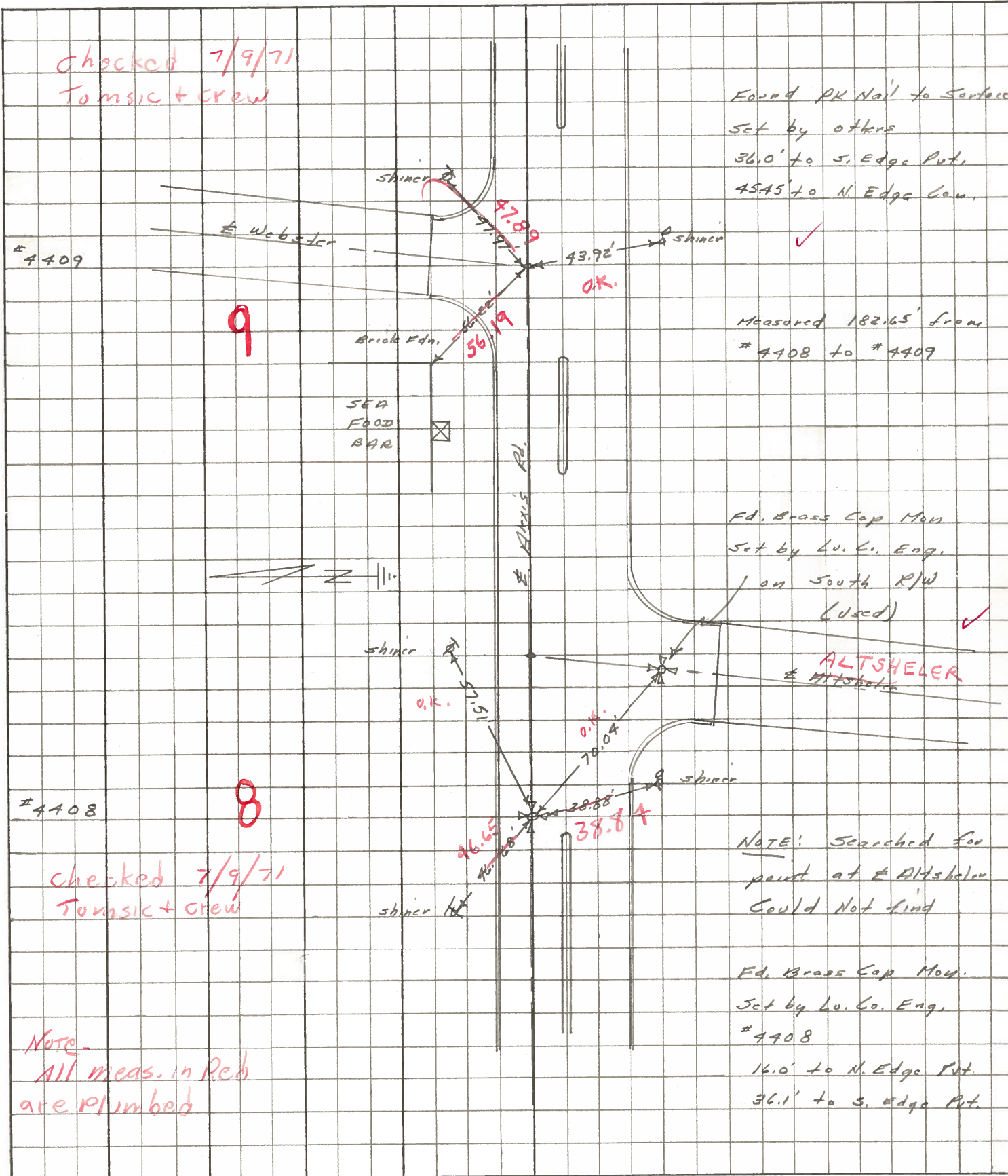
COUNTY Lucas DATE 19 Feb. 76
 S. R. #184 WEATHER Cloudy
 SEC. 0.00 TEMP. 36°

DESCRIPTION References to Control Points JOB NO.
 LEFT CENTER LINE RIGHT



PERSONNEL	TITLE	PERSONNEL	TITLE	COUNTY	DATE	WEATHER	TEMP.
Stone	Notes			Lucas	18 June 68	Fair	74°
Beck	Flag			S. R. 24-25 Bypass			
Michalak	Tape			SEC. Alexis Rd.			
Schroder	Tape						

DESCRIPTION References to Control Points JOB NO. _____



Checked 7/9/71
Tomsic + crew

Found PK Nail to Surface
Set by others
36.0' to S. Edge Pnt.
4545' to N. Edge Com.

4409

9

Measured 182.65' from
4408 to # 4409

SEA
FOOD
BAR

Fd. Brass Cap Mon
Set by Lu. Co. Eng.
on South R/W
(Used)

ALTSHELER
E Altsheler

4408

8

Checked 7/9/71
Tomsic + crew

NOTE: Searched for
point at E Altsheler
Could Not find

Fd. Brass Cap Mon.
Set by Lu. Co. Eng.
4408
16.0' to N. Edge Pnt.
36.1' to S. Edge Pnt.

Note -
All meas. in Red
are Plumbod