

O.D.O.T. DISTRICT 2 SURVEY OFFICE (USE ONLY)

PERSONNEL _____ REFERENCE NO. 11 SHEET 12 OF 18
 NOTES RHOADES DATE 8/9/18 ROUTE SR 184
 H.C. O'DONNELL WEATHER SUNNY COUNTY LUCAS
 R.C. TRENKA TEMP. 74° TOWNSHIP SYLVANIA
 DWG BY NIESE PID 99662 SECTION 11
 T 9 N R 6 E

TYPE MONUMENT MAG/WASHER

ON SURFACE - ~~BELOW~~ ON

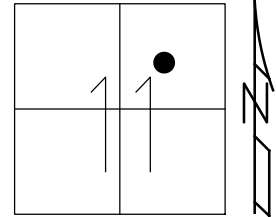
OFFSET 10.0' LT : ~~RT~~

16.1' TO LT EDGE ~~PAVEMENT~~ CURB

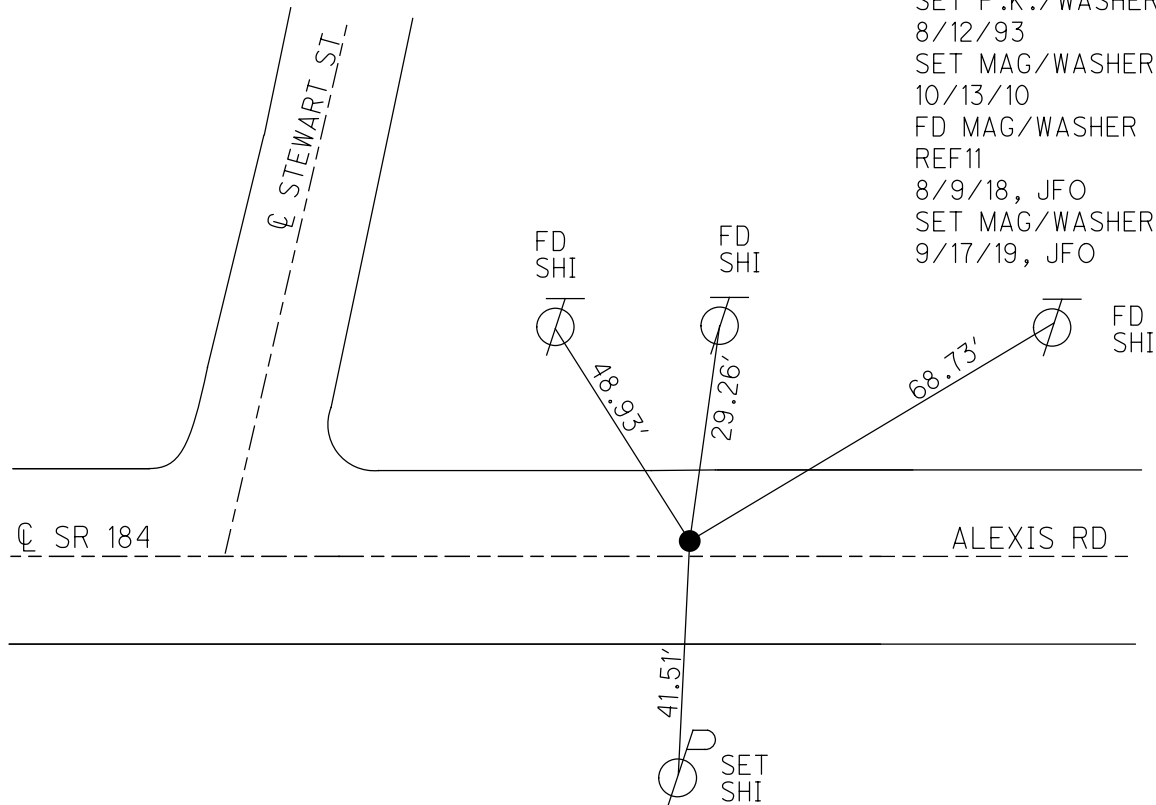
STATION: 48+60.20

HORIZ.DATUM: NAD83(2011) GEOID: 2012A

GRID: NORTHING: 749283.656 EASTING: 1649117.570



RECORD:
 SLM 1.10
 FD BRASS MON
 LUCAS CO. ENGINEER
 7/19/93
 FD 1 1/2" DOWN
 8/2/10, DCH
 SET P.K./WASHER
 8/12/93
 SET MAG/WASHER
 10/13/10
 FD MAG/WASHER
 REF11
 8/9/18, JFO
 SET MAG/WASHER
 9/17/19, JFO



O.D.O.T. DISTRICT 2 SURVEY OFFICE (USE ONLY)

| | | |
|---------------------|-------------------------|------------------------------|
| PERSONNEL | REFERENCE NO. <u>11</u> | SHEET <u>12</u> OF <u>18</u> |
| NOTES <u>FINTEL</u> | DATE <u>8/2/10</u> | ROUTE <u>SR. 184</u> |
| H.C. <u>ROUSOS</u> | WEATHER <u>SUNNY</u> | COUNTY <u>LUCAS</u> |
| R.C. <u>FINTEL</u> | TEMP. <u>88°F</u> | TOWNSHIP <u>SYLVANIA</u> |
| | | SECTION <u>11</u> |
| | | T <u>9</u> S R <u>6</u> E |

TYPE MONUMENT BRASS MON. LUCAS CO. ENG.

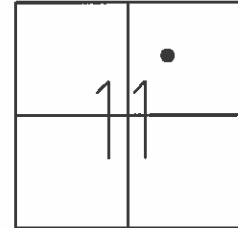
~~ON SURFACE~~ - BELOW 1.5"

LEFT - Q PAV'T - ~~RIGHT~~ 10.0'

16.1' TO LT. EDGE ~~PAVEMENT~~ CURB

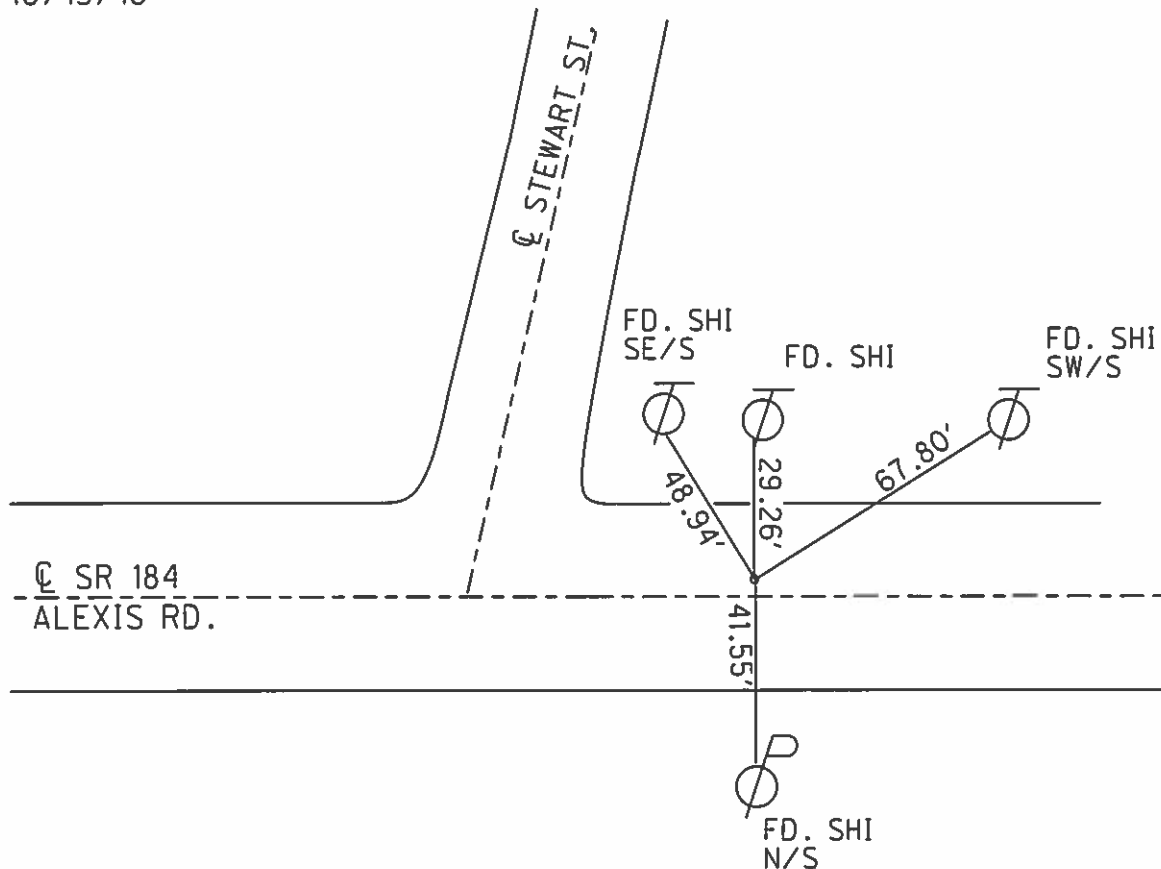
S.L.M. 59+78

Grid: Northing: 749283.687 Easting: 1649118.509



RECORD:

SLM 1.10
 FD. BRASS MONUMENT
 LUCAS CO. ENGINEER
 7/19/93
 SET PK/WASHER
 8/12/93
 SET MAG NAIL/WASHER
 10/13/10



O.D.O.T. DISTRICT 2 SURVEY OFFICE

PERSONNEL _____

REFERENCE NO. 11

SHEET 10 OF 20

NOTES LOEHRKE

H.C. CORDES

R.C. ROMETO

CANTERBURY

DATE 7-19-93

WEATHER Pt Cloudy

TEMP. +80

ROUTE S.R. # 184

COUNTY LUCAS

TOWNSHIP _____

SECTION _____

T _____ R _____

Set P.K./WASHER
8-12-93

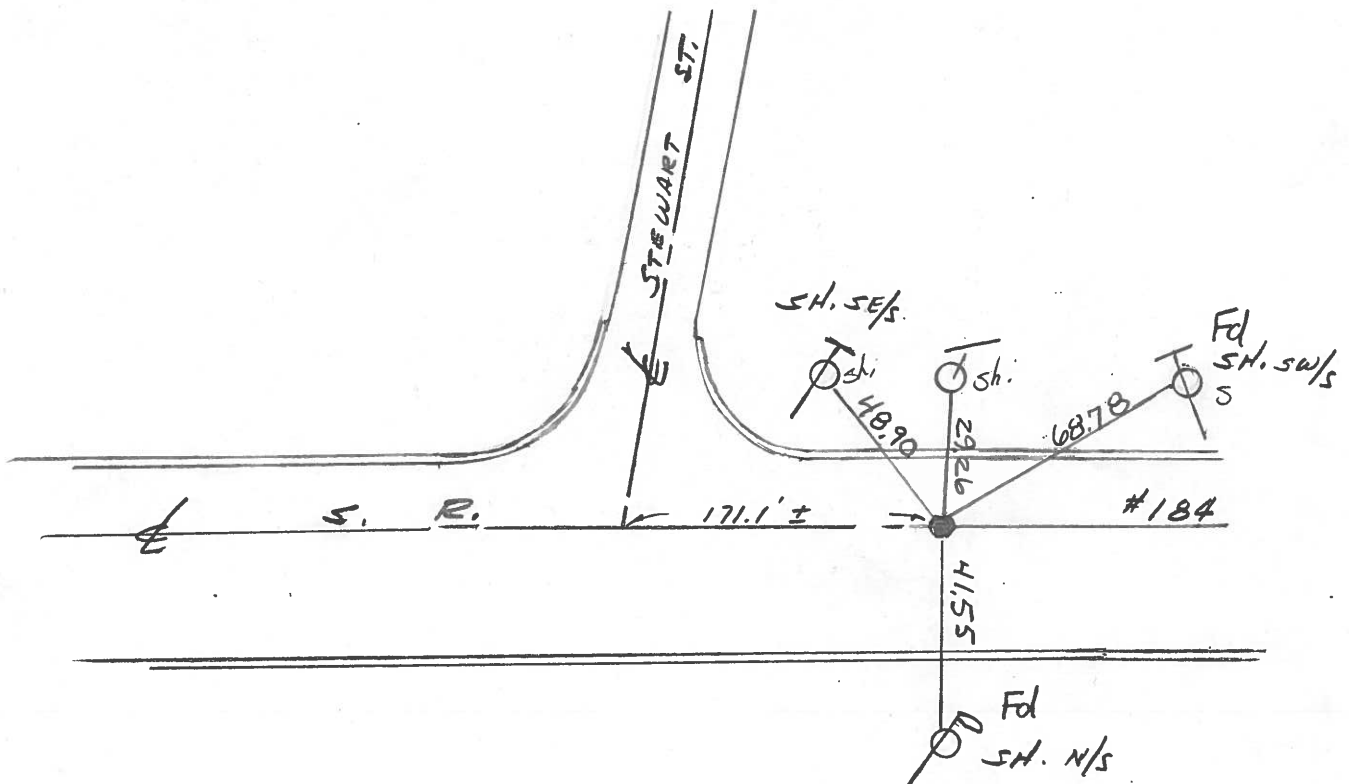
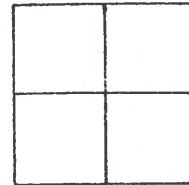
TYPE MONUMENT BRASS MON. Lucas Co. Eng.

~~ON SURFACE~~ - BELOW 1 1/2"

LEFT - & PAV'T. - RIGHT 10.0'

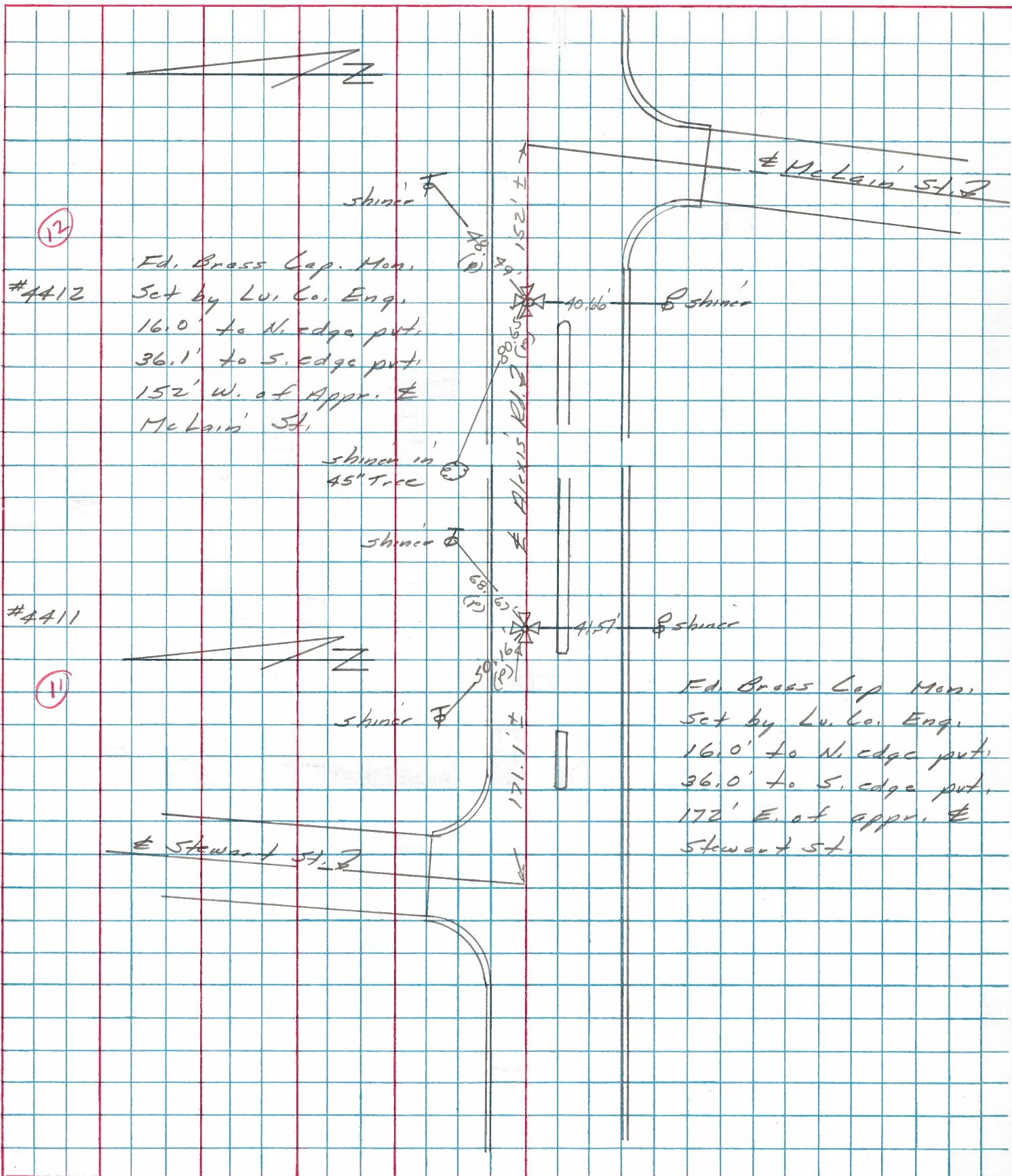
10.1 JOINT ~~EDGE PAVEMENT CURB~~

S.L.M. 59+78



PERSONNEL TITLE PERSONNEL TITLE COUNTY Lucas DATE 19 Feb. 76
 Stone
 Michalak
 Curtis
 S. R. # 184 WEATHER Cloudy
 SEC. 0.00 TEMP. 34°

DESCRIPTION References to Control Points JOB NO.
 LEFT CENTER LINE RIGHT



(12)

#4412

Ed. Brass Cap Mon.
 Set by Lu. Co. Eng.
 16.0' to N. edge pt.
 36.1' to S. edge pt.
 152' W. of Appr. to
 McLain St.

skinner in 45' tree

#4411

(11)

skinner

Ed. Brass Cap Mon.
 Set by Lu. Co. Eng.
 16.0' to N. edge pt.
 36.0' to S. edge pt.
 172' E. of appr. to
 Stewart St.

| PERSONNEL | TITLE | PERSONNEL | TITLE | COUNTY | DATE |
|-----------|-------|-----------|-------|--------------------|--------------|
| Stone | Notes | | | Lucas | 28 June 68 |
| Beck | Flag | | | S. R. 27-25 Bypass | WEATHER Damp |
| Michalak | Tape | | | SEC. Alexis Rd. | TEMP. 59° |
| Schroder | Tape | | | | |

DESCRIPTION References to Control Points JOB NO. _____

