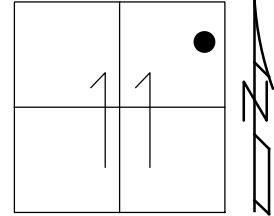


O.D.O.T. DISTRICT 2 SURVEY OFFICE (USE ONLY)

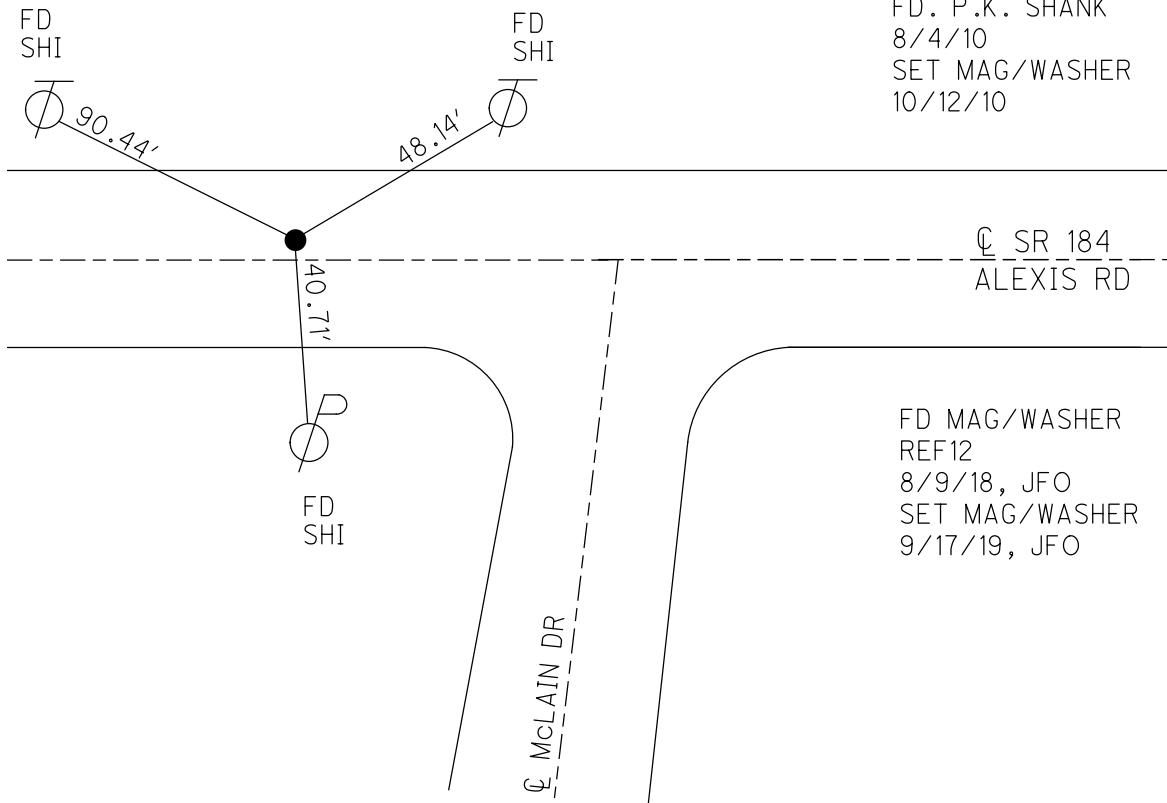
PERSONNEL _____ REFERENCE NO. 12 SHEET 13 OF 18
 NOTES RHOADES DATE 8/4/10 ROUTE SR 184
 H.C. O'DONNELL WEATHER SUNNY COUNTY LUCAS
 R.C. TRENKA TEMP. 74° TOWNSHIP SYLVANIA
 DWG BY NIESE PID 99662 SECTION 11
 T 9 N R 6 E

TYPE MONUMENT MAG/WASHER
 ON SURFACE - ~~BELOW~~ ON _____
 OFFSET ϕ PAVEMENT 10.4' LT : ~~RT~~
16.1' TO LT EDGE PAVEMENT
 STATION: 53+68.93



HORZ. DATUM: NAD83(2011) GEOID: 2012A
 GRID: NORTHING: 749360.210 EASTING: 1649620.527

RECORD:
 SLM 1.27
 FD. BRASS MON
 1.5" DOWN
 7/19/93
 8/4/10, DCH
 SET P.K./WASHER
 8/11/93
 FD. P.K. SHANK
 8/4/10
 SET MAG/WASHER
 10/12/10

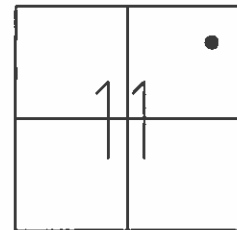


FD MAG/WASHER
 REF12
 8/9/18, JFO
 SET MAG/WASHER
 9/17/19, JFO

O.D.O.T. DISTRICT 2 SURVEY OFFICE (USE ONLY)

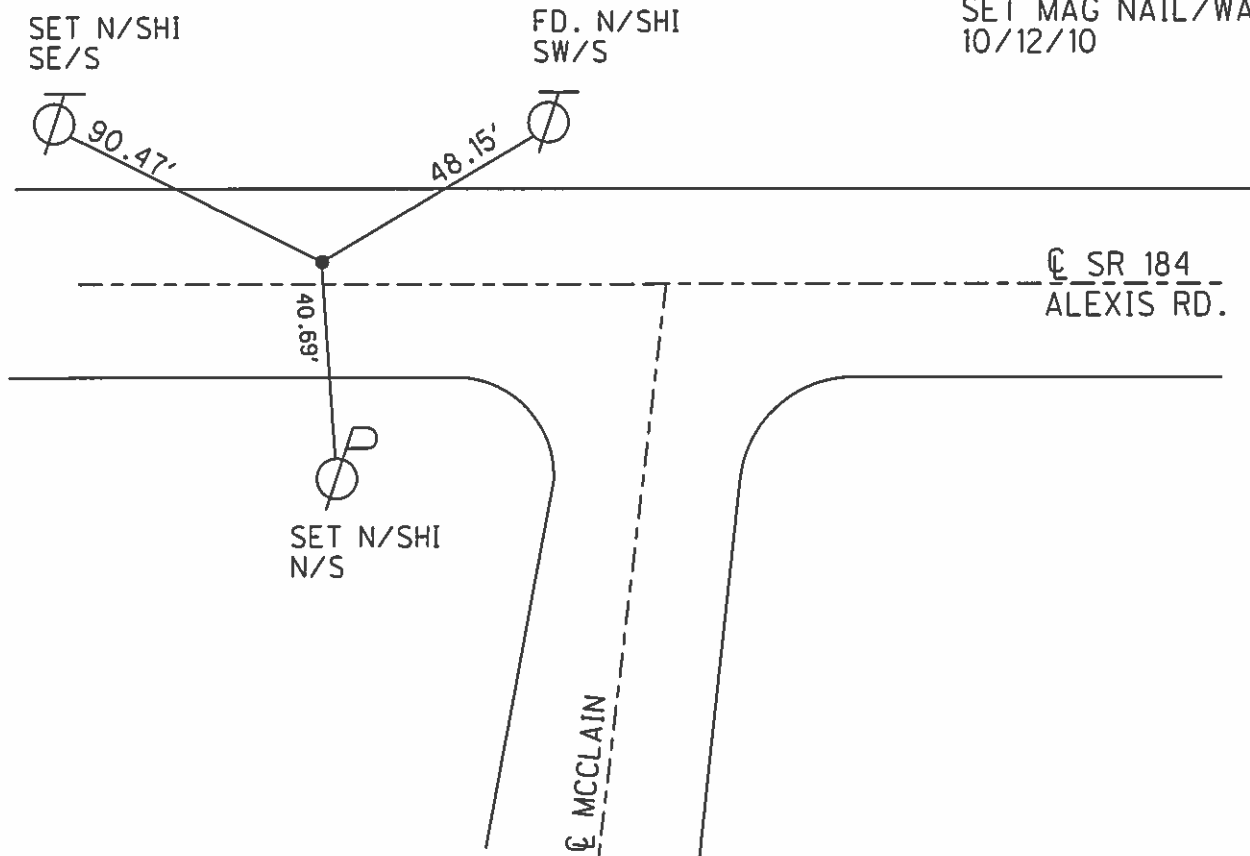
PERSONNEL	REFERENCE NO. <u>12</u>	SHEET <u>13</u> OF <u>18</u>
NOTES <u>HOMAN</u>	DATE <u>8/4/10</u>	ROUTE <u>SR. 184</u>
H.C. <u>ROUSOS</u>	WEATHER <u>SUNNY</u>	COUNTY <u>LUCAS</u>
R.C. <u>FINTEL</u>	TEMP. <u>80° F</u>	TOWNSHIP <u>SYLVANIA</u>
		SECTION <u>11</u>
		T <u>9</u> S R <u>6</u> E

TYPE MONUMENT BRASS MONUMENT
~~ON SURFACE~~ - BELOW 1.5"
 LEFT - ☉ PAV'T - ~~RIGHT~~ 10.4'
16.1 TO LT. ~~EDGE PAVEMENT~~ CURB
 S.L.M. 64+87



Grid: Northing: 749360.135 Easting: 1649620.367

RECORD:
 SLM. 1.27
 FD. BRASS MON
 1.5" DOWN
 7/19/93
 SET PK/WASHER
 8/11/93
 FD. PK SHANK
 8/4/10
 SET MAG NAIL/WASHER
 10/12/10



O.D.O.T. DISTRICT 2 SURVEY OFFICE

PERSONNEL _____

REFERENCE NO. 12

SHEET 11 OF 20

NOTES LOEHRKE

H.C. CORDES

R.C. ROMETO

CANTERBURY

DATE 7-19-93

WEATHER CLOUDY

TEMP. +85

Set P.K./WASHER
8-11-93

ROUTE S.R. #184

COUNTY LUCAS

TOWNSHIP _____

SECTION _____

T _____ R _____

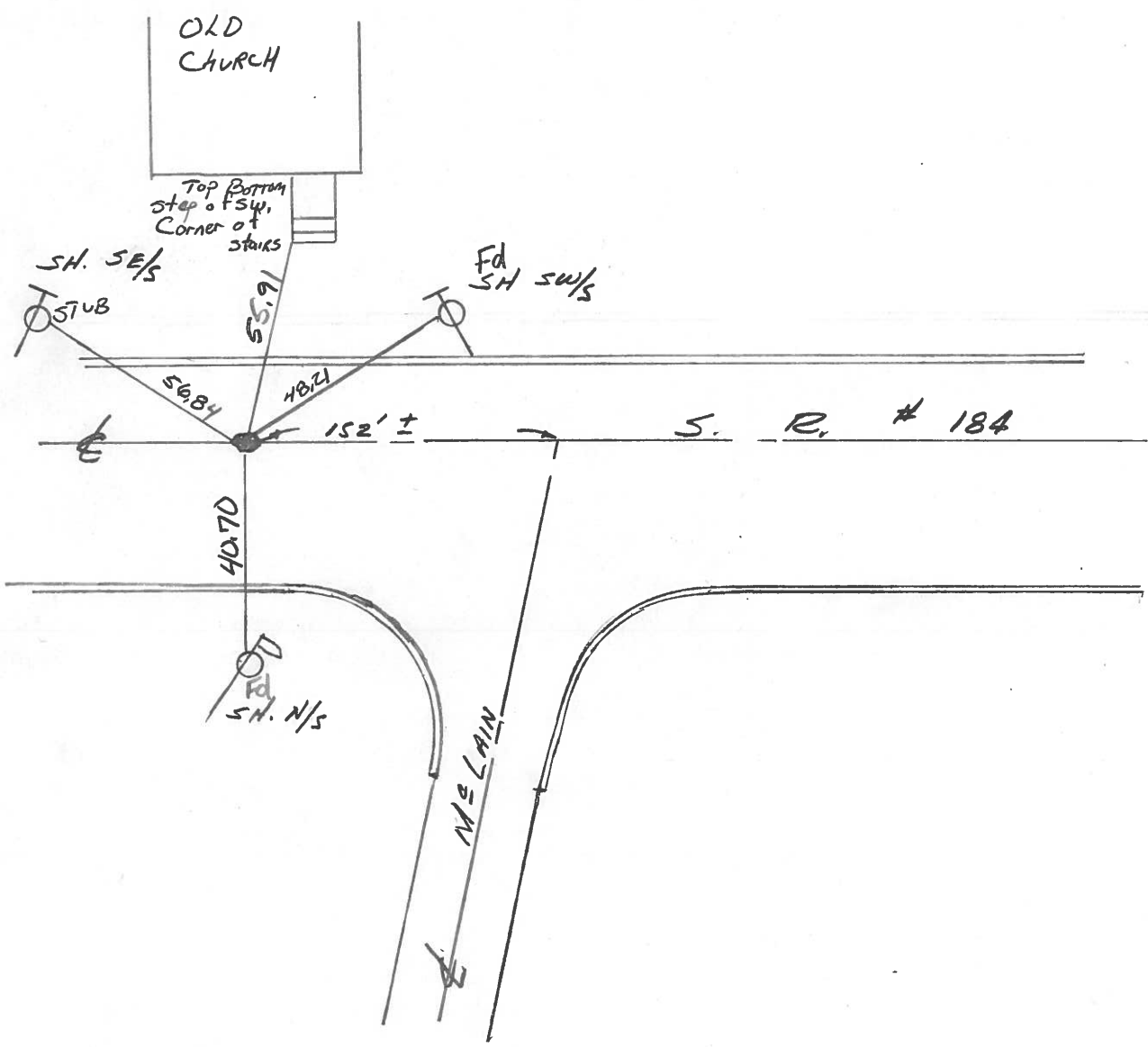
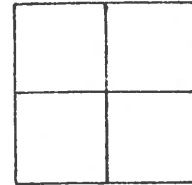
TYPE MONUMENT BRASS MON

ON SURFACE - BELOW 1 1/2

LEFT- & PAV'T. - RIGHT 10.4

161 TO EDGE PAVEMENT & CURB

S.L.M. 64+87



PERSONNEL TITLE PERSONNEL TITLE

Stone
Michalak
Curtis

COUNTY Lucas DATE 19 Feb. 76

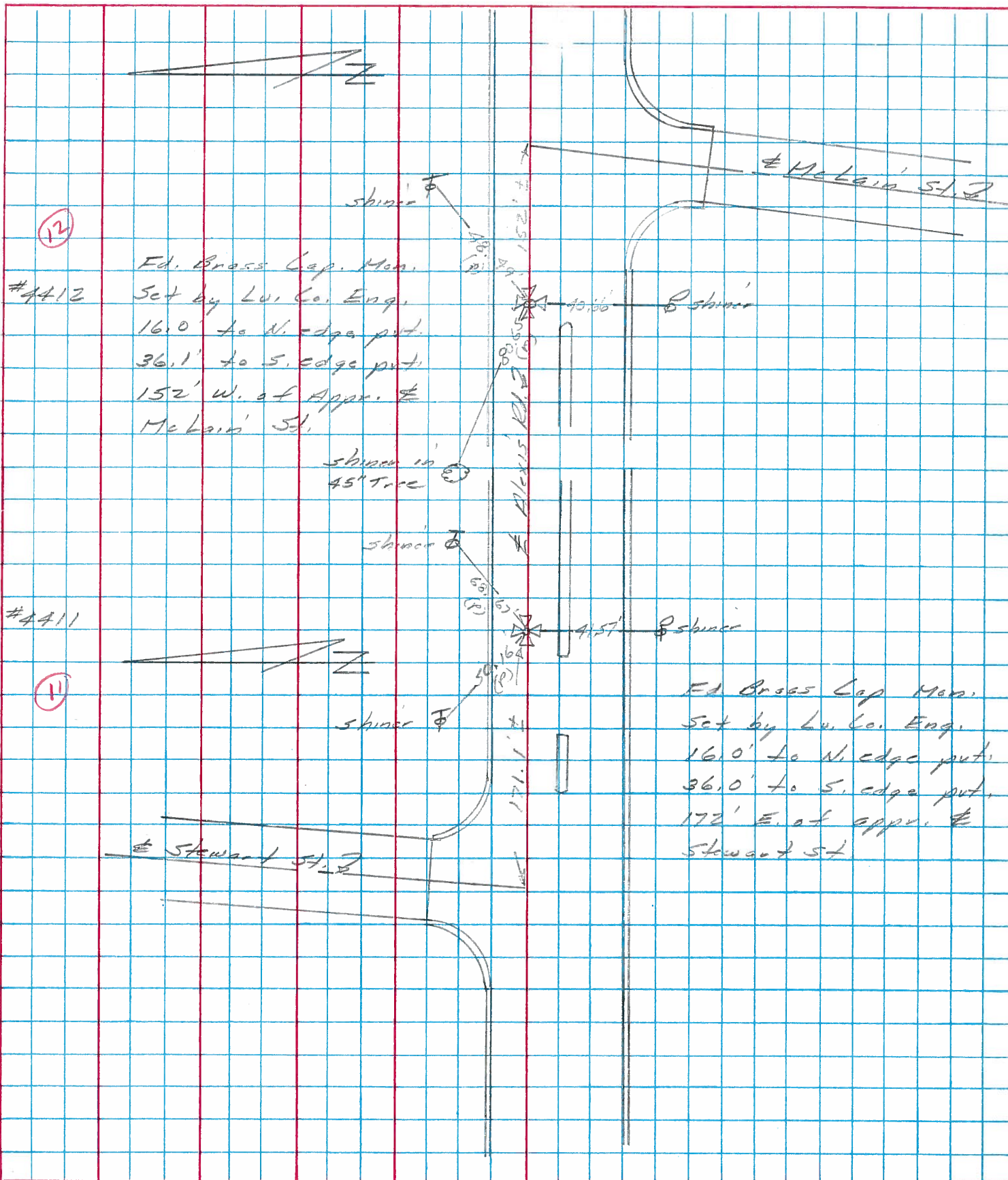
S. R. # 184 WEATHER Cloudy

SEC. 0.00 TEMP. 34°

DESCRIPTION

References to Control Points
LEFT CENTER LINE RIGHT

JOB NO.



(12)

#4412

Ed. Brass Cap Mon.
Set by Lu. Co. Eng.
16.0' to N. edge pt.
36.1' to S. edge pt.
152' W. of Apprx. C.L.
McLain St.

shiner in 45" tree

#4411

(11)

Ed. Brass Cap Mon.
Set by Lu. Co. Eng.
16.0' to N. edge pt.
36.0' to S. edge pt.
172' E. of apprx. C.L.
Stewart St.

PERSONNEL	TITLE	PERSONNEL	TITLE	COUNTY	DATE	WEATHER	TEMP.
Stone	Notes			Lucas	28 June 68		
Beck	Flag			S. R. 27-25 Bypass			
Michalak	Tape			SEC. Alexis Rd.			
Schroder	Tape						

DESCRIPTION References to Control Points JOB NO. _____

