

O.D.O.T. DISTRICT 2 SURVEY OFFICE (USE ONLY)

PERSONNEL

REFERENCE NO. 19

SHEET 2 OF 58

NOTES LOEHRKE DATE 7/20/93  
 H.C. CORDES WEATHER CLEAR  
 R.C. ROMETO TEMP. 76°  
CANTERBURY

ROUTE SR 184  
 COUNTY LUCAS  
 TOWNSHIP SYLANIA  
 SECTION 12

DWG BY NIESE PID \_\_\_\_\_

T 9 S R 6 E

TYPE MONUMENT MONBOX

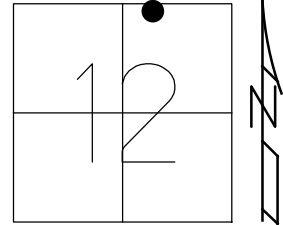
ON SURFACE - ~~BELOW~~ ON

OFFSET CL PAVEMENT 5.0' LT : ~~RT~~  
20.8' TO LT EDGE CURB

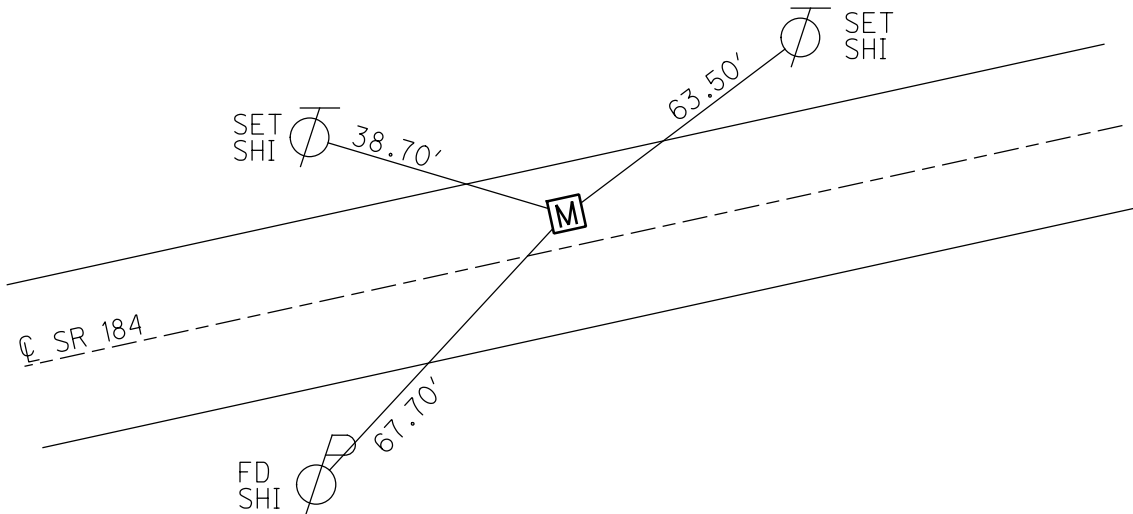
STATION: 107+65

HORZ.DATUM: \_\_\_\_\_ GEOID: \_\_\_\_\_

GRID: NORTHING: \_\_\_\_\_ EASTING: \_\_\_\_\_



RECORD:  
 ±305' EAST OF  
 PLANTATION ST  
 FD MONBOX  
 MEASURED TO  
 CENTER  
 7/20/93, CL



O.D.O.T. DISTRICT 2 SURVEY OFFICE

PERSONNEL

REFERENCE NO. 19

SHEET 17 OF 20

NOTES LOEHRKE

H.C. CORDES

R.C. ROMETO

CANTERBURY

DATE 7-20-93

WEATHER CLEAR

TEMP. 47.6

ROUTE S.P. 184

COUNTY LUCAS

TOWNSHIP \_\_\_\_\_

SECTION \_\_\_\_\_

T. \_\_\_\_\_ R. \_\_\_\_\_

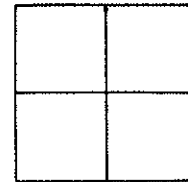
TYPE MONUMENT Mon. Bar. Meas. to Center

ON SURFACE - BELOW Yes

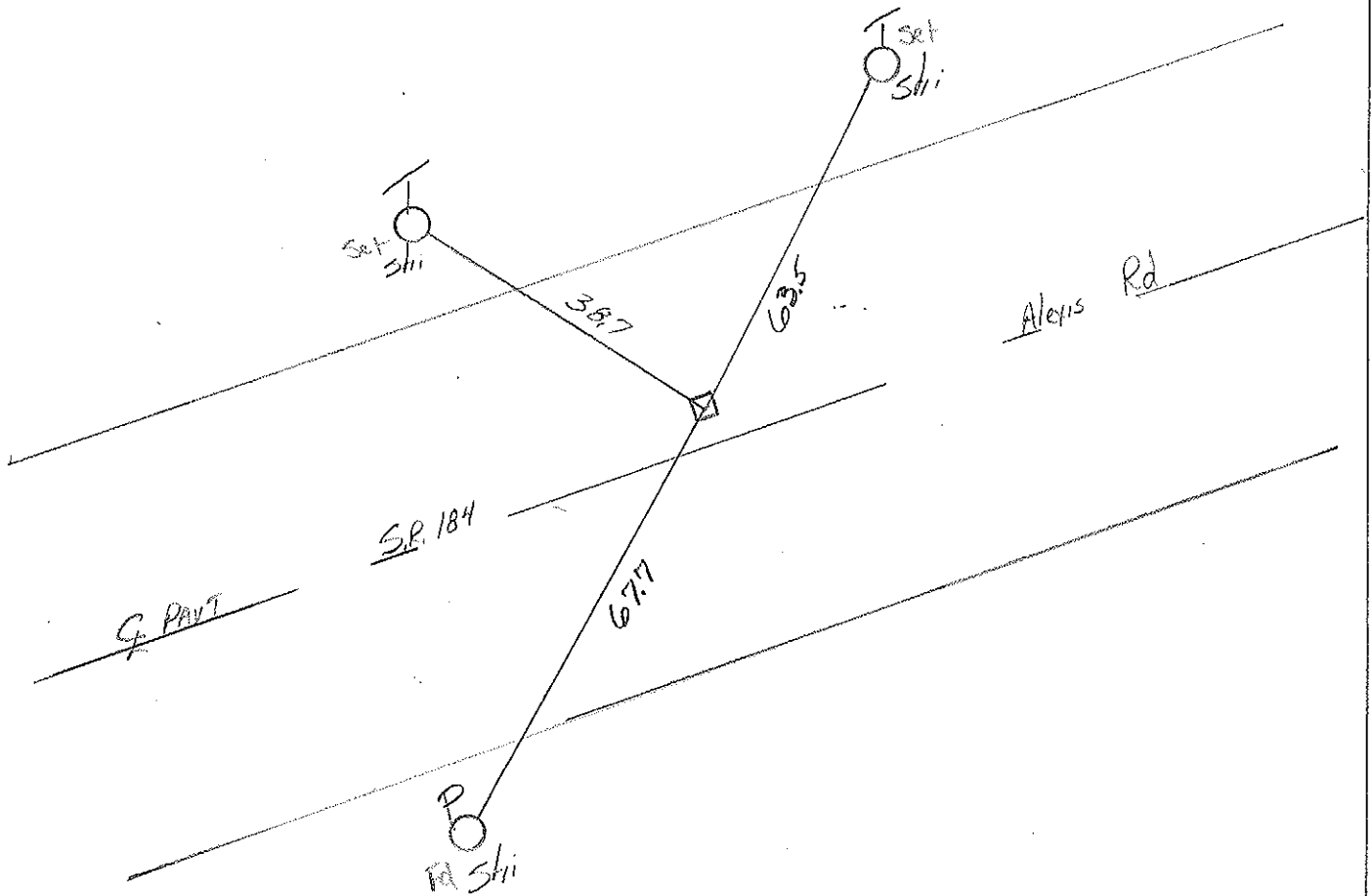
LEFT - CL PAV'T. - RIGHT 5.0'

20.8 TO LT EDGE PAVEMENT CURB

S.L.M. 107 + 65



± 305 E. of PLANTATION ST



PERSONNEL TITLE PERSONNEL TITLE

COUNTY Lucas DATE 20 Feb. 76

Stone  
Michalak  
Curtis

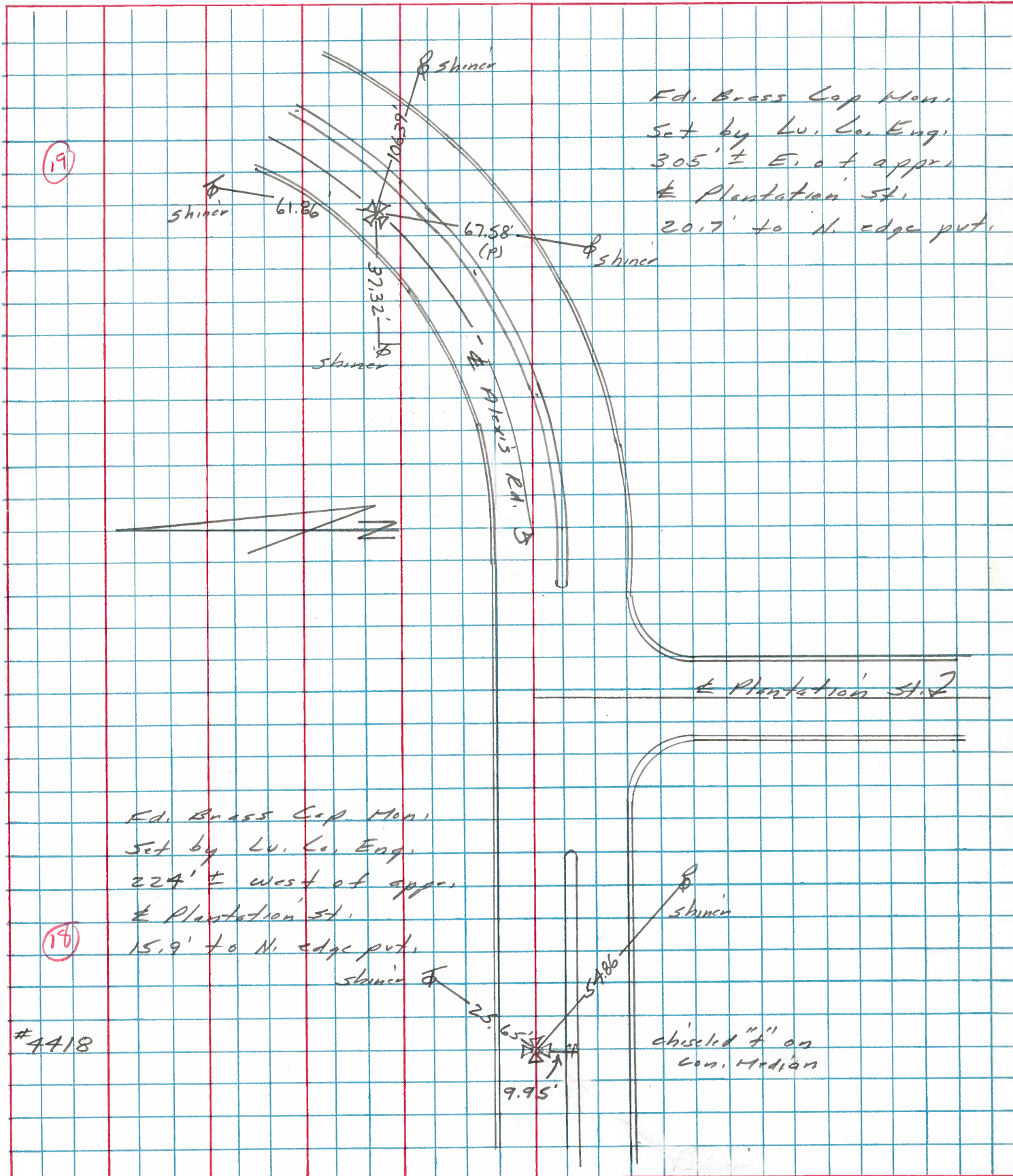
S. R. 184 WEATHER Clear

SEC. 1.50 TEMP. 36°

DESCRIPTION

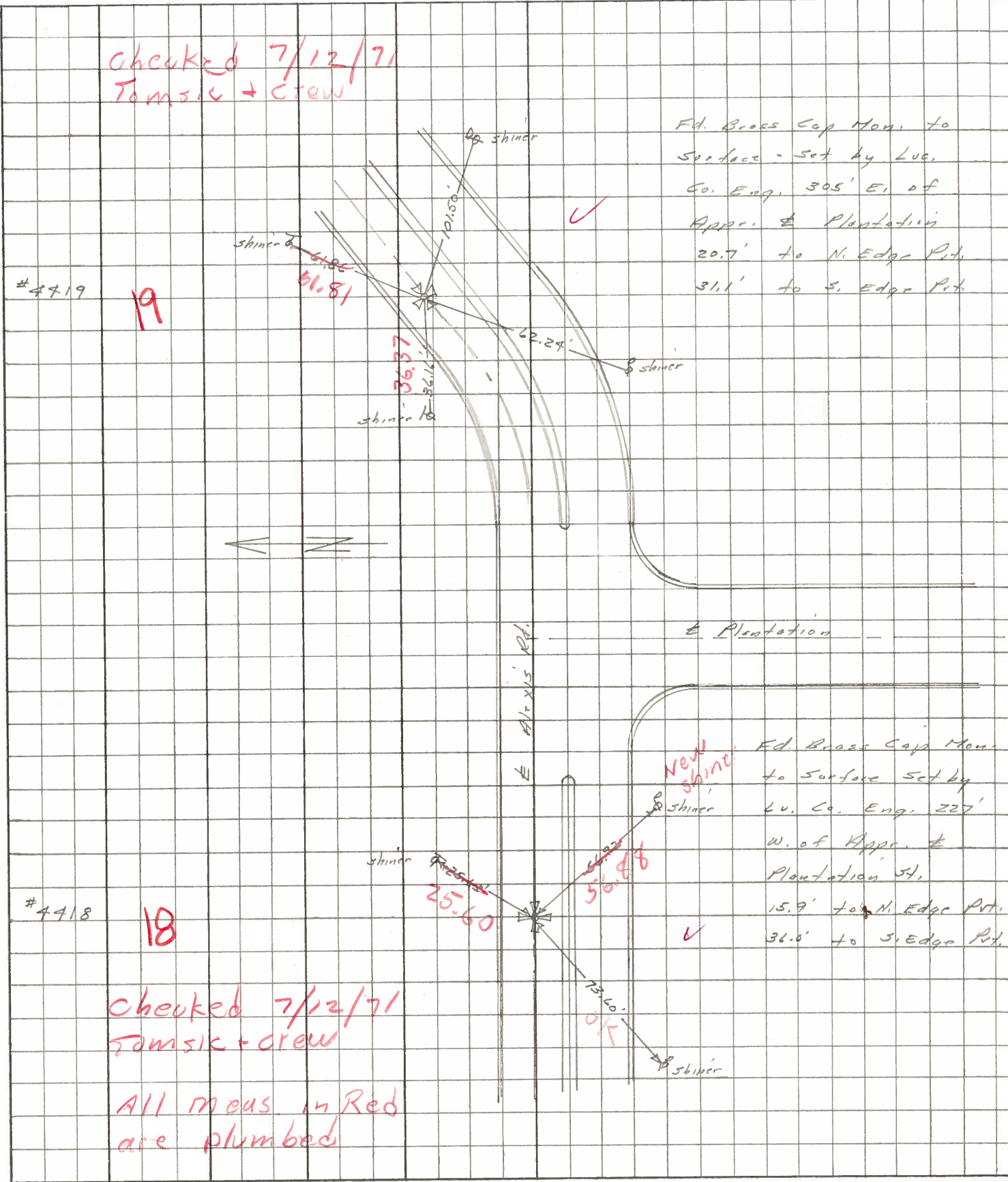
References to Control Points  
LEFT CENTER LINE RIGHT

JOB NO.



PERSONNEL	TITLE	PERSONNEL	TITLE	COUNTY	DATE	WEATHER	TEMP.
Stone	Notes			Lucas	1 July 68	Woods	78°
Michalak	Tape			S. R. 24-25 Bypass			
Schroder	Tape			SEC. Alexis Rd.			

DESCRIPTION References to Control Points JOB NO. \_\_\_\_\_  
 LEFT CENTER LINE RIGHT



checked 7/12/71  
Tomsik + crew

#4419

19

Ed. Brass Cap Mon. to  
Surface - set by Luc.  
Co. Eng. 305' E. of  
Appr. & Plantation  
20.7' to N. Edge Pth.  
31.1' to S. Edge Pth.

#4418

18

Ed. Brass Cap Mon.  
to Surface set by  
Lu. Co. Eng. 227'  
W. of Appr. &  
Plantation St.  
15.9' to N. Edge Pth.  
36.0' to S. Edge Pth.

checked 7/12/71  
Tomsik + crew

All meas. in Red  
are plumbed