

O.D.O.T. DISTRICT 2 SURVEY OFFICE (USE ONLY)

PERSONNEL

REFERENCE NO. 21 A

SHEET 6 OF 58

NOTES STONE DATE 2/20/76
 H.C. MICHALAK WEATHER CLEAR
 R.C. CURTIS TEMP. 44°

ROUTE SR 184
 COUNTY LUCAS
 TOWNSHIP SYLVANIA
 SECTION 12
 T 9 S R 6 E

DWG BY NIESE PID _____

TYPE MONUMENT BRASS CAP

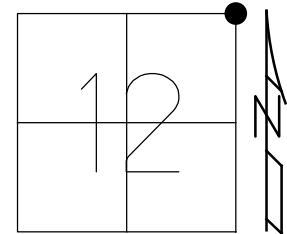
ON SURFACE - ~~BELOW~~ ON

OFFSET ϕ PAVEMENT ON _____ LT : RT
 _____ TO _____ EDGE PAVEMENT

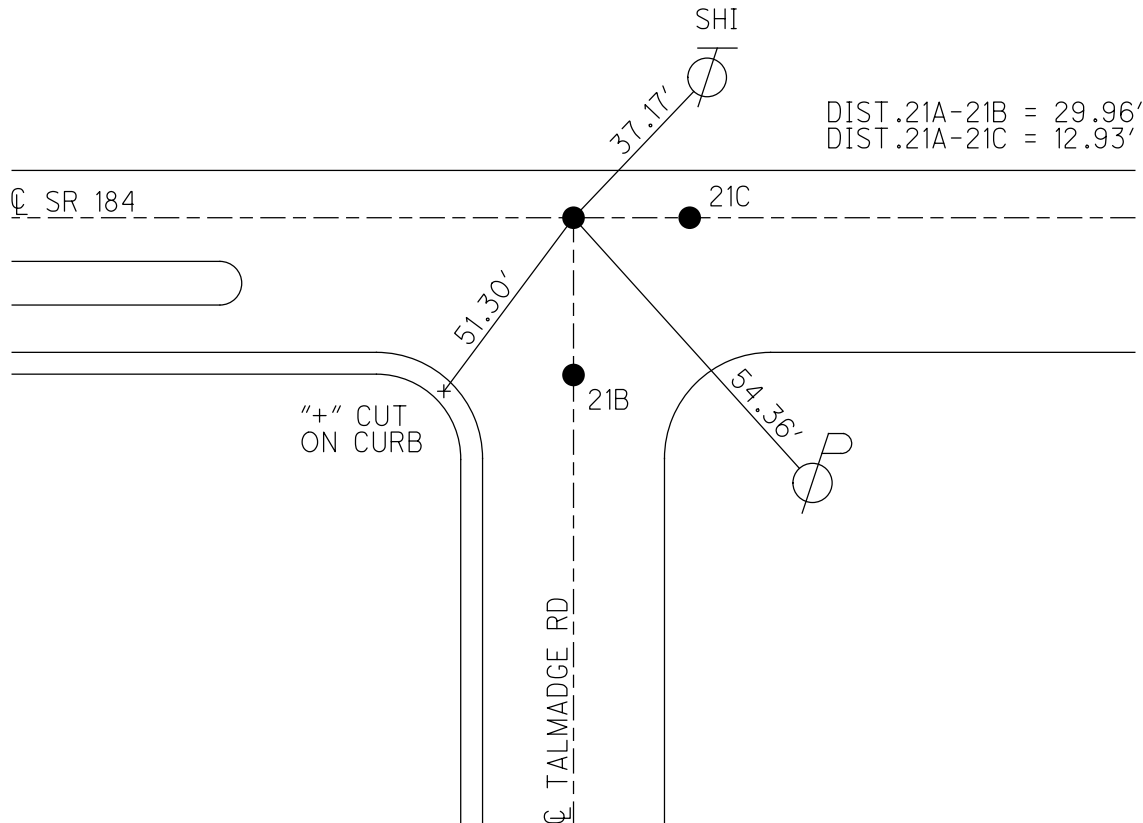
STATION: 126+72

HORZ. DATUM: _____ GEOID: _____

GRID: NORTHING: _____ EASTING: _____



RECORD:
 FD BRASS CAP
 SET BY LUCAS
 COUNTY ENGINEER
 2/20/76, STONE

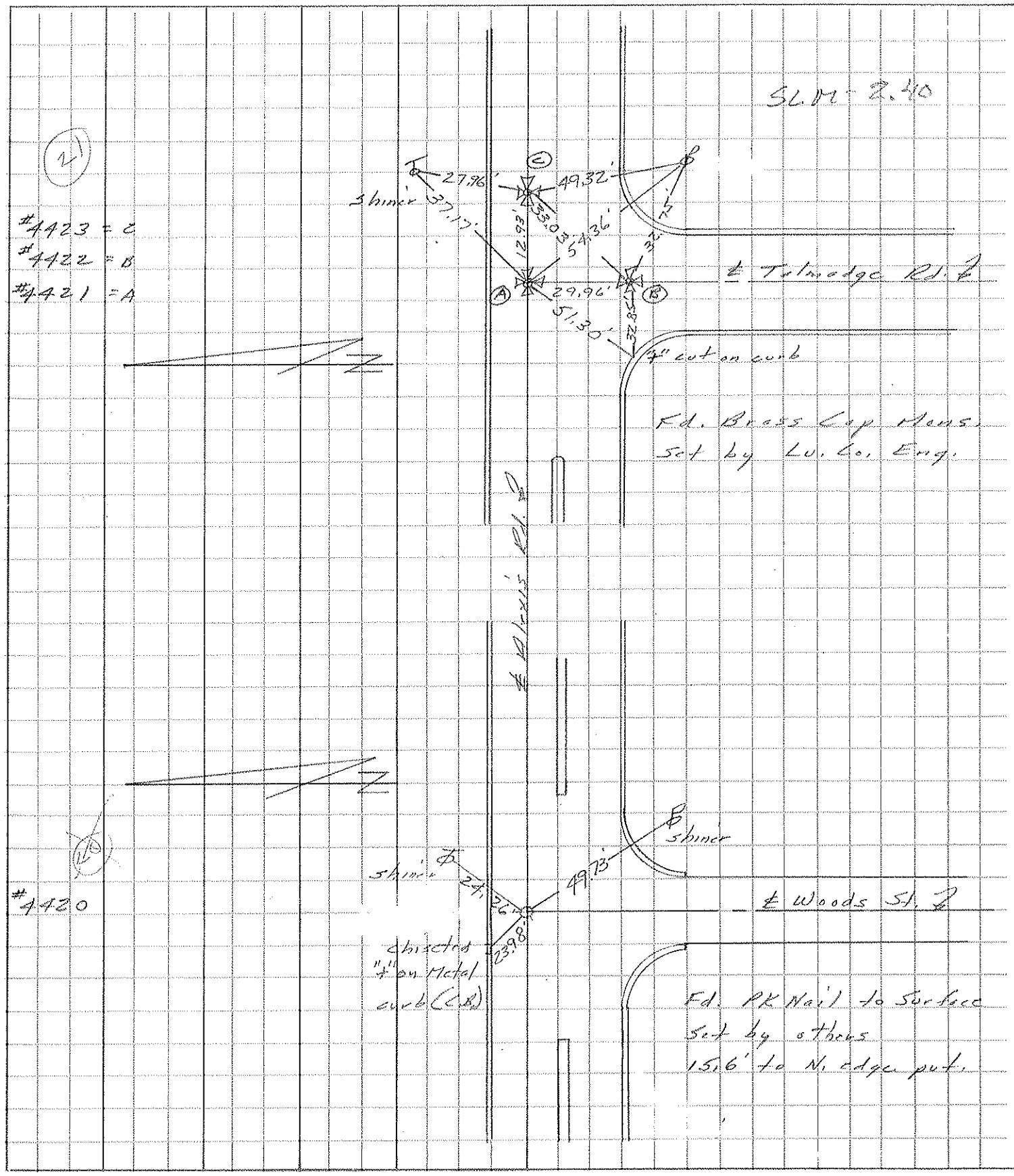


DIST .21A-21B = 29.96'
 DIST .21A-21C = 12.93'

| PERSONNEL | TITLE | PERSONNEL | TITLE |
|-----------|-------|-----------|-------|
| Stone | | | |
| Michalak | | | |
| Curtis | | | |

COUNTY Lucas DATE 20 Feb. 76
 S. R. 184 WEATHER Clear
 SEC. 2.00 TEMP. 44°

DESCRIPTION References to Control Points JOB NO. _____
 LEFT CENTER LINE RIGHT



#4423 = C
 #4422 = B
 #4421 = A

#4420

SLM-2.40

Tulmage Rd.

Fd. Brass Cup Mens.
 Set by Lu. Co. Eng.

4" cut on curb

Bliss Rd.

Woods St.

Fd. PK Nail to Surface
 Set by others
 15.6' to N. edge put.

shiner
 shiner
 directed
 1" on Metal
 curb (C.R.)

| PERSONNEL | TITLE | PERSONNEL | TITLE |
|-----------|-------|-----------|-------|
| Stone | Notes | | |
| Michalak | Tape | | |
| Schroeder | Tape | | |

COUNTY Lucas DATE 1 July 68
 S. R. 24-25 Bypass WEATHER Warm
 SEC. Alexis Rd. TEMP. 80°

DESCRIPTION References to Control Points JOB NO. _____
 LEFT CENTER LINE RIGHT

