

O.D.O.T. DISTRICT 2 SURVEY OFFICE (USE ONLY)

PERSONNEL

REFERENCE NO. 21 B

SHEET 7 OF 58

NOTES STONE DATE 2/20/76
 H.C. MICHALAK WEATHER CLEAR
 R.C. CURTIS TEMP. 44°

ROUTE SR 184
 COUNTY LUCAS
 TOWNSHIP SYLVANIA
 SECTION 12
 T 9 S R 6 E

DWG BY NIESE PID _____

TYPE MONUMENT BRASS CAP

ON SURFACE - ~~BELOW~~ ON

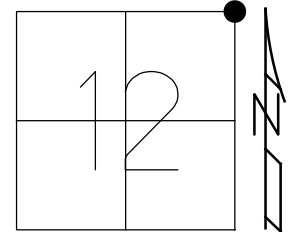
OFFSET C PAVEMENT 29.96' RT : RT

TO EDGE PAVEMENT

STATION: 126+72

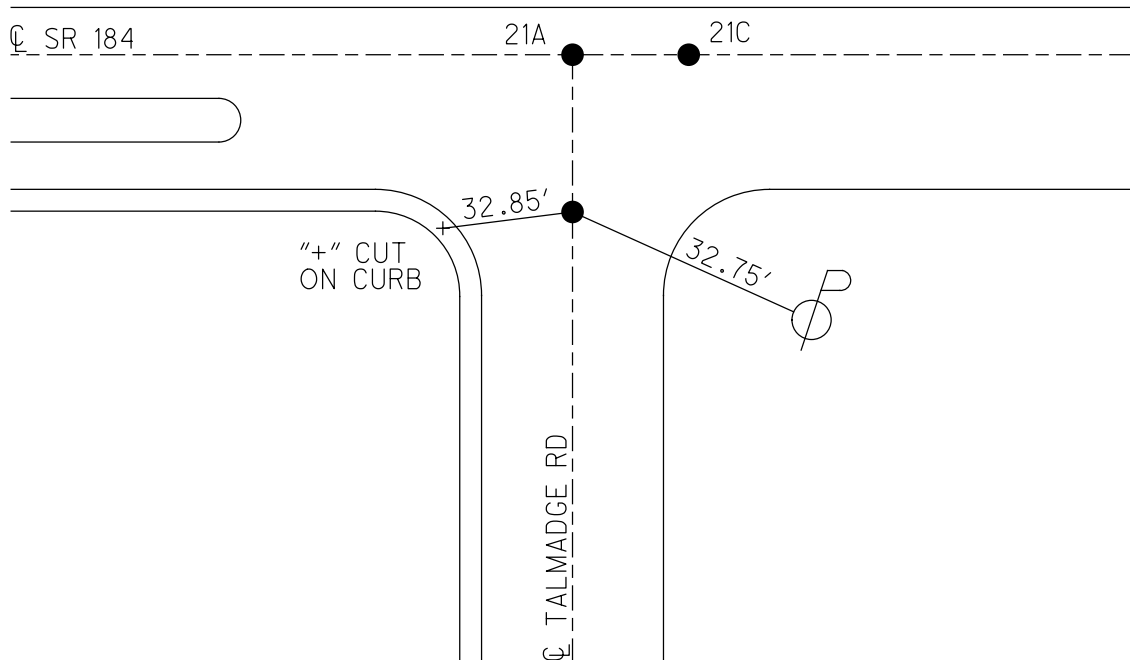
HORZ.DATUM: _____ GEOID: _____

GRID: NORTHING: _____ EASTING: _____



RECORD:
 FD BRASS CAP
 SET BY LUCAS
 COUNTY ENGINEER
 2/20/76, STONE

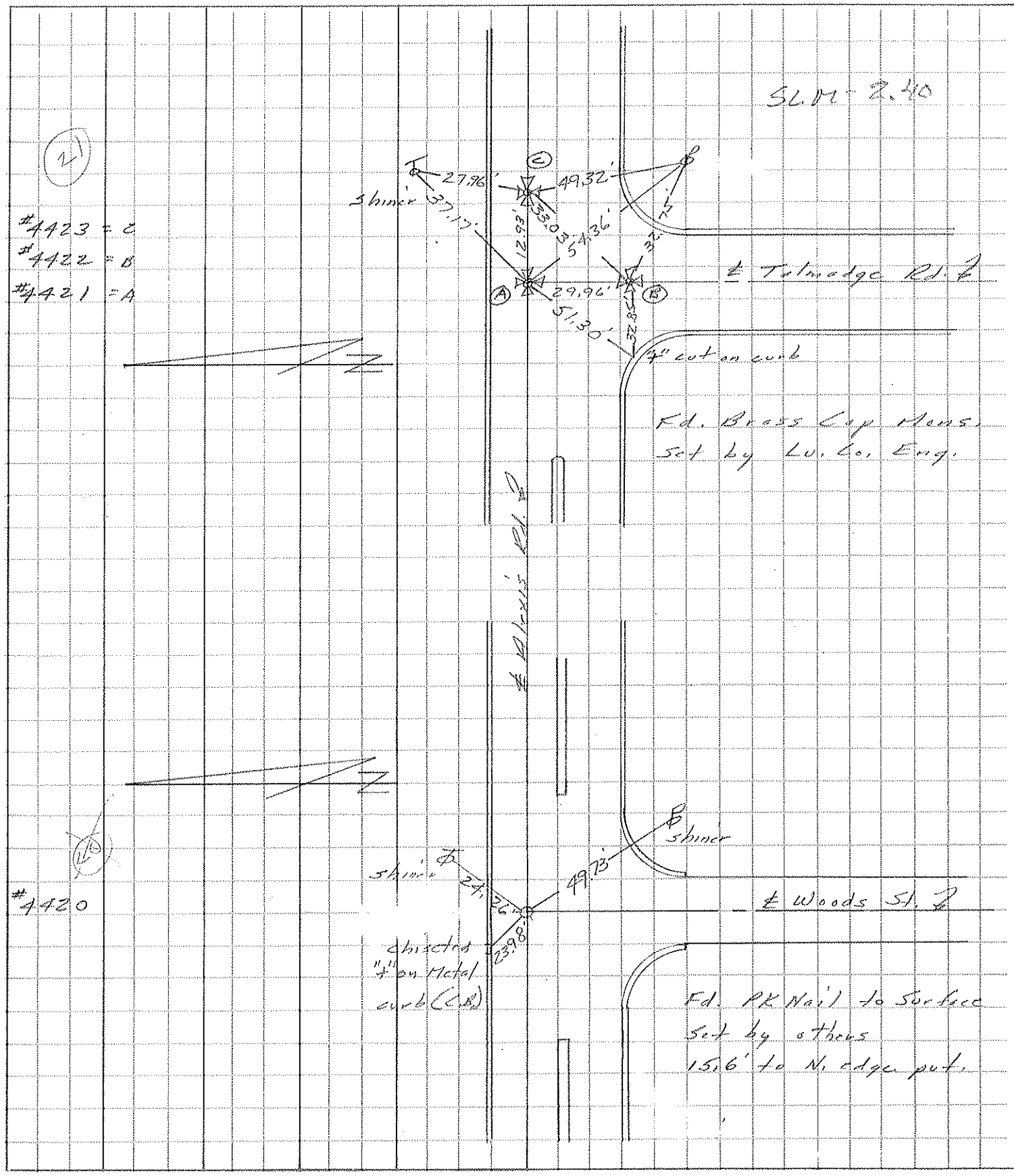
DIST .21A-21B = 29.96'
 DIST .21A-21C = 12.93'



PERSONNEL	TITLE	PERSONNEL	TITLE
Stone			
Michalak			
Curtis			

COUNTY Lucas DATE 20 Feb. 76
 S. R. 184 WEATHER Clear
 SEC. 2.00 TEMP. 44°

DESCRIPTION References to Control Points JOB NO. _____
 LEFT CENTER LINE RIGHT



PERSONNEL	TITLE	PERSONNEL	TITLE
Stone	Notes		
Michalak	Tape		
Schnoder	Tape		

COUNTY Lucas DATE 1 July 68
 S. R. 24-25 Bypass WEATHER Warm
 SEC. Alexis Rd. TEMP. 80°

DESCRIPTION References to Control Points JOB NO. _____
 LEFT CENTER LINE RIGHT

