

O.D.O.T. DISTRICT 2 SURVEY OFFICE (USE ONLY)

PERSONNEL

REFERENCE NO. 21 C

SHEET 8 OF 58

NOTES STONE DATE 2/20/76

H.C. MICHALAK WEATHER CLEAR

R.C. STONE TEMP. 44°

ROUTE SR 184

COUNTY LUCAS

TOWNSHIP SYLVANIA

SECTION 12

DWG BY NIESE PID _____

T 9 S R 6 E

TYPE MONUMENT BRASS CAP

ON SURFACE - ~~BELOW~~ ON

OFFSET \odot PAVEMENT ON _____ LT : RT

_____ TO _____ EDGE PAVEMENT

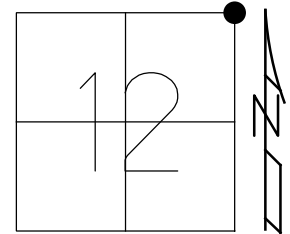
STATION: 127+15

HORZ.DATUM: _____

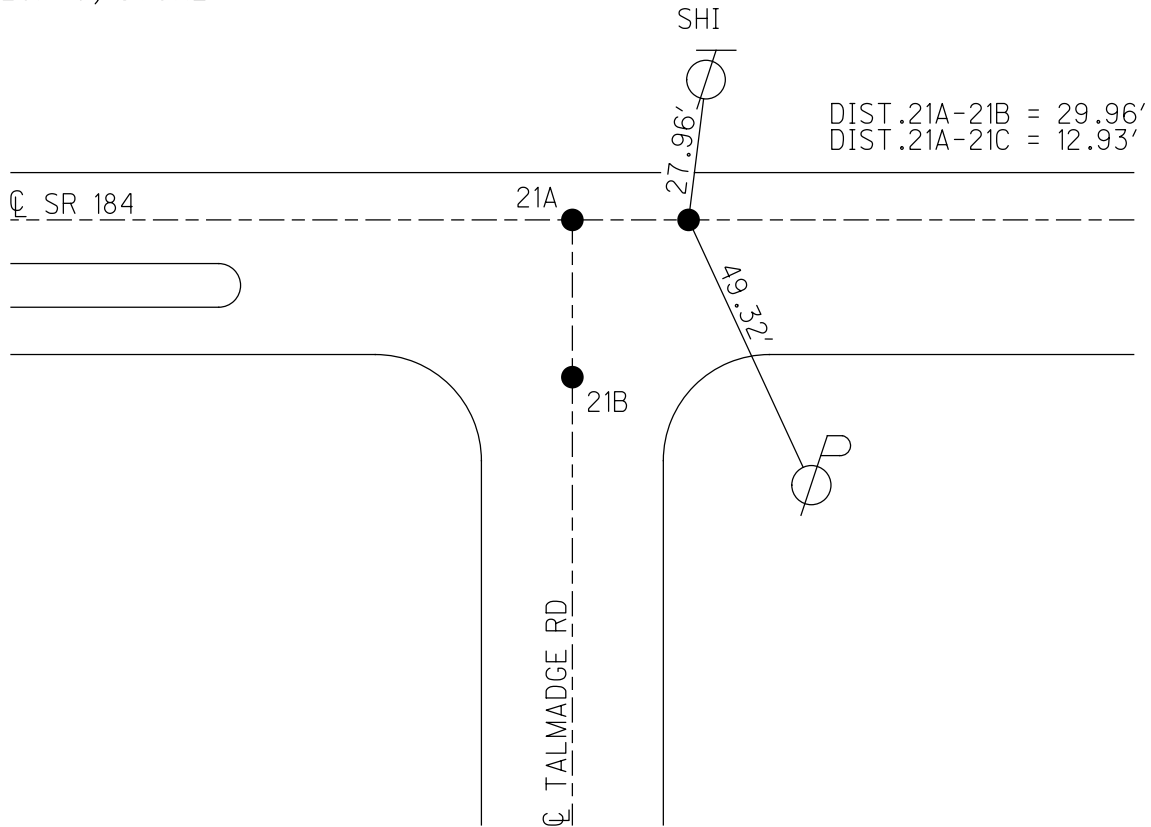
GEOID: _____

GRID: NORTHING: _____

EASTING: _____



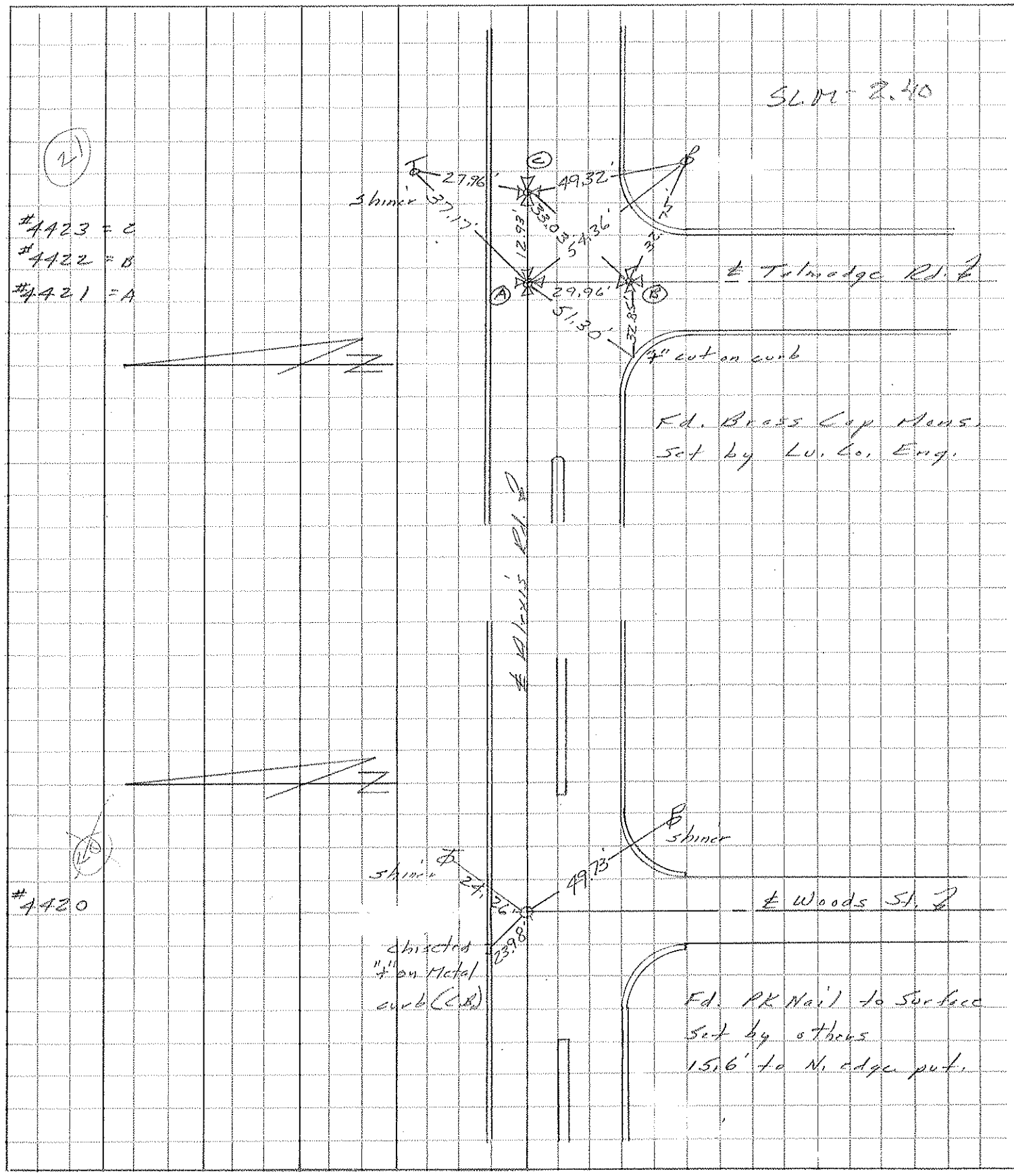
RECORD:
FD BRASS CAP
SET BY LUCAS
COUNTY ENGINEER
2/20/76, STONE



PERSONNEL	TITLE	PERSONNEL	TITLE
Stone			
Michalak			
Curtis			

COUNTY Lucas DATE 20 Feb. 76
 S. R. 184 WEATHER Clear
 SEC. 2.00 TEMP. 44°

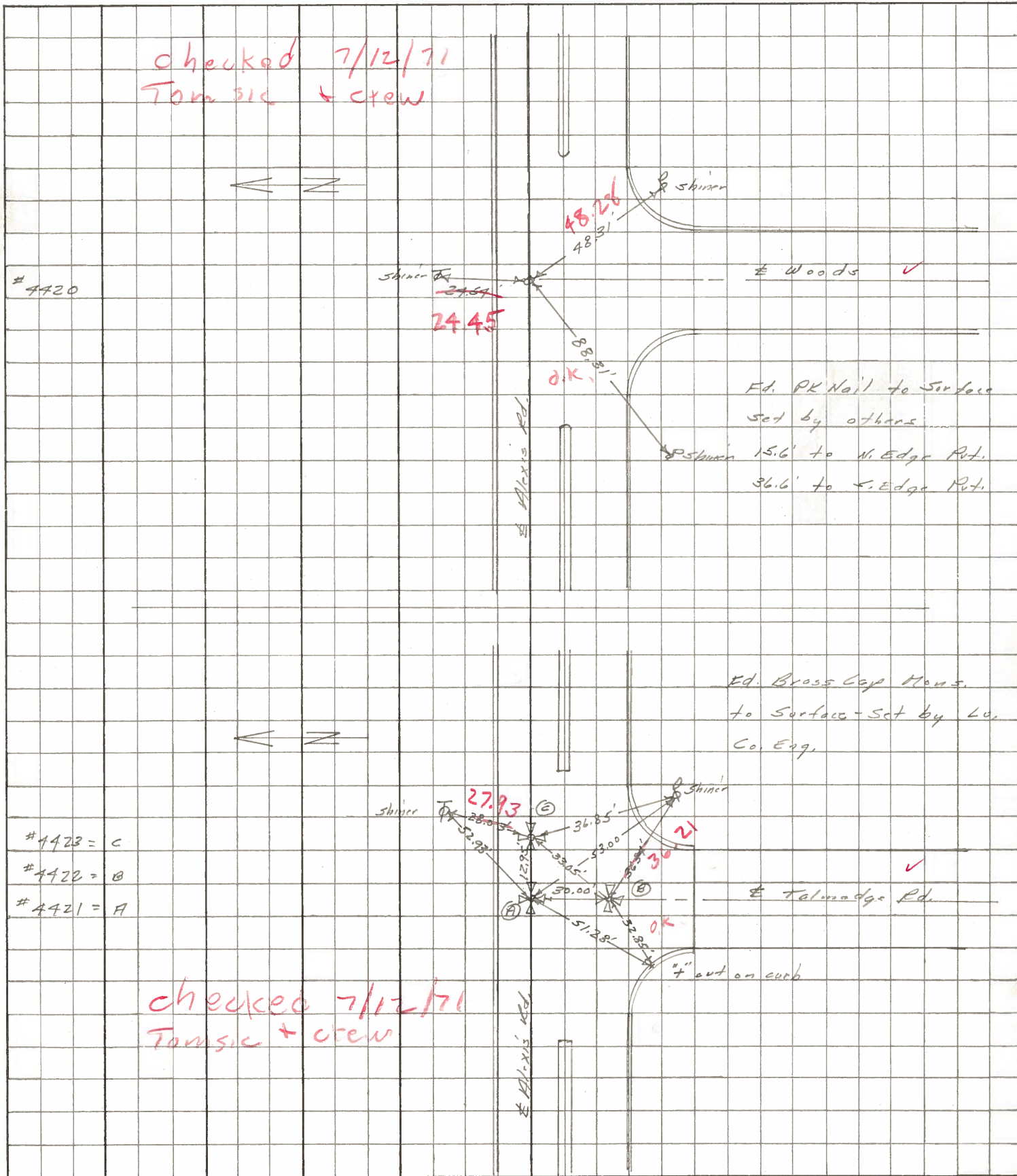
DESCRIPTION References to Control Points JOB NO. _____
 LEFT CENTER LINE RIGHT



PERSONNEL	TITLE	PERSONNEL	TITLE
Stone	Notes		
Michalak	Tape		
Schnoder	Tape		

COUNTY Lucas DATE 1 July 68
 S. R. 24-25 Bypass WEATHER Warm
 SEC. Alexis Rd. TEMP. 80°

DESCRIPTION References to Control Points JOB NO. _____
 LEFT CENTER LINE RIGHT



4420

4423 = C

4422 = B

4421 = A

checked 7/12/71
Tomasic + crew

checked 7/12/71
Tomasic + crew