

O.D.O.T. DISTRICT 2 SURVEY OFFICE (USE ONLY)

PERSONNEL

REFERENCE NO. 29

SHEET 11 OF 58

NOTES STONE DATE 2/23/76

ROUTE SR 184

H.C. MICHALAK WEATHER COLD

COUNTY LUCAS

R.C. CURTIS TEMP. 24°

TOWNSHIP CITY OF TOLEDO

SECTION 7

DWG BY NIESE PID \_\_\_\_\_

T 9 S R 7 E

TYPE MONUMENT BRASS CAP

ON SURFACE - ~~BELOW~~ ON

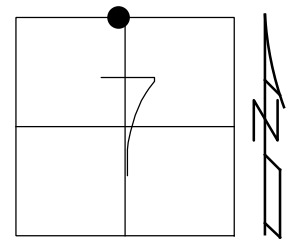
OFFSET Q PAVEMENT ON \_\_\_\_\_ LT : RT

16.6' TO LT EDGE PAVEMENT

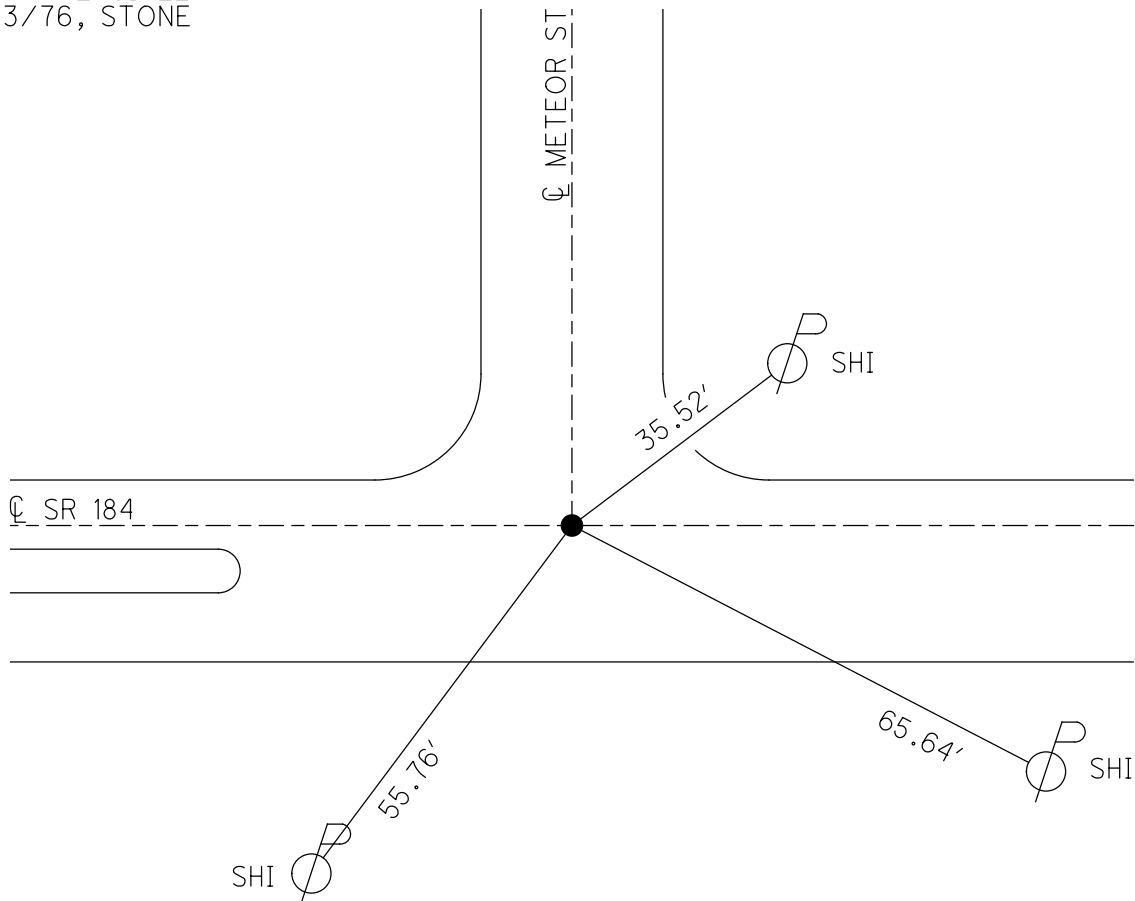
STATION: 151+54

HORZ. DATUM: \_\_\_\_\_ GEOID: \_\_\_\_\_

GRID: NORTHING: \_\_\_\_\_ EASTING: \_\_\_\_\_

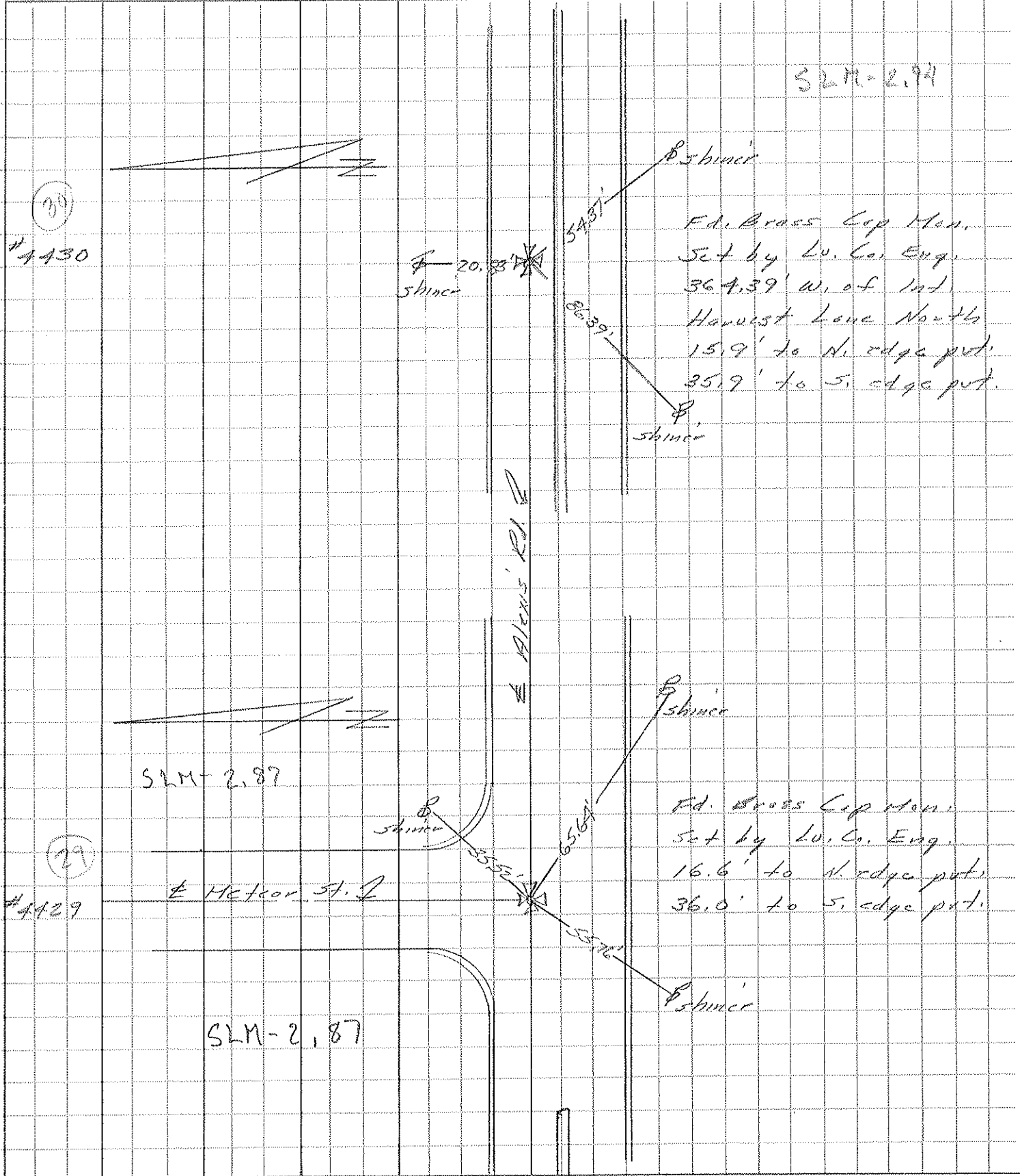


RECORD:  
FD BRASS CAP MON  
SET BY LUCAS  
COUNTY ENGINEER  
2/23/76, STONE



PERSONNEL	TITLE	PERSONNEL	TITLE	COUNTY	DATE	WEATHER	TEMP.
Stone				Locas	23 Feb, 76	Cold	27°
Michalak				S. R. 184			
Curtis				SEC. 2.30 ±			

DESCRIPTION References to Central Points JOB NO. \_\_\_\_\_  
 LEFT CENTER LINE RIGHT



PERSONNEL	TITLE	PERSONNEL	TITLE	COUNTY	DATE
Stone	Notes			Lucas	2 July 68
Michalek	Tape			S. R. 24-25 By Pass	WEATHER Warm
Schnoder	Tape			SEC. Alexis Rd.	TEMP. 75°

DESCRIPTION References to Control Points JOB NO. \_\_\_\_\_  
 LEFT CENTER LINE RIGHT

