

O.D.O.T. DISTRICT 2 SURVEY OFFICE (USE ONLY)

PERSONNEL

REFERENCE NO. 30

SHEET 12 OF 58

NOTES STONE DATE 2/23/76

H.C. MICHALAK WEATHER COLD

R.C. CURTIS TEMP. 24°

ROUTE SR 184

COUNTY LUCAS

TOWNSHIP CITY OF TOLEDO

SECTION 7

DWG BY NIESE PID \_\_\_\_\_

T 9 S R 7 E

TYPE MONUMENT BRASS CAP

ON SURFACE - ~~BELOW~~ ON

OFFSET  $\varnothing$  PAVEMENT ON \_\_\_\_\_ LT : RT

15.9' TO LT EDGE PAVEMENT

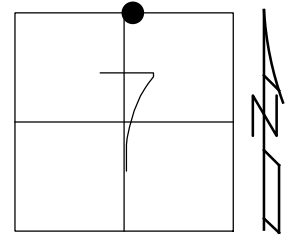
STATION: 155+23

HORIZ.DATUM: \_\_\_\_\_

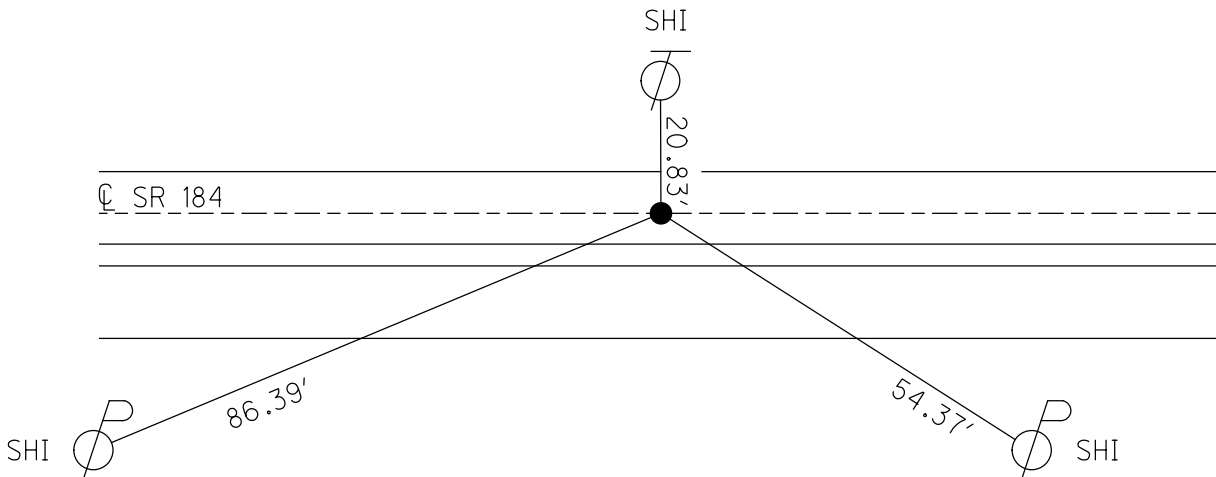
GEOID: \_\_\_\_\_

GRID: NORTHING: \_\_\_\_\_

EASTING: \_\_\_\_\_



RECORD:  
FD BRASS CAP MON  
SET BY LUCAS  
COUNTY ENGINEER  
2/23/76, STONE

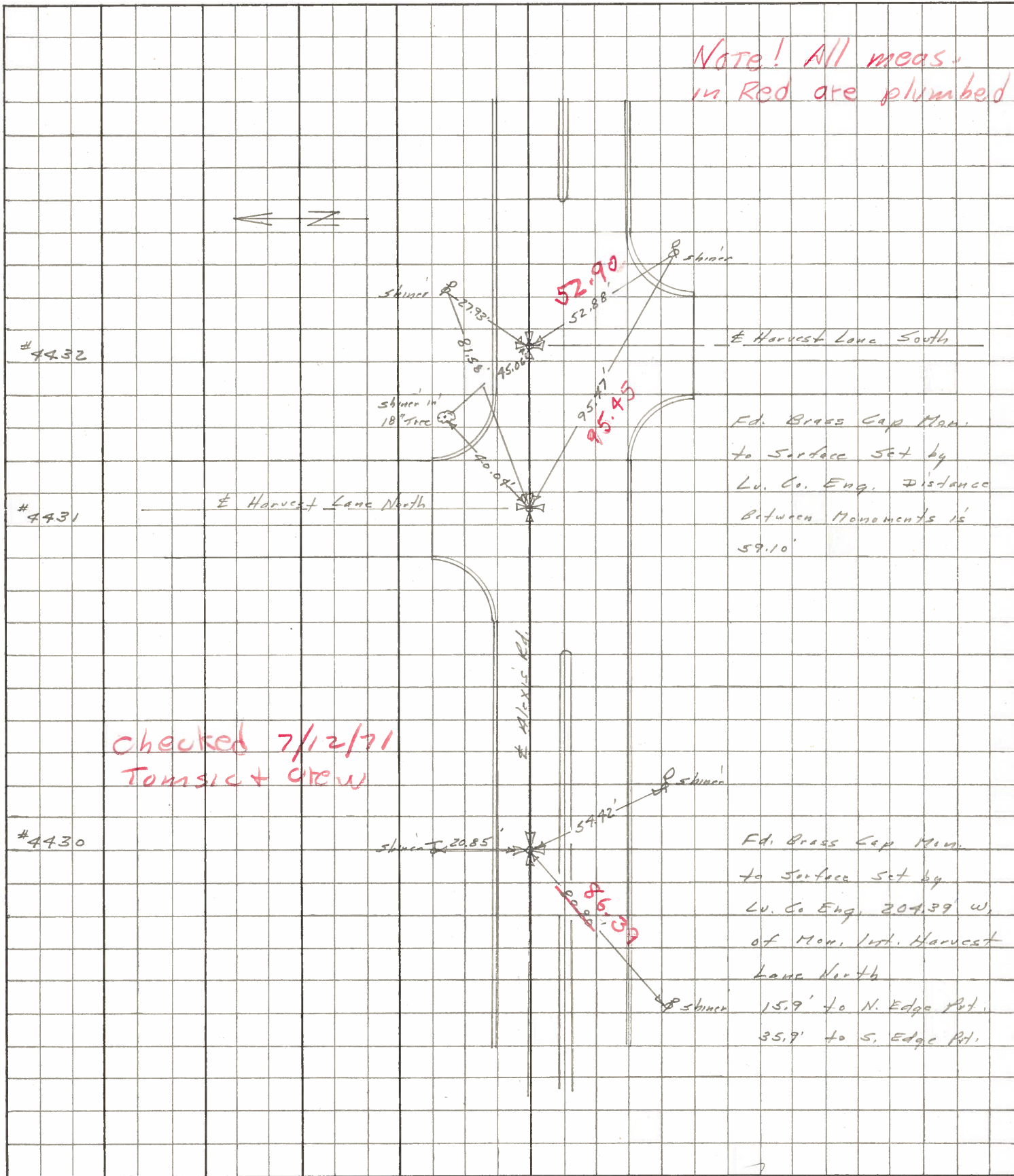




| PERSONNEL       | TITLE        | PERSONNEL | TITLE |
|-----------------|--------------|-----------|-------|
| <u>Slone</u>    | <u>Notes</u> |           |       |
| <u>Michelak</u> | <u>Tape</u>  |           |       |
| <u>Schroder</u> | <u>Tape</u>  |           |       |

COUNTY Lucas DATE 1 July 68  
 S. R. 24-25 Bypass WEATHER Warm  
 SEC. Alexis Rd. TEMP. 85°

DESCRIPTION References to Control Points JOB NO. \_\_\_\_\_  
 LEFT CENTER LINE RIGHT



Fd. Brass Cap Mon.  
to Surface Set by  
Lu. Co. Eng. Distance  
Between Monuments is  
59.10'

Fd. Brass Cap Mon.  
to Surface Set by  
Lu. Co. Eng. 304.39' W.  
of Mon. Int. Harvest  
Lane North  
15.9' to N. Edge Pt.  
35.9' to S. Edge Pt.