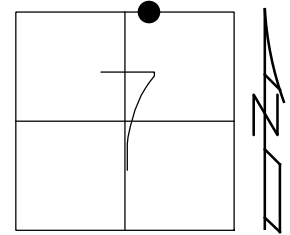


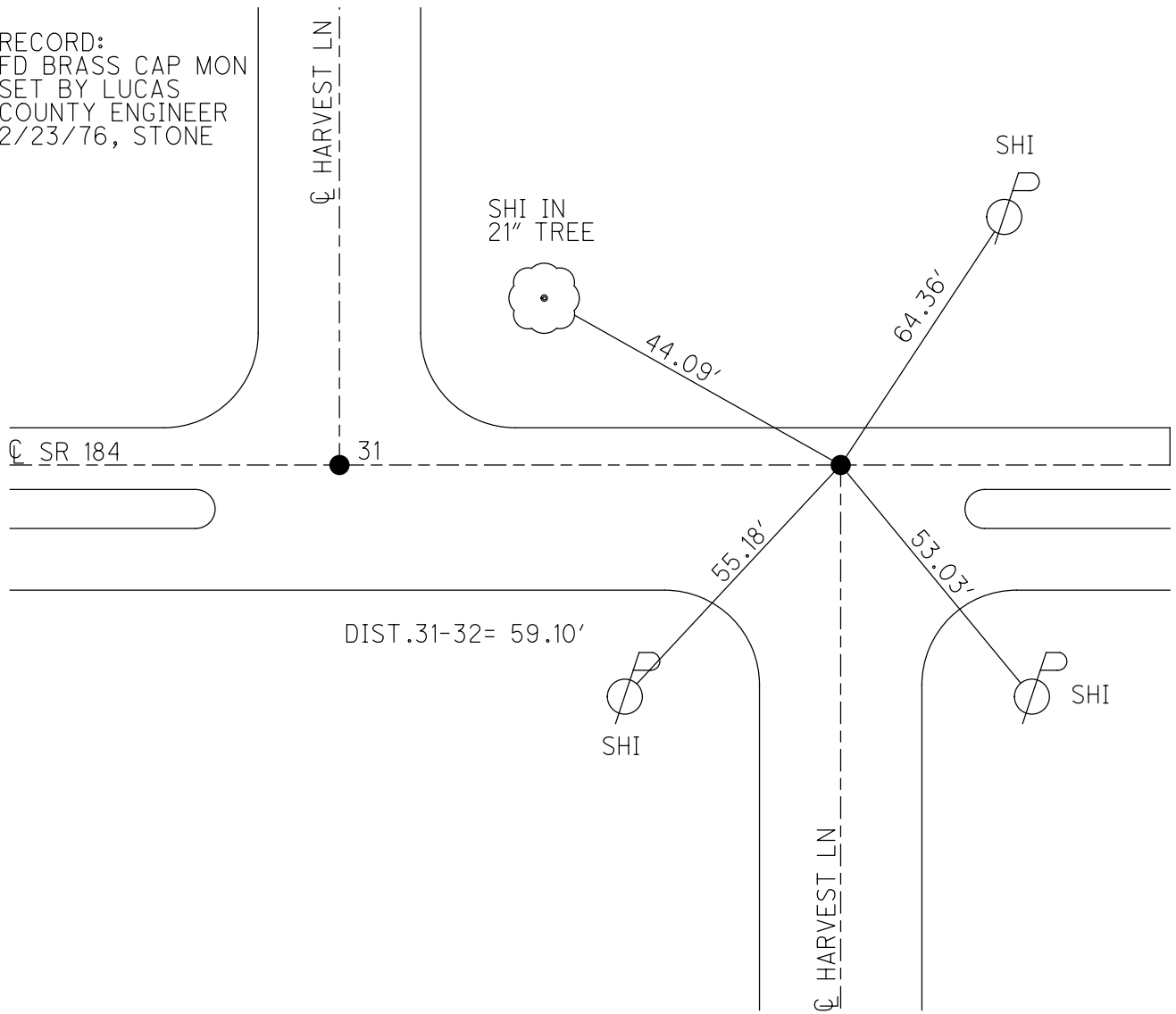
O.D.O.T. DISTRICT 2 SURVEY OFFICE (USE ONLY)

PERSONNEL \_\_\_\_\_ REFERENCE NO. 32 SHEET 14 OF 58  
 NOTES STONE DATE 2/23/76 ROUTE SR 184  
 H.C. MICHALAK WEATHER COOL COUNTY LUCAS  
 R.C. CURTIS TEMP. 26° TOWNSHIP CITY OF TOLEDO  
 DWG BY NIESE PID \_\_\_\_\_ SECTION 7  
 T 9 S R 7 E

TYPE MONUMENT BRASS CAP  
 ON SURFACE - ~~BELOW~~ ON  
 OFFSET Q PAVEMENT ON LT : RT  
\_\_\_\_\_ TO \_\_\_\_\_ EDGE PAVEMENT  
 STATION: 159+52  
 HORZ.DATUM: \_\_\_\_\_ GEOID: \_\_\_\_\_  
 GRID: NORTHING: \_\_\_\_\_ EASTING: \_\_\_\_\_



RECORD:  
 FD BRASS CAP MON  
 SET BY LUCAS  
 COUNTY ENGINEER  
 2/23/76, STONE



PERSONNEL	TITLE	PERSONNEL	TITLE	COUNTY	DATE	WEATHER	TEMP.
<u>Stowe</u>				<u>Lucas</u>	<u>23 Feb, 76</u>	<u>Cool</u>	<u>26°</u>
<u>Michaelok</u>				<u>184</u>			
<u>Cardis</u>				<u>2.50 ±</u>			

DESCRIPTION References to Control Points JOB NO. \_\_\_\_\_

LEFT CENTER LINE RIGHT

