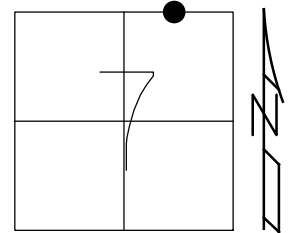


O.D.O.T. DISTRICT 2 SURVEY OFFICE (USE ONLY)

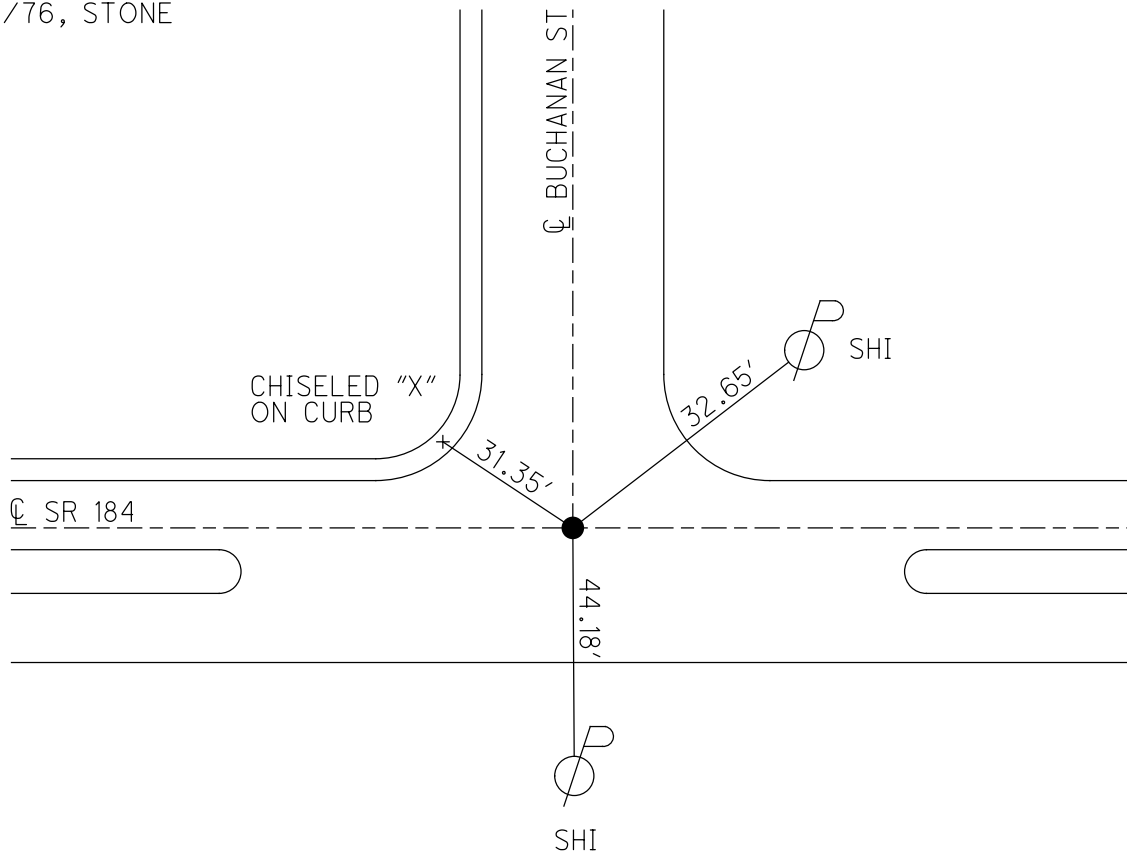
PERSONNEL _____ REFERENCE NO. 33 SHEET 15 OF 58
 NOTES STONE DATE 2/23/76 ROUTE SR 184
 H.C. MICHALAK WEATHER COOL COUNTY LUCAS
 R.C. CURTIS TEMP. 26° TOWNSHIP CITY OF TOLEDO
 DWG BY NIESE PID _____ SECTION 7
 T 9 S R 7 E

TYPE MONUMENT BRASS CAP
 ON SURFACE - ~~BELOW~~ ON
 OFFSET ☐ PAVEMENT ON LT : RT
16.6' TO LT EDGE PAVEMENT
 STATION: 165+79



HORZ. DATUM: _____ GEOID: _____
 GRID: NORTHING: _____ EASTING: _____

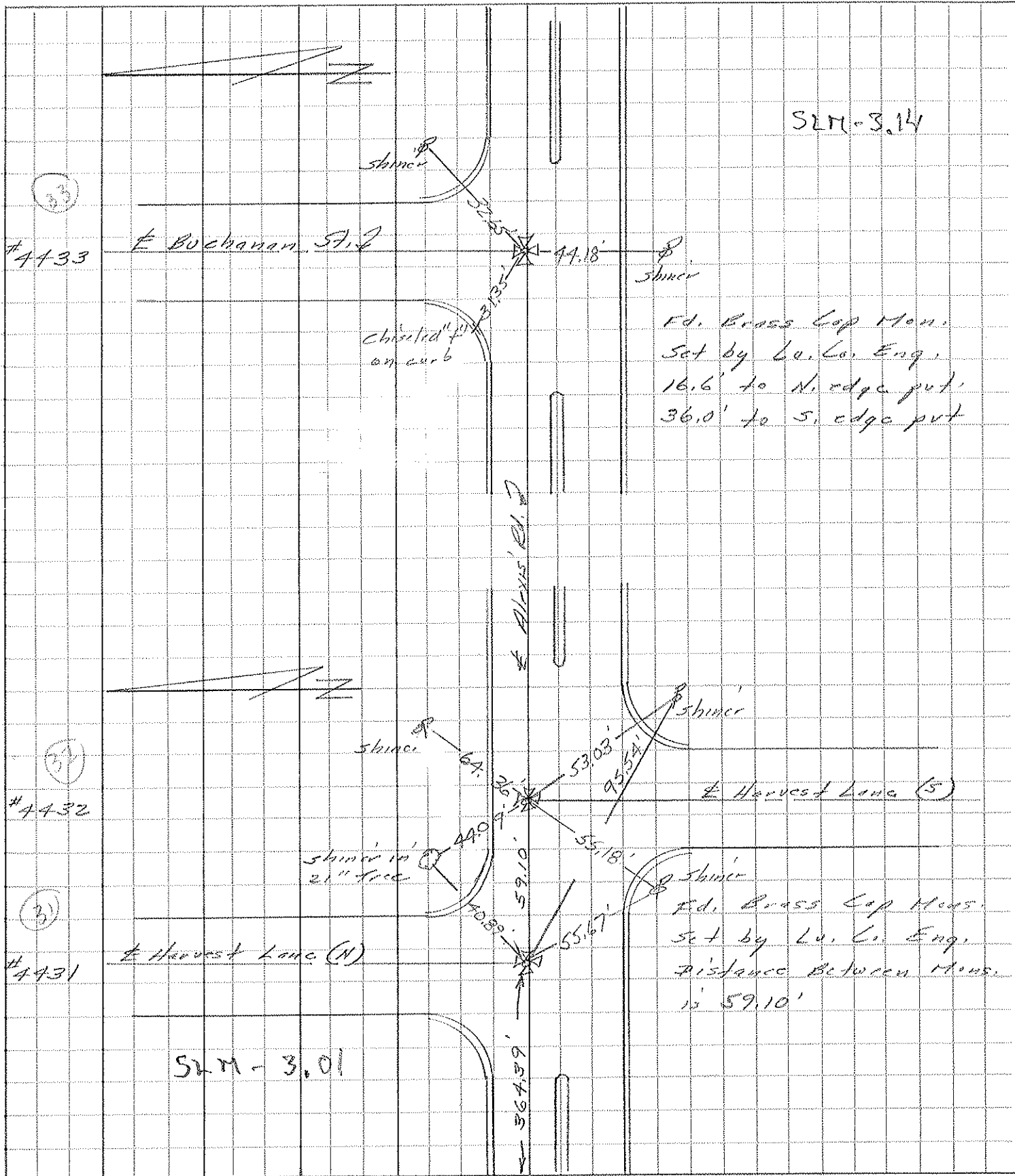
RECORD:
 FD BRASS CAP MON
 SET BY LUCAS
 COUNTY ENGINEER
 2/23/76, STONE



PERSONNEL	TITLE	PERSONNEL	TITLE	COUNTY	DATE	WEATHER	TEMP.
Stowe				Lucas	23 Feb, 76	Cool	26°
Michaelok				S. R. 184			
Cardis				SEC. 2,50±			

DESCRIPTION *References to Control Points* JOB NO.

LEFT CENTER LINE RIGHT



PERSONNEL	TITLE	PERSONNEL	TITLE	COUNTY	DATE
Stone	Notes			Lucas	2 July 68
Michalek	Tape			S. R. 24-25 By Pass	WEATHER Warm
Schnoder	Tape			SEC. Alexis Rd.	TEMP. 75°

DESCRIPTION References to Control Points JOB NO. _____
 LEFT CENTER LINE RIGHT

