

O.D.O.T. DISTRICT 2 SURVEY OFFICE (USE ONLY)

PERSONNEL \_\_\_\_\_

REFERENCE NO. 34

SHEET 16 OF 58

NOTES STONE

DATE 2/23/76

ROUTE SR 184

H.C. MICHALAK

WEATHER COOL

COUNTY LUCAS

R.C. CURTIS

TEMP. 28°

TOWNSHIP CITY OF TOLEDO

DWG BY \_\_\_\_\_ PID \_\_\_\_\_

SECTION 7

T 9 S R 7 E

TYPE MONUMENT BRASS CAP

ON SURFACE - ~~BELOW~~ ON

OFFSET  $\varnothing$  PAVEMENT ON \_\_\_\_\_ LT : RT

16.6' TO LT EDGE PAVEMENT

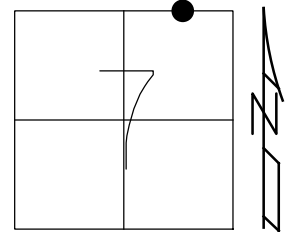
STATION: 167+90

HORIZ.DATUM: \_\_\_\_\_

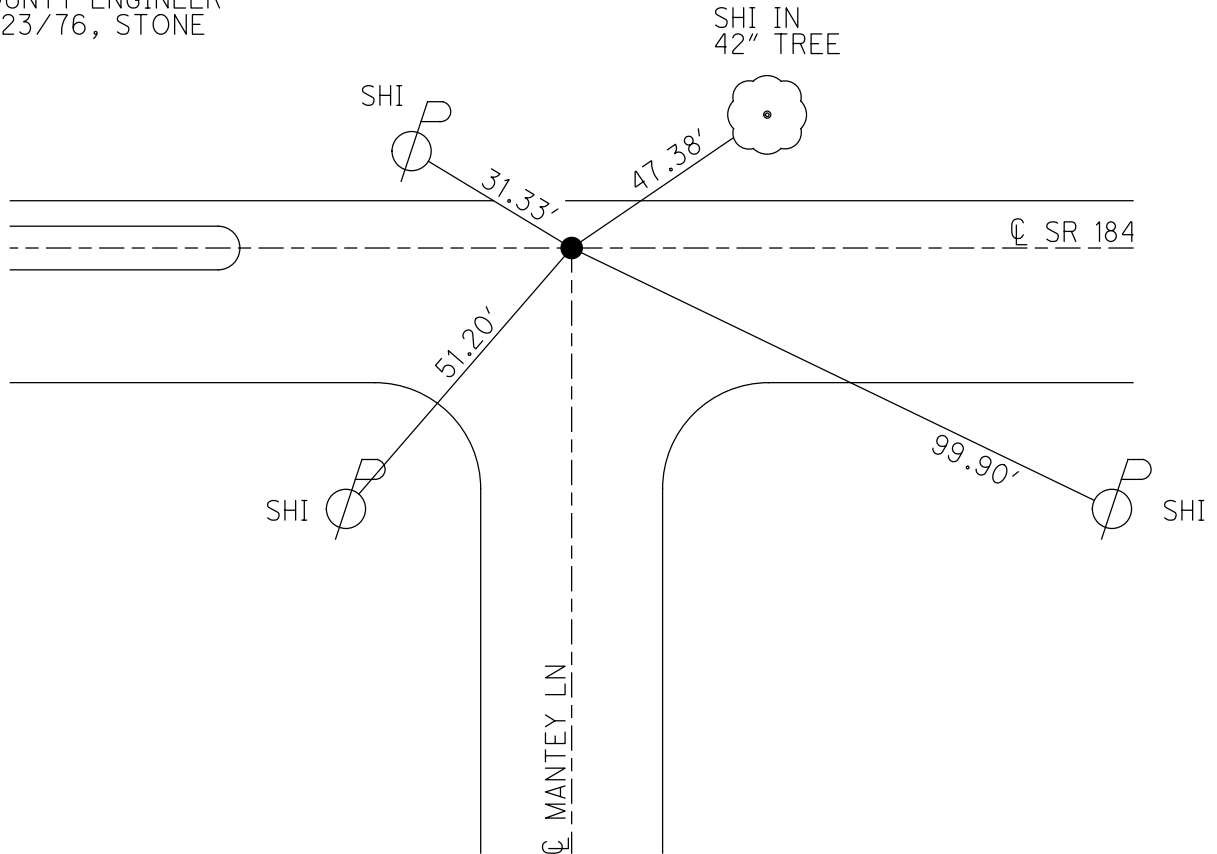
GEOID: \_\_\_\_\_

GRID: NORTHING: \_\_\_\_\_

EASTING: \_\_\_\_\_

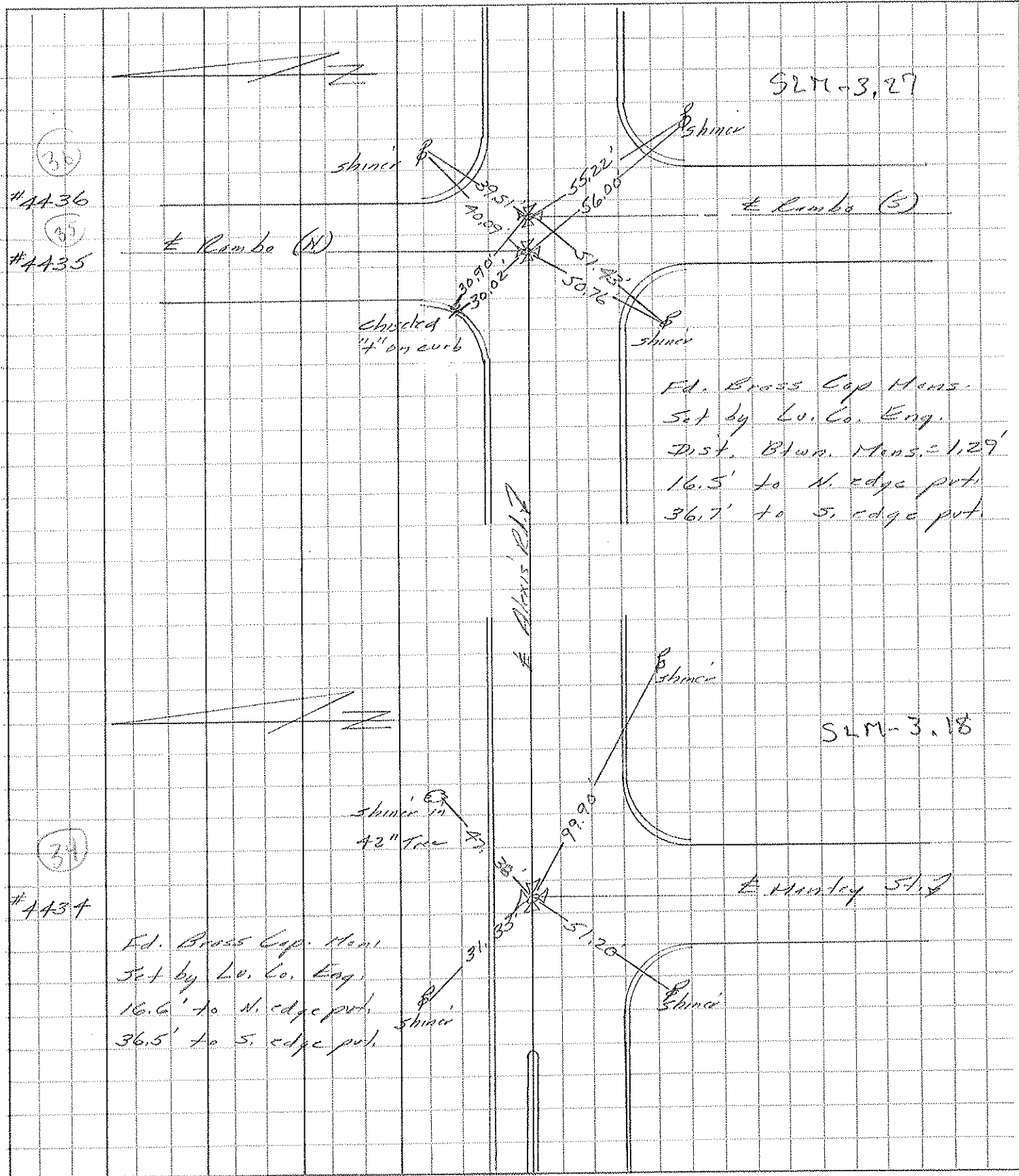


RECORD:  
FD BRASS CAP MON  
SET BY LUCAS  
COUNTY ENGINEER  
2/23/76, STONE



PERSONNEL	TITLE	PERSONNEL	TITLE	COUNTY	DATE
Stone				Lucas	23 Feb. 76
Michalak				S. R. 184	WEATHER Cool
Curtis				SEC. 2.60	TEMP. 28°

DESCRIPTION References to Control Points JOB NO.



(35)  
#4436  
(35)  
#4435

(34)  
#4434

Ed. Brass Cap Mens.  
Set by Lu. Co. Eng.  
16.6' to N. edge pvt.  
36.5' to S. edge pvt.

Ed. Brass Cap Mens.  
Set by Lu. Co. Eng.  
Dist. Btwn. Mens. = 1.29'  
16.5' to N. edge pvt.  
36.7' to S. edge pvt.

SLM-3.27

SLM-3.18

E. Hunsley St.

E. Alton's Rd

E. Hunsley St.

PERSONNEL	TITLE	PERSONNEL	TITLE	COUNTY	DATE	WEATHER	TEMP.
Stone	Notes			Lucas	2 July 68	Warm	75°
Michalek	Tape			S. R. 24-25 Bypass			
Schroeder	Tape			SEC. Alexis Rd.			

DESCRIPTION References to Control Points JOB NO. \_\_\_\_\_  
 LEFT CENTER LINE RIGHT

