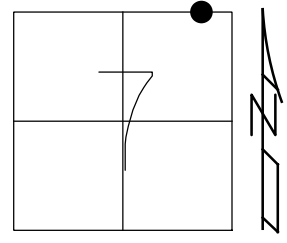


O.D.O.T. DISTRICT 2 SURVEY OFFICE (USE ONLY)

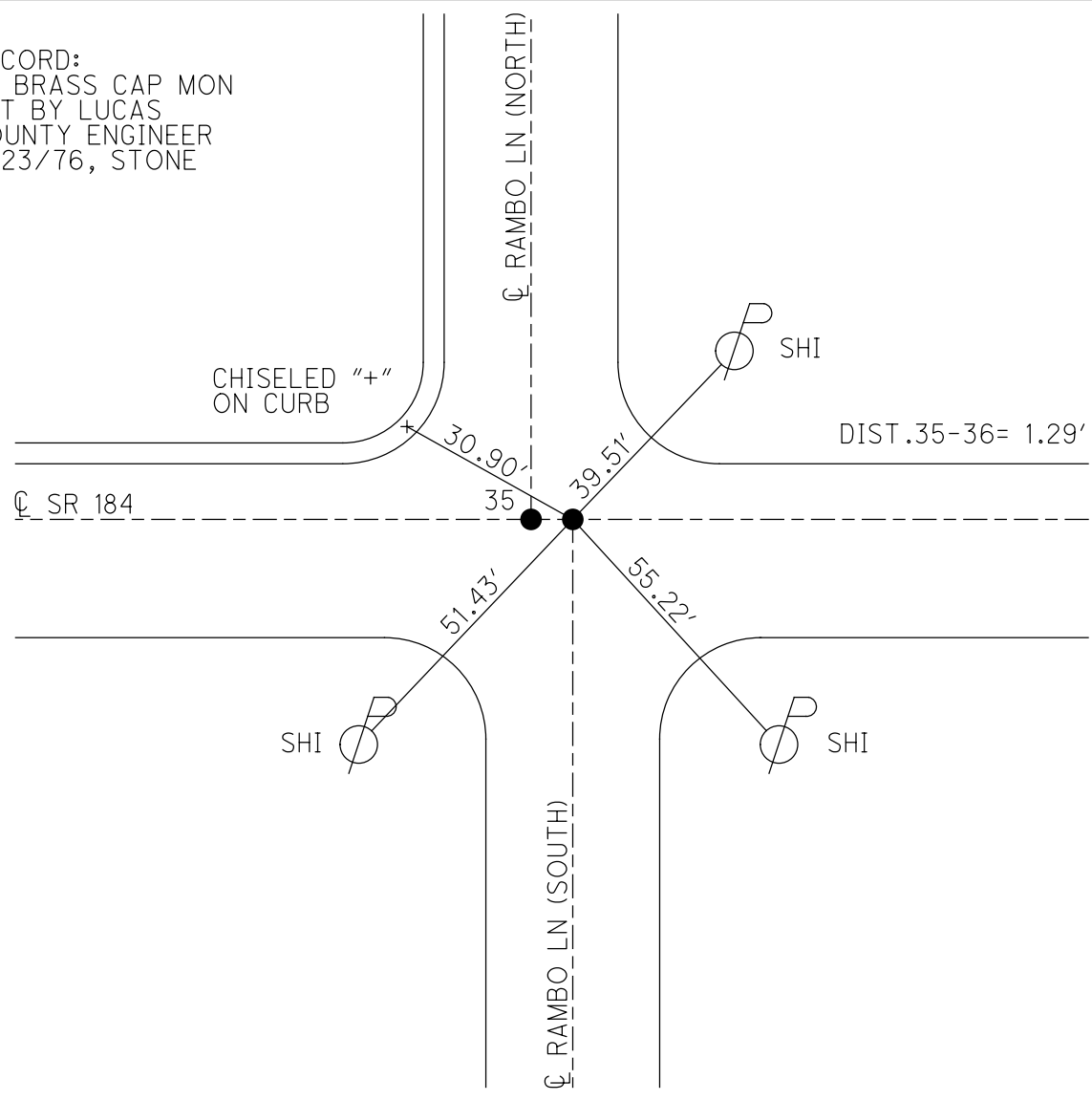
PERSONNEL _____ REFERENCE NO. 36 SHEET 18 OF 58
 NOTES STONE DATE 2/23/76 ROUTE SR 184
 H.C. MICHALAK WEATHER COOL COUNTY LUCAS
 R.C. CURTIS TEMP. 28° TOWNSHIP CITY OF TOLEDO
 DWG BY NIESE PID _____ SECTION 7
 T 9 S R 7 E

TYPE MONUMENT BRASS CAP
 ON SURFACE - ~~BELOW~~ ON
 OFFSET ☉ PAVEMENT _____ LT : RT
16.5' TO LT EDGE PAVEMENT
 STATION: 172+66



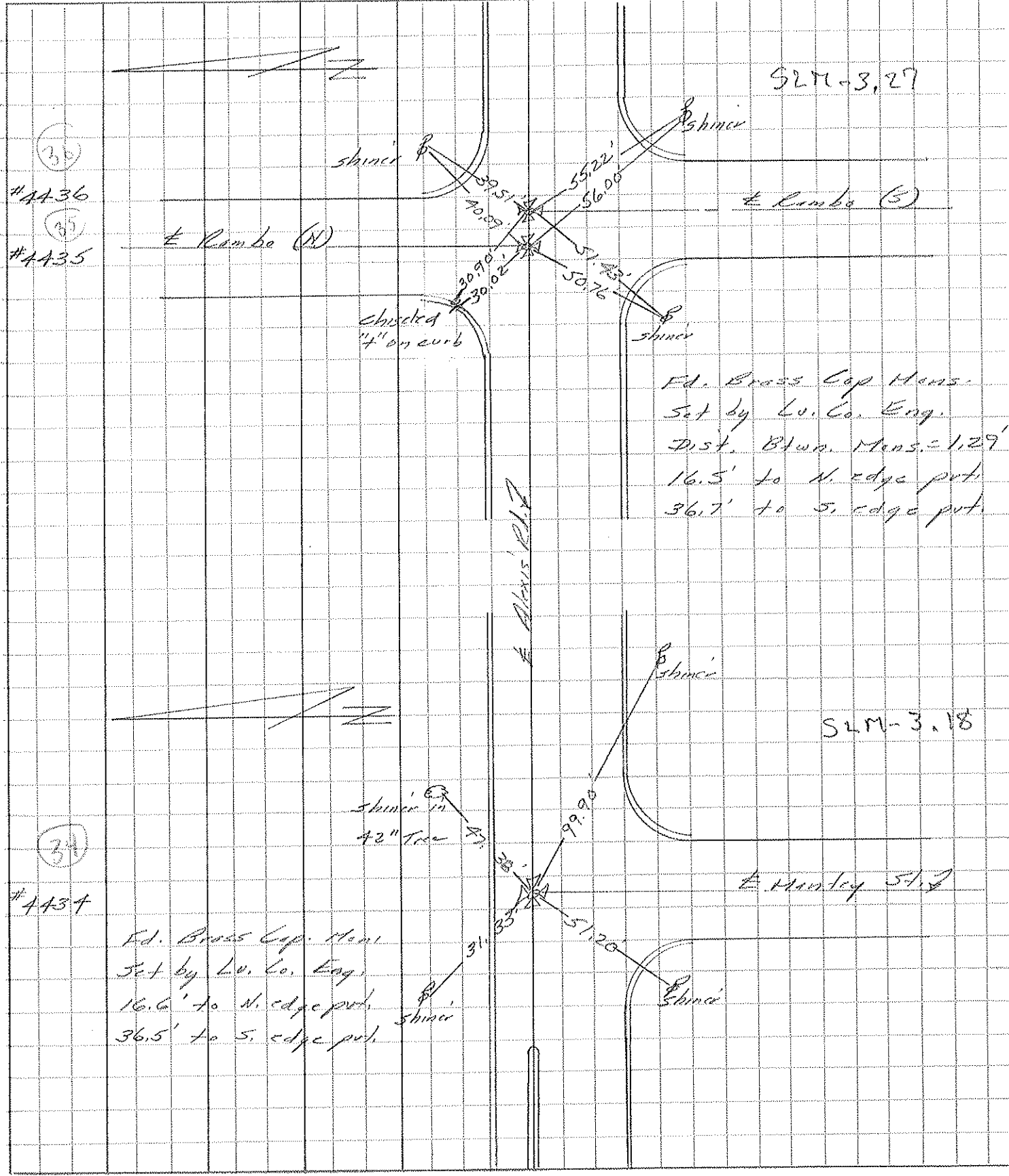
HORZ. DATUM: _____ GEOID: _____
 GRID: NORTHING: _____ EASTING: _____

RECORD:
 FD BRASS CAP MON
 SET BY LUCAS
 COUNTY ENGINEER
 2/23/76, STONE



PERSONNEL	TITLE	PERSONNEL	TITLE	COUNTY	DATE
Stone				Lucas	23 Feb. 76
Michalak				S. R. 184	WEATHER Cool
Curtis				SEC. 2.60	TEMP. 28°

DESCRIPTION References to Control Points JOB NO.



(35)
#4436
(35)
#4435

(34)
#4434

Ed. Brass Cap Mens.
Set by Lu. Co. Eng.
16.6' to N. edge pvt.
36.5' to S. edge pvt.

Ed. Brass Cap Mens.
Set by Lu. Co. Eng.
Dist. Btwn. Mens. = 1.29'
16.5' to N. edge pvt.
36.7' to S. edge pvt.

SLM-3.27

SLM-3.18

E. Huntley 51.7