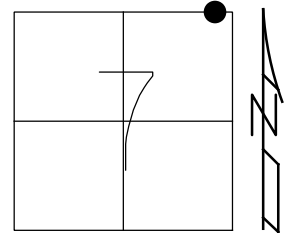


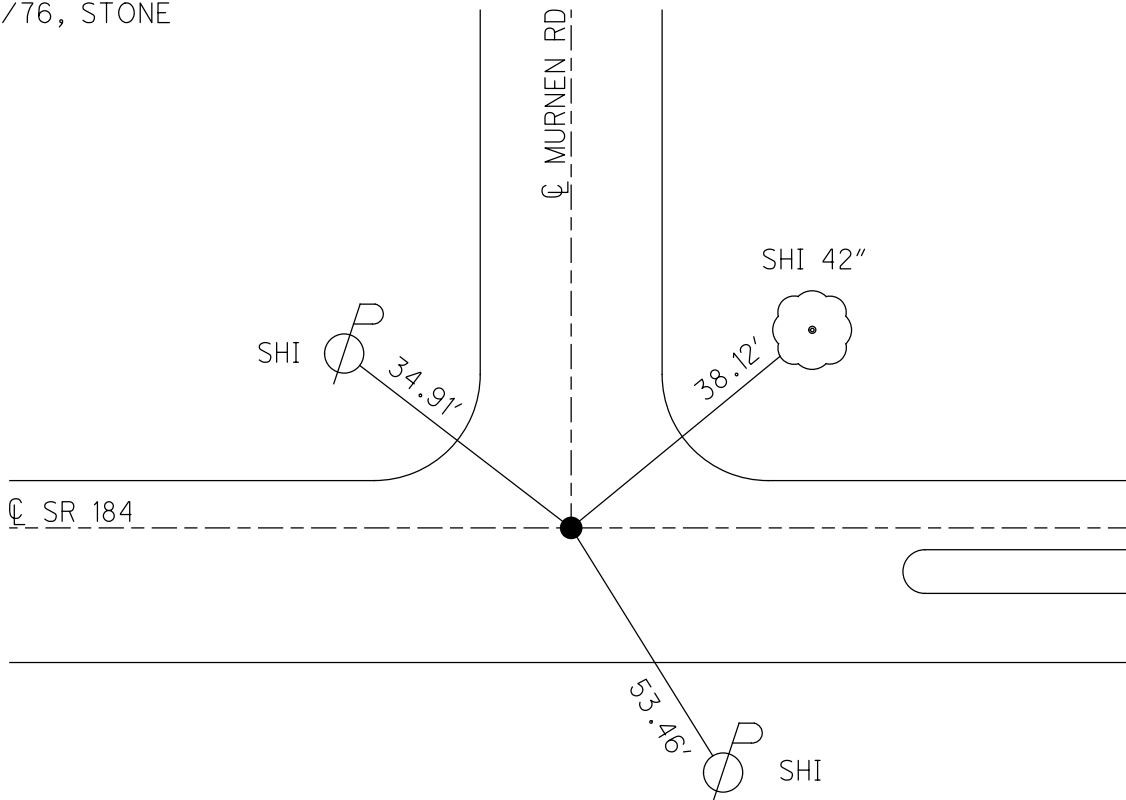
O.D.O.T. DISTRICT 2 SURVEY OFFICE (USE ONLY)

PERSONNEL _____ REFERENCE NO. 37 SHEET 19 OF 58
 NOTES STONE DATE 2/23/76 ROUTE SR 184
 H.C. MICHALAK WEATHER COOL COUNTY LUCAS
 R.C. CURTIS TEMP. 30° TOWNSHIP CITY OF TOLEDO
 SECTION 7
 DWG BY NIESE PID _____ T 9 S R 7 E

TYPE MONUMENT BRASS CAP
 ON SURFACE - ~~BELOW~~ ON
 OFFSET ☉ PAVEMENT ON _____ LT : RT
16.5' TO LT EDGE PAVEMENT
 STATION: 175+82
 HORZ.DATUM: _____ GEOID: _____
 GRID: NORTHING: _____ EASTING: _____

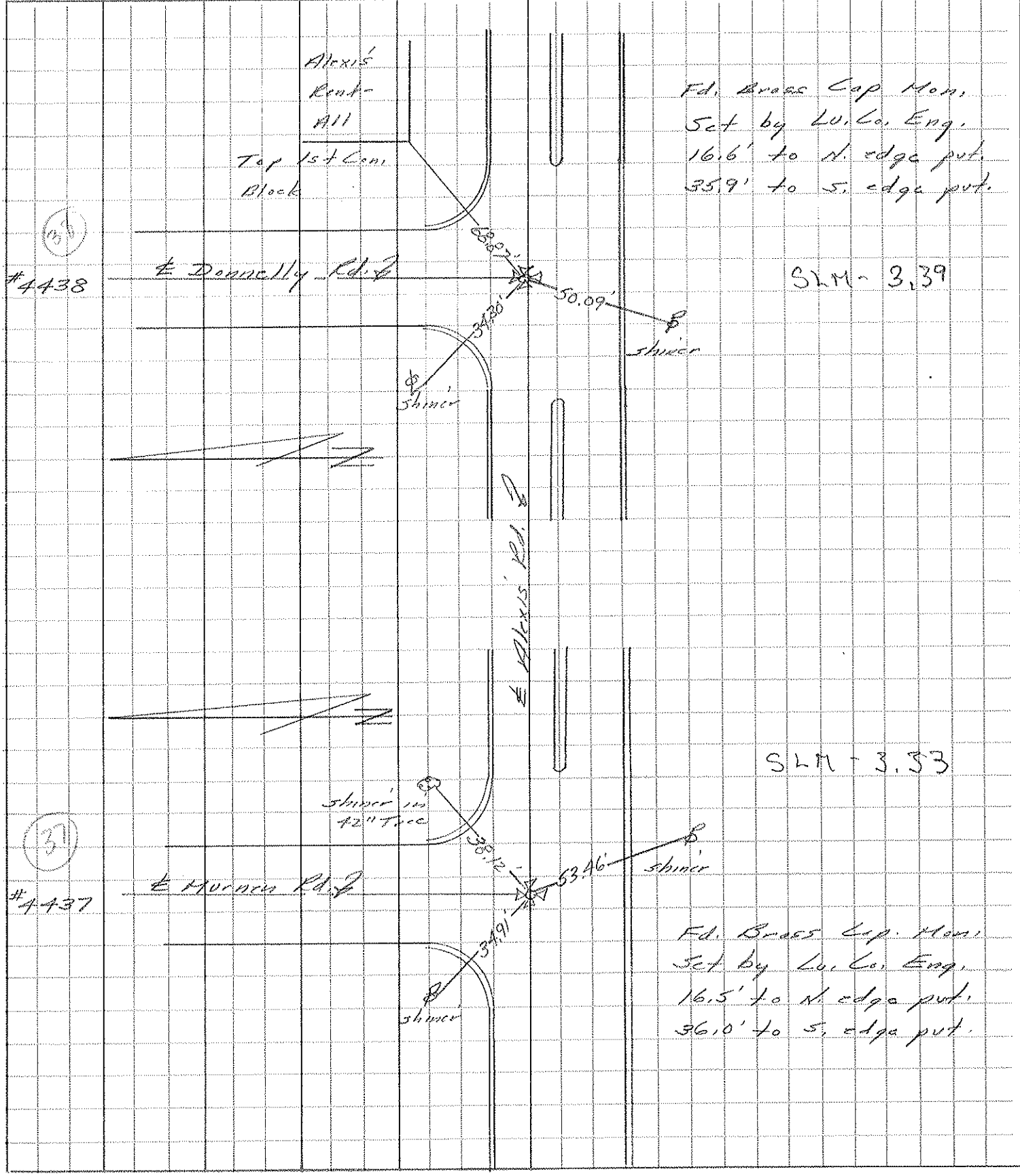


RECORD:
 FD BRASS CAP MON
 SET BY LUCAS
 COUNTY ENGINEER
 2/23/76, STONE



PERSONNEL	TITLE	PERSONNEL	TITLE	COUNTY	DATE	S. R.	WEATHER	SEC.	TEMP.
Stone				LUCAS	23 Feb. 76	187	Cool	E. 90	30°
Michaelak									
Curtis									

DESCRIPTION References to Control Points JOB NO. _____
 LEFT CENTER LINE RIGHT



PERSONNEL	TITLE	PERSONNEL	TITLE	COUNTY	DATE	WEATHER	TEMP.
Stone	Notes			Lucas	2 July 68	Warm	75°
Michalak	Tape			S. R. 29-25 Bypass			
Schrader	Tape			SEC. Alexis Rd.			

DESCRIPTION References to Control Points JOB NO. _____

