

O.D.O.T. DISTRICT 2 SURVEY OFFICE (USE ONLY)

PERSONNEL

REFERENCE NO. 38

SHEET 20 OF 58

NOTES STONE DATE 2/23/76

ROUTE SR 184

H.C. MICHALAK WEATHER COOL

COUNTY LUCAS

R.C. CURTIS TEMP. 30°

TOWNSHIP CITY OF TOLEDO

SECTION 7

DWG BY NIESE PID \_\_\_\_\_

T 9 S R 7 E

TYPE MONUMENT BRASS CAP

ON SURFACE - ~~BELOW~~ ON

OFFSET Q PAVEMENT ON LT : RT

16.6' TO LT EDGE PAVEMENT

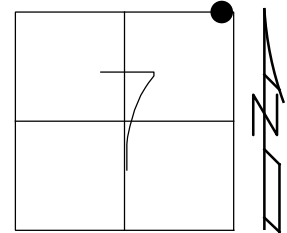
STATION: 178+99

HORIZ.DATUM: \_\_\_\_\_

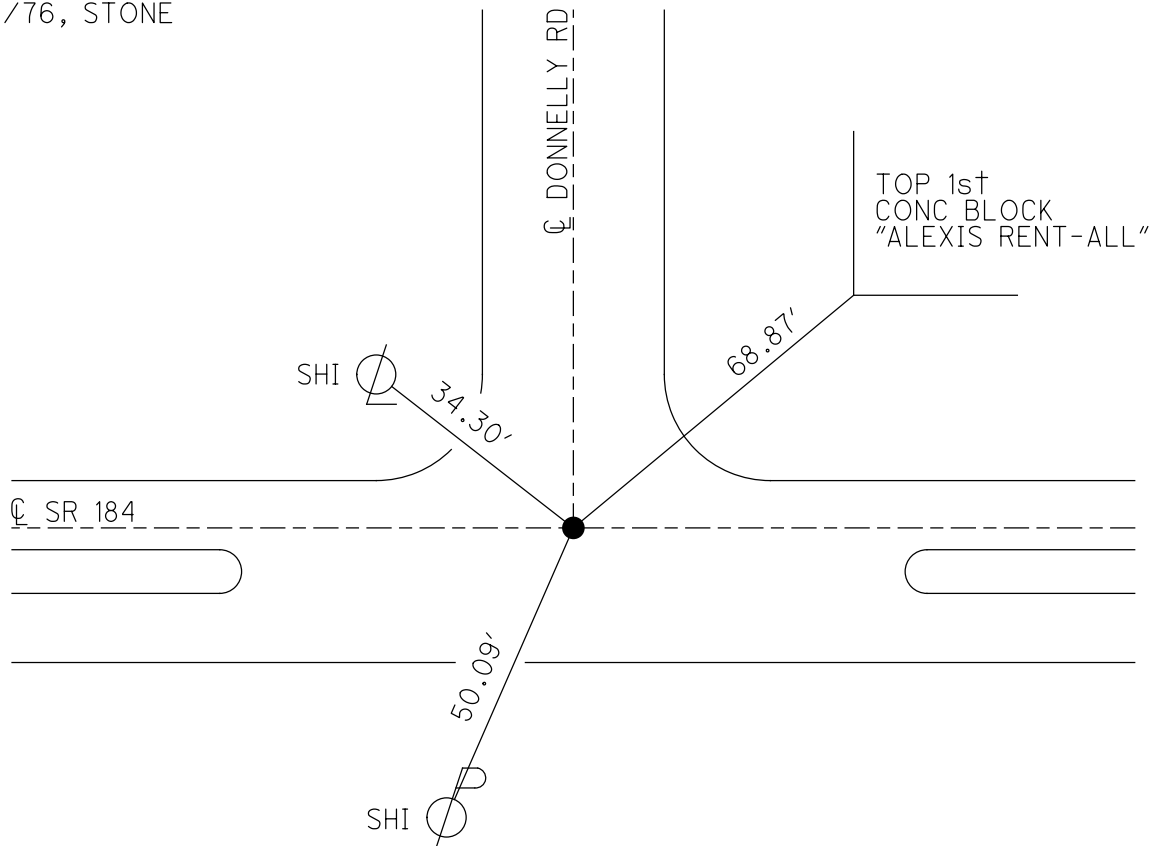
GEOID: \_\_\_\_\_

GRID: NORTHING: \_\_\_\_\_

EASTING: \_\_\_\_\_

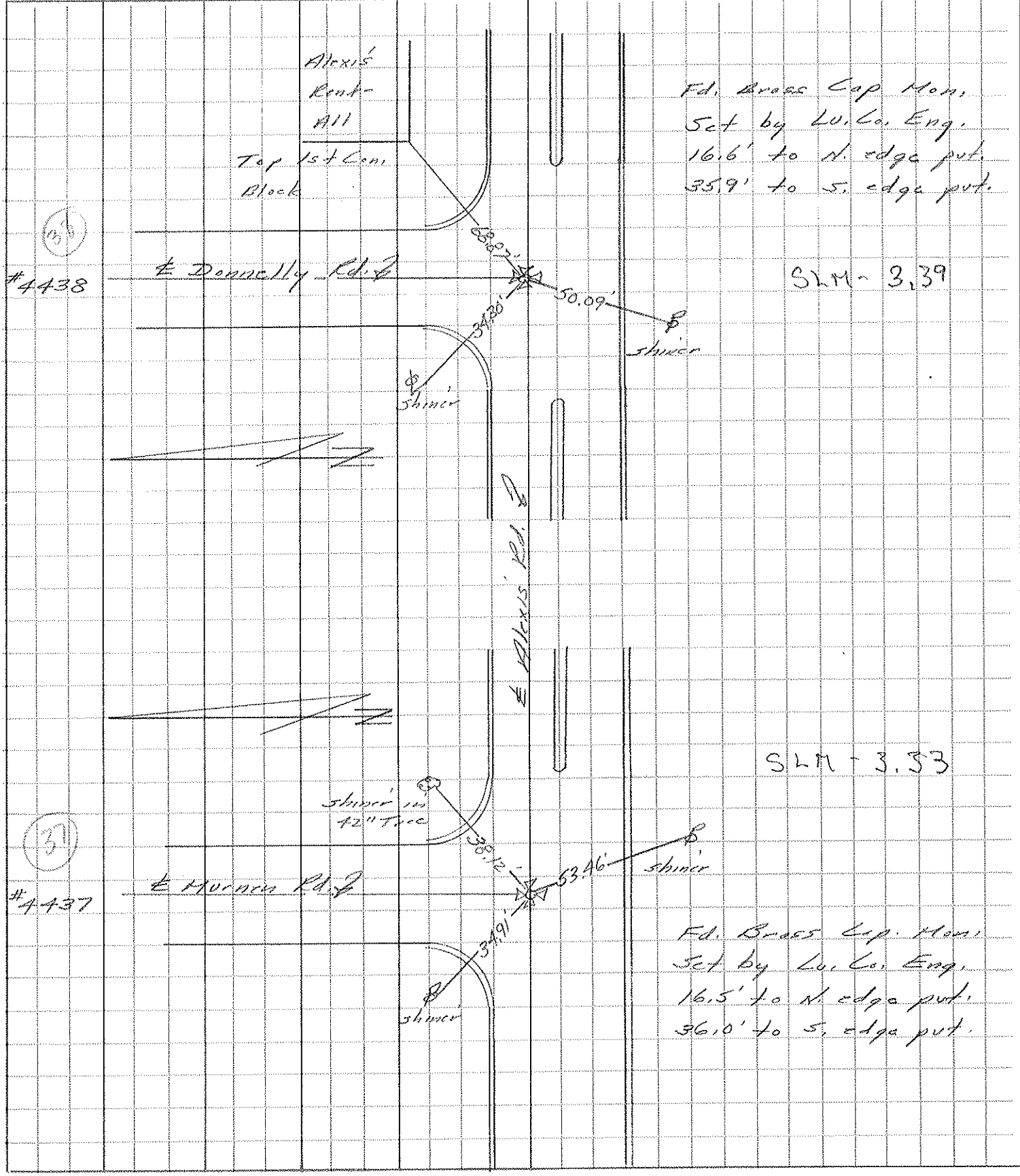


RECORD:  
FD BRASS CAP MON  
SET BY LUCAS  
COUNTY ENGINEER  
2/23/76, STONE



PERSONNEL	TITLE	PERSONNEL	TITLE	COUNTY	DATE	S. R.	WEATHER	SEC.	TEMP.
Stone				LUCAS	23 Feb. 76	187	Cool	E. 90	30°
Michaelak									
Curtis									

DESCRIPTION References to Control Points JOB NO. \_\_\_\_\_  
 LEFT CENTER LINE RIGHT



PERSONNEL	TITLE	PERSONNEL	TITLE	COUNTY	DATE	WEATHER	TEMP.
Stone	Notes			Lucas	2 July 68	Warm	75°
Michalak	Tape			S. R. 29-25 Bypass			
Schrader	Tape			SEC. Alexis Rd.			

DESCRIPTION References to Control Points JOB NO. \_\_\_\_\_

