

O.D.O.T. DISTRICT 2 SURVEY OFFICE (USE ONLY)

PERSONNEL \_\_\_\_\_

REFERENCE NO. 39

SHEET 21 OF 58

NOTES CITY

DATE 1/10/90

ROUTE SR 184

H.C. OF

WEATHER \_\_\_\_\_

COUNTY LUCAS

R.C. TOLEDO

TEMP. \_\_\_\_\_

TOWNSHIP CITY OF TOLEDO

SECTION 8

DWG BY NIESE PID \_\_\_\_\_

T 9 S R 7 E

TYPE MONUMENT MONBOX W/ IPIN

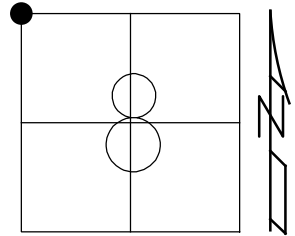
ON SURFACE - ~~BELOW~~ ON

OFFSET  $\text{\textcircled{C}}$  PAVEMENT ON \_\_\_\_\_ LT : RT  
TO \_\_\_\_\_ EDGE PAVEMENT

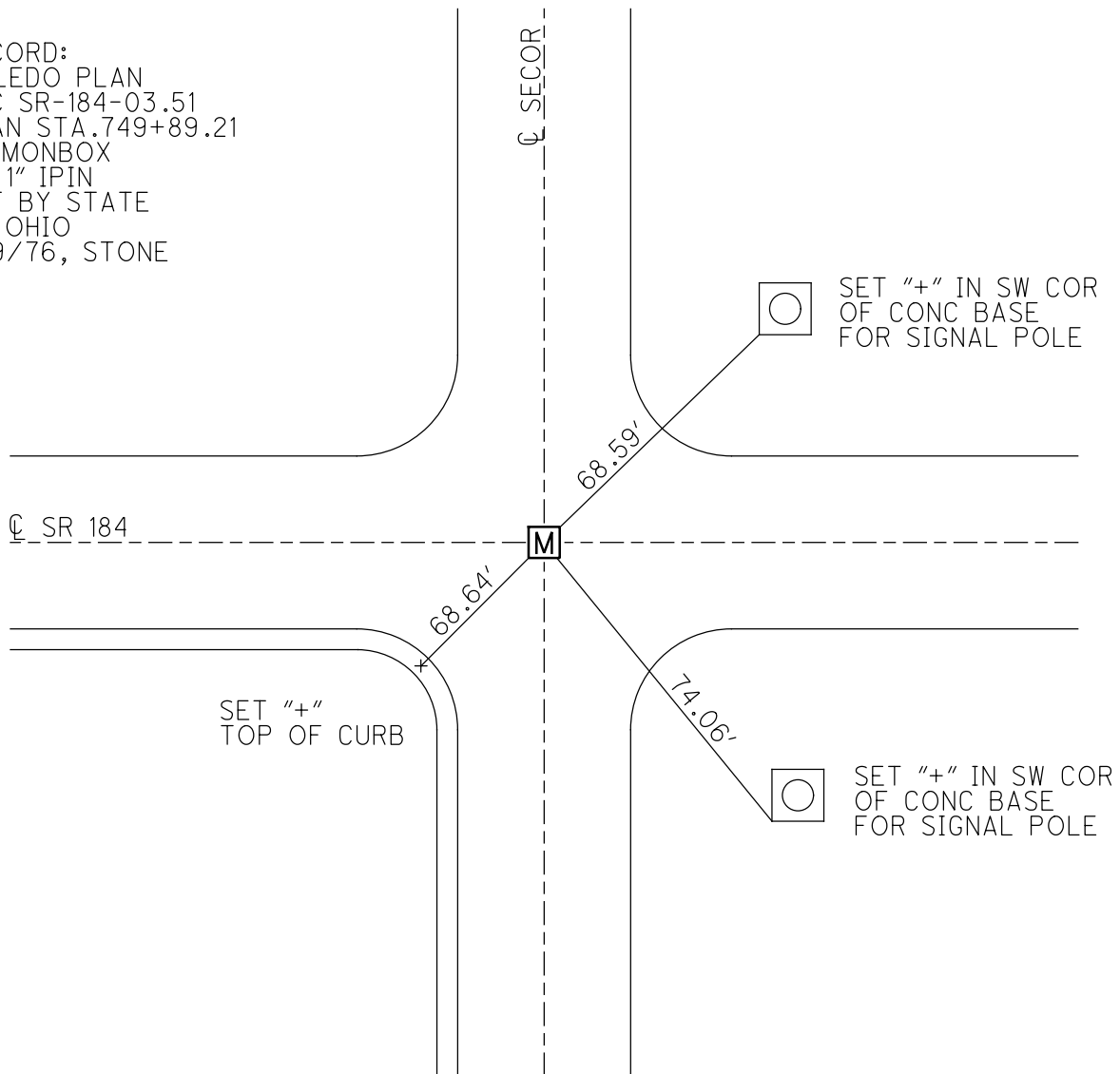
STATION: 185+32.8

HORIZ.DATUM: \_\_\_\_\_ GEOID: \_\_\_\_\_

GRID: NORTHING: \_\_\_\_\_ EASTING: \_\_\_\_\_



RECORD:  
 TOLEDO PLAN  
 LUC SR-184-03.51  
 PLAN STA. 749+89.21  
 FD MONBOX  
 W/ 1" IPIN  
 SET BY STATE  
 OF OHIO  
 3/9/76, STONE



# O.D.O.T. DISTRICT 2 SURVEY OFFICE

PERSONNEL \_\_\_\_\_

REFERENCE NO. 39

SHEET 1 OF 5

NOTES CITY

H.C. of

R.C. TOLEDO

DATE 1-10-92

WEATHER \_\_\_\_\_

TEMP. \_\_\_\_\_

ROUTE 184

COUNTY LUCAS

TOWNSHIP WASHINGTON

SECTION 8

T 2 S R 7 E

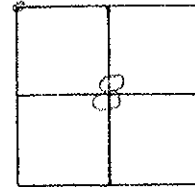
TYPE MONUMENT I. PIN IN MAN BOX

ON SURFACE - BELOW \_\_\_\_\_

LEFT -  $\odot$  PAV'T. - RIGHT \_\_\_\_\_

\_\_\_\_\_ TO \_\_\_\_\_ EDGE PAVEMENT

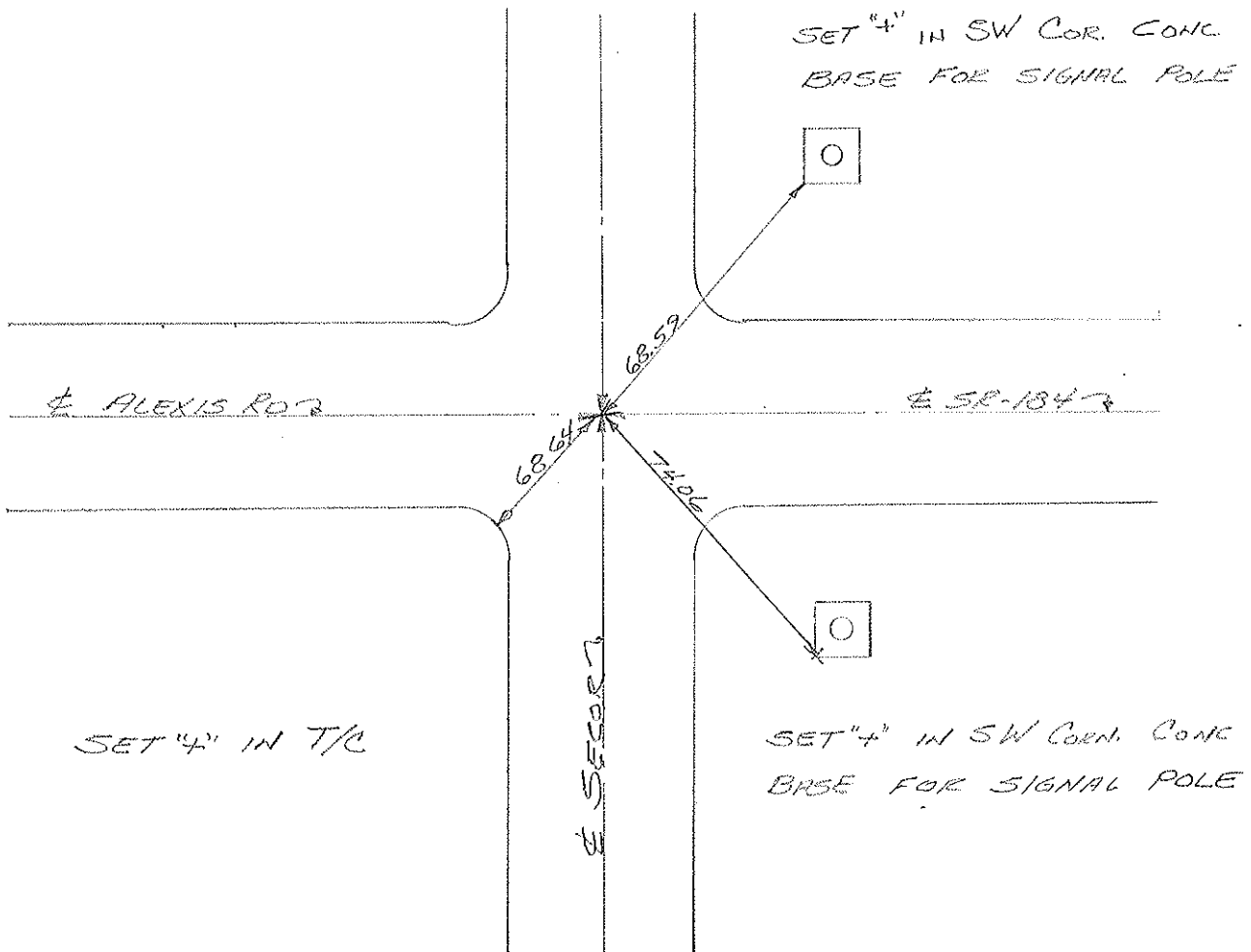
S.L.M. 185+32.8



DRAWN BY Wm LUCE

TOLEDO PLAN Luc-SR-184-03.51

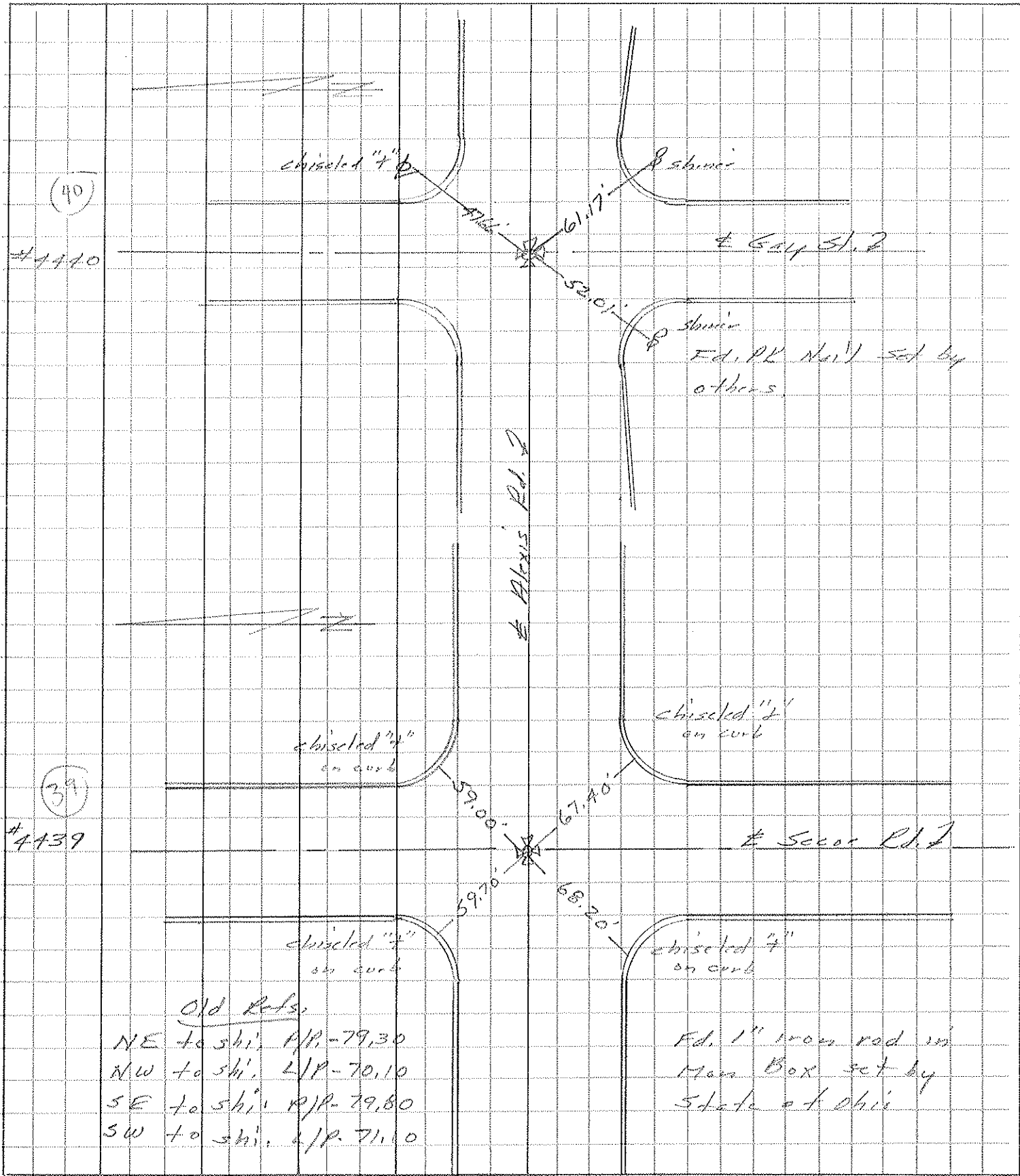
PLAN STA: 749+89.21



PERSONNEL	TITLE	PERSONNEL	TITLE
Stone			
Michalek			
Gurdus			

COUNTY Lucas DATE 9 Mar. 76  
 S. R. 184 WEATHER Clear  
 SEC. \_\_\_\_\_ TEMP. 38°

DESCRIPTION References to Control Points JOB NO. \_\_\_\_\_  
 LEFT CENTER LINE RIGHT



Old Refs:  
 NE to shi. H/P. -79.30  
 NW to shi. L/P. -70.10  
 SE to shi. R/P. -79.80  
 SW to shi. L/P. -71.10

Fd. 1" iron rod in  
 Man Box set by  
 State of Ohio

PERSONNEL	TITLE	PERSONNEL	TITLE	COUNTY	DATE	WEATHER	TEMP.
Stone	Notes			Lucas	2 July 68	Warm	78°
Michalak	Tape			S. R. 24-25 Bypass			
Schroeder	Tape			SEC. Alexis Rd.			

DESCRIPTION References to Central Points JOB NO. \_\_\_\_\_

