

O.D.O.T. DISTRICT 2 SURVEY OFFICE (USE ONLY)

PERSONNEL

REFERENCE NO. 40

SHEET 22 OF 58

NOTES STONE

DATE 3/9/76

ROUTE SR 184

H.C. MICHALAK

WEATHER CLEAR

COUNTY LUCAS

R.C. CURTIS

TEMP. 38°

TOWNSHIP CITY OF TOLEDO

SECTION 8

DWG BY NIESE PID \_\_\_\_\_

T 9 S R 7 E

TYPE MONUMENT P.K. NAIL

ON SURFACE - ~~BELOW~~ ON

OFFSET ☉ PAVEMENT ON \_\_\_\_\_ LT : RT

\_\_\_\_\_ TO \_\_\_\_\_ EDGE PAVEMENT

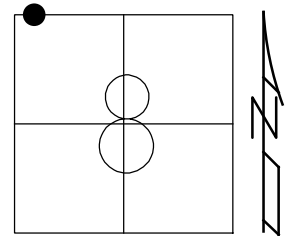
STATION: 189+55.2

HORZ. DATUM: \_\_\_\_\_

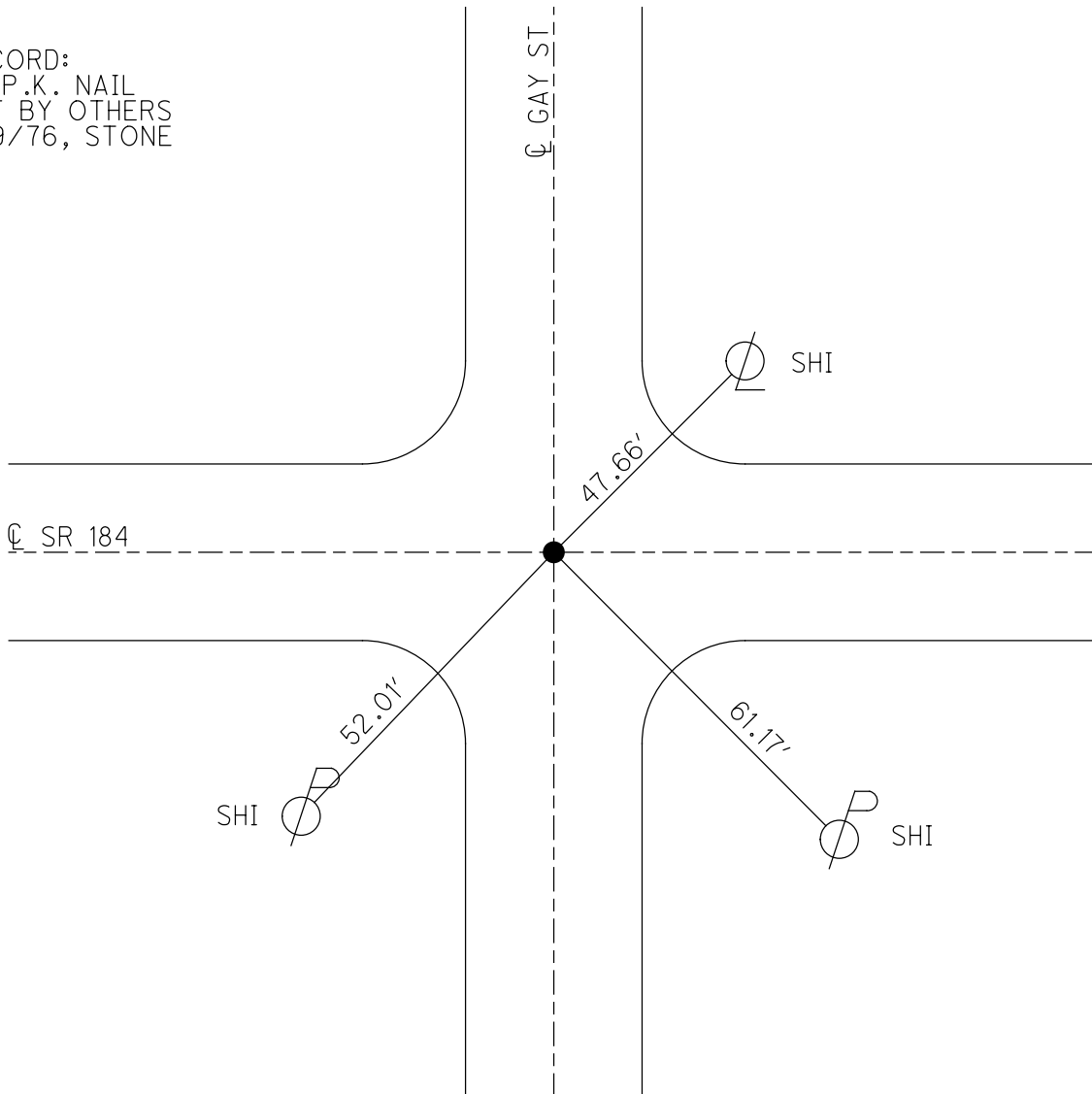
GEOID: \_\_\_\_\_

GRID: NORTHING: \_\_\_\_\_

EASTING: \_\_\_\_\_



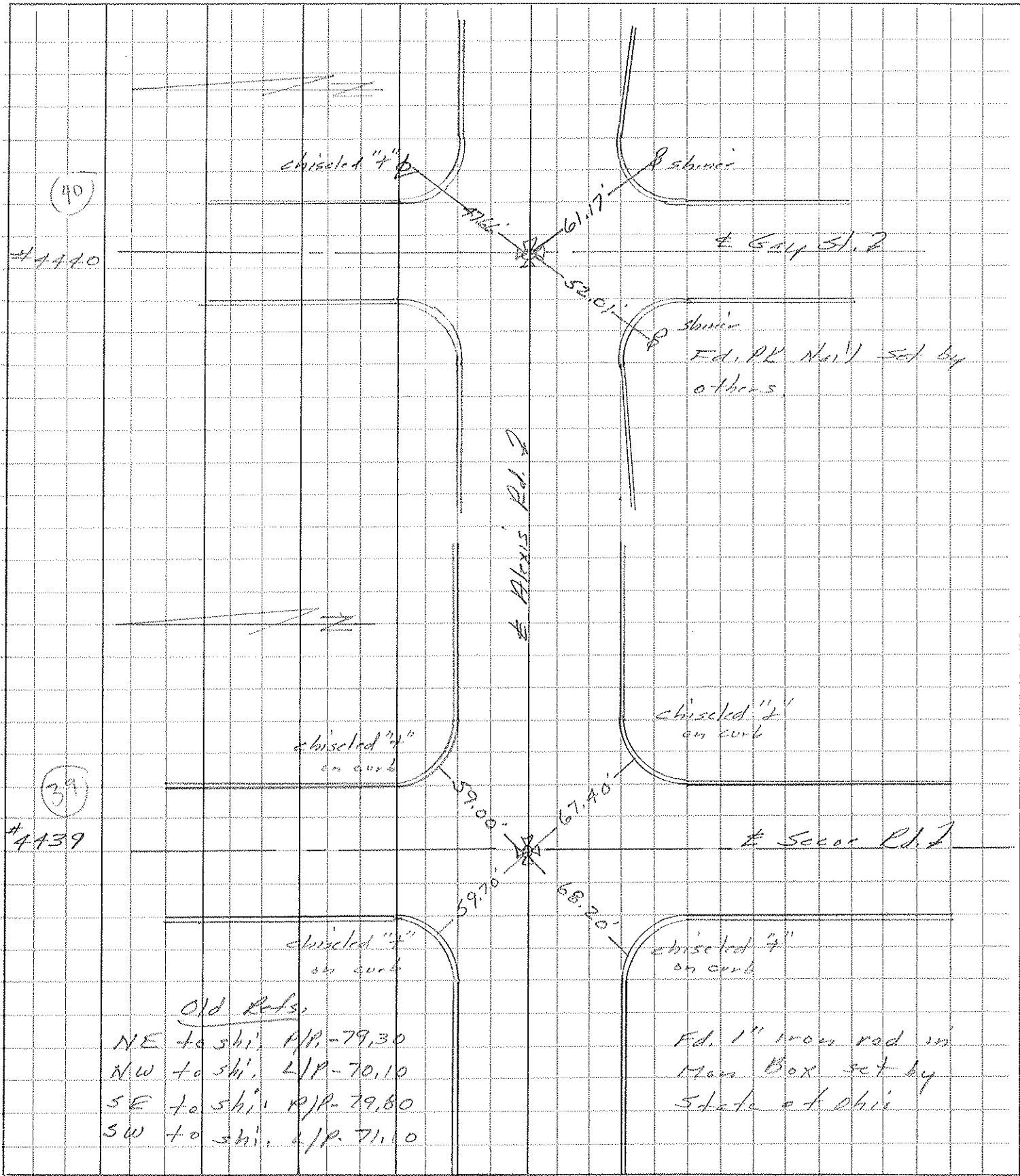
RECORD:  
FD P.K. NAIL  
SET BY OTHERS  
3/9/76, STONE



PERSONNEL	TITLE	PERSONNEL	TITLE
Stone			
Michalek			
Gurdus			

COUNTY Lucas DATE 9 Mar. 76  
 S. R. 184 WEATHER Clear  
 SEC. \_\_\_\_\_ TEMP. 38°

DESCRIPTION References to Control Points JOB NO. \_\_\_\_\_  
 LEFT CENTER LINE RIGHT



Old Refs:  
 NE to shi. H/P. -79.30  
 NW to shi. L/P. -70.10  
 SE to shi. R/P. -79.80  
 SW to shi. L/P. -71.10

Fd. 1" iron rod in  
 Man Box set by  
 State of Ohio

PERSONNEL	TITLE	PERSONNEL	TITLE	COUNTY	DATE	WEATHER	TEMP.
Stone	Notes			Lucas	2 July 68	Warm	78°
Michalak	Tape			S. R. 24-25 Bypass			
Schroeder	Tape			SEC. Alexis Rd.			

DESCRIPTION References to Central Points JOB NO.

