

O.D.O.T. DISTRICT 2 SURVEY OFFICE (USE ONLY)

PERSONNEL \_\_\_\_\_

REFERENCE NO. 44

SHEET 26 OF 58

NOTES CITY

DATE 1/13/92

ROUTE SR 184

H.C. OF

WEATHER \_\_\_\_\_

COUNTY LUCAS

R.C. TOLEDO

TEMP. \_\_\_\_\_

TOWNSHIP CITY OF TOLEDO

SECTION 8

DWG BY NIESE

PID \_\_\_\_\_

T 9 S R 7 E

TYPE MONUMENT MONBOX W/ IPIN

ON SURFACE - ~~BELOW~~ ON

OFFSET Q PAVEMENT ON LT : RT

\_\_\_\_\_ TO \_\_\_\_\_ EDGE PAVEMENT

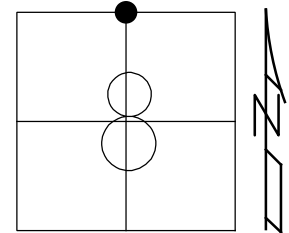
STATION: 211+66.54

HORZ. DATUM: \_\_\_\_\_

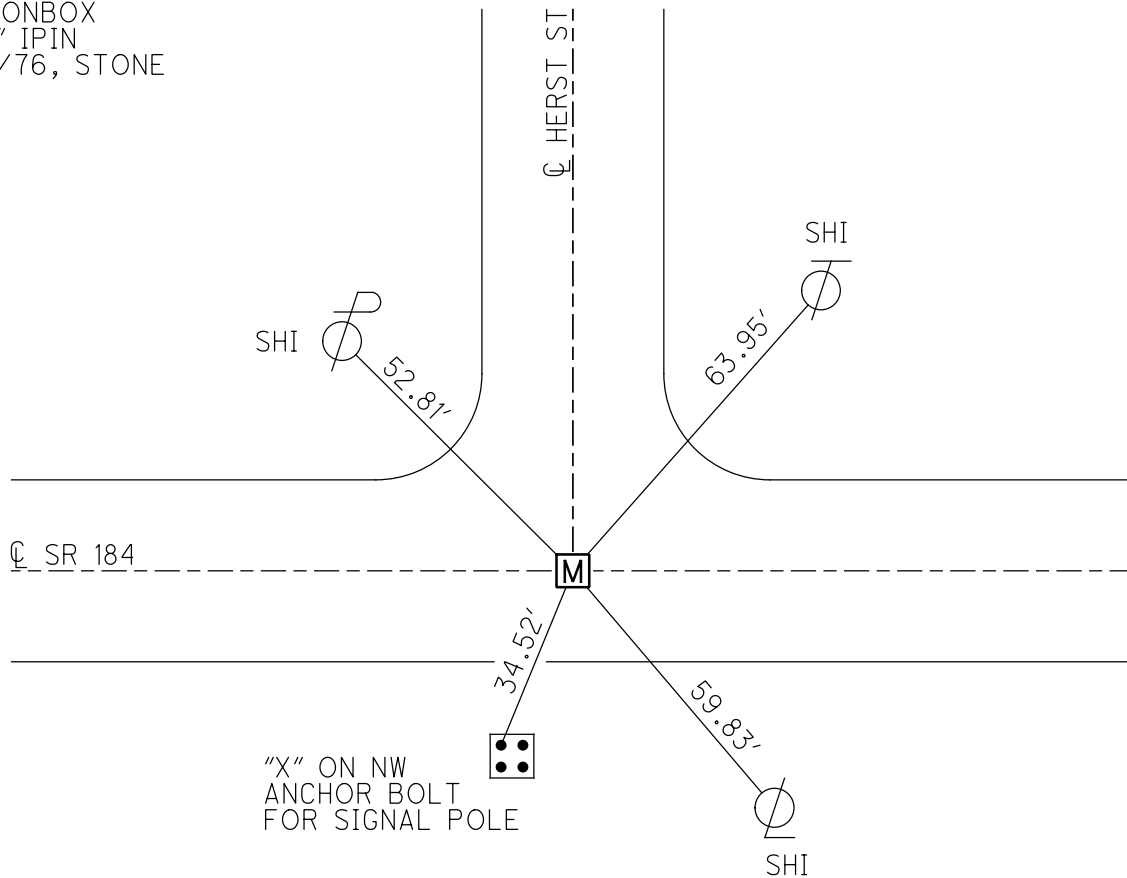
GEOID: \_\_\_\_\_

GRID: NORTHING: \_\_\_\_\_

EASTING: \_\_\_\_\_



RECORD:  
 TOLEDO PLAN  
 LUC-SR 184-03.51  
 PLAN STA 776+22.95  
 FD MONBOX  
 W/ 1" IPIN  
 5/12/76, STONE



O.D.O.T. DISTRICT 2 SURVEY OFFICE

PERSONNEL \_\_\_\_\_

REFERENCE NO. 44

SHEET 2 OF 5

NOTES City

H.C. of

R.C. TOLEDO

DATE 1-13-92

WEATHER \_\_\_\_\_

TEMP. \_\_\_\_\_

ROUTE 184

COUNTY LUCAS

TOWNSHIP WASHINGTON

SECTION 8

T 9 S R 7 E

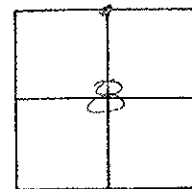
TYPE MONUMENT I. PIN IN MON BOX

ON SURFACE - BELOW SURFACE

LEFT - Q PAV'T. - RIGHT \_\_\_\_\_

\_\_\_\_\_ TO \_\_\_\_\_ EDGE PAVEMENT

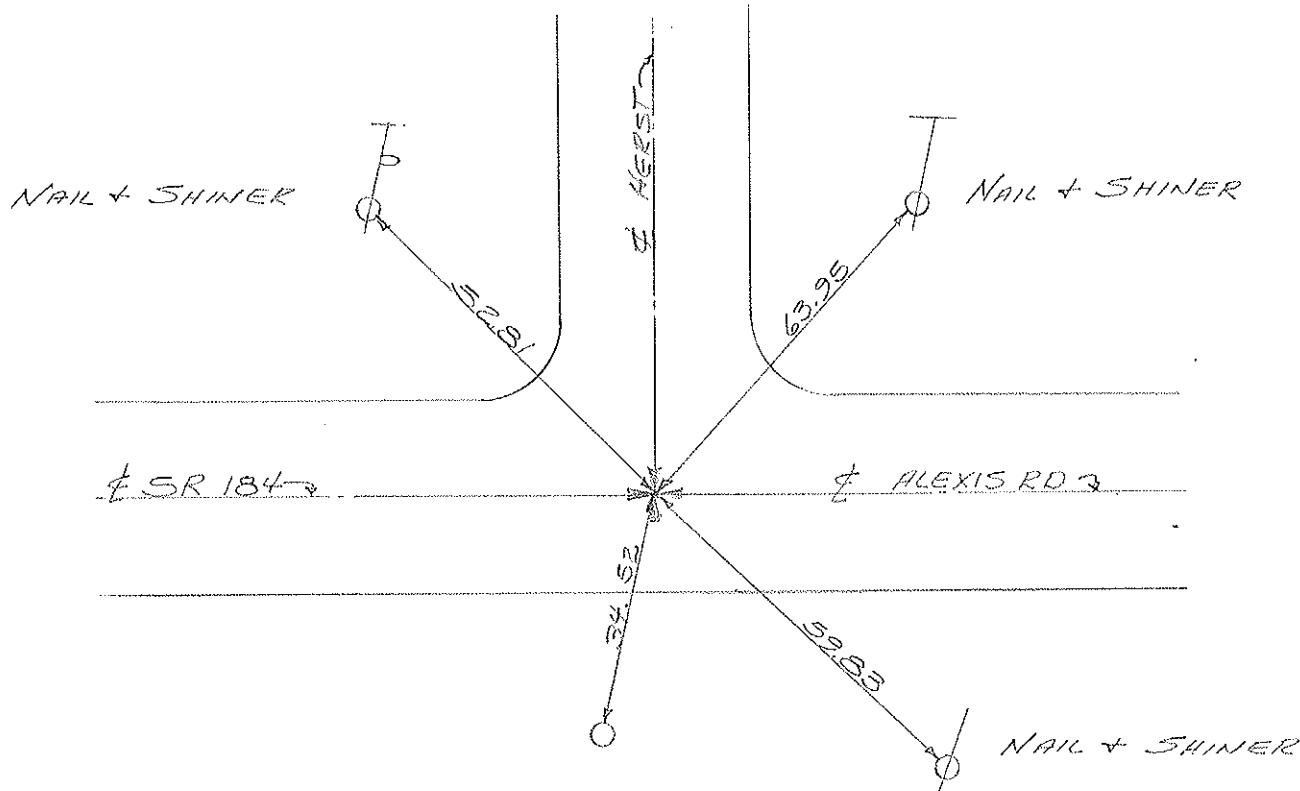
S.L.M. 211+66.54



DRAWN BY Wm LUCE

TOLEDO PLAN Luc-SR-184-0351

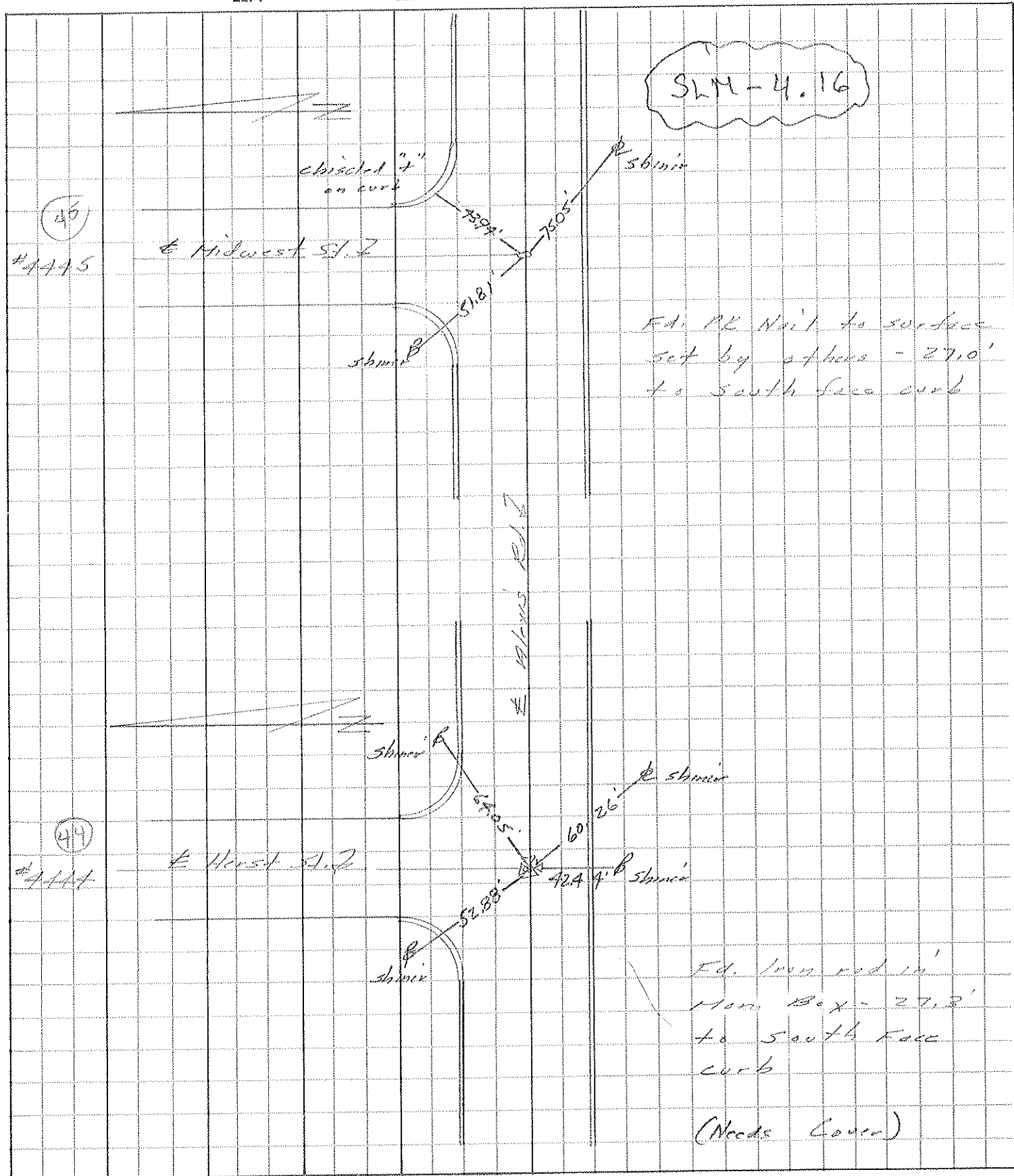
PLAN STA = 776+22.95



"X" ON NW ANCHOR  
BOLT FOR SIGNAL POLE

PERSONNEL	TITLE	PERSONNEL	TITLE	COUNTY	DATE
Stone		Ernata		Lucas	12 May 76
Michael				S. R. 184	WEATHER Clear
Curtis				SEC.	TEMP. 52°
Newser					

DESCRIPTION References to Control Points JOB NO. \_\_\_\_\_



PERSONNEL	TITLE	PERSONNEL	TITLE	COUNTY	DATE	WEATHER	TEMP.
Stone	Notes			Lucas	3 July 68	Cool	58°
Michalak	Tape			S. R. 2425 Bypass			
Schroder	Tape			SEC. Alexis Rd.			

DESCRIPTION References to Control Points JOB NO. \_\_\_\_\_  
 LEFT CENTER LINE RIGHT

