

O.D.O.T. DISTRICT 2 SURVEY OFFICE (USE ONLY)

PERSONNEL \_\_\_\_\_

REFERENCE NO. 64

SHEET 47 OF 58

NOTES STONE DATE 9/3/76  
 H.C. NEUSER WEATHER FAIR  
 R.C. GRANATA TEMP. 60°

ROUTE SR 184  
 COUNTY LUCAS  
 TOWNSHIP CITY OF TOLEDO  
 SECTION 7  
 T 9 S R 8 E

DWG BY NIESE PID \_\_\_\_\_

TYPE MONUMENT MONBOX

ON SURFACE - ~~BELOW~~ ON

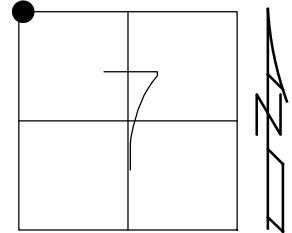
OFFSET CL PAVEMENT ON LT : RT

27.8' TO RT EDGE PAVEMENT

STATION: 1062+24.47

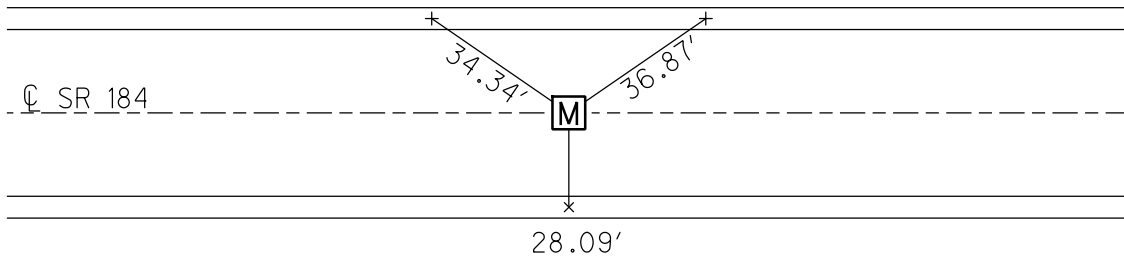
HORZ.DATUM: \_\_\_\_\_ GEOID: \_\_\_\_\_

GRID: NORTHING: \_\_\_\_\_ EASTING: \_\_\_\_\_

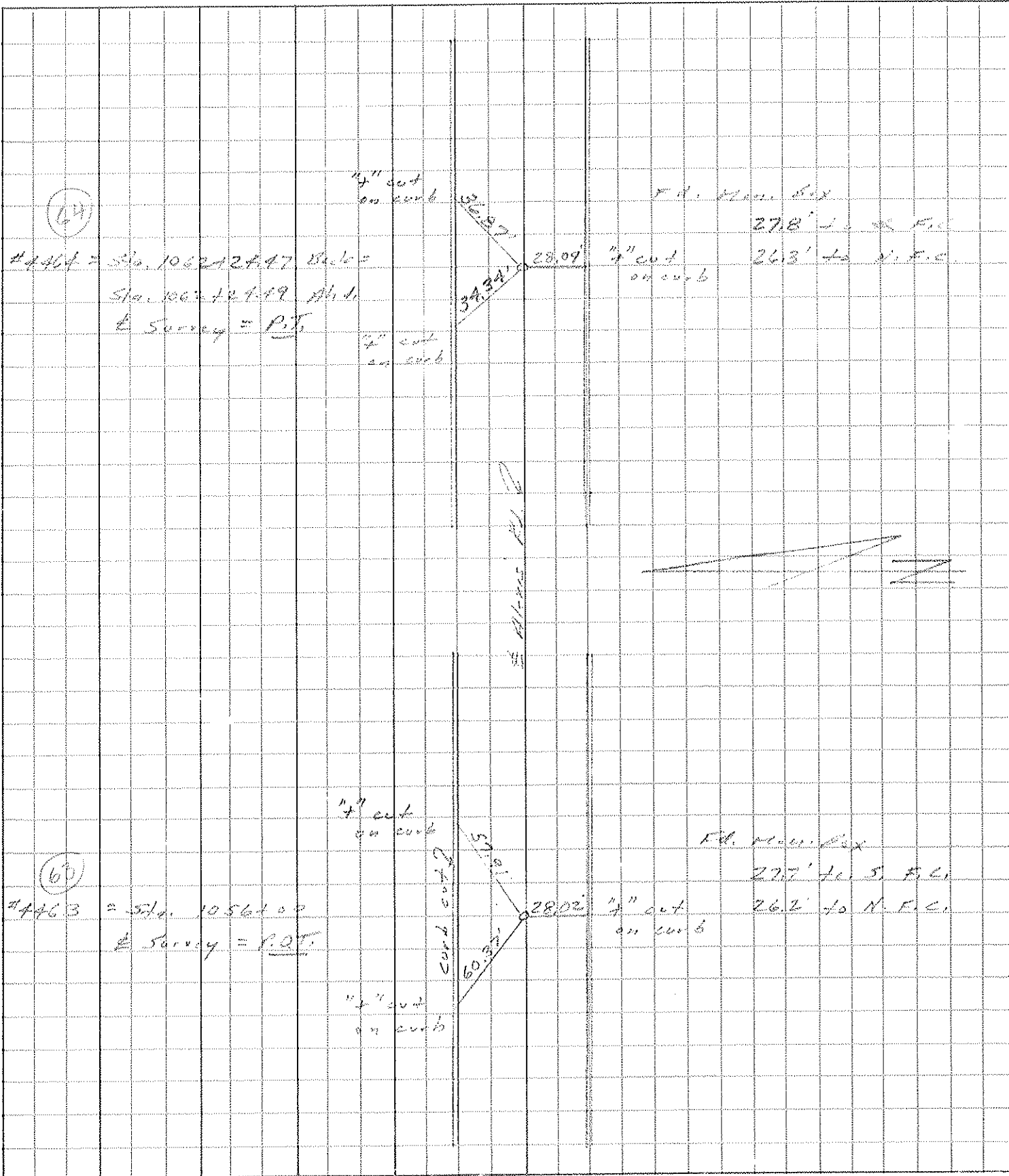


RECORD: P.T.  
 FD MONBOX  
 9/2/76, STONE

"+" CUTS  
 ON CURBS



PERSONNEL	TITLE	PERSONNEL	TITLE	COUNTY	DATE
<u>Stave</u>				<u>Lucas</u>	<u>3 Sept. 76</u>
<u>Keusey</u>				S. R.	WEATHER
<u>Curdis</u>				<u>187</u>	<u>Fair</u>
				SEC.	TEMP.
				<u>Alexis Rd. (New)</u>	<u>60°</u>
DESCRIPTION	<u>References to Control Points</u>			JOB NO.	
	LEFT	CENTER LINE	RIGHT		



(54)

#4464 = Sta. 1062+24.47 Bk. 5  
 Sta. 1062+24.19 Ab. 1  
 E. Survey = P.T.

1/2" cut on curb  
 1/2" cut on curb

F.D. Man. Box  
 27.8' to S.F.C.  
 26.3' to N.F.C.

(60)

#4463 = Sta. 1056+00  
 E. Survey = P.O.T.

1/2" cut on curb  
 1/2" cut on curb

F.D. Man. Box  
 27.7' to S.F.C.  
 26.2' to N.F.C.