

O.D.O.T. DISTRICT 2 SURVEY OFFICE (USE ONLY)

PERSONNEL

REFERENCE NO. 66

SHEET 49 OF 58

NOTES NIESH

DATE 9/13/23

ROUTE SR 184

H.C. NIESH

WEATHER FAIR

COUNTY LUCAS

R.C. AUBLE

TEMP. 51°

TOWNSHIP CITY OF TOLEDO

DWG BY RHOADES PID 101327

SECTION 7

T 9 S R 8 E

TYPE MONUMENT MONBOX W/1" IPIN

ON SURFACE - ~~BELOW~~ ON

OFFSET C PAVEMENT ON LT : RT

32.3' TO RT EDGE PAVEMENT

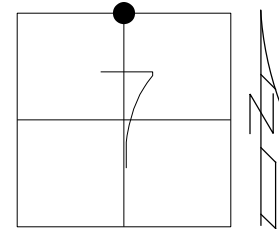
STATION: 1087+20.09

HORZ.DATUM: NAD83 2011

GEOID: NAVD88 2012A

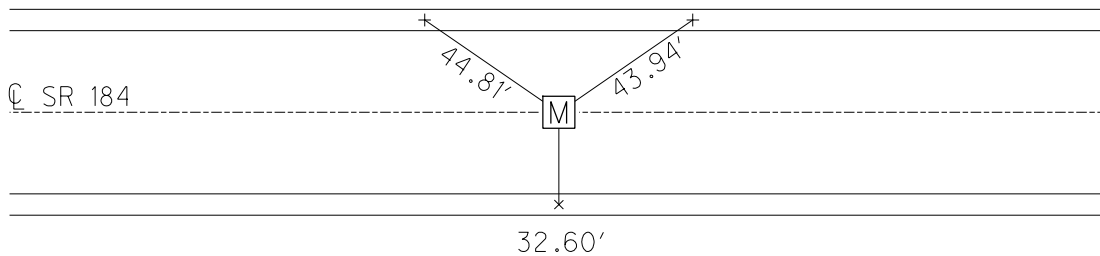
GRID: NORTHING: 750746.096

EASTING: 1690482.335



RECORD:
FD MONBOX
9/3/76, STONE
FD MONBOX W/1" IPIN
REF66
2/15/22,
9/13/23, TDN

"+" CUTS
ON CURBS
(REC)



O.D.O.T. DISTRICT 2 SURVEY OFFICE (USE ONLY)

PERSONNEL _____

REFERENCE NO. 66

SHEET 49 OF 58

NOTES STONE

DATE 9/3/76

ROUTE SR 184

H.C. NEUSER

WEATHER FAIR

COUNTY LUCAS

R.C. CURTIS

TEMP. 65°

TOWNSHIP CITY OF TOLEDO

SECTION 7

DWG BY NIESE PID _____

T 9 S R 8 E

TYPE MONUMENT MONBOX

ON SURFACE - ~~BELOW~~ ON

OFFSET ☉ PAVEMENT ON _____ LT : RT

32.3' TO RT EDGE PAVEMENT

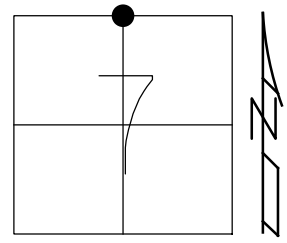
STATION: 1087+20.09

HORZ.DATUM: _____

GEOID: _____

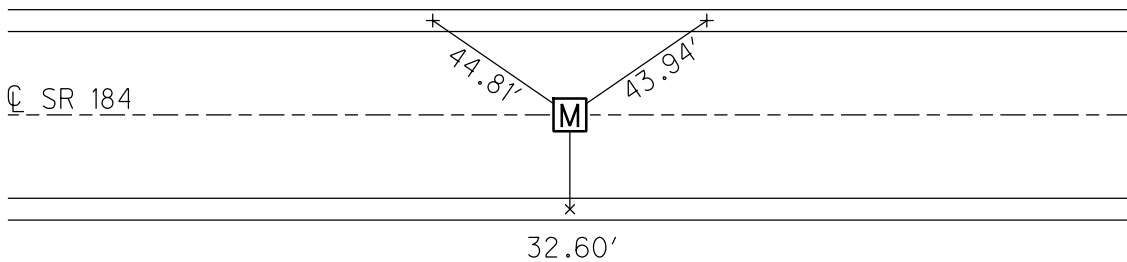
GRID: NORTHING: _____

EASTING: _____

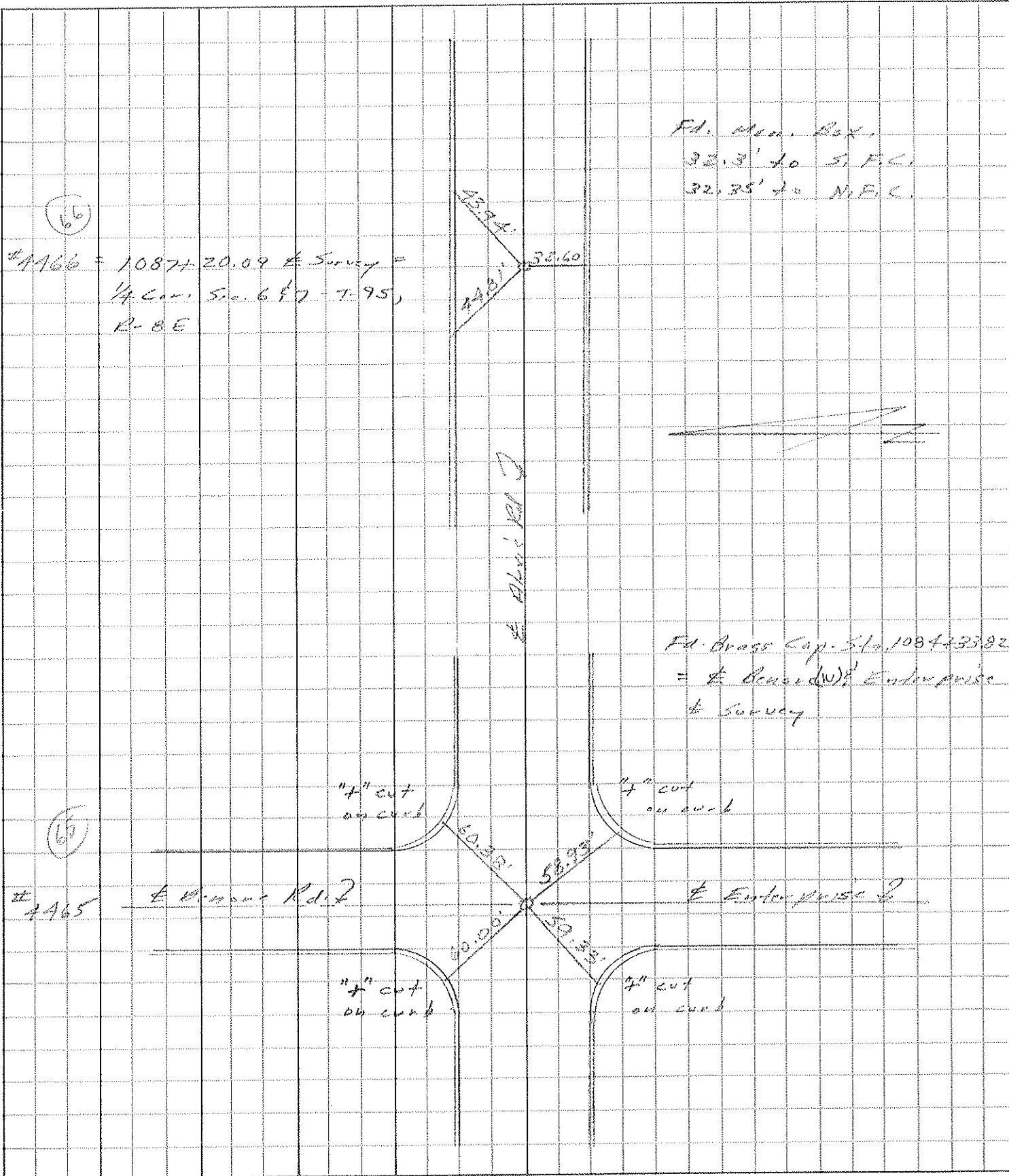


RECORD:
FD MONBOX
9/3/76, STONE

"+" CUTS
ON CURBS



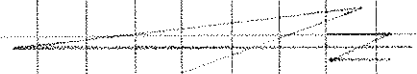
PERSONNEL	TITLE	PERSONNEL	TITLE	COUNTY	DATE	S. R.	WEATHER	TEMP.	JOB NO.
Staver				Lucas	3 Sep. 76	184	Fair	63°	
Neuser									
Gurtis									
DESCRIPTION				References to Control Points				JOB NO.	
LEFT		CENTER LINE		RIGHT					



(66)

#1166 = 10874-20.09 E Survey =
 1/4 Cor. S. 68° 7' - T. 95,
 R. 8 E

Fd. Man. Box,
 32.3' to S.F.C.,
 32.35' to N.F.C.



(65)

#1465

E. Alexis Rd. 2

Fd. Brass Cap. S. 1084-33.82
 = E. Enterprise Rd. E. Survey

E. Enterprise Rd.

7" cut
on curb

7" cut
on curb

7" cut
on curb

7" cut
on curb