

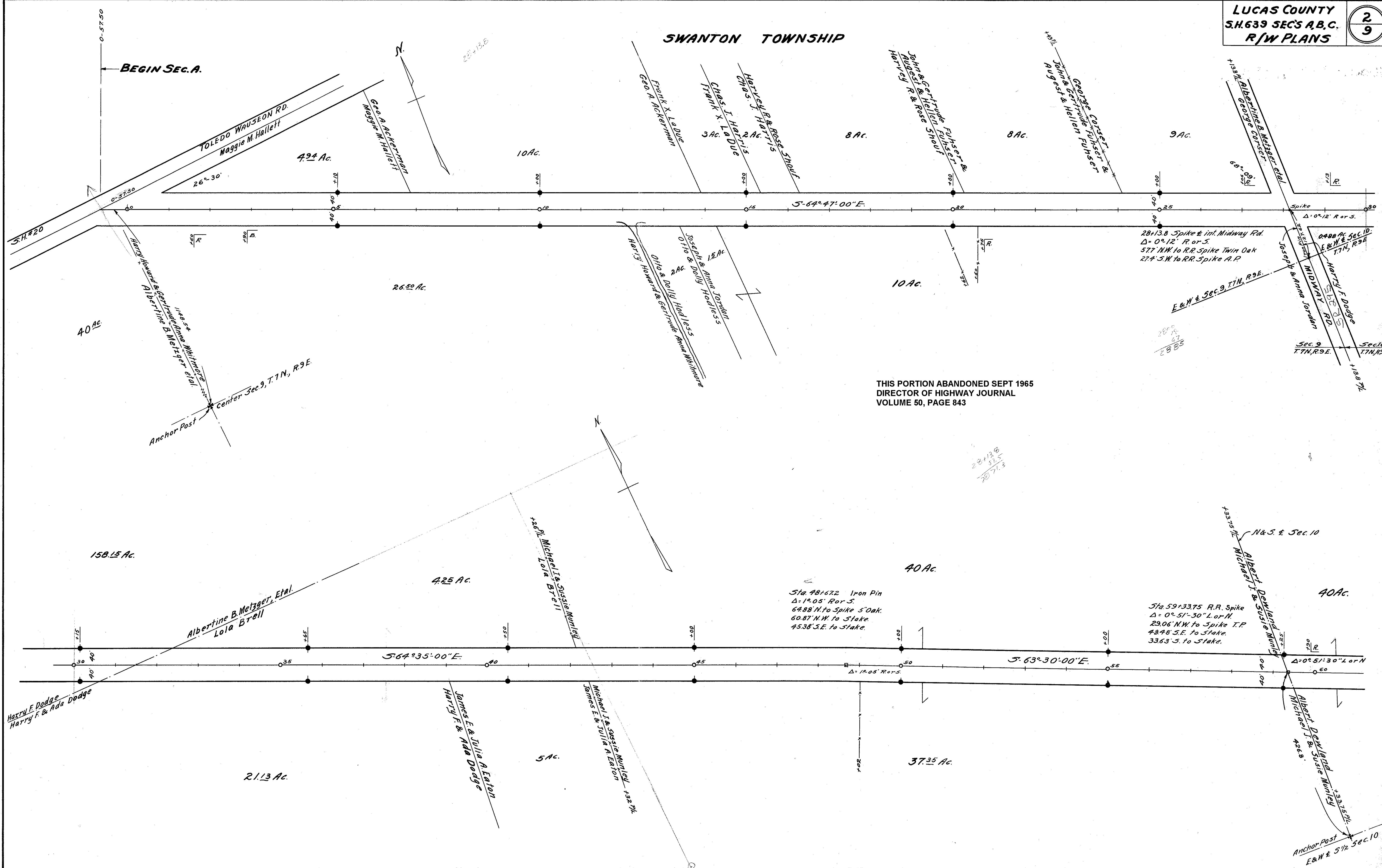
Scanned
JUNE 1997

STATE OF OHIO
DEPARTMENT OF HIGHWAYS
RIGHT OF WAY PLANS
MAUMEE WESTERN
S.H.639 SEC'S A.B.C.
LUCAS COUNTY
SWANTON & MONCLOVA TOWNSHIPS & MAUMEE VILLAGE
1932 80' R/W.

R 5204 2 C-35

SWANTON TOWNSHIP

BEGIN SEC. A.

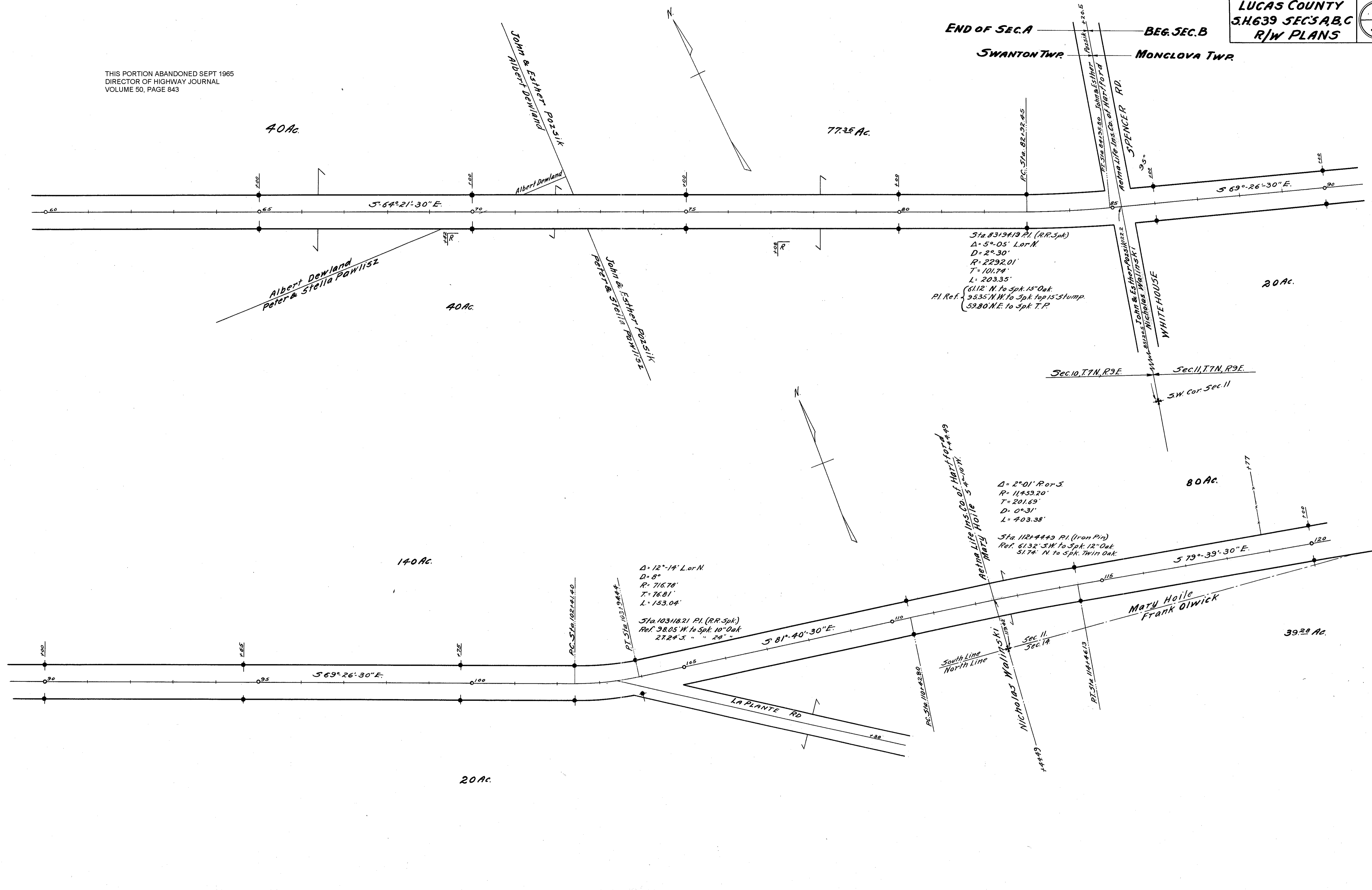


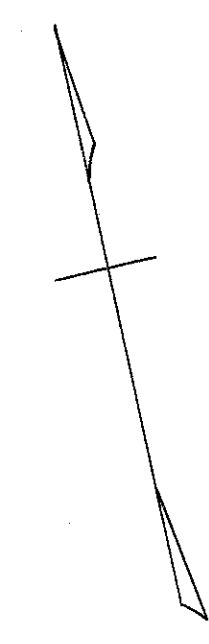
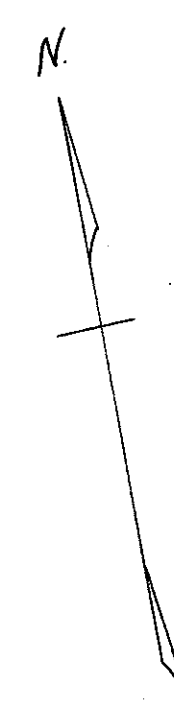
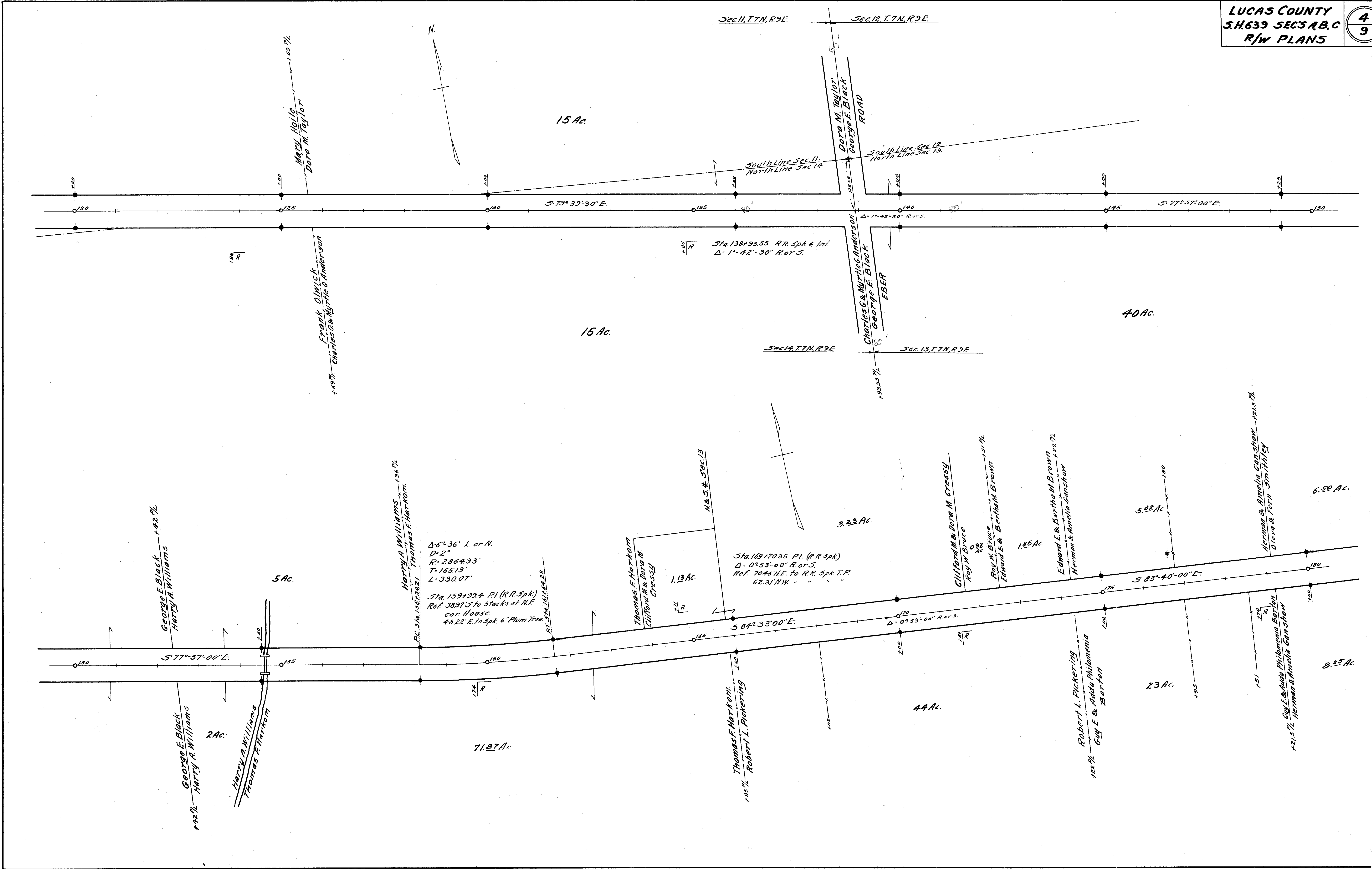
THIS PORTION ABANDONED SEPT 1965
DIRECTOR OF HIGHWAY JOURNAL
VOLUME 50, PAGE 843

Sta 48+672 Iron Pin
Δ = 1° 05' R or S.
68.88 N. to Spike S Oak.
60.87 N.W. to Stake.
45.38 S.E. to Stake.

Sta 59+33.75 R.R. Spike
Δ = 0° 51' 30" L or N
29.06' N.W. to Spike T.P.
48.48' S.E. to Stake.
33.63' S. to Stake.

THIS PORTION ABANDONED SEPT 1965
DIRECTOR OF HIGHWAY JOURNAL
VOLUME 50, PAGE 843





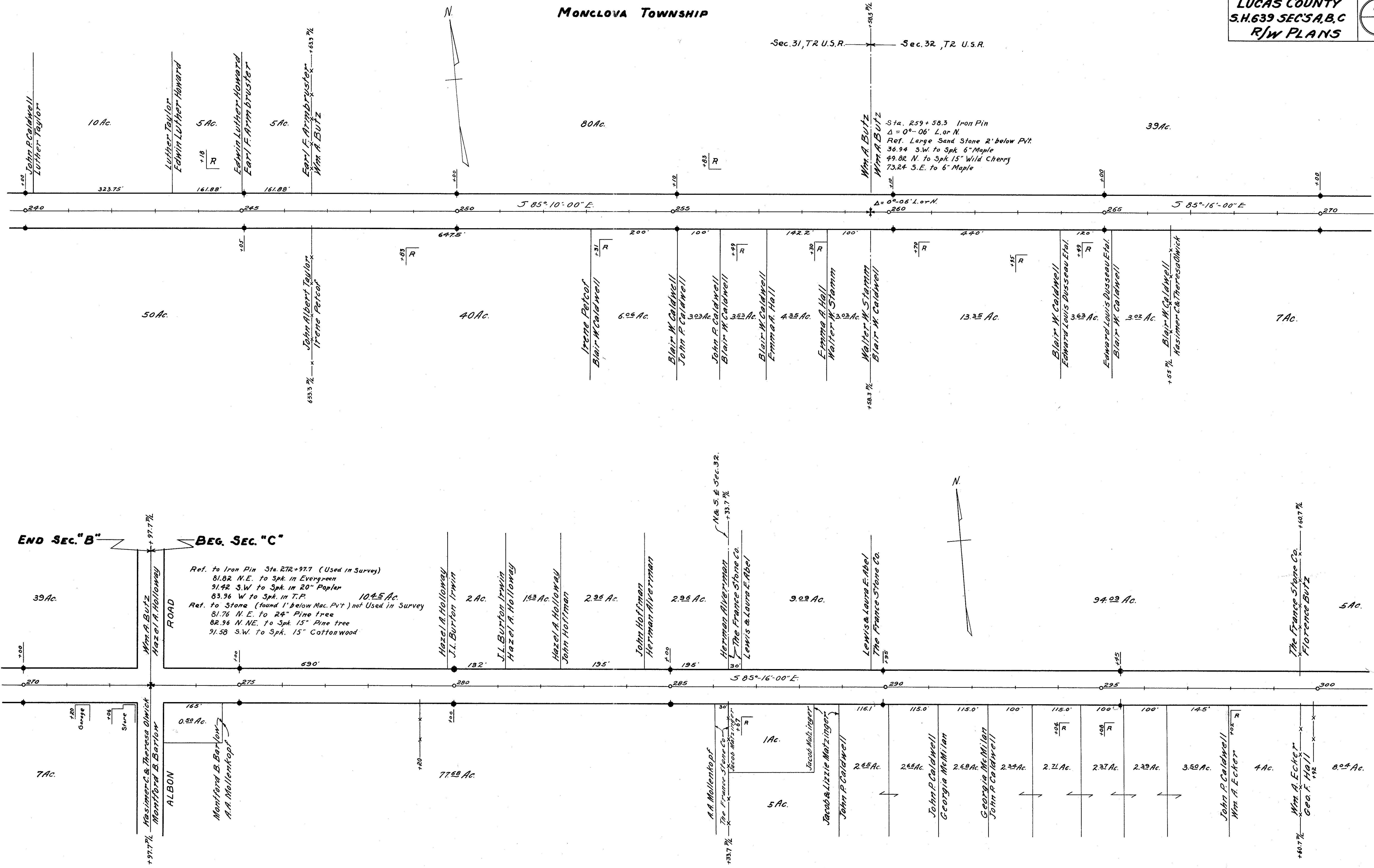
$\Delta 6^{\circ} 36' L$ or N
 $D = 2'$
 $R = 2864.93'$
 $T = 165.19'$
 $L = 330.07'$
 Sta. 159+99.4 P.I. (R.R. Spk.)
 Ref. 3897.5' to stacks at N.E.
 cor. House.
 48.22' E. to Spk. 6" Plum Tree.
 P.C. Sta. 158+38.21
 P.T. Sta. 161+68.88

Sta. 169+70.35 P.I. (R.R. Spk.)
 $\Delta = 0^{\circ} 53' 00'' R$ or S
 Ref. 70.46' N.E. to R.R. Spk. T.P.
 62.31' N.W. " " " "

MONCLOVA TOWNSHIP

Sec. 31, T.R. U.S.R. Sec. 32, T.R. U.S.R.

SIGNED
JUN 1917



Sta. 259+58.3 Iron Pin
 $\Delta = 0^{\circ}-06' L. or N.$
 Ref. Large Sand Stone 2' below P.V.T.
 36.94 S.W. to Spk. 6" Maple
 49.82 N. to Spk. 15" Wild Cherry
 73.24 S.E. to 6" Maple

Ref. to Iron Pin Sta. 272+97.7 (Used in Survey)
 81.82 N.E. to Spk. in Evergreen
 91.42 S.W. to Spk. in 20" Poplar
 83.96 W. to Spk. in T.P.
 10.45 Ac.
 Ref. to Stone (found 1' below Mac. P.V.T.) not Used in Survey
 81.76 N.E. to 24" Pine tree
 82.96 N.N.E. to Spk. 15" Pine tree
 91.58 S.W. to Spk. 15" Cottonwood

MONCLOVA TWP.

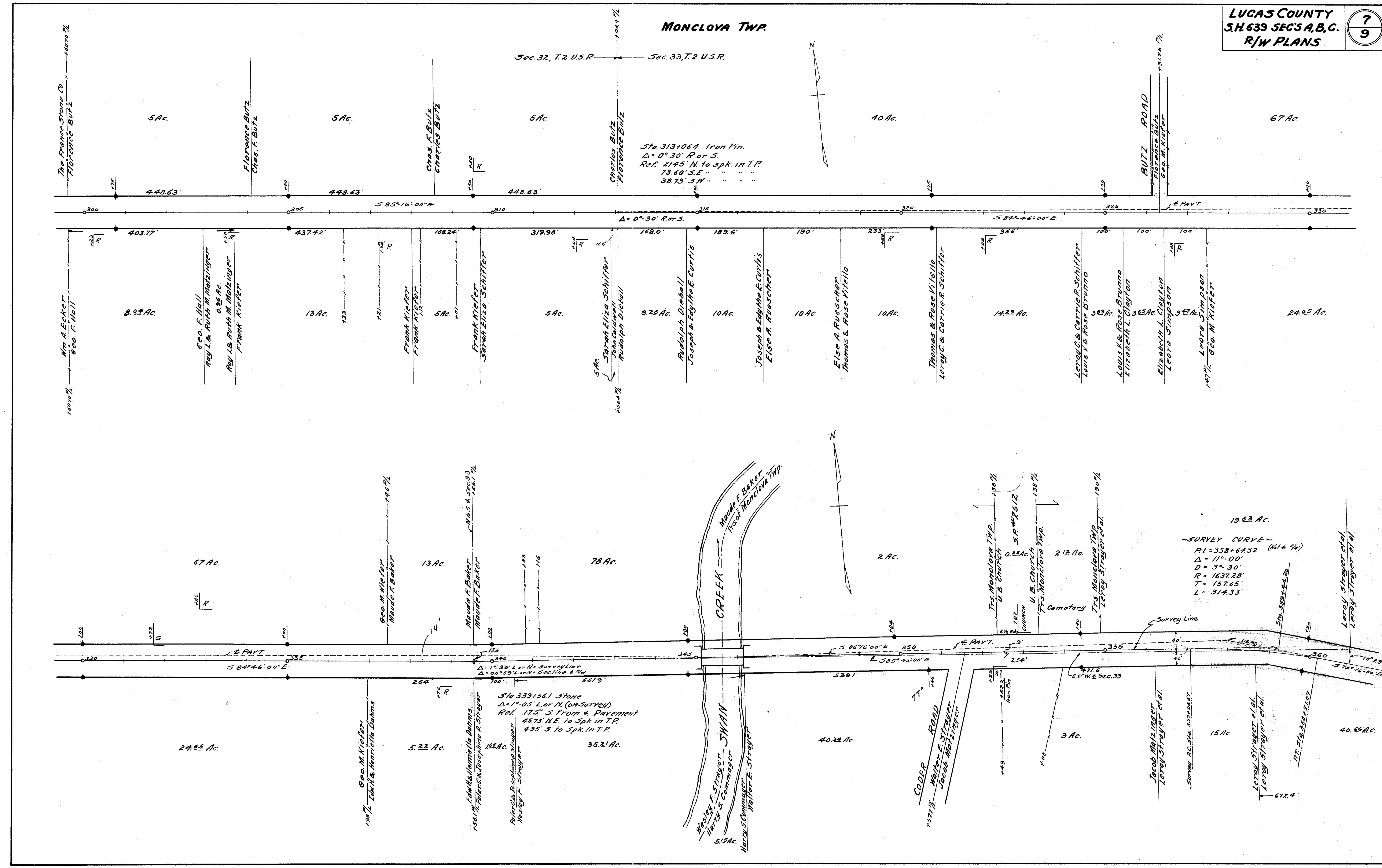
Sec. 32, T.2 U.S.R. Sec. 33, T.2 U.S.R.

Sta 313+06.4 Iron Pin.
Δ = 0° 30' Ror S.
Ref. 2145' N. to spk. in T.P.
73.60' S.E. " " "
38.73' S.W. " " "

Δ = 0° 30' Ror S.

19.63 Ac.
-SURVEY CURVE-
R1 = 3358 + 67.32 (Not # 9W)
Δ = 11° 00'
D = 3° 30'
R = 1637.28'
T = 157.65'
L = 314.33'

Sta. 339+56.1 Stone
Δ = 1° 05' L or N. (on Survey)
Ref. 175' S. from & Pavement
45.73' N.E. to Spk. in T.P.
4.95' S. to Spk. in T.P.



Scanned
JUN 19 1977

- MONCLOVA TOWNSHIP -

