

O.D.O.T. DISTRICT 2 SURVEY OFFICE (USE ONLY)

PERSONNEL _____ REFERENCE NO. 1 SHEET 1 OF 48
 NOTES STONE DATE 7/14/71 ROUTE US 20A
 H.C. MICHALAK WEATHER COOL COUNTY LUCAS
 R.C. SCHRODER TEMP. 70° TOWNSHIP SWANTON
 _____ SECTION 7
 _____ T 7 N R 4 E

TYPE MONUMENT BRASS CAP MON.

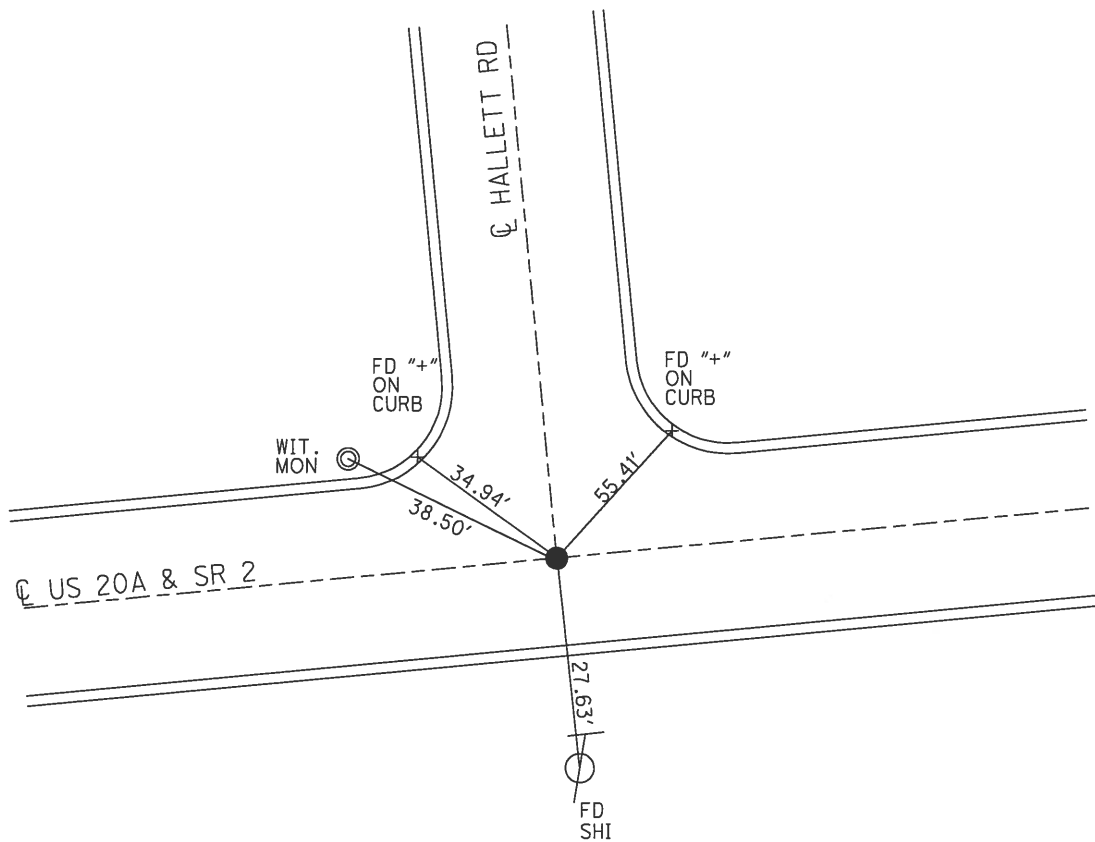
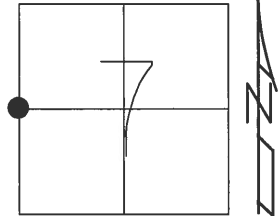
~~ON SURFACE~~ - BELOW 1"

LEFT - ☉ PAV'T - RIGHT ON

22.1' TO S EDGE PAVEMENT

S.L.M. 0+00

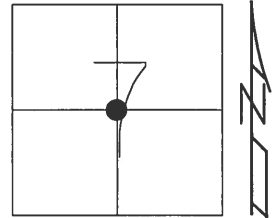
Grid: Northing: - Easting: -



O.D.O.T. DISTRICT 2 SURVEY OFFICE (USE ONLY)

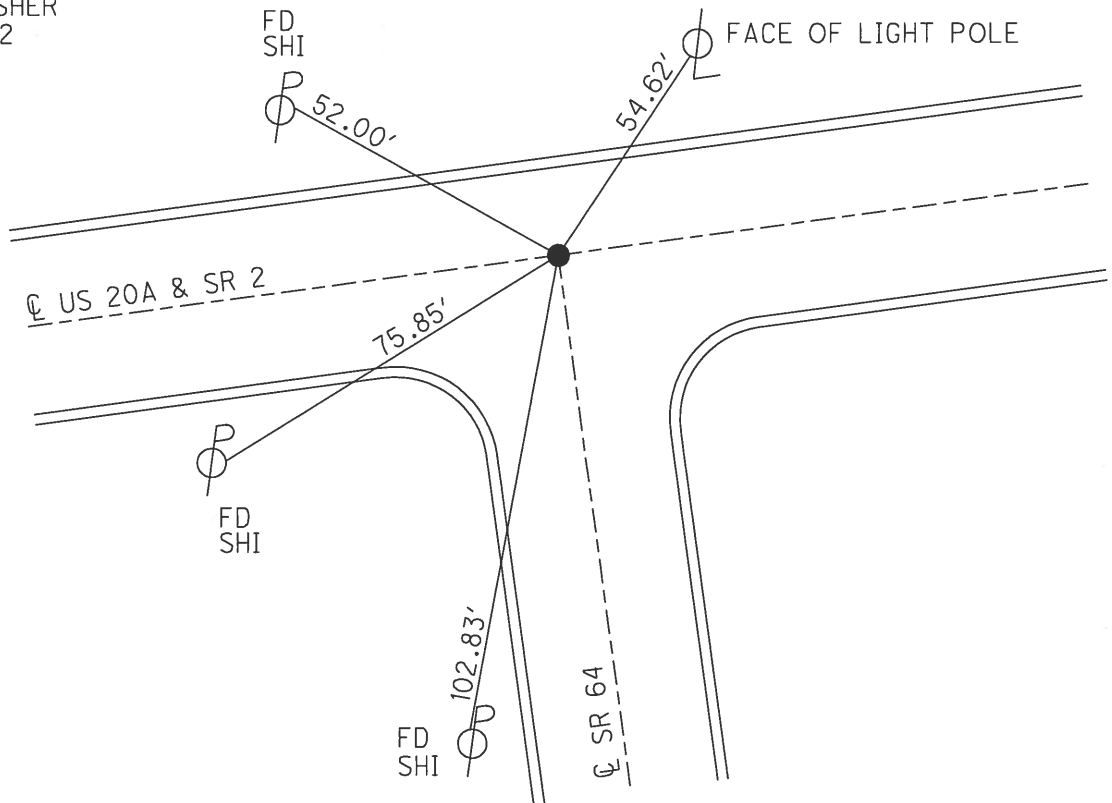
PERSONNEL _____ REFERENCE NO. 2 SHEET 2 OF 48
 NOTES HOMAN DATE 7/29/16 ROUTE US 20A
 H.C. HOMAN WEATHER CLOUDY COUNTY LUCAS
 R.C. KEFFER TEMP. 75°F TOWNSHIP SWANTON
 _____ SECTION 7
 _____ T 7 N R 5 E

TYPE MONUMENT MOBORA MON
~~ON SURFACE~~ - BELOW 2"
 LEFT - ☉ PAV'T - RIGHT ON
27.1' TO LT EDGE PAVEMENT
 S.L.M. _____ 25+56



GRID: NORTHING: 700674.2558 EASTING: 1592809.771

RECORD:
 FD MOBORA MON
 6/15/03, DCH
 SET MAG/WASHER
 1/13/04, DCH
 FD MOBORA MON
 2" DOWN
 GPS, REF2
 7/29/16
 SET MAG/WASHER
 GPS, NEWREF2
 10/05/16



O.D.O.T. DISTRICT 2 SURVEY OFFICE (USE ONLY)

PERSONNEL _____ REFERENCE NO. 3 SHEET 3 OF 48

NOTES	<u>HOMAN</u>	DATE	<u>7/29/16</u>	ROUTE	<u>US 20A</u>
H.C.	<u>HOMAN</u>	WEATHER	<u>CLOUDY</u>	COUNTY	<u>LUCAS</u>
R.C.	<u>KEFFER</u>	TEMP.	<u>75°F</u>	TOWNSHIP	<u>SWANTON</u>
				SECTION	<u>7</u>
				T <u>7</u> N	R <u>5</u> E

TYPE MONUMENT MOBORA MON

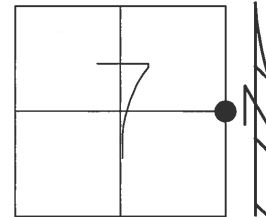
~~ON SURFACE~~ - BELOW 3"

LEFT - Q PAV'T - RIGHT ON

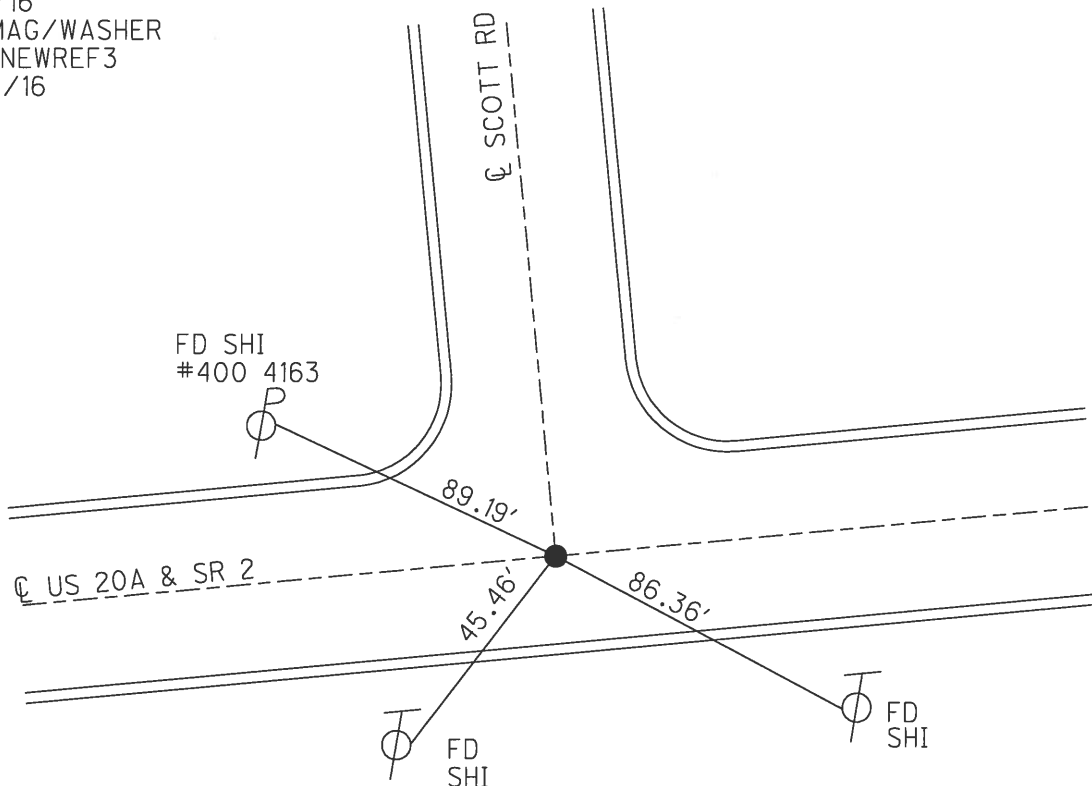
27.2' TO RT EDGE PAVEMENT

S.L.M. 52+26

GRID: NORTHING: 700882.1963 EASTING: 1595450.313



RECORD:
 FD MOBORA MON
 6/15/03, DCH
 SET MAG/WASHER
 1/13/04, DCH
 FD MOBORA MON
 3" DOWN
 GPS, REF3
 7/29/16
 SET MAG/WASHER
 GPS, NEWREF3
 10/05/16



O.D.O.T. DISTRICT 2 SURVEY OFFICE (USE ONLY)

PERSONNEL _____ REFERENCE NO. 4 SHEET 4 OF 48
 NOTES HOMAN DATE 7/29/16 ROUTE US 20A
 H.C. HOMAN WEATHER CLOUDY COUNTY LUCAS
 R.C. KEFFER TEMP. 75°F TOWNSHIP SWANTON
 _____ SECTION 8
 _____ T 7 N R 5 E

TYPE MONUMENT MOBORA MON

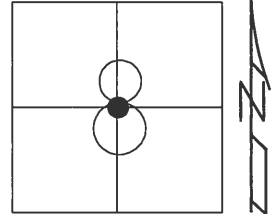
~~ON SURFACE~~ - BELOW 3"

LEFT - ☉ PAV'T - RIGHT 1.0'

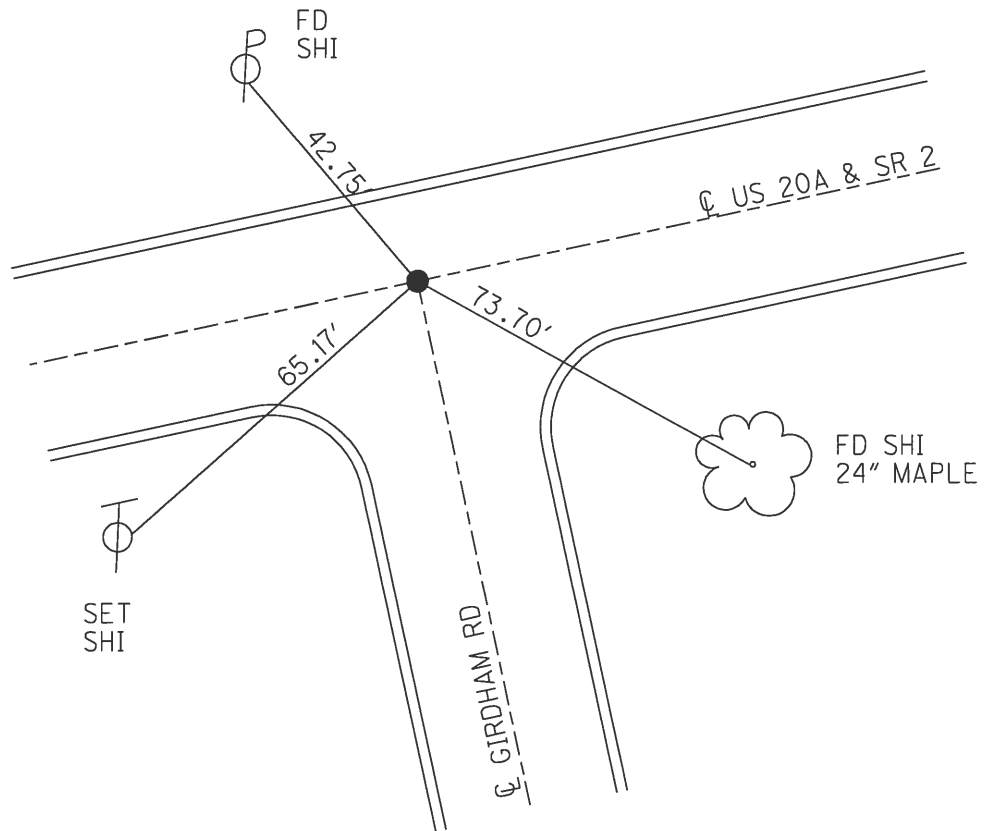
27' TO LT EDGE PAVEMENT

S.L.M. 78+70

GRID: NORTHING: 701091.3889 EASTING: 1598079.533



RECORD:
 FD MOBORA MON
 6/15/03, DCH
 SET MAG/WASHER
 1/13/04, DCH
 FD MOBORA MON
 3" DOWN
 GPS, REF4
 7/29/16
 SET MAG/WASHER
 GPS, NEWREF4
 10/05/16



O.D.O.T. DISTRICT 2 SURVEY OFFICE (USE ONLY)

PERSONNEL _____ REFERENCE NO. 4 A SHEET 5 OF 48

NOTES HOMAN DATE 7/29/16 ROUTE US 20A
 H.C. HOMAN WEATHER CLOUDY COUNTY LUCAS
 R.C. KEFFER TEMP. 75°F TOWNSHIP SWANTON
 _____ SECTION 8
 _____ T 7 N R 5 E

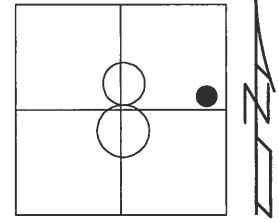
TYPE MONUMENT MOBORA MON

~~ON SURFACE~~ - BELOW 5"

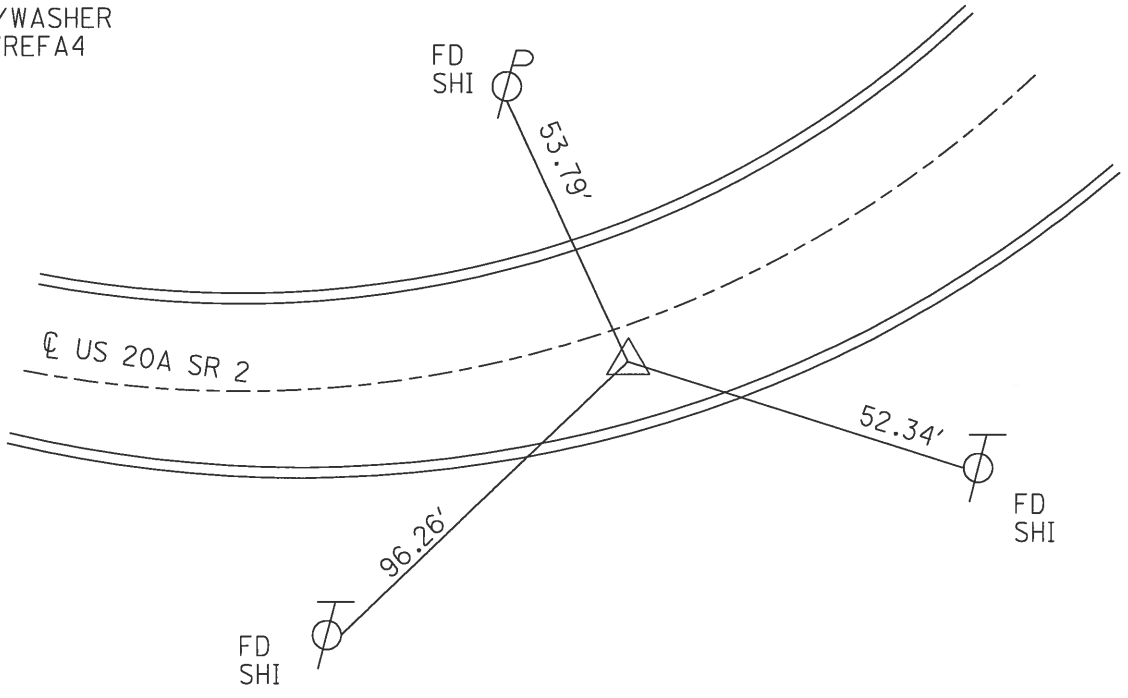
LEFT - ☉ PAV'T - RIGHT 3.0'
23.5' TO RT EDGE PAVEMENT

S.L.M. 100+55

GRID: NORHTING: 701267.101 EASTING: 1600251.266



RECORD:
 PI CURVE LEFT
 EAST OF GIRDHAM
 FD MOBORA MON
 6/15/03, DCH
 SET MAG/WASHER
 1/13/04, DCH
 FD MOBORA MON
 5" DOWN
 GPS, REFA4
 7/29/16
 SET MAG/WASHER
 GPS, NEWREFA4
 10/05/16



O.D.O.T. DISTRICT 2 SURVEY OFFICE (USE ONLY)

PERSONNEL _____ REFERENCE NO. 5 SHEET 6 OF 48

NOTES	<u>HOMAN</u>	DATE	<u>7/29/16</u>	ROUTE	<u>US 20A</u>
H.C.	<u>HOMAN</u>	WEATHER	<u>CLOUDY</u>	COUNTY	<u>LUCAS</u>
R.C.	<u>KEFFER</u>	TEMP.	<u>80°F</u>	TOWNSHIP	<u>SWANTON</u>
				SECTION	<u>8</u>
				T <u>7</u> N	R <u>5</u> E

TYPE MONUMENT _____ SM RR SPIKE _____

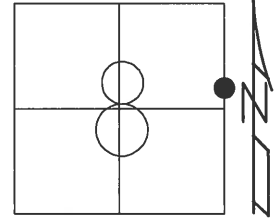
~~ON SURFACE~~ - BELOW 2"

LEFT - ☉ PAV'T - RIGHT ON

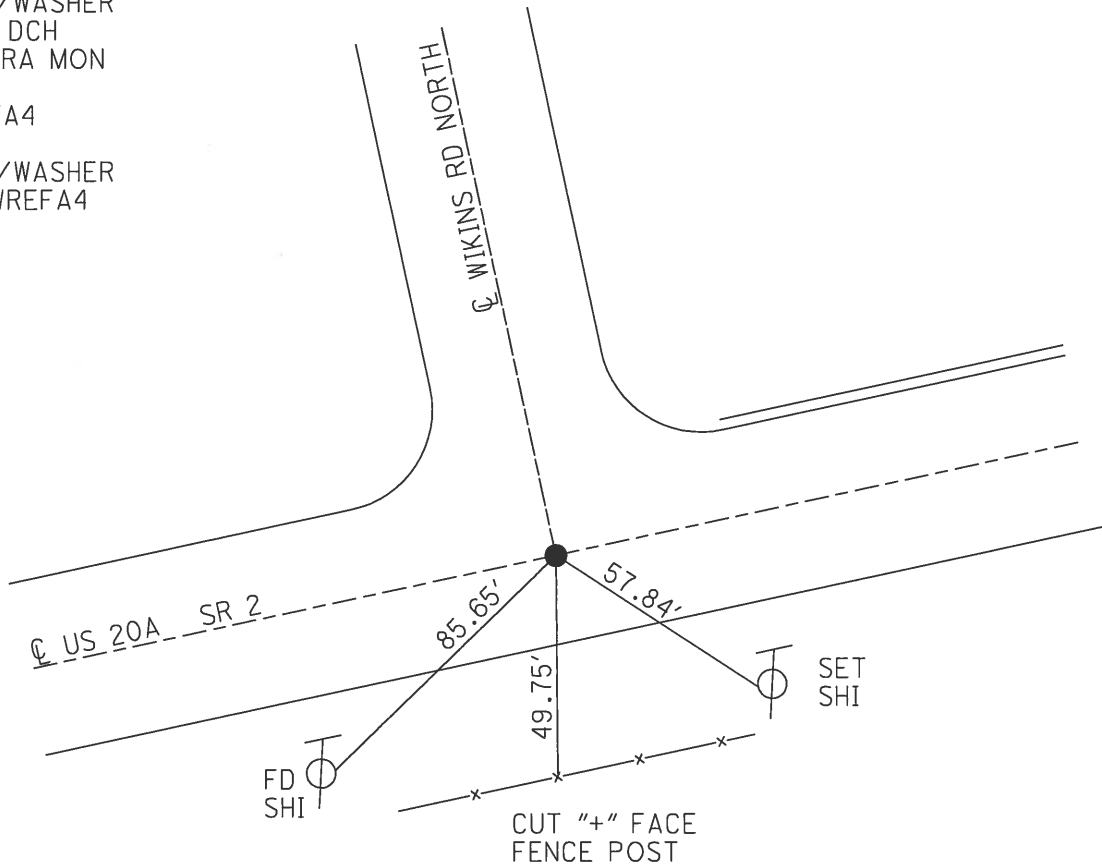
26.9' TO RT EDGE PAVEMENT

S.L.M. _____ 105+28 _____

GRID: NORTHING: 701345.5995 EASTING: 1600721.366



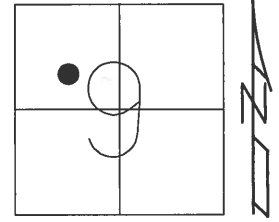
RECORD:
 FD SM RR SPIKE
 6/15/03, DCH
 SET MAG/WASHER
 1/13/04, DCH
 FD MOBORA MON
 5" DOWN
 GPS, REFA4
 7/29/16
 SET MAG/WASHER
 GPS, NEWREFA4
 10/05/16



O.D.O.T. DISTRICT 2 SURVEY OFFICE (USE ONLY)

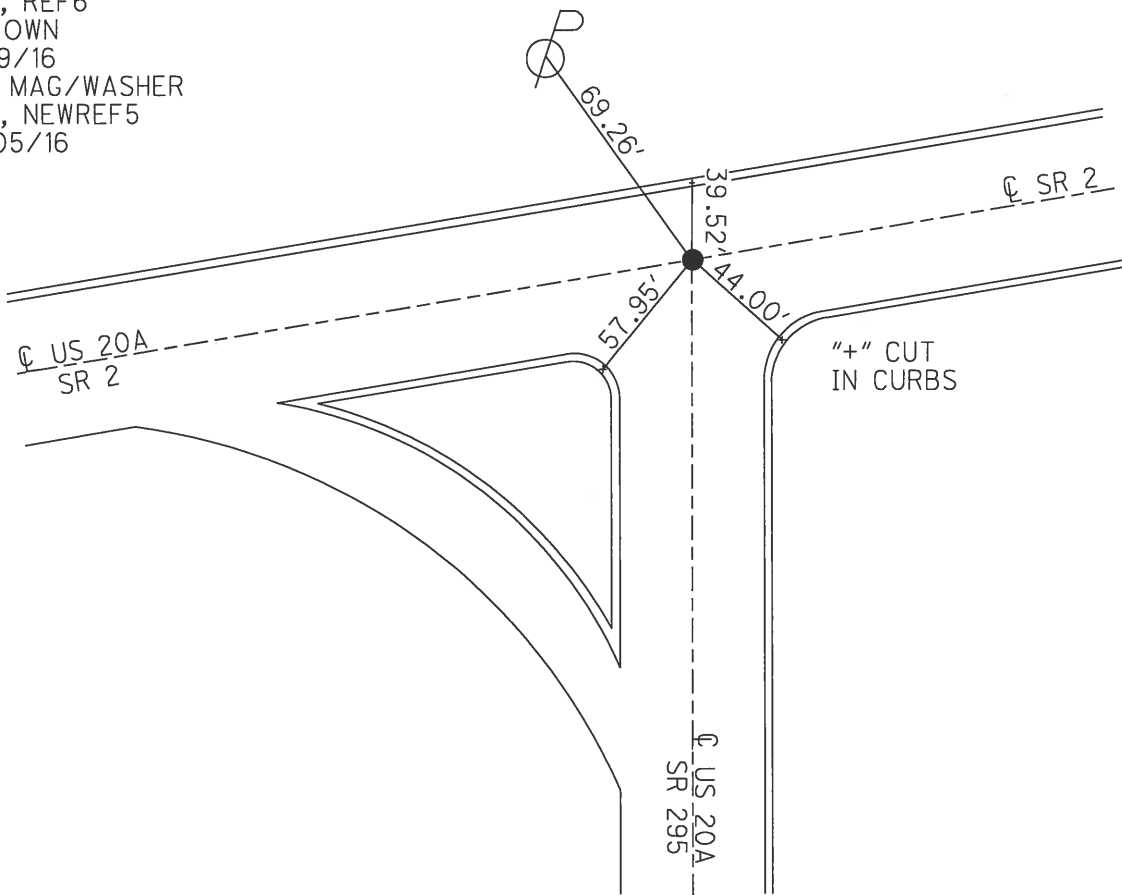
PERSONNEL _____ REFERENCE NO. 6 SHEET 7 OF 47
 NOTES HOMAN DATE 7/29/16 ROUTE US 20A
 H.C. HOMAN WEATHER CLOUDY COUNTY LUCAS
 R.C. KEFFER TEMP. 75°F TOWNSHIP SWANTON
 _____ SECTION 9
 _____ T 7 N R 9 E

TYPE MONUMENT RR SPIKE
~~ON SURFACE~~ - BELOW 8"
 LEFT - ☉ PAV'T - RIGHT ON
- TO - EDGE PAVEMENT
 S.L.M. 117+74.4



GRID: NORTHING: 701562.9063 EASTING: 1602020.194

RECORD:
 FD RR SPIKE
 1" DOWN
 6/15/03
 SET MAG/WASHER
 1/13/04
 GPS, REF6
 8" DOWN
 7/29/16
 SET MAG/WASHER
 GPS, NEWREF5
 10/05/16



O.D.O.T. DISTRICT 2 SURVEY OFFICE (USE ONLY)

PERSONNEL _____ REFERENCE NO. 7 SHEET 8 OF 48

NOTES WESTFALL DATE 8/2/13 ROUTE US 20A
 H.C. ROUSOS WEATHER SUNNY COUNTY LUCAS
 R.C. WESTFALL TEMP. 70° TOWNSHIP SWANTON
 _____ SECTION 9
 T 7 N R 9 E

TYPE MONUMENT 2" SQ. BOLT

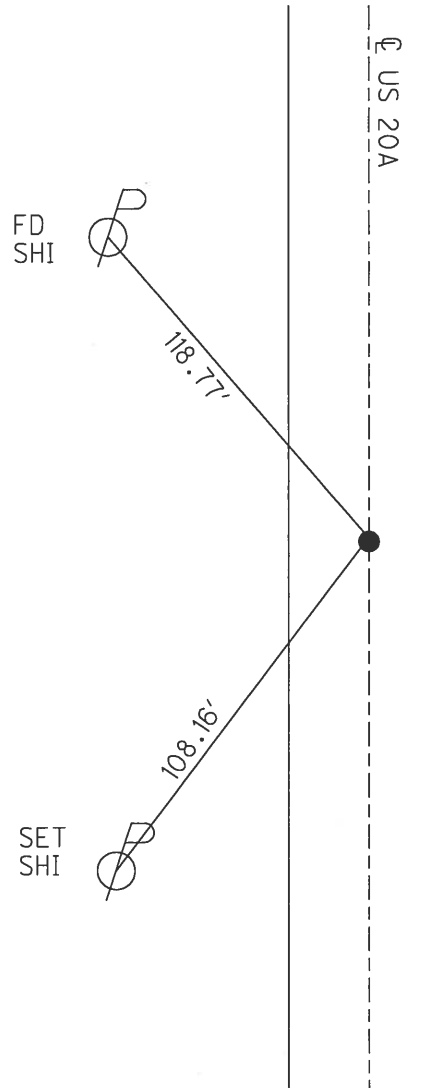
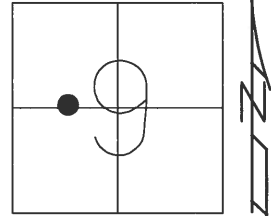
~~ON SURFACE~~ - BELOW 2"

LEFT - ☉ PAV'T - RIGHT - _____

_____ TO _____ EDGE PAVEMENT

S.L.M. 127+56.65

GRID: NORTHING: 700580.729 EASTING: 1602019.061



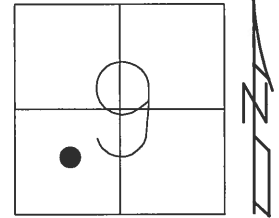
RECORD:
 FD SQ BOLT
 3" DEEP
 6/28/85, I.S.
 FD SQ BOLT
 GPS, REF7
 12/6/11, DCH
 SET MAG/WASHER
 GPS, NEWREF7
 4/11/14, DCH

O.D.O.T. DISTRICT 2 SURVEY OFFICE (USE ONLY)

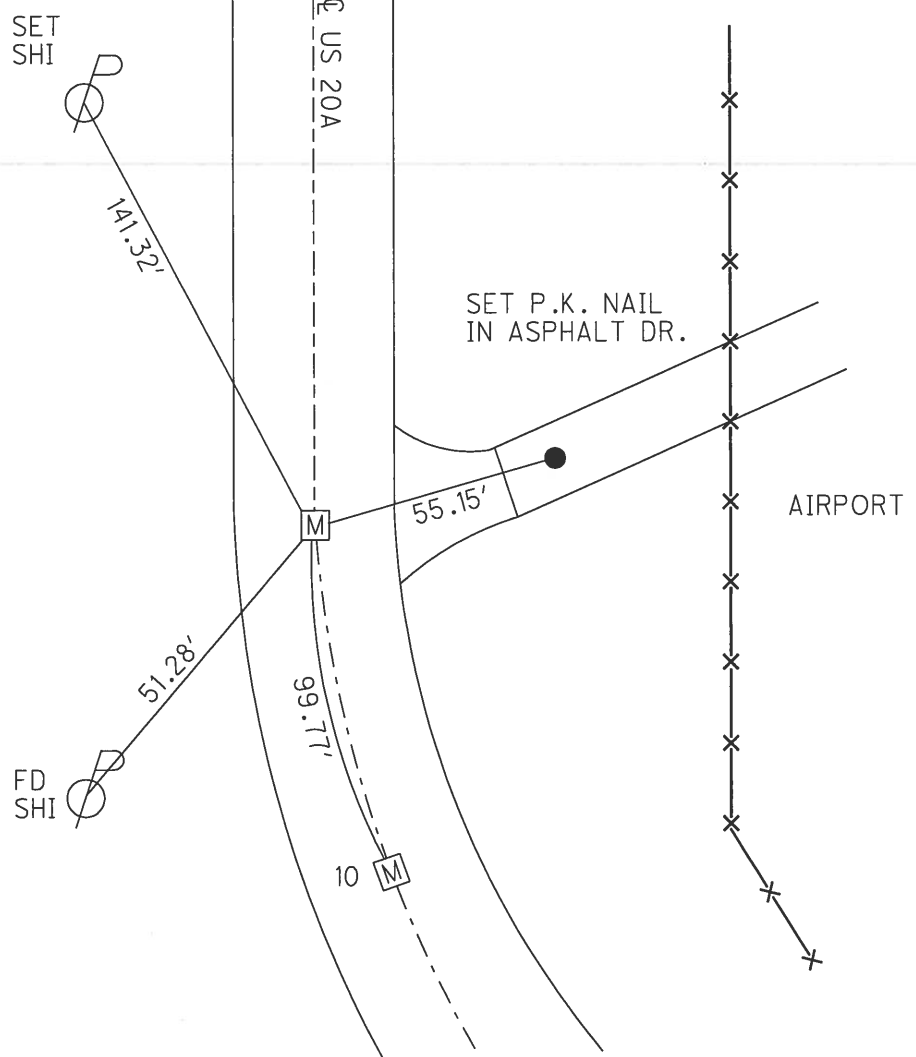
PERSONNEL _____ REFERENCE NO. 9 SHEET 9 OF 48
 NOTES WESTFALL DATE 8/2/13 ROUTE US 20A
 H.C. ROUSOS WEATHER SUNNY COUNTY LUCAS
 R.C. WESTFALL TEMP. 70° TOWNSHIP SWANTON
 _____ KEFFER _____ SECTION 9
 T 7 N R 9 E

TYPE MONUMENT MONBOX
 ON SURFACE - ~~BELOW~~ ON _____
 LEFT - ☉ PAV'T - RIGHT - _____
 - TO - EDGE PAVEMENT
 S.L.M. 139+38.89

GRID: NORTHING: 699398.513 EASTING: 1602016.865



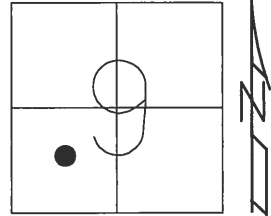
RECORD:
 FD 1" IPIN
 IN MON BOX
 GPS, SV3985
 12/6/11, DCH
 GPS, NEWREFA7
 4/11/14, DCH



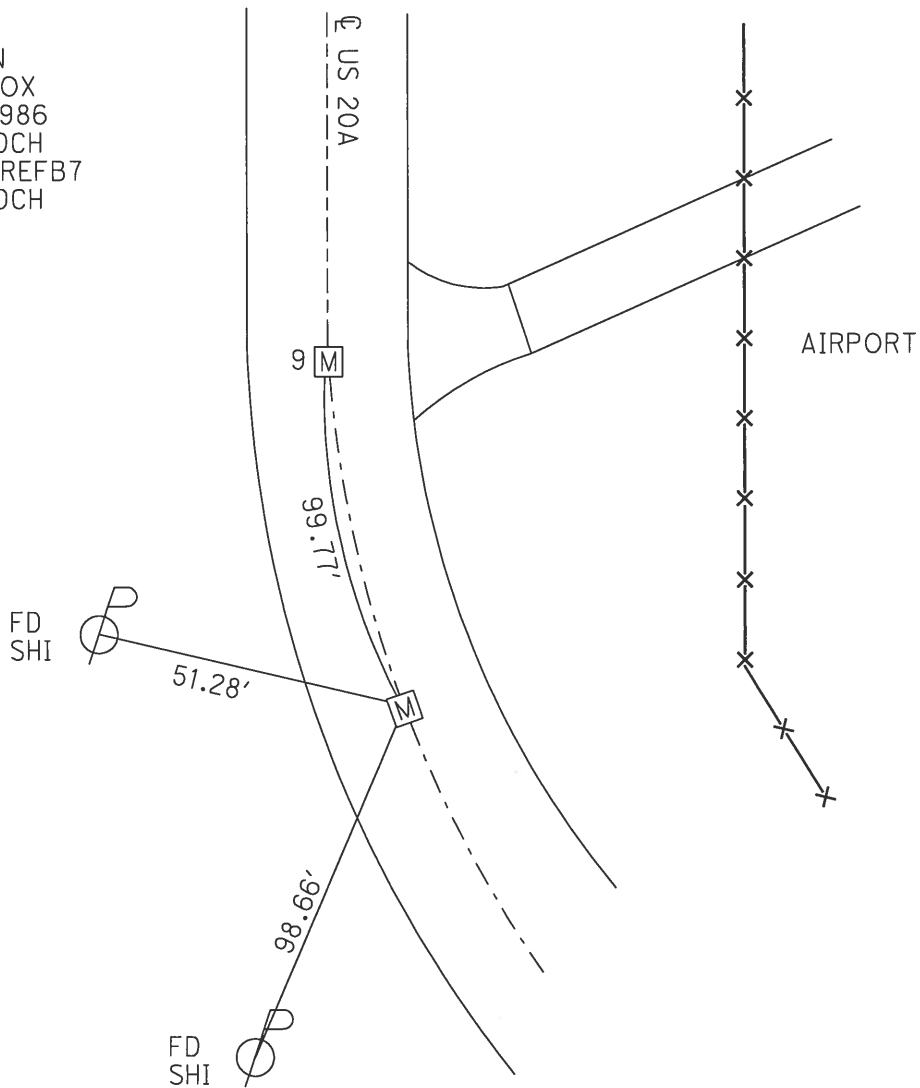
O.D.O.T. DISTRICT 2 SURVEY OFFICE (USE ONLY)

PERSONNEL _____ REFERENCE NO. 10 SHEET 10 OF 48
 NOTES WESTFALL DATE 8/2/13 ROUTE US 20A
 H.C. ROUSOS WEATHER SUNNY COUNTY LUCAS
 R.C. WESTFALL TEMP. 70° TOWNSHIP SWANTON
 _____ KEFFER _____ SECTION 9
 _____ T 7 N R 9 E

TYPE MONUMENT MON BOX
 ON SURFACE - ~~BELOW~~ ON _____
 LEFT - ☉ PAV'T - RIGHT - _____
 - TO - EDGE PAVEMENT
 S.L.M. 140+38.66
 GRID: NORTHING: _____ EASTING: _____



RECORD:
 FD 1" IPIN
 IN MON BOX
 GPS, SV3986
 12/6/11, DCH
 GPS, NEWREFB7
 4/11/14, DCH



O.D.O.T. DISTRICT 2 SURVEY OFFICE (USE ONLY)

PERSONNEL _____ REFERENCE NO. 12 SHEET 11 OF 48

NOTES WESTFALL DATE 8/2/13 ROUTE US 20A
H.C. ROUSOS WEATHER SUNNY COUNTY LUCAS
R.C. WESTFALL TEMP. 70° TOWNSHIP SWANTON
KEFFER SECTION 9
T 7 N R 9 E

TYPE MONUMENT 1 1/2" SQ BOLT

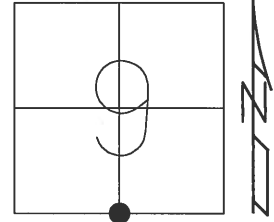
~~ON SURFACE~~ - BELOW 1 1/2"

LEFT - ☉ PAV'T - RIGHT -

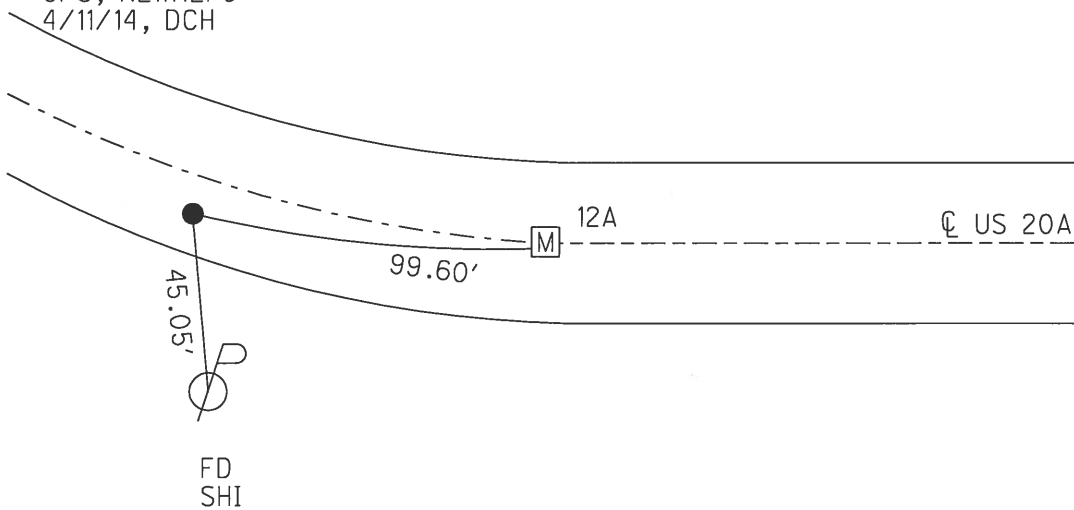
- TO - EDGE PAVEMENT

S.L.M. 160+74.5

GRID: NORTHING: 697964.710 EASTING: 1603332.463



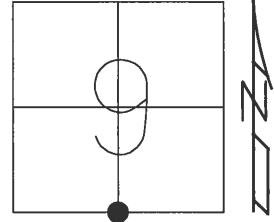
RECORD:
FD 1 1/2" SQ BOLT
IN MON BOX 3" BELOW
6/28/85, IS
FD BOLT
1 1/2" DOWN
GPS, REF8
12/6/11, DCH
SET MAG/WASHER
GPS, NEWREF8
4/11/14, DCH



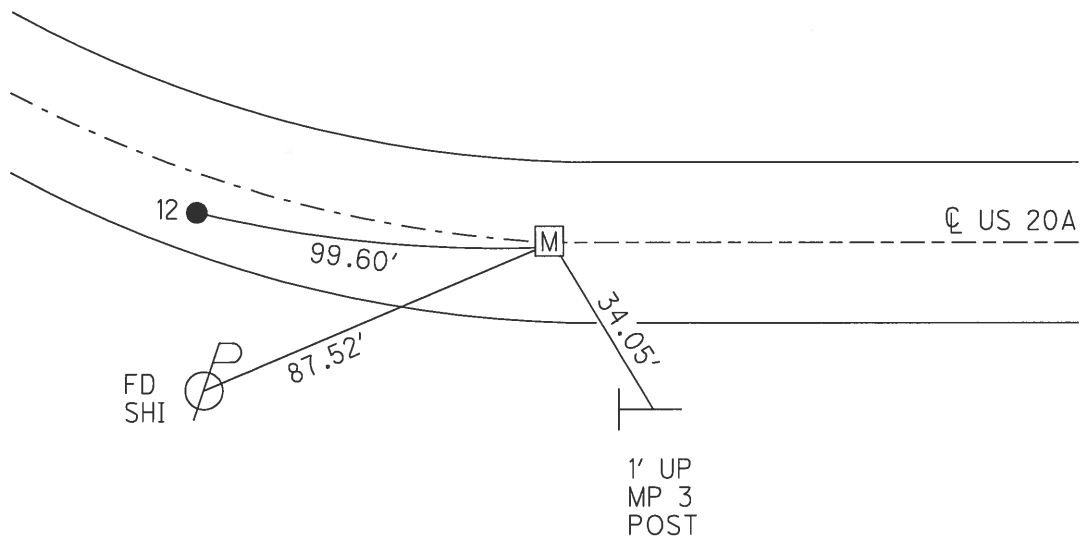
O.D.O.T. DISTRICT 2 SURVEY OFFICE (USE ONLY)

PERSONNEL _____ REFERENCE NO. 12 A SHEET 12 OF 48
NOTES WESTFALL DATE 8/2/13 ROUTE US 20A
H.C. ROUSOS WEATHER SUNNY COUNTY LUCAS
R.C. WESTFALL TEMP. 70° TOWNSHIP SWANTON
KEFFER SECTION 9
T 7 N R 9 E

TYPE MONUMENT MONBOX, 5/8" IPIN
ON SURFACE - ~~BELOW~~ ON _____
LEFT - ☉ PAV'T - RIGHT - _____
- TO - EDGE PAVEMENT
S.L.M. 161+74.10
GRID: NORTHING: 697963.543 EASTING: 1603432.044



RECORD:
FD 1 1/2" SQ BOLT
IN MONBOX
SET BY LUCAS CO
6/28/85, IS
FD MONBOX
GPS, REF9
12/6/11, DCH
GPS, NEWREF9
4/11/14, DCH



O.D.O.T. DISTRICT 2 SURVEY OFFICE (USE ONLY)

PERSONNEL _____ REFERENCE NO. 13 SHEET 13 OF 48

NOTES	<u>WESTFALL</u>	DATE	<u>8/2/13</u>	ROUTE	<u>US 20A</u>
H.C.	<u>ROUSOS</u>	WEATHER	<u>SUNNY</u>	COUNTY	<u>LUCAS</u>
R.C.	<u>WESTFALL</u>	TEMP.	<u>70°</u>	TOWNSHIP	<u>SWANTON</u>
	<u>KEFFER</u>			SECTION	<u>9</u>
				T	<u>7</u> R <u>9</u> E

TYPE MONUMENT SQ BOLT

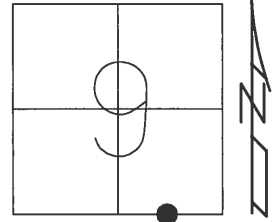
~~ON SURFACE~~ - BELOW 1 1/2"

LEFT - ℄ PAV'T - RIGHT -

- TO - EDGE PAVEMENT

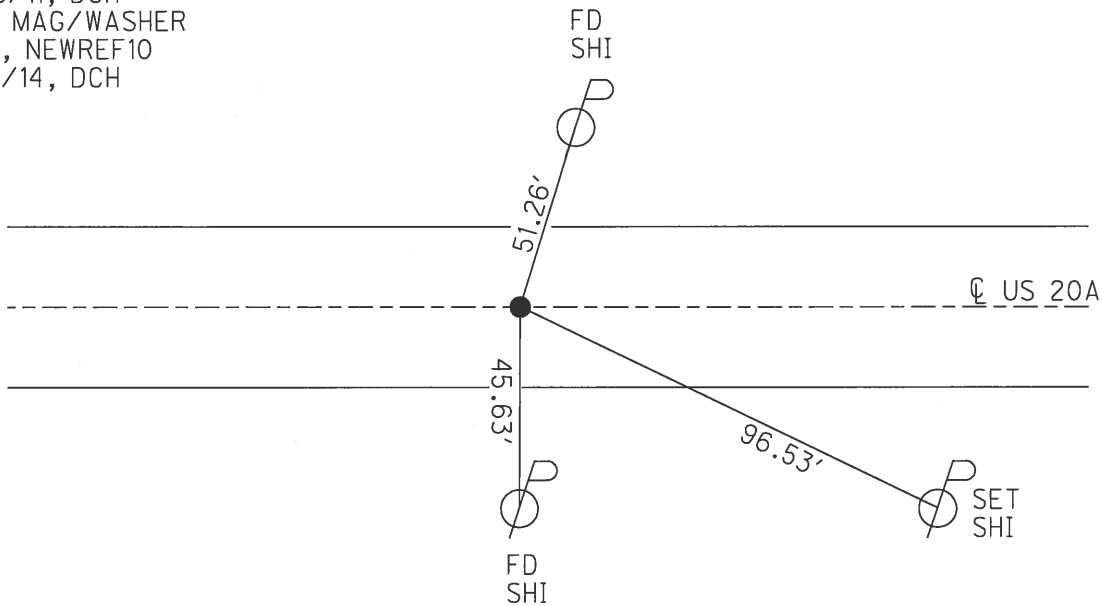
S.L.M. 173+92.66

GRID: NORTHING: 697948.754 EASTING: 1604650.413



RECORD:

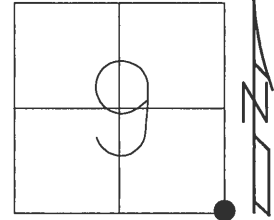
FD 1 1/2" SQ BOLT
 IN MONBOX 3" BELOW
 6/28/85, IS
 FD BOLT
 1 1/2" DOWN
 GPS, REF10
 12/6/11, DCH
 SET MAG/WASHER
 GPS, NEWREF10
 4/11/14, DCH



O.D.O.T. DISTRICT 2 SURVEY OFFICE (USE ONLY)

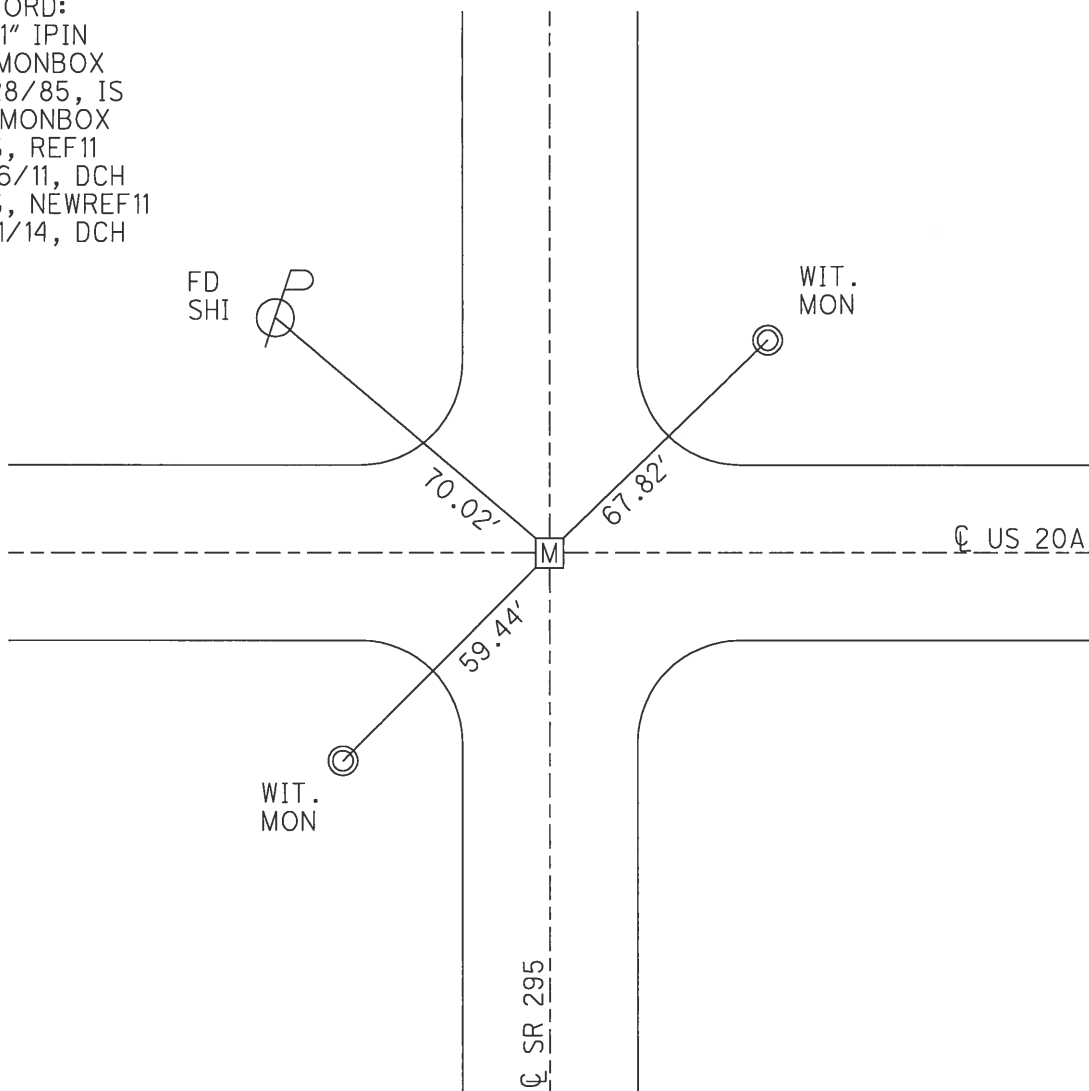
PERSONNEL _____ REFERENCE NO. 14 SHEET 14 OF 48
 NOTES STONE DATE 7/15/71 ROUTE US 20A
 H.C. MICHALAK WEATHER FAIR COUNTY LUCAS
 R.C. SCHRODER TEMP. 70° TOWNSHIP SWANTON
 _____ KEFFER _____ SECTION 9
 T 7 N R 9 E

TYPE MONUMENT MONBOX, 1" IPIN
 ON SURFACE - ~~BELOW~~ ON _____
 LEFT - ☉ PAV'T - RIGHT - _____
 - TO - EDGE PAVEMENT
 S.L.M. 187+10.57



GRID: NORTHING: 697932.782 EASTING: 1605968.351

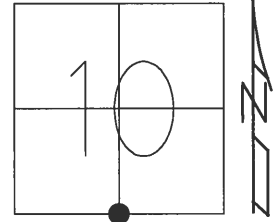
RECORD:
 FD 1" IPIN
 IN MONBOX
 6/28/85, IS
 FD MONBOX
 GPS, REF11
 12/6/11, DCH
 GPS, NEWREF11
 4/11/14, DCH



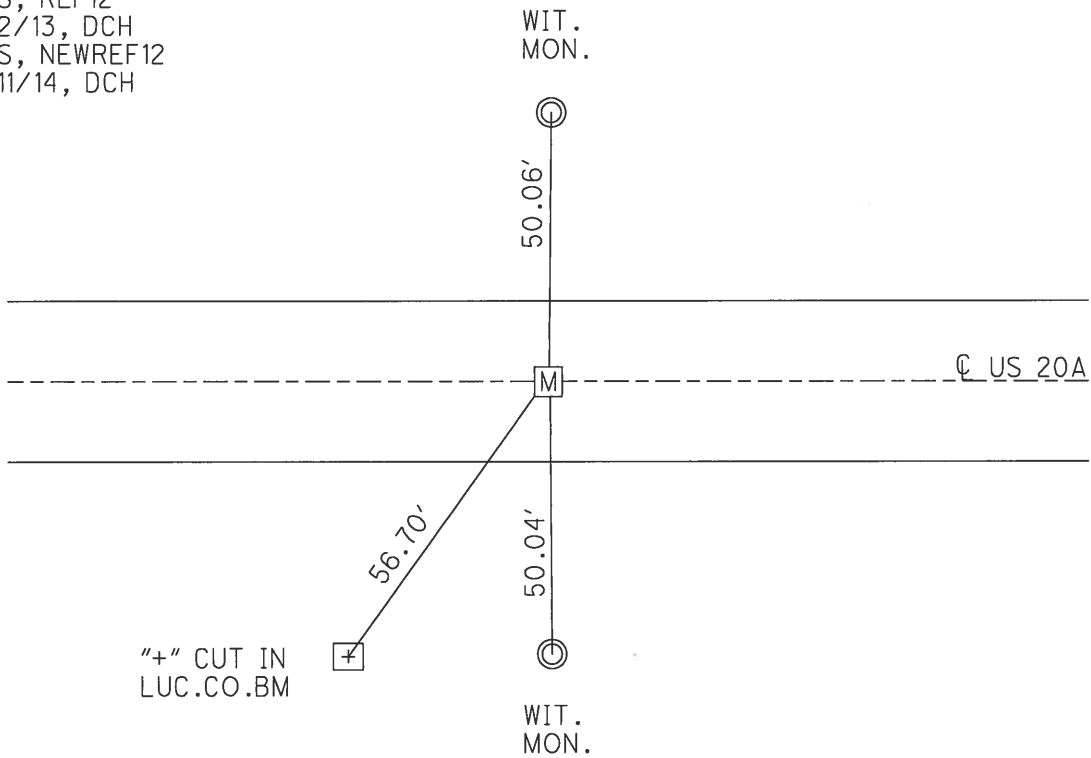
O.D.O.T. DISTRICT 2 SURVEY OFFICE (USE ONLY)

PERSONNEL _____ REFERENCE NO. 15 SHEET 15 OF 48
 NOTES STONE DATE 7/16/71 ROUTE US 20A
 H.C. MICHALAK WEATHER WARM COUNTY LUCAS
 R.C. SCHRODER TEMP. 74° TOWNSHIP SWANTON
 _____ KEFFER _____ SECTION 10
 _____ T 7 N R 9 E

TYPE MONUMENT MONBOX, 1" IPIN
 ON SURFACE - ~~BELOW~~ ON _____
 LEFT - ℄ PAV'T - RIGHT - _____
12' TO RT EDGE PAVEMENT
 S.L.M. 213+54.02
 GRID: NORTHING: 697917.921 EASTING: 1608611.668



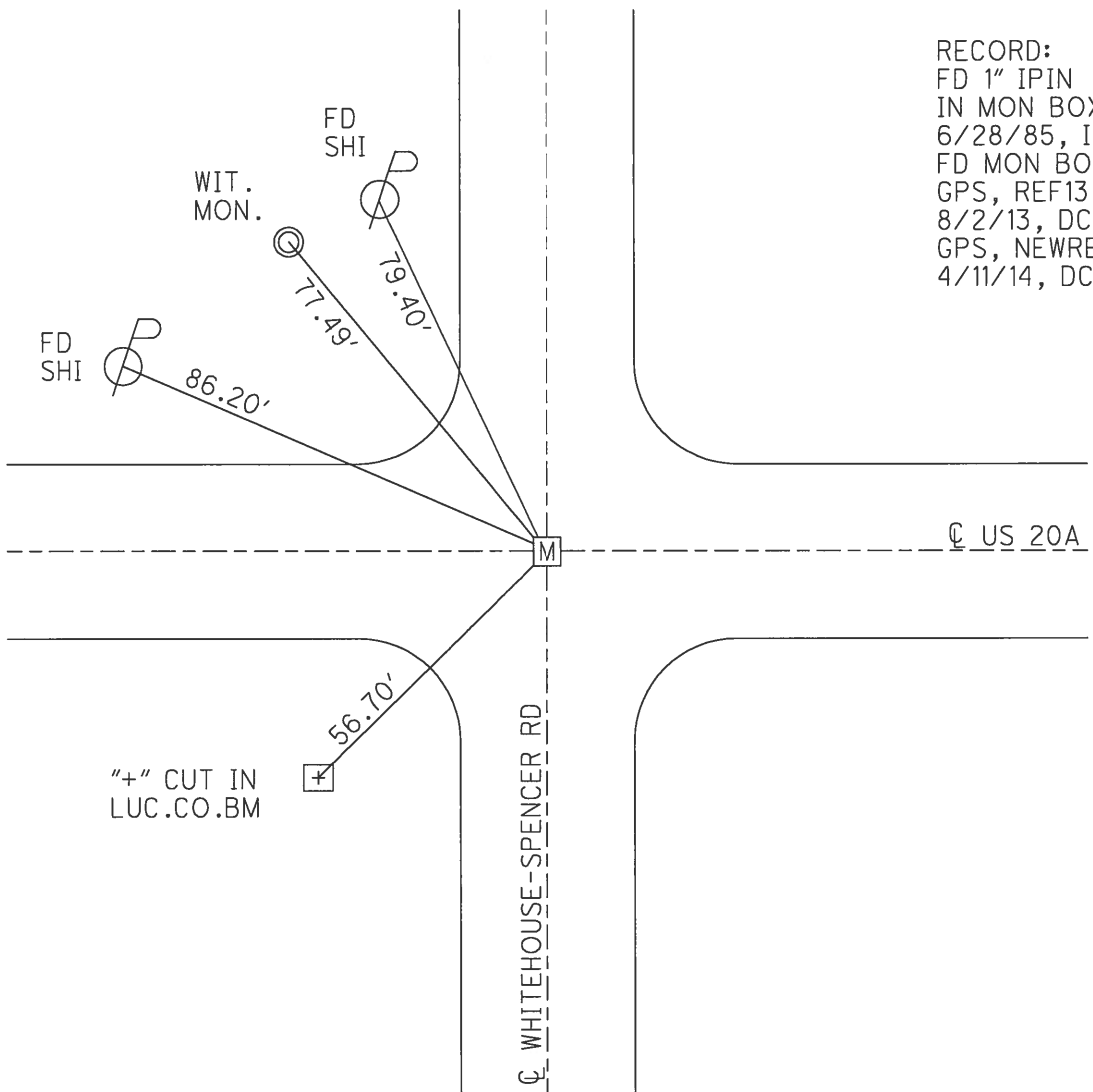
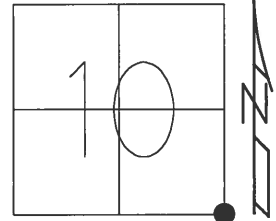
RECORD:
 FD 1" IPIN
 IN MONBOX
 6/28/85, IS
 FD MONBOX
 GPS, REF12
 8/2/13, DCH
 GPS, NEWREF12
 4/11/14, DCH



O.D.O.T. DISTRICT 2 SURVEY OFFICE (USE ONLY)

PERSONNEL _____ REFERENCE NO. 16 SHEET 16 OF 48
 NOTES STONE DATE 7/16/71 ROUTE US 20A
 H.C. MICHALAK WEATHER WARM COUNTY LUCAS
 R.C. SCHRODER TEMP. 74° TOWNSHIP SWANTON
 _____ KEFFER _____ SECTION 10
 _____ T 7 N R 9 E

TYPE MONUMENT MONBOX, 1" IPIN
 ON SURFACE - ~~BELOW~~ ON
 LEFT - ☉ PAV'T - RIGHT -
- TO - EDGE PAVEMENT
 S.L.M. 239+98.26
 GRID: NORTHING: 697903.988 EASTING: 1611255.886

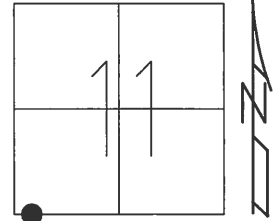


RECORD:
 FD 1" IPIN
 IN MON BOX
 6/28/85, IS
 FD MON BOX
 GPS, REF13
 8/2/13, DCH
 GPS, NEWREF13
 4/11/14, DCH

O.D.O.T. DISTRICT 2 SURVEY OFFICE (USE ONLY)

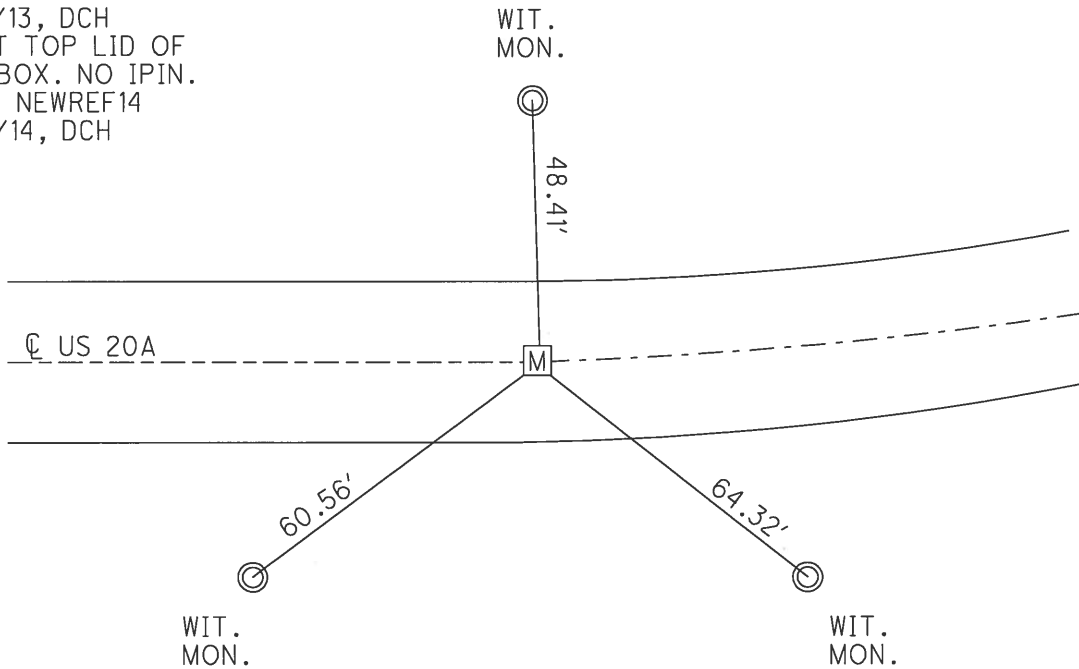
PERSONNEL _____ REFERENCE NO. 17 SHEET 17 OF 48
 NOTES STONE DATE 7/16/71 ROUTE US 20A
 H.C. MICHALAK WEATHER WARM COUNTY LUCAS
 R.C. SCHRODER TEMP. 75° TOWNSHIP SWANTON
 _____ KEFFER _____ SECTION 11
 _____ T 7 N R 9 E

TYPE MONUMENT MONBOX
 ON SURFACE - ~~BELOW~~ ON
 LEFT - ☉ PAV'T - RIGHT -
12.4' TO RT EDGE PAVEMENT
 S.L.M. 242+32.55



GRID: NORTHING: 697905.403 EASTING: 1611490.268

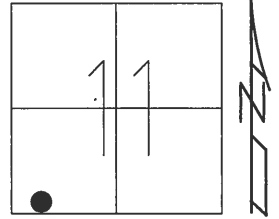
RECORD: P.C.
 FD MONBOX
 6/28/85, IS
 FD MONBOX
 W/ 1" IPIN
 GPS, REF14
 8/2/13, DCH
 SHOT TOP LID OF
 MONBOX. NO IPIN.
 GPS, NEWREF14
 4/11/14, DCH



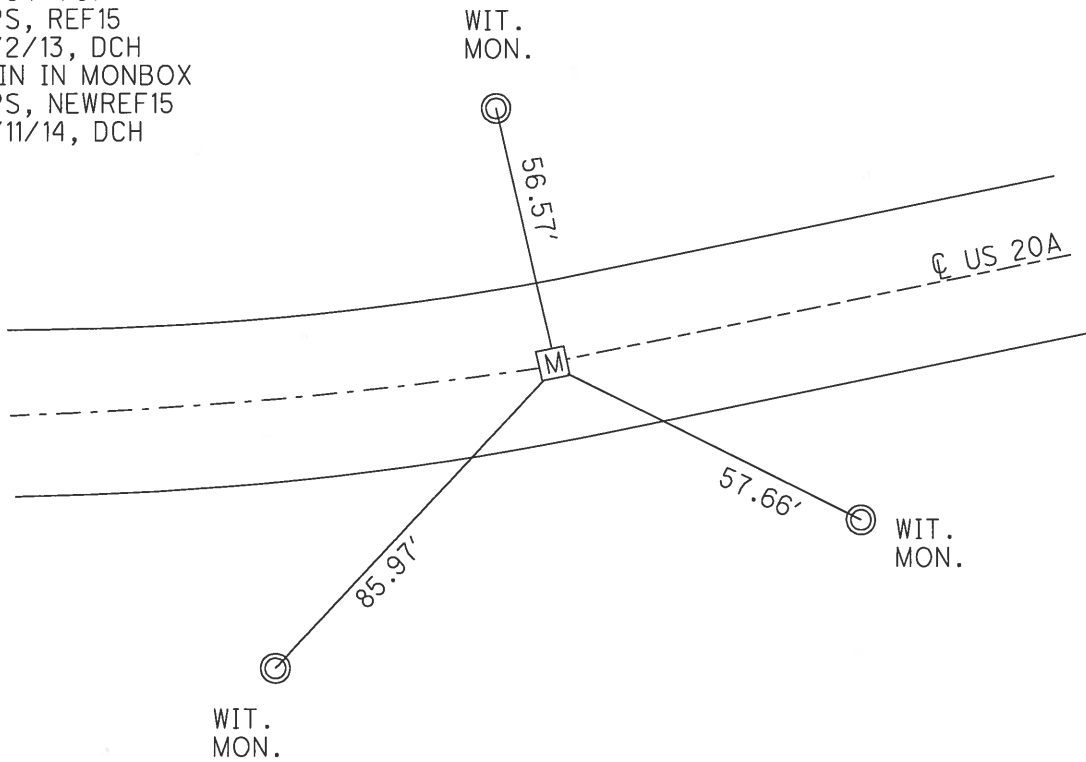
O.D.O.T. DISTRICT 2 SURVEY OFFICE (USE ONLY)

PERSONNEL _____ REFERENCE NO. 17 A SHEET 18 OF 48
 NOTES STONE DATE 7/16/71 ROUTE US 20A
 H.C. MICHALAK WEATHER WARM COUNTY LUCAS
 R.C. SCHRODER TEMP. 75° TOWNSHIP SWANTON
 _____ KEFFER _____ SECTION 11
 _____ T 7 N R 9 E

TYPE MONUMENT MONBOX
 ON SURFACE - ~~BELOW~~ ON _____
 LEFT - ☉ PAV'T - RIGHT - _____
11.3' TO RT EDGE PAVEMENT
 S.L.M. 246+32.2
 GRID: NORTHING 697949.522 EASTING: 1611886.756



RECORD: P.T.
 FD MONBOX
 6/28/85, IS
 BFD MONBOX
 BENT 3/4" IPIN
 SHOT TOP
 GPS, REF15
 8/2/13, DCH
 IPIN IN MONBOX
 GPS, NEWREF15
 4/11/14, DCH



O.D.O.T. DISTRICT 2 SURVEY OFFICE (USE ONLY)

PERSONNEL

REFERENCE NO. 18

SHEET 19 OF 52

NOTES RHOADES
 H.C. AUBLE
 R.C. NIESE
WHITAKER

DATE 8/10/22
 WEATHER WARM
 TEMP. 70°

ROUTE US 20A
 COUNTY LUCAS
 TOWNSHIP SWANTON
 SECTION 11
 T 7 N R 9 E

DWG BY RHOADES PID PAVETRAIN

TYPE MONUMENT 1/2" IPIN

~~ON SURFACE~~ - BELOW 2"

OFFSET \odot PAVEMENT - LT : RT

12.4' N. TO LT EDGE PAVEMENT

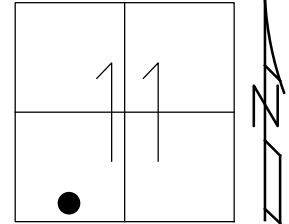
STATION: 254+76.8

HORIZ.DATUM: NAD83 2011

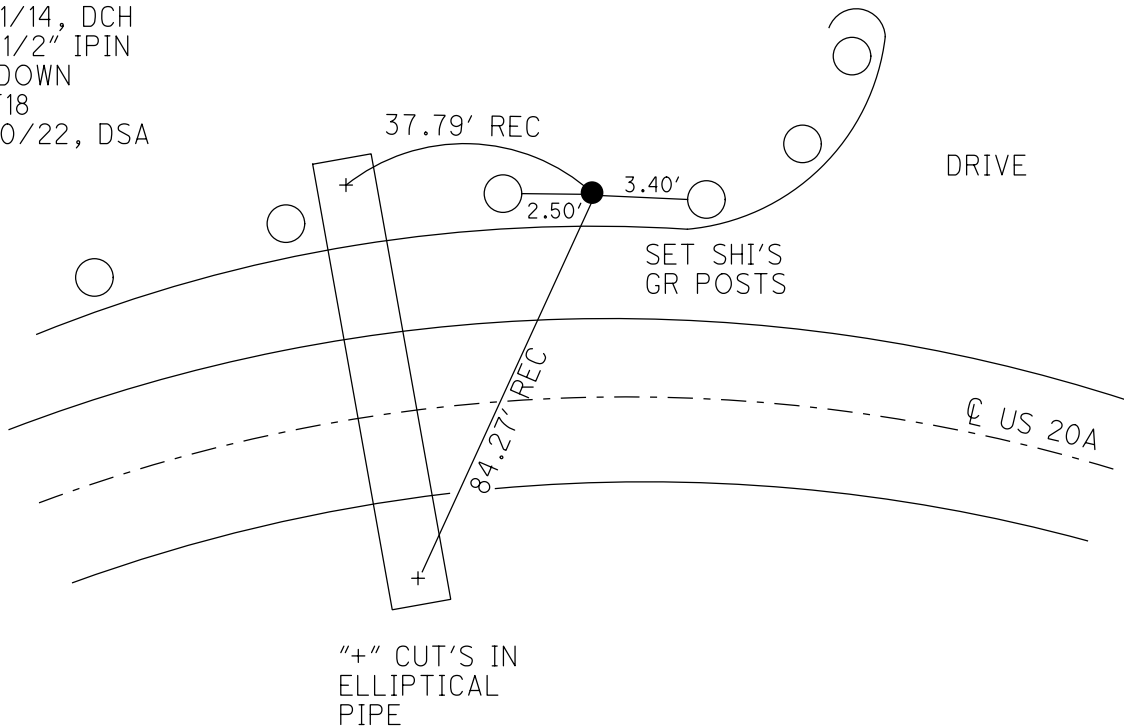
GEOID: NAVD88 2018

GRID: NORTHING: 698130.442

EASTING: 1612713.809



RECORD: P.I.
 FD MONBOX
 W/5/8" IPIN
 7/16/71, IRS
 FD IPIN IN CMON
 6/28/85, IS
 FD 5/8" IPIN
 REF16
 8/2/13, DCH
 NEWREF16
 4/11/14, DCH
 FD 1/2" IPIN
 2" DOWN
 REF18
 8/10/22, DSA



O.D.O.T. DISTRICT 2 SURVEY OFFICE (USE ONLY)

PERSONNEL

REFERENCE NO. 18 A

SHEET 20 OF 52

NOTES RHOADES

DATE 8/10/22

ROUTE US 20A

H.C. AUBLE

WEATHER WARM

COUNTY LUCAS

R.C. NIESE

TEMP. 70°

TOWNSHIP SWANTON

WHITAKER

SECTION 11

DWG BY RHOADES

PID PAVETRAIN

T 7 N R 9 E

TYPE MONUMENT MAG/WASHER

ON SURFACE - ~~BELOW~~ ON

OFFSET CL PAVEMENT 2' LT : RT

13' TO RT EDGE PAVEMENT

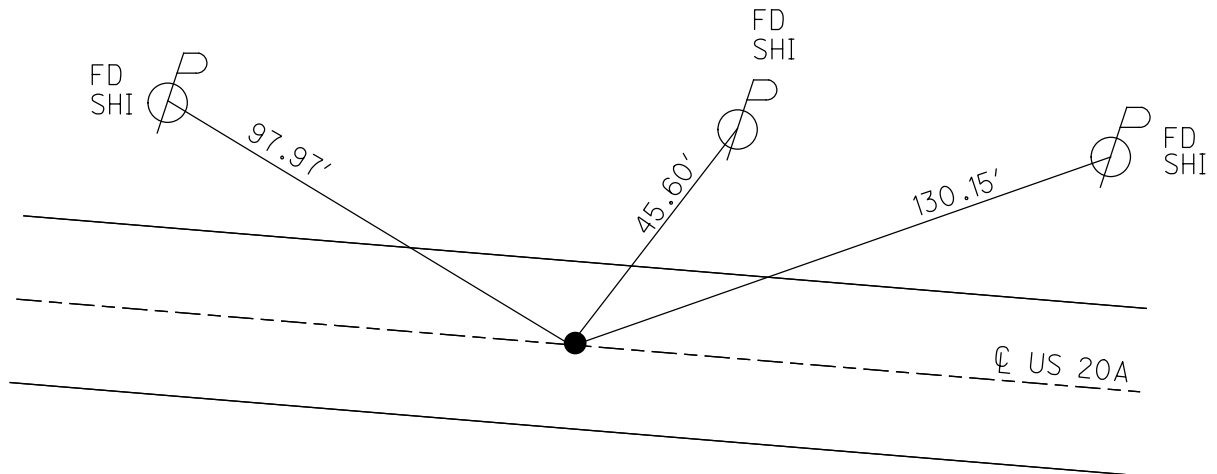
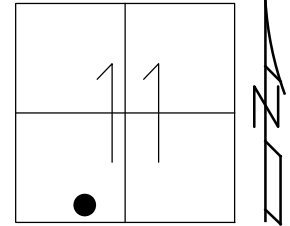
STATION: 257+45.38

HORIZ.DATUM: NAD83 2011

GEOID: NAVD88 2018

GRID: NORTHING: 698109.621

EASTING: 1612983.612

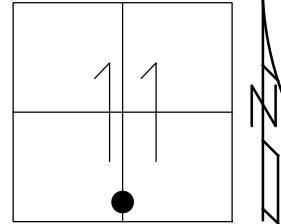


RECORD:
 FD 1 1/2" IPIN IN CMON
 7/16/71, IS
 FD 1 1/2" SQ BOLT IN
 MON BOX SET BY
 LUCAS CO ENGR
 6/28/85, IS
 FD SQ BOLT
 2" DOWN
 REF17
 8/2/13, DCH
 SET MAG NAIL
 NEWREF17
 4/11/14, DCH
 FD MAG/WASHER
 REFA18
 8/10/22, DSA
 11/21/22, TDN

O.D.O.T. DISTRICT 2 SURVEY OFFICE (USE ONLY)

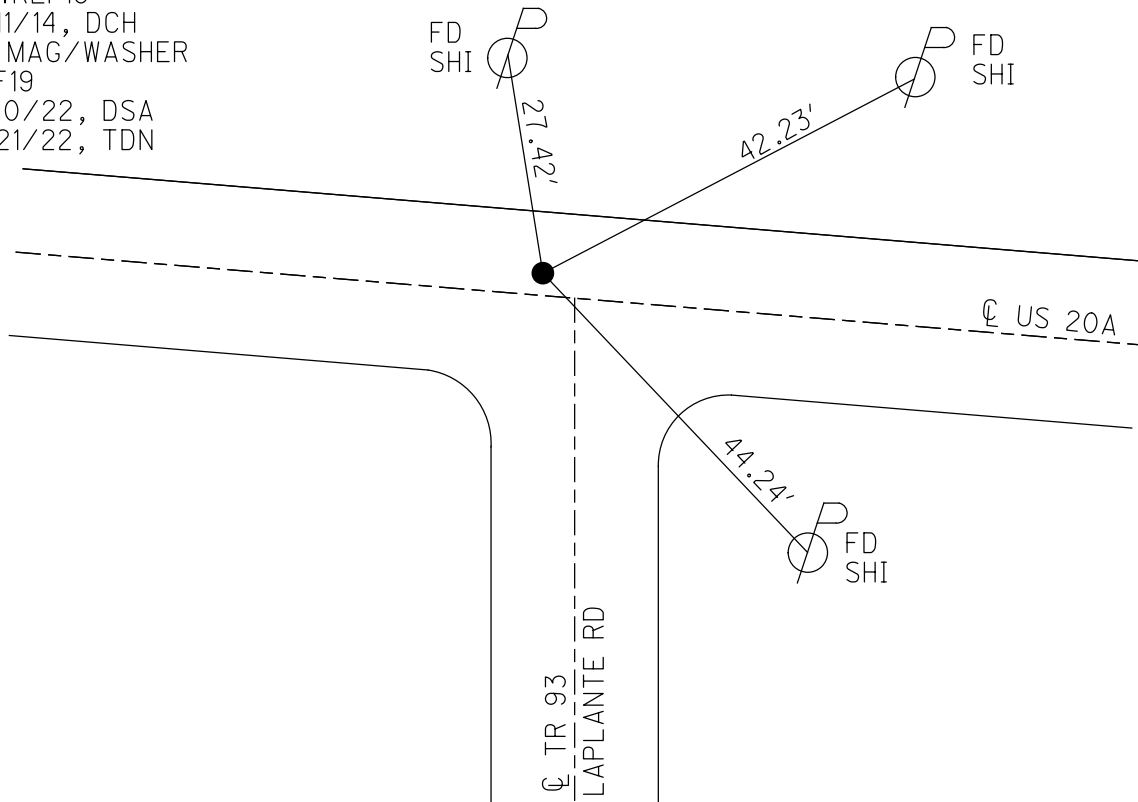
PERSONNEL _____ REFERENCE NO. 19 SHEET 21 OF 52
 NOTES RHOADES DATE 8/10/22 ROUTE US 20A
 H.C. AUBLE WEATHER WARM COUNTY LUCAS
 R.C. NIESE TEMP. 70° TOWNSHIP MONCLOVA
 WHITAKER SECTION 11
 DWG BY RHOADES PID PAVETRAIN T 7 N R 9 E

TYPE MONUMENT MAG/WASHER
 ON SURFACE - ~~BELOW~~ ON
 OFFSET \odot PAVEMENT 1.5' LT : ~~RT~~
- TO - EDGE PAVEMENT
 STATION: 266+71.23



HORZ. DATUM: NAD83 2011 GEOID: NAVD88 2018
 GRID: NORTHING: 698039.157 EASTING: 1613906.795

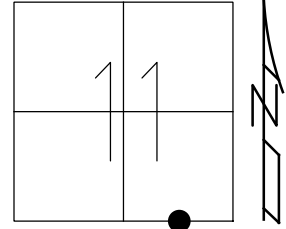
RECORD:
 FD R.R.SPIKE
 3" DOWN
 6/28/85, I.S.
 FD R.R.SPIKE
 2" DOWN
 REF18
 8/5/13, DCH
 SET MAG NAIL
 NEWREF18
 4/11/14, DCH
 FD MAG/WASHER
 REF19
 8/10/22, DSA
 11/21/22, TDN



O.D.O.T. DISTRICT 2 SURVEY OFFICE (USE ONLY)

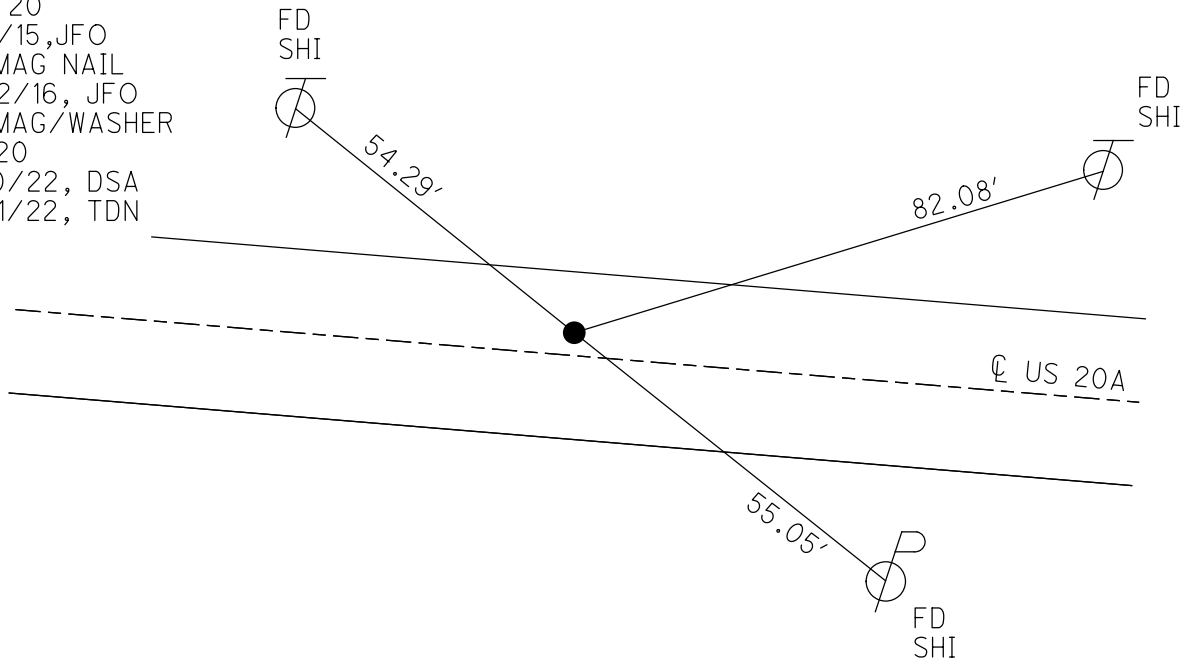
PERSONNEL _____ REFERENCE NO. 20 SHEET 22 OF 52
 NOTES RHOADES DATE 8/10/22 ROUTE US 20A
 H.C. AUBLE WEATHER SUNNY COUNTY LUCAS
 R.C. NIESE TEMP. 72° TOWNSHIP MONCLOVA
 WHITAKER SECTION 11
 DWG BY RHOADES PID PAVETRAIN T 7 N R 9 E

TYPE MONUMENT MAG/WASHER
 ON SURFACE - ~~BELOW~~ ON
 OFFSET ☉ PAVEMENT 4' LT : ~~RT~~
7.2' TO LT EDGE PAVEMENT
 STATION: 279+94.20



HORZ.DATUM: NAD83 2011 GEOID: NAVD88 2018
 GRID: NORTHING: 697896.766 EASTING: 1615222.060

RECORD:
 FD R.R.SPIKE
 3" DOWN
 6/28/85, IS
 FD R.R.SPIKE
 2" DOWN
 REF19
 8/5/13, DCH
 SET MAG NAIL
 NEWREF19
 4/11/14, DCH
 FD MAG NAIL
 REF 20
 8/3/15, JFO
 FD MAG NAIL
 6/22/16, JFO
 FD MAG/WASHER
 REF20
 8/10/22, DSA
 11/21/22, TDN



O.D.O.T. DISTRICT 2 SURVEY OFFICE (USE ONLY)

PERSONNEL _____ REFERENCE NO. 21 SHEET 23 OF 52

NOTES RHOADES DATE 8/3/15 ROUTE US 20A
 H.C. O'DONNELL WEATHER SUNNY COUNTY LUCAS
 R.C. RHOADES TEMP. 67° TOWNSHIP MONCLOVA
 _____ KEFFER _____ SECTION 13
 _____ T 7 N R 9 E

TYPE MONUMENT P.K. NAIL

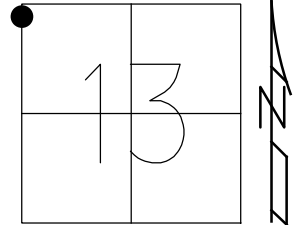
~~ON SURFACE~~ - BELOW 1 1/2"

LEFT - ☉ PAV'T - RIGHT -

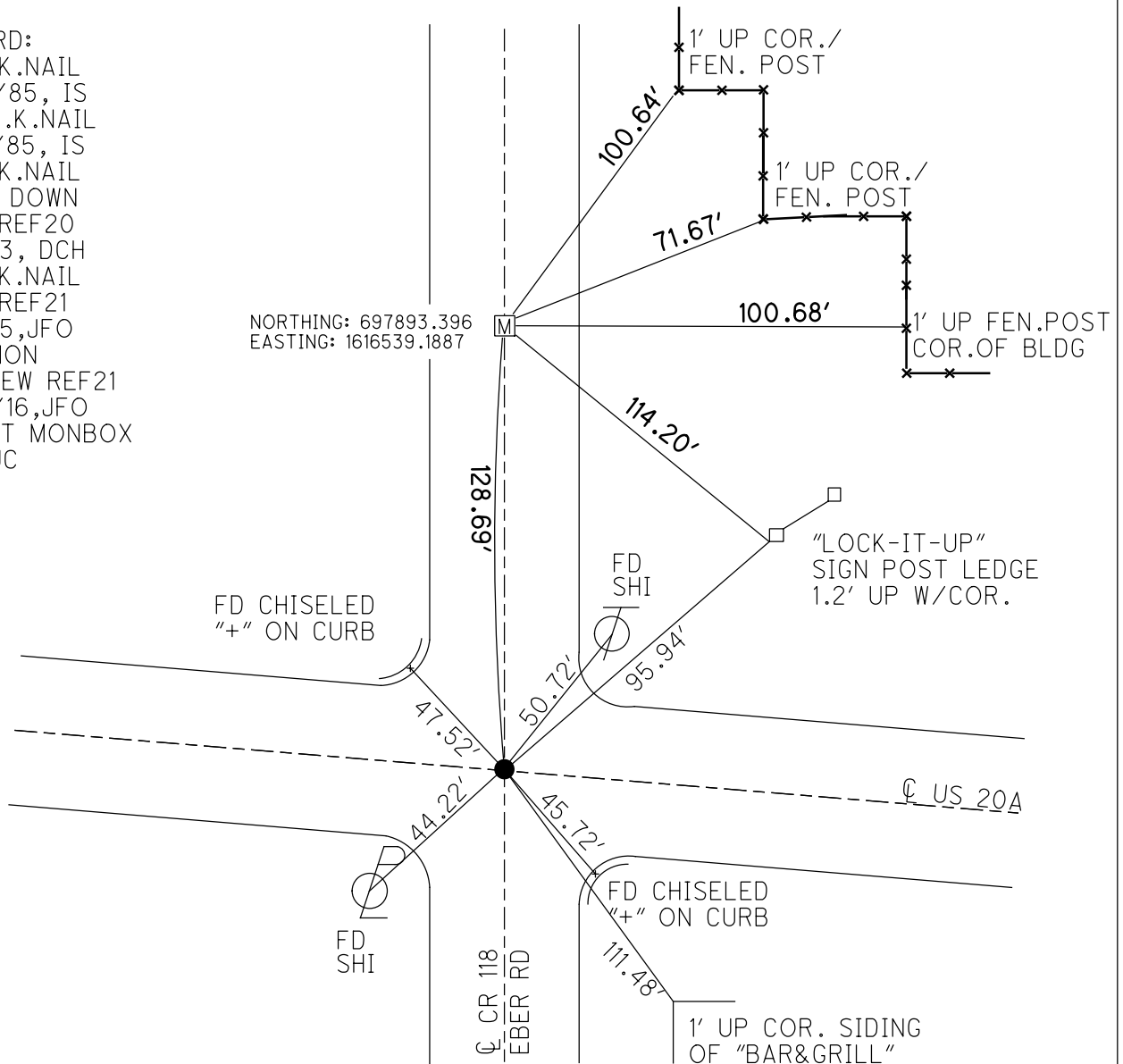
- TO - EDGE PAVEMENT

S.L.M. 293+20.11

GRID: NORTHING: 697744.679 EASTING: 1616539.202



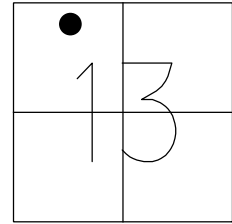
RECORD:
 FD P.K.NAIL
 4/30/85, IS
 SET P.K.NAIL
 6/28/85, IS
 FD P.K.NAIL
 1 1/2" DOWN
 GPS, REF20
 8/5/13, DCH
 FD P.K.NAIL
 GPS, REF21
 8/3/15, JFO
 FD CMON
 GPS, NEW REF21
 6/22/16, JFO
 FD SET MONBOX
 REFLUC



O.D.O.T. DISTRICT 2 SURVEY OFFICE (USE ONLY)

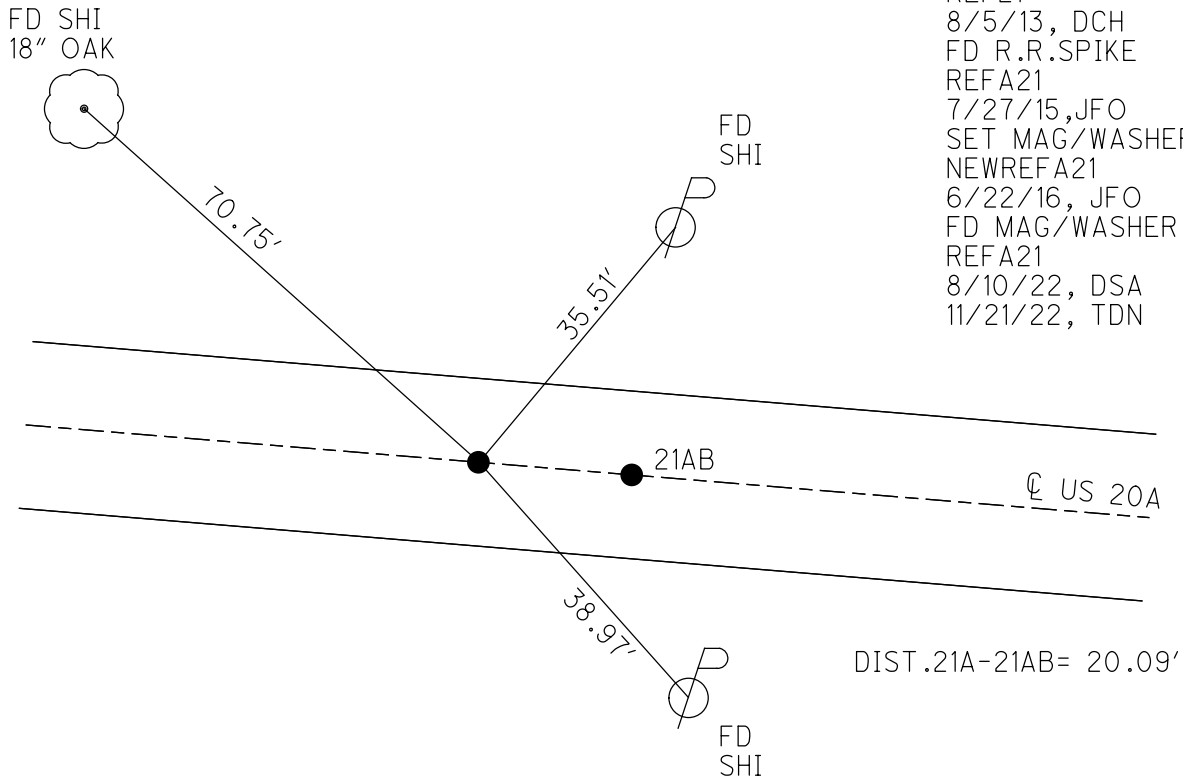
PERSONNEL _____ REFERENCE NO. 21 A SHEET 24 OF 52
 NOTES RHOADES DATE 8/10/22 ROUTE US 20A
 H.C. AUBLE WEATHER SUNNY COUNTY LUCAS
 R.C. NIESE TEMP. 72° TOWNSHIP MONCLOVA
 WHITAKER SECTION 13
 DWG BY RHOADES PID PAVETRAIN T 7 N R 9 E

TYPE MONUMENT MAG/WASHER
 ON SURFACE - ~~BELOW~~ ON
 OFFSET $\text{\textcircled{C}}$ PAVEMENT ON LT : RT
- TO - EDGE PAVEMENT
 STATION: 306+47.19



HORZ.DATUM: NAD83 2011 GEOID: NAVD88 2018
 GRID: NORTHING: 697558.534 EASTING: 1617853.073

RECORD:
 FD R.R.SPIKE
 3" DOWN
 7/1/85, IS
 FD R.R.SPIKE
 2" DOWN
 REF21
 8/5/13, DCH
 FD R.R.SPIKE
 REFA21
 7/27/15, JFO
 SET MAG/WASHER
 NEWREFA21
 6/22/16, JFO
 FD MAG/WASHER
 REFA21
 8/10/22, DSA
 11/21/22, TDN



O.D.O.T. DISTRICT 2 SURVEY OFFICE (USE ONLY)

PERSONNEL

REFERENCE NO. 21 AB

SHEET 25 OF 52

NOTES RHOADES DATE 8/10/22
 H.C. AUBLE WEATHER SUNNY
 R.C. NIESE TEMP. 72°
WHITAKER

ROUTE US 20A
 COUNTY LUCAS
 TOWNSHIP MONCLOVA
 SECTION 13
 T 7 N R 9 E

DWG BY RHOADES PID PAVETRAN

TYPE MONUMENT MAG/WASHER

ON SURFACE - ~~BELOW~~ ON

OFFSET ☉ PAVEMENT ON LT : RT

- TO - EDGE PAVEMENT

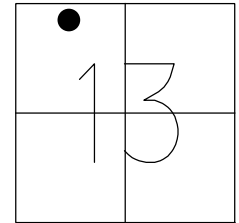
STATION: 306+67.27

HORZ.DATUM: NAD83 2011

GEOID: NAVD88 2018

GRID: NORTHING: 697555.771

EASTING: 1617872.972



FD SHI
18" OAK



87.99'

FD SHI



28.51'

21A



☉ US 20A

DIST. 21A-21AB = 20.09'

29.70'

FD SHI

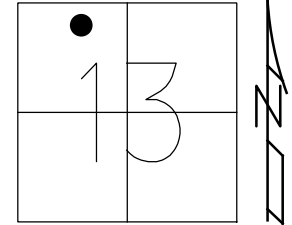


RECORD:
 FD R.R.SPIKE
 3" DOWN
 7/1/85, IS
 FD R.R.SPIKE
 2" DOWN
 REF22
 8/5/13, DCH
 FD R.R.SPIKE
 REFAB21
 7/27/15, JFO
 SET MAG/WASHER
 NEWREFAB21
 6/22/16, JFO
 FD MAG/WASHER
 REFAB21
 8/10/22, DSA
 11/21/22, TDN

O.D.O.T. DISTRICT 2 SURVEY OFFICE (USE ONLY)

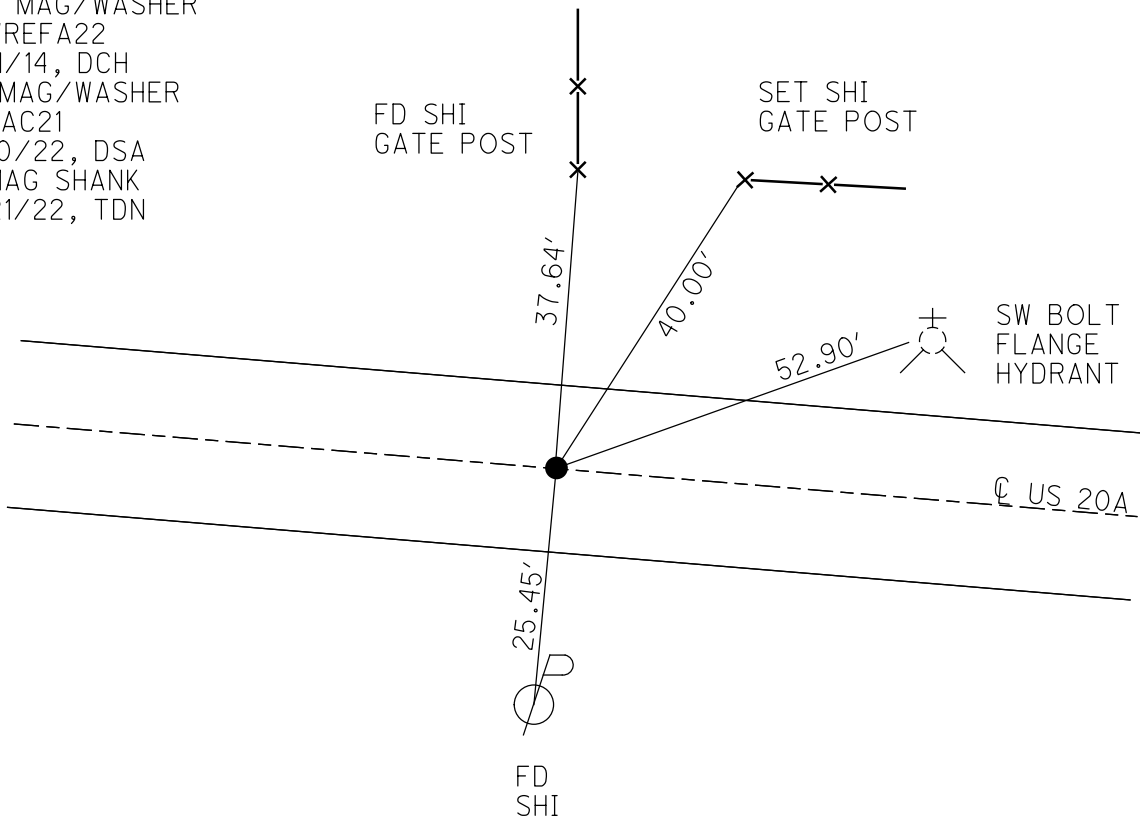
PERSONNEL _____ REFERENCE NO. 21 AC SHEET 26 OF 52
 NOTES RHOADES DATE 8/10/22 ROUTE US 20A
 H.C. AUBLE WEATHER SUNNY COUNTY LUCAS
 R.C. NIESE TEMP. 70° TOWNSHIP MONCLOVA
 _____ WHITAKER SECTION 13
 DWG BY RHOADES PID PAVETRAIN T 7 N R 9 E

TYPE MONUMENT MAG/WASHER
 ON SURFACE - ~~BELOW~~ ON
 OFFSET 0.3' LT : ~~RT~~
 _____ TO _____ EDGE PAVEMENT
 STATION: 311+44



HORZ.DATUM: NAD83 2011 GEOID: NAVD88 2018
 GRID: NORTHING: 697488.674 EASTING: 1618344.672

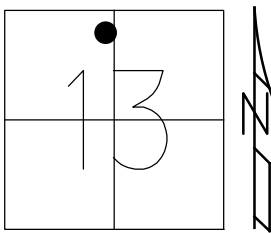
RECORD:
 FD MAG NAIL
 REFA22
 8/5/13, DCH
 SET MAG/WASHER
 NEWREFA22
 4/11/14, DCH
 FD MAG/WASHER
 REFAC21
 8/10/22, DSA
 FDMAG SHANK
 11/21/22, TDN



O.D.O.T. DISTRICT 2 SURVEY OFFICE (USE ONLY)

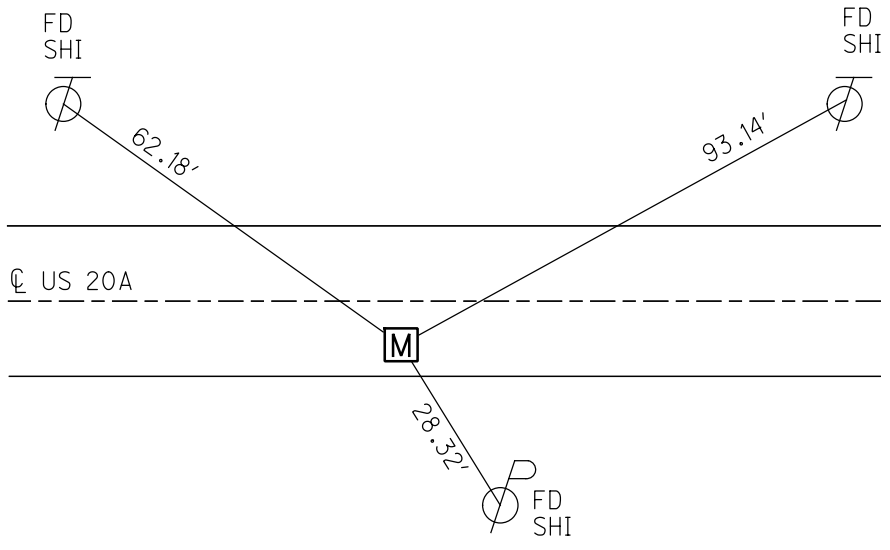
PERSONNEL _____ REFERENCE NO. 21 B SHEET 27 OF 52
 NOTES RHOADES DATE 8/10/22 ROUTE US 20A
 H.C. AUBLE WEATHER SUNNY COUNTY LUCAS
 R.C. NIESE TEMP. 72° TOWNSHIP MONCLOVA
 _____ WHITAKER _____ SECTION 13
 DWG BY RHOADES PID PAVETRAIN T 7 N R 9 E

TYPE MONUMENT MONBOX W/1" IPIN
 ON SURFACE - ~~BELOW~~ ON
 OFFSET ☉ PAVEMENT _____ - _____ LT : RT
1.3' TO RT EDGE PAVEMENT
 STATION: 314+25.37



HORZ.DATUM: NAD83 2011 GEOID: NAVD88 2012A
 GRID: NORTHING: 697448.911 EASTING: 1618623.781

RECORD: P.I.
 7-20-71
 FD R.R.SPIKE
 4-30-85, IRS
 3" DOWN
 6-28-85, IRS
 FD R.R.SPIKE BENT
 3" DOWN
 REF23
 8-5-13, EBW
 SET MAG/WASHER
 NEWREF23
 4-11-14, DCH
 FD R.R.SPIKE
 REFB21
 7/27/15, JFO
 FD MAG/WASHER
 REFB21
 6/22/16, JFO
 FD MAG/WASHER
 N: 697448.945
 E: 1618623.704
 2/26/19
 DENNIS PRITSCHER
 COUNTY SURVEYOR
 FD MONBOX
 W/ 1" IPIN
 NEWSTA31425
 4/13/21, JFO
 REFB21
 8/10/22, DSA
 11/21/22, TDN



O.D.O.T. DISTRICT 2 SURVEY OFFICE (USE ONLY)

PERSONNEL _____ REFERENCE NO. 22 SHEET 28 OF 52
NOTES O'DONNELL DATE 4/13/21 ROUTE US 20A
H.C. O'DONNELL WEATHER FAIR COUNTY LUCAS
R.C. RHOADES TEMP. 52° TOWNSHIP MONCLOVA
DWG BY RHOADES PID 106393 SECTION 13
T 7 N R 9 E

TYPE MONUMENT MONBOX W/1" IPIN

~~ON SURFACE~~ - BELOW ON

OFFSET ☉ PAVEMENT _____ - _____ LT : RT

1.5' TO RT EDGE PAVEMENT

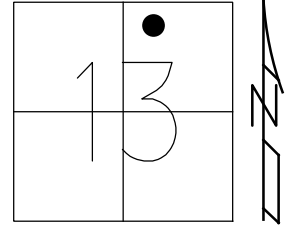
STATION: 323+95.68

HORZ.DATUM: NAD83 2011

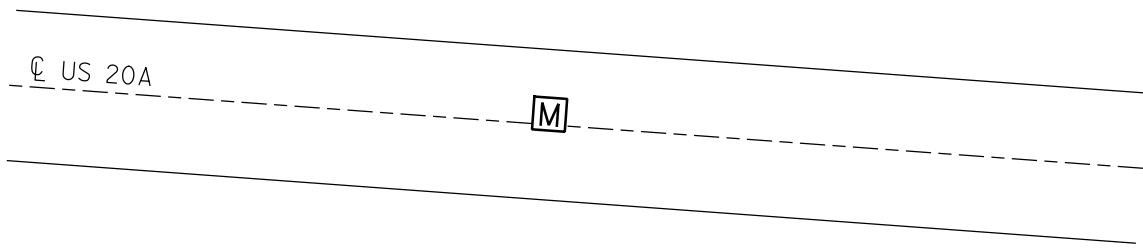
GEOID: NAVD88 2012A

GRID: NORTHING: 697455.893

EASTING: 1619670.467



RECORD:
FD MONBOX
W/1" IPIN
NEWSTA32395
4/13/21, JFO



O.D.O.T. DISTRICT 2 SURVEY OFFICE (USE ONLY)

PERSONNEL

REFERENCE NO. 23

SHEET 29 OF 52

NOTES O'DONNELL

DATE 4/13/21

ROUTE US 20A

H.C. O'DONNELL

WEATHER FAIR

COUNTY LUCAS

R.C. RHOADES

TEMP. 52°

TOWNSHIP MONCLOVA

SECTION 13

DWG BY _____ PID 106393

T 7 N R 10 E

TYPE MONUMENT CMON W/1" IPIN

~~ON SURFACE~~ - BELOW ON

OFFSET 0 PAVEMENT _____ LT : RT

_____ TO _____ EDGE PAVEMENT

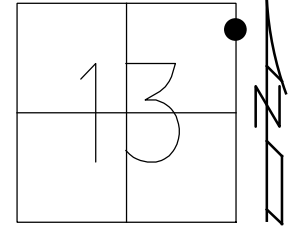
STATION: 346+84.96

HORZ.DATUM: NAD83 2011

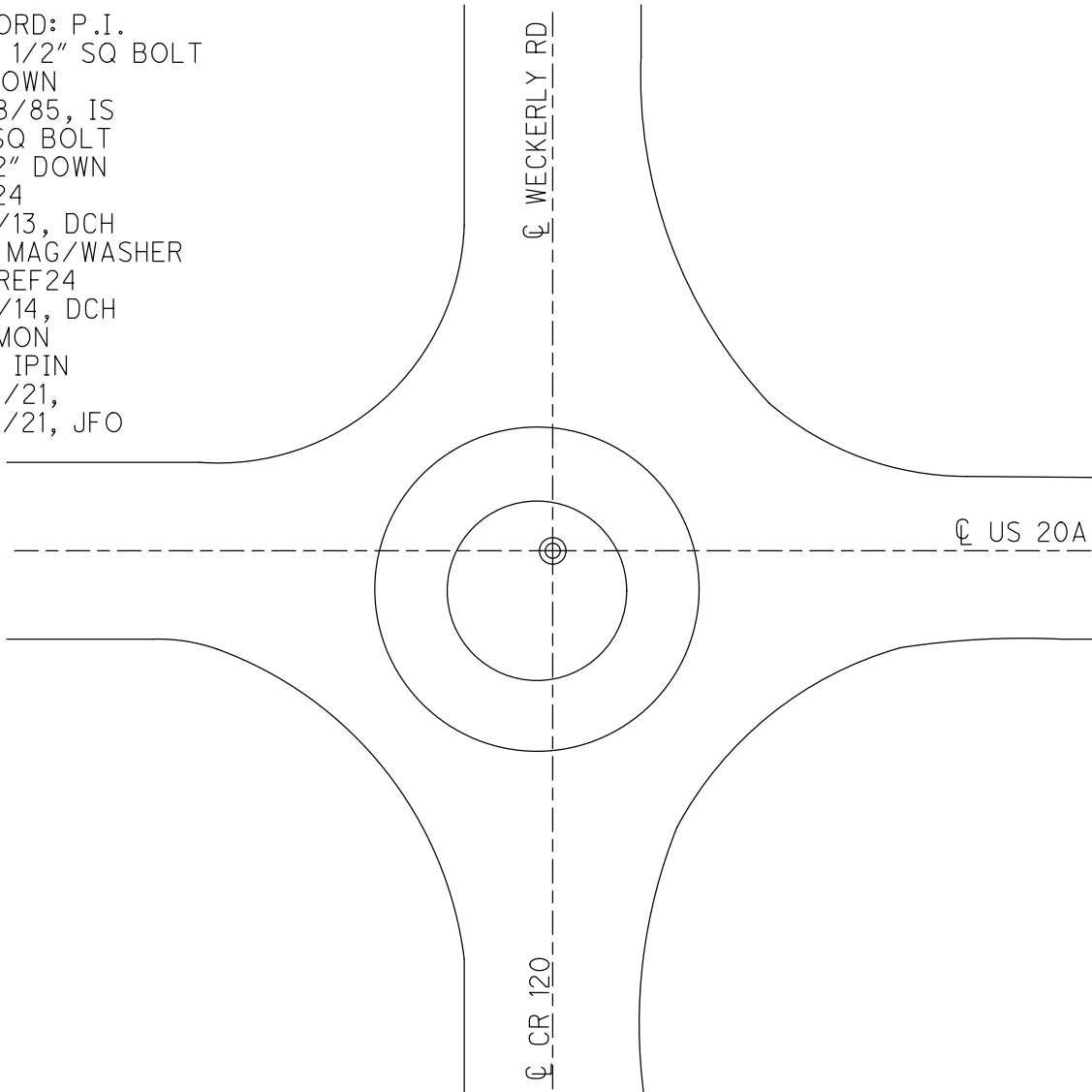
GEOID: NAVD88 2012A

GRID: NORTHING: 697422.829

EASTING: 1619593.684



RECORD: P.I.
FD 1 1/2" SQ BOLT
3" DOWN
6/28/85, IS
FD SQ BOLT
1 1/2" DOWN
REF24
8/5/13, DCH
SET MAG/WASHER
NEWREF24
4/11/14, DCH
FDCMON
W/1" IPIN
4/13/21,
5/21/21, JFO



CR 120

O.D.O.T. DISTRICT 2 SURVEY OFFICE (USE ONLY)

PERSONNEL

REFERENCE NO. 24

SHEET 30 OF 52

NOTES RHOADES

DATE 8/10/22

ROUTE US 20A

H.C. AUBLE

WEATHER SUNNY

COUNTY LUCAS

R.C. NIESE
WHITAKER

TEMP. 72°

TOWNSHIP MONCLOVA

DWG BY RHOADES

PID PAVETRAIN

SECTION 31

T 2

TYPE MONUMENT MNOBOX W/1" IPIN

~~ON SURFACE~~ - BELOW ON

OFFSET Q PAVEMENT 1' ~~LT~~ : RT

- TO - EDGE PAVEMENT

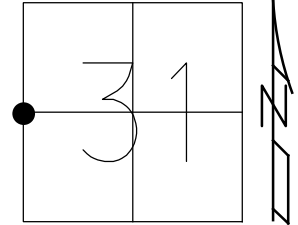
STATION: 362+03.62

HORIZ.DATUM: NAD83 2011

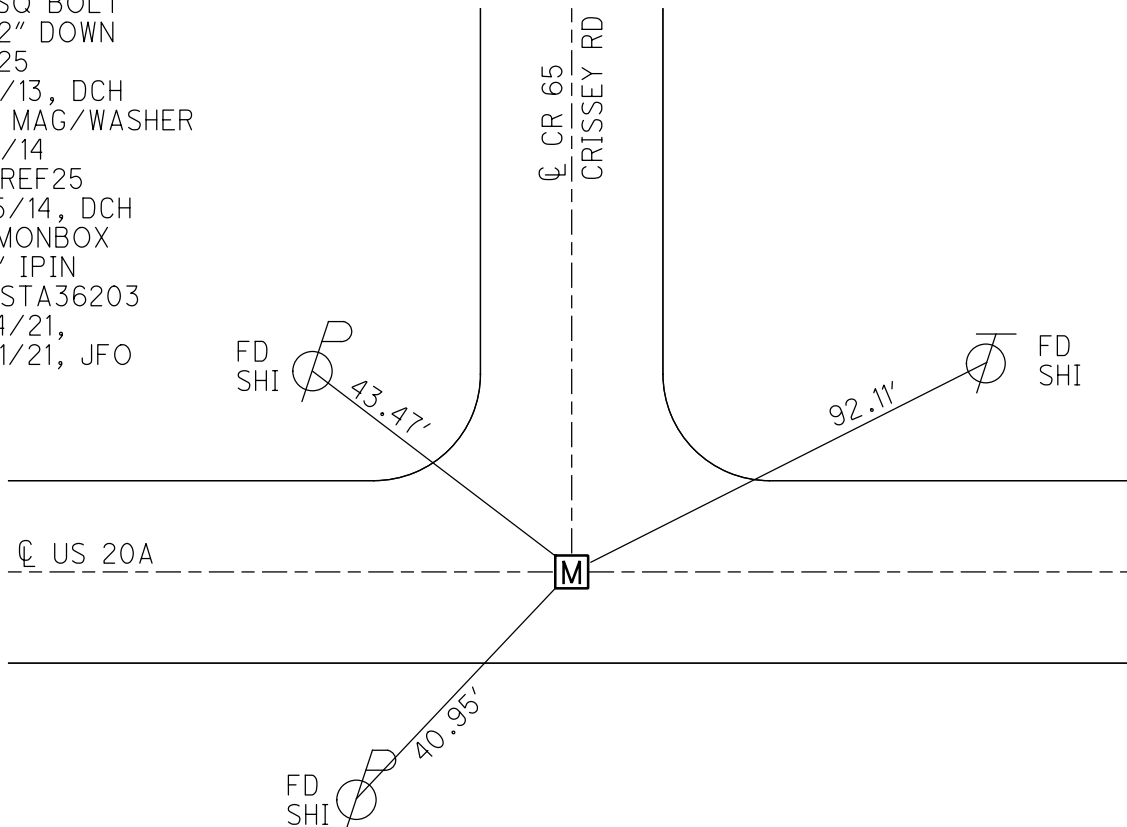
GEOID: NAVD88 2012A

GRID: NORTHING: 697264.955

EASTING: 1623398.163



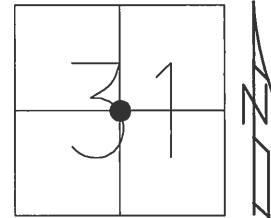
RECORD:
FD 1 1/2" SQ BOLT
3" DOWN
6/28/85, IS
FD SQ BOLT
1 1/2" DOWN
REF25
8/5/13, DCH
SET MAG/WASHER
4/11/14
NEWREF25
5/15/14, DCH
FD MONBOX
W/1" IPIN
NEWSTA36203
4/14/21,
5/21/21, JFO



O.D.O.T. DISTRICT 2 SURVEY OFFICE (USE ONLY)

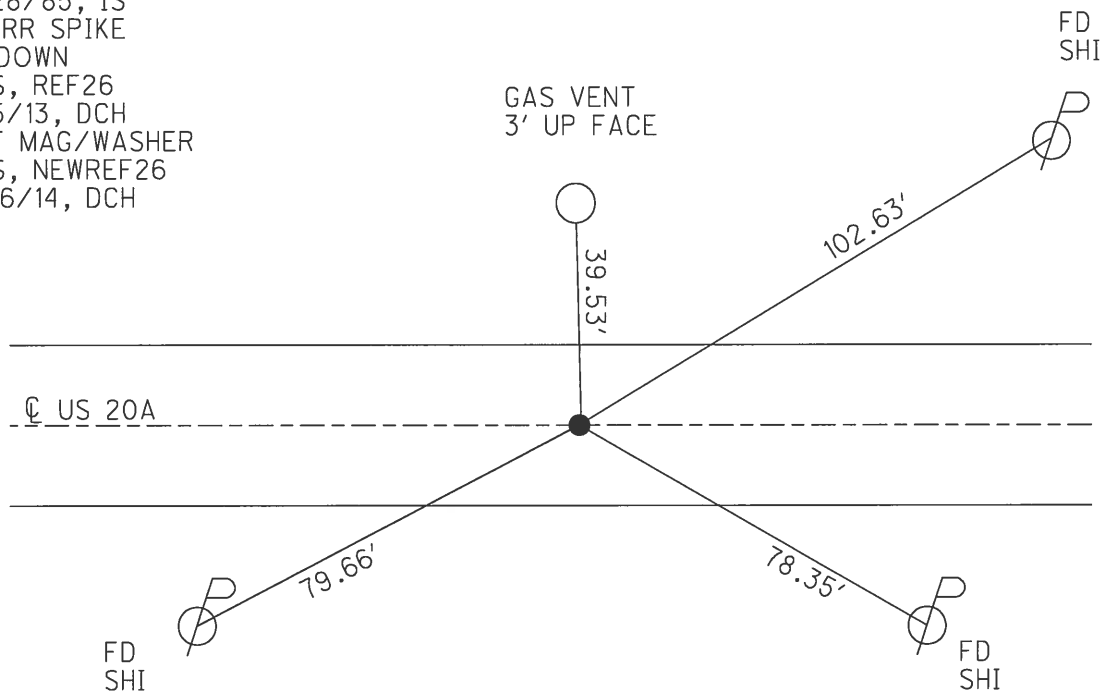
PERSONNEL _____ REFERENCE NO. 25 SHEET 30 OF 48
 NOTES WESTFALL DATE 8/5/13 ROUTE US 20A
 H.C. ROUSOS WEATHER SUNNY COUNTY LUCAS
 R.C. WESTFALL TEMP. 67° TOWNSHIP MONCLOVA
 _____ KEFFER _____ SECTION 31
 _____ T 2

TYPE MONUMENT RR SPIKE
~~ON SURFACE~~ - BELOW 2"
 LEFT - ☉ PAV'T - RIGHT - _____
 - _____ TO - _____ EDGE PAVEMENT
 S.L.M. _____ 388+13.86



GRID: NORTHING: 697224.711 EASTING: 1626008.459

RECORD:
 FD RR SPIKE
 3" DEEP
 6/28/85, IS
 FD RR SPIKE
 2" DOWN
 GPS, REF26
 8/5/13, DCH
 SET MAG/WASHER
 GPS, NEWREF26
 4/16/14, DCH



O.D.O.T. DISTRICT 2 SURVEY OFFICE (USE ONLY)

PERSONNEL _____ REFERENCE NO. 26 SHEET 31 OF 48

NOTES WESTFALL DATE 8/5/13 ROUTE US 20A
 H.C. ROUSOS WEATHER SUNNY COUNTY LUCAS
 R.C. WESTFALL TEMP. 67° TOWNSHIP MONCLOVA
 _____ KEFFER _____ SECTION 31
 _____ T 2

TYPE MONUMENT RR SPIKE

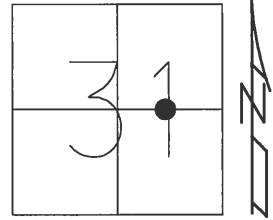
~~ON SURFACE~~ - BELOW 2"

LEFT - ☉ PAV'T - RIGHT - _____

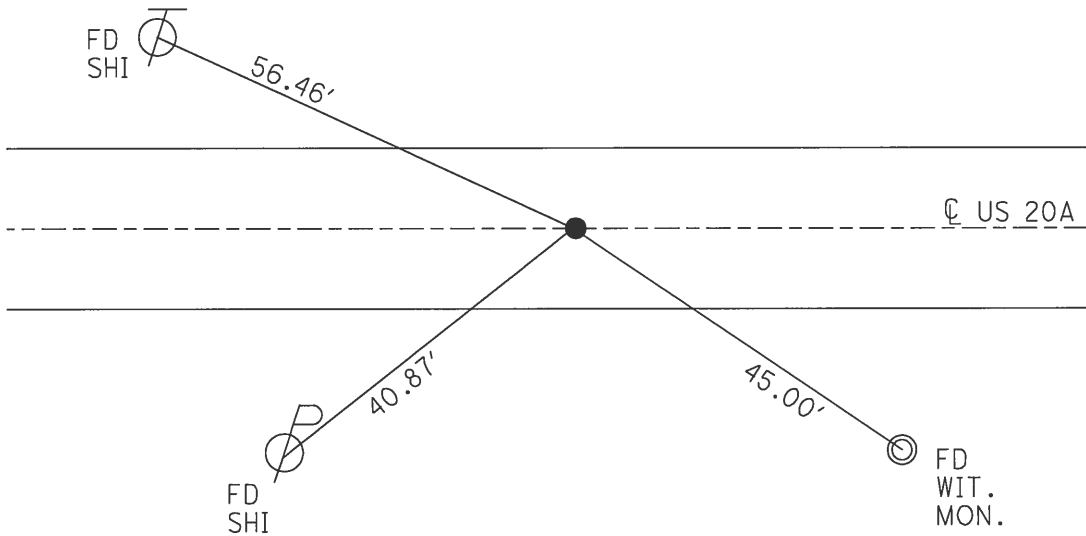
_____ TO _____ EDGE PAVEMENT

S.L.M. 400+98.10

GRID: NORTHING: 697204.415 EASTING: 1627292.456



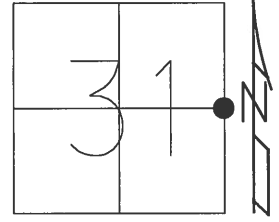
RECORD:
 FD RR SPIKE
 3" DEEP
 7/1/85, IS
 FD RR SPIKE
 2" DOWN
 GPS, REF27
 8/5/13, DCH
 SET MAG/WASHER
 GPS, NEWREF27
 4/16/14, DCH



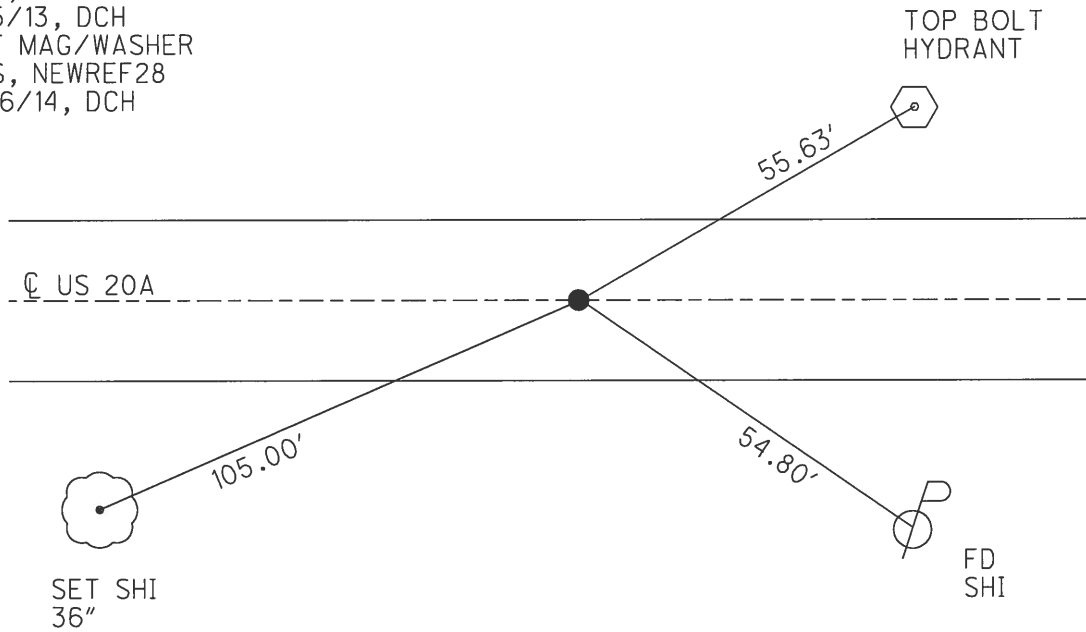
O.D.O.T. DISTRICT 2 SURVEY OFFICE (USE ONLY)

PERSONNEL _____ REFERENCE NO. 27 SHEET 32 OF 48
 NOTES WESTFALL DATE 8/5/13 ROUTE US 20A
 H.C. ROUSOS WEATHER SUNNY COUNTY LUCAS
 R.C. WESTFALL TEMP. 67° TOWNSHIP MONCLOVA
 _____ KEFFER _____ SECTION 31
 _____ T 2

TYPE MONUMENT P.K.NAIL
 ON SURFACE - ~~BELOW~~ ON _____
 LEFT - ☉ PAV'T - RIGHT - _____
 - TO - EDGE PAVEMENT
 S.L.M. 413+82.68
 GRID: NORTHING: 697184.779 EASTING: 1628577.034



RECORD:
 FD P.K.NAIL
 OVER IRON BOLT
 3" DEEP. 4/30/85
 SET P.K.NAIL
 7/1/85, IS
 FD P.K.NAIL
 GPS, REF28
 8/5/13, DCH
 SET MAG/WASHER
 GPS, NEWREF28
 4/16/14, DCH



O.D.O.T. DISTRICT 2 SURVEY OFFICE (USE ONLY)

PERSONNEL

REFERENCE NO. 28

SHEET 33 OF 49

NOTES WESTFALL

DATE 8-5-13

ROUTE US 20A

H.C. ROUSOS

WEATHER SUNNY

COUNTY LUCAS

R.C. WESTFALL

TEMP. 67°

TOWNSHIP MONCLOVA

KEFFER

SECTION 32

DWG BY JAMES PID NO PID

T 2 N

TYPE MONUMENT SQUARE BOLT

~~ON SURFACE~~ - BELOW 2"

OFFSET \odot PAVEMENT - _____ LT : RT

- _____ TO _____ EDGE PAVEMENT

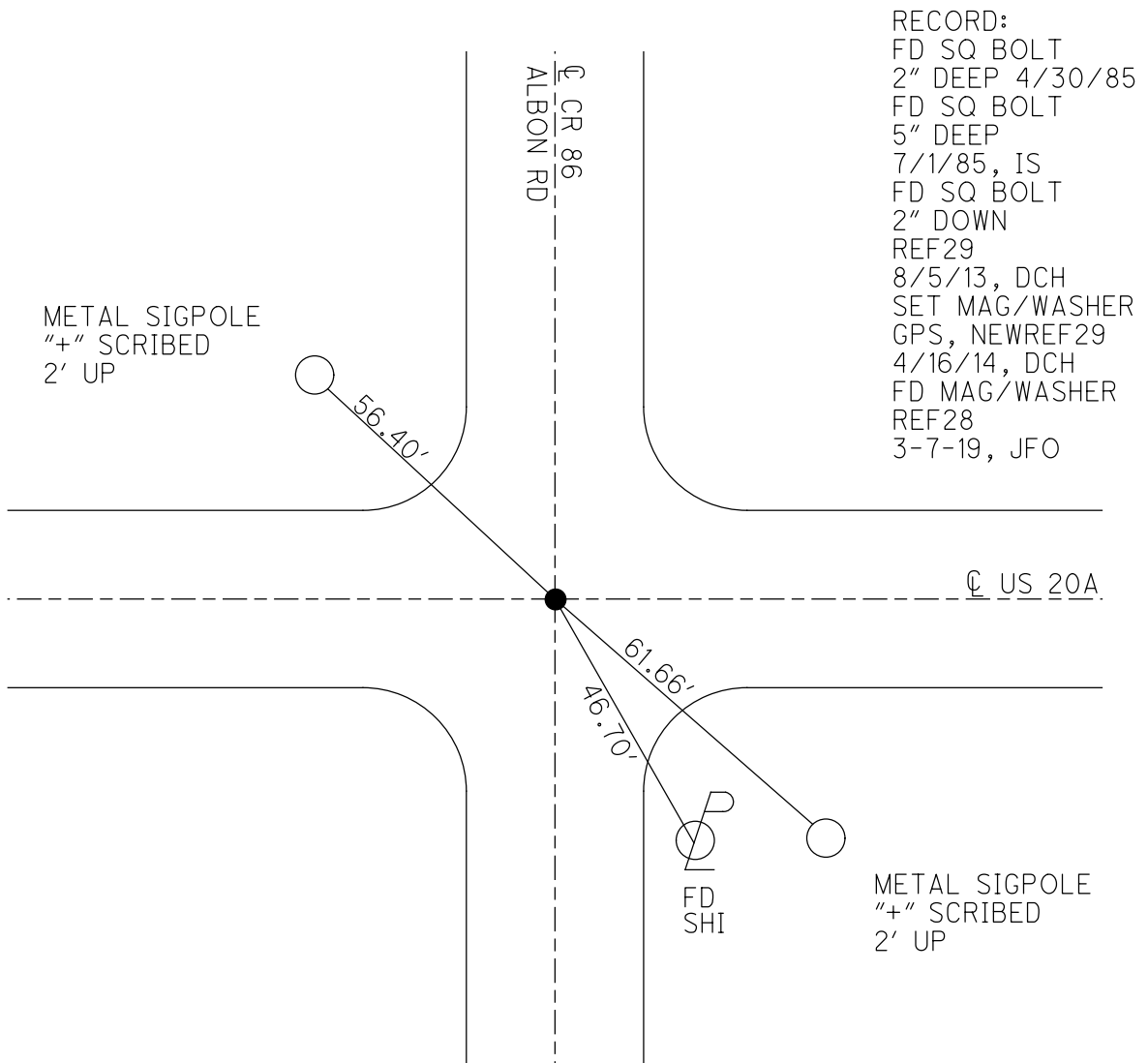
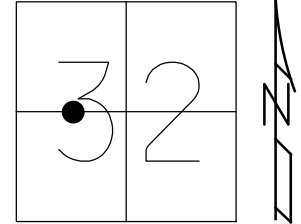
STATION: 427+21.95

HORIZ.DATUM: NAD83 2011

GEOID: NAVD88 2012A

GRID: NORTHING: 697166.342

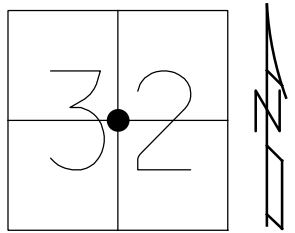
EASTING: 1629916.034



O.D.O.T. DISTRICT 2 SURVEY OFFICE (USE ONLY)

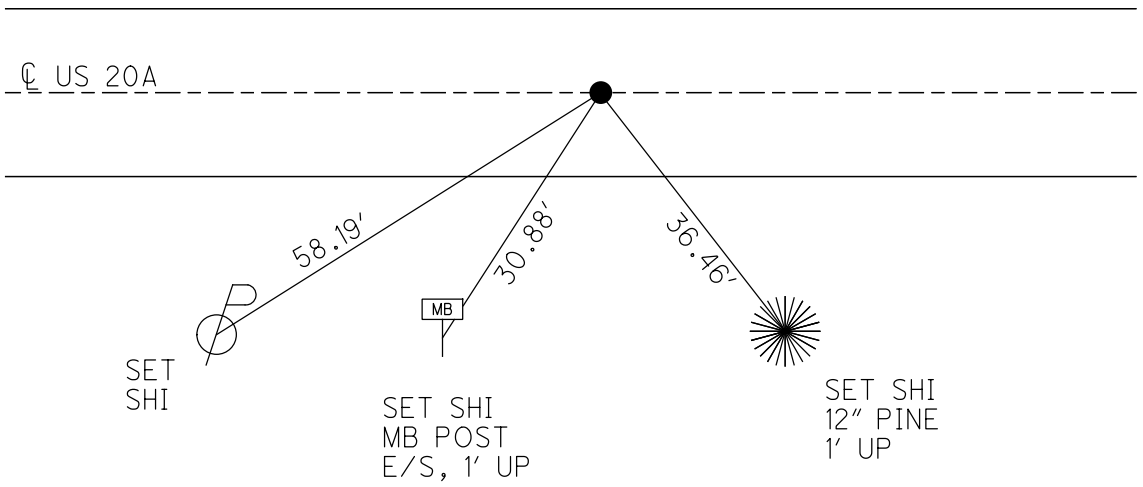
PERSONNEL _____ REFERENCE NO. 30 SHEET 34 OF 49
 NOTES WESTFALL DATE 8-5-13 ROUTE US 20A
 H.C. ROUSOS WEATHER SUNNY COUNTY LUCAS
 R.C. WESTFALL TEMP. 67° TOWNSHIP MONCLOVA
 KEFFER SECTION 32
 DWG BY JAMES PID NO PID T 2 N

TYPE MONUMENT P.K. NAIL
 ON SURFACE - ~~BELOW~~ ON
 OFFSET 0 PAVEMENT - _____ LT : RT
 - _____ TO - _____ EDGE PAVEMENT
 STATION: 440+56.27



HORZ.DATUM: NAD83 2011 GEOID: NAVD88 2012A
 GRID: NORTHING: 697148.688 EASTING: 1631250.338

- RECORD:
 FD 1 1/2" IRON BOLT
 2" DEEP. 4/30/85
 FD 1 1/2" IRON BOLT
 4" DEEP.
 7/1/85, IS
 FD P.K.NAIL
 REF30
 8/5/13, DCH
 SET MAG/WASHER
 NEWREF30
 4/16/14, DCH
 FD MAG/WASHER
 REF30
 3-7-19, JFO



O.D.O.T. DISTRICT 2 SURVEY OFFICE (USE ONLY)

PERSONNEL

REFERENCE NO. 30 A

SHEET 35 OF 49

NOTES WESTFALL

DATE 8-6-13

ROUTE US 20A

H.C. ROUSOS

WEATHER FAIR

COUNTY LUCAS

R.C. WESTFALL

TEMP. 71°

TOWNSHIP MONCLOVA

KEFFER

SECTION 32

DWG BY JAMES PID NO PID

T 2 N

TYPE MONUMENT R.R. SPIKE

ON SURFACE - BELOW ON

OFFSET \odot PAVEMENT - LT : RT

- TO - EDGE PAVEMENT

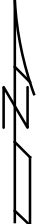
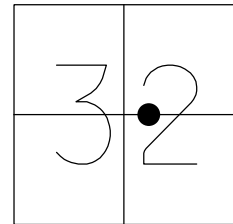
STATION: 449+28.89

HORZ. DATUM: NAD83 2011

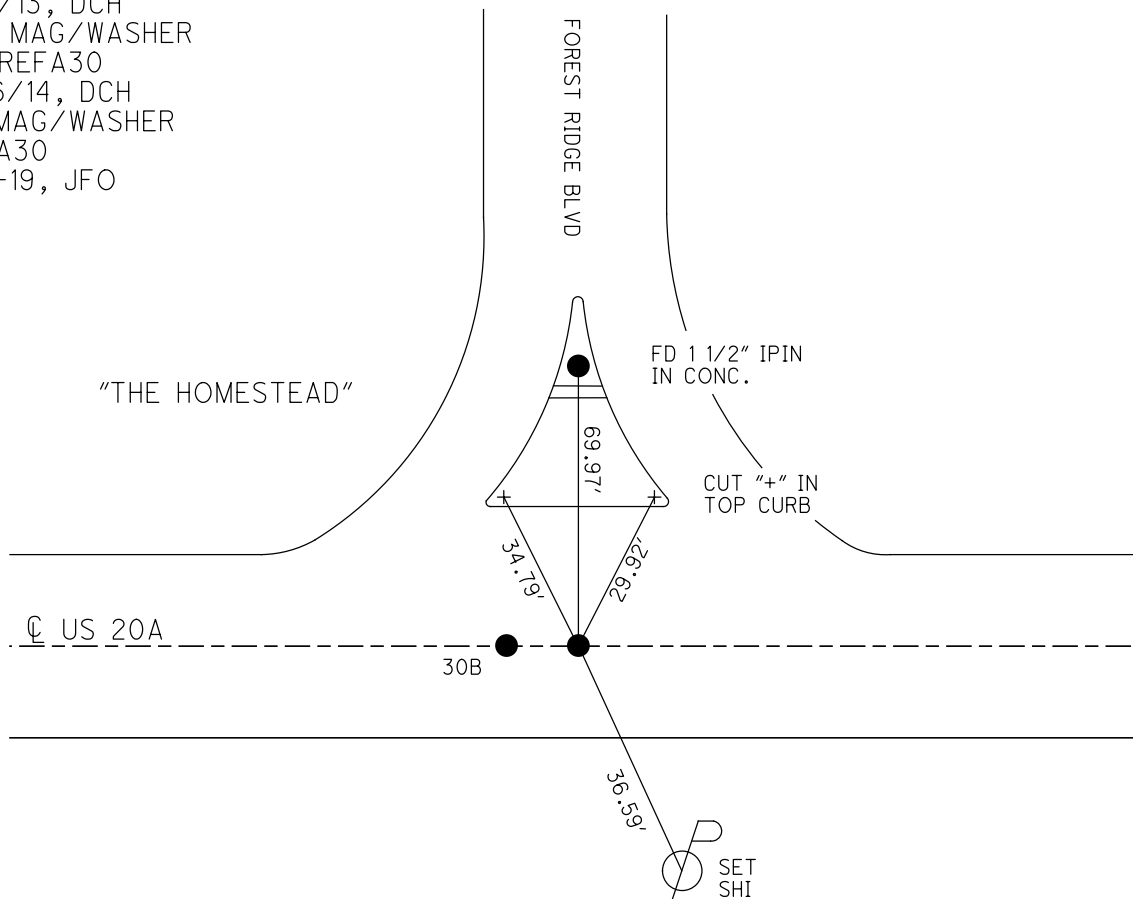
GEOID: NAVD88 2012A

GRID: NORTHING: 697136.829

EASTING: 1632122.972



RECORD:
 FD RR SPIKE
 REFA30
 FD MAG NAIL
 REFB30
 8/6/13, DCH
 SET MAG/WASHER
 NEWREFA30
 4/16/14, DCH
 FD MAG/WASHER
 REFA30
 3-7-19, JFO



O.D.O.T. DISTRICT 2 SURVEY OFFICE (USE ONLY)

PERSONNEL

REFERENCE NO. 30 B

SHEET 36 OF 49

NOTES RHOADES

DATE 3-7-19

ROUTE US 20A

H.C. O'DONNELL

WEATHER SUNNY

COUNTY LUCAS

R.C. LEU

TEMP. 24°

TOWNSHIP MONCLOVA

SECTION 32

DWG BY JAMES PID NO PID

T 2 N

TYPE MONUMENT 2" SQUARE BOLT

~~ON SURFACE~~ - BELOW 3"

OFFSET \varnothing PAVEMENT - LT : RT

- TO - EDGE PAVEMENT

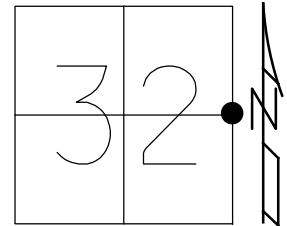
STATION: 467+29.56

HORZ.DATUM: NAD83 2011

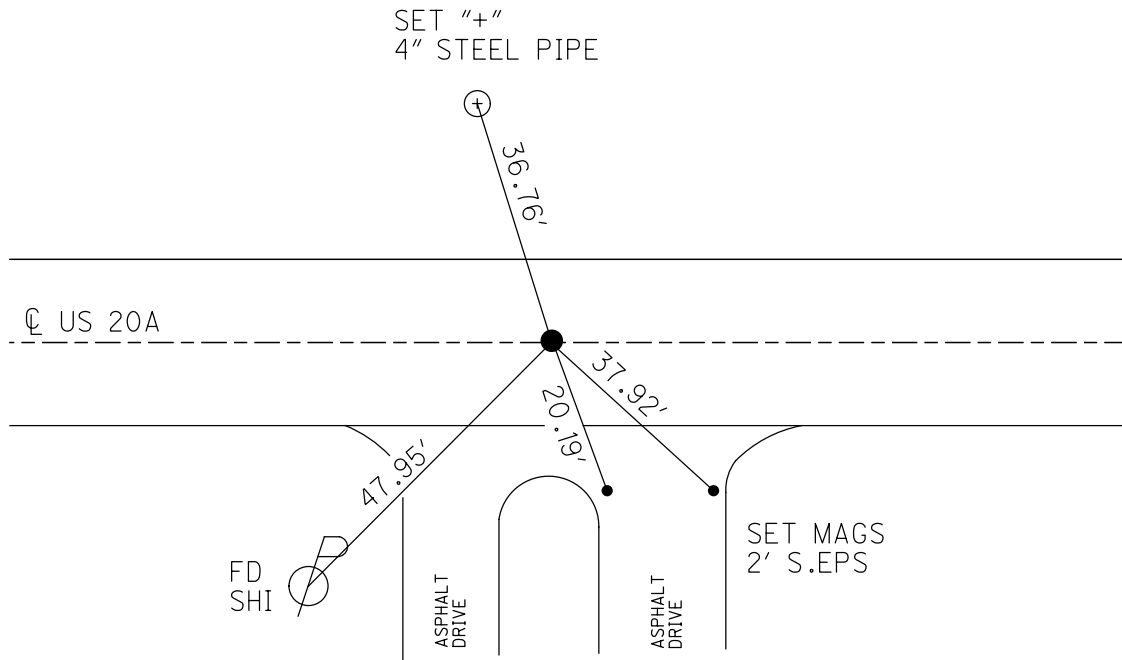
GEOID: NAVD88 2012A

GRID: NORTHING: 697112.411

EASTING: 1633923.641



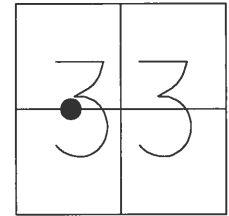
RECORD:
FD 2" SQ. BOLT
3" DOWN
REFB30
3-7-19, JFO



O.D.O.T. DISTRICT 2 SURVEY OFFICE (USE ONLY)

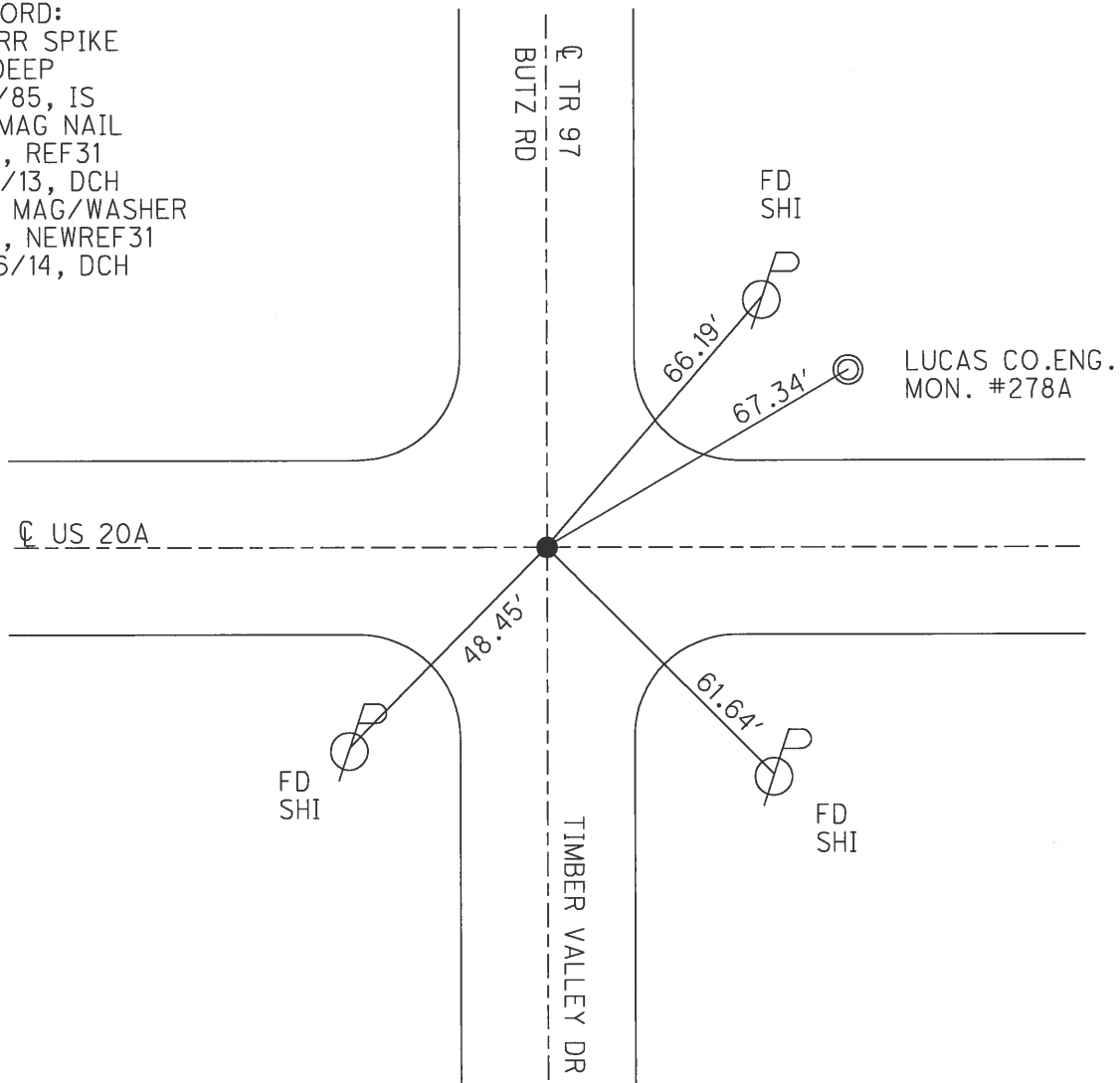
PERSONNEL _____ REFERENCE NO. 31 SHEET 36 OF 48
 NOTES WESTFALL DATE 8/6/13 ROUTE US 20A
 H.C. ROUSOS WEATHER FAIR COUNTY LUCAS
 R.C. WESTFALL TEMP. 71° TOWNSHIP MONCLOVA
 _____ KEFFER _____ SECTION 33
 _____ T 2

TYPE MONUMENT MAG NAIL
 ON SURFACE - ~~BELOW~~ ON
 LEFT - ☉ PAV'T - RIGHT - _____
 _____ TO _____ EDGE PAVEMENT
 S.L.M. 480+54.77



GRID: NORTHING: 697083.102 EASTING: 1635248.207

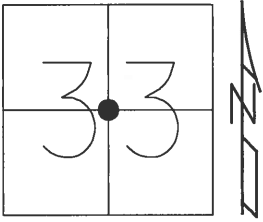
RECORD:
 FD RR SPIKE
 3" DEEP
 7/1/85, IS
 FD MAG NAIL
 GPS, REF31
 8/5/13, DCH
 SET MAG/WASHER
 GPS, NEWREF31
 4/16/14, DCH



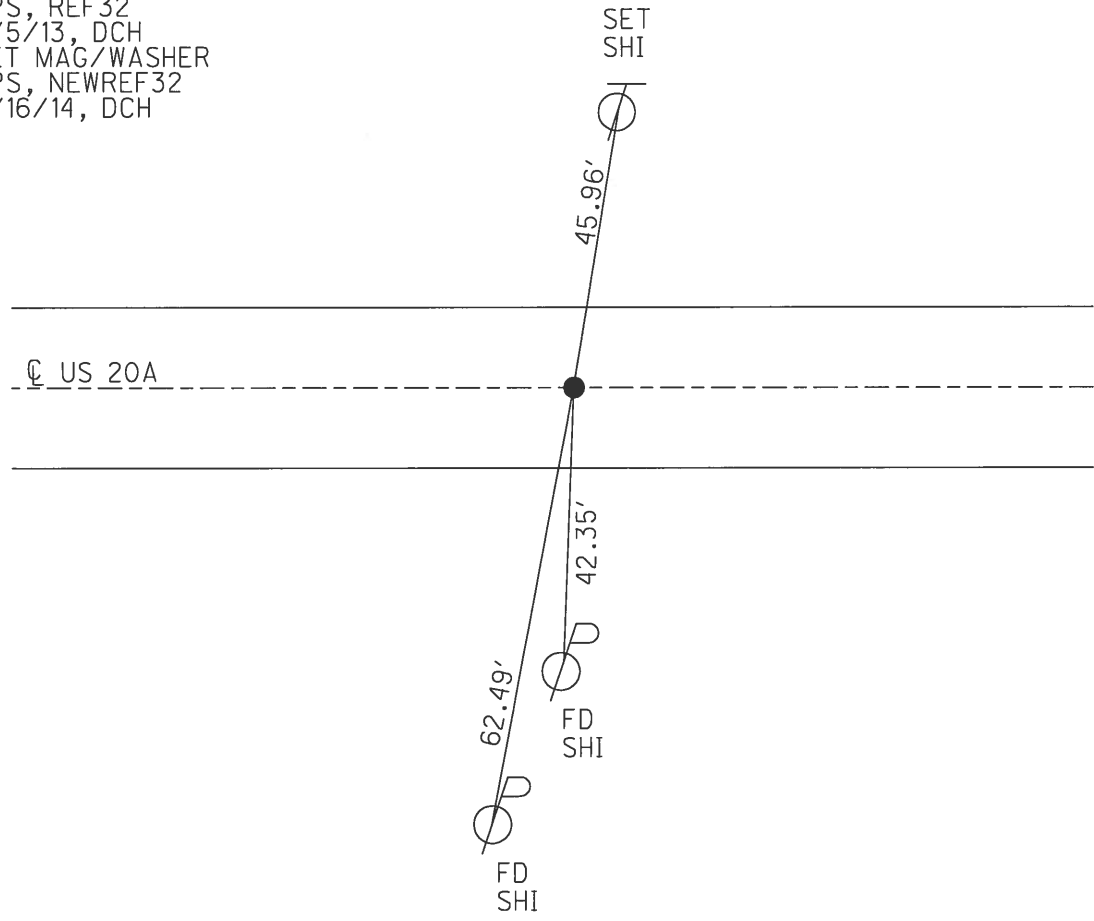
O.D.O.T. DISTRICT 2 SURVEY OFFICE (USE ONLY)

PERSONNEL _____ REFERENCE NO. 32 SHEET 37 OF 48
NOTES WESTFALL DATE 8/7/13 ROUTE US 20A
H.C. ROUSOS WEATHER FAIR COUNTY LUCAS
R.C. WESTFALL TEMP. 73° TOWNSHIP MONCLOVA
KEFFER SECTION 33
T 2

TYPE MONUMENT P.K.SHANK
ON SURFACE - ~~BELOW~~ ON _____
LEFT - ☉ PAV'T - RIGHT - _____
- TO - EDGE PAVEMENT
S.L.M. 493+60.03
GRID: NORTHING: 697066.543 EASTING: 1636553.473



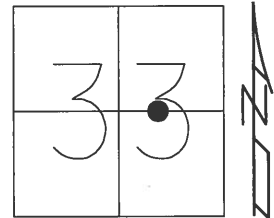
RECORD:
FD SM.RR SPIKE
3" DEEP
7/1/85, IS
FD P.K.SHANK
GPS, REF32
8/5/13, DCH
SET MAG/WASHER
GPS, NEWREF32
4/16/14, DCH



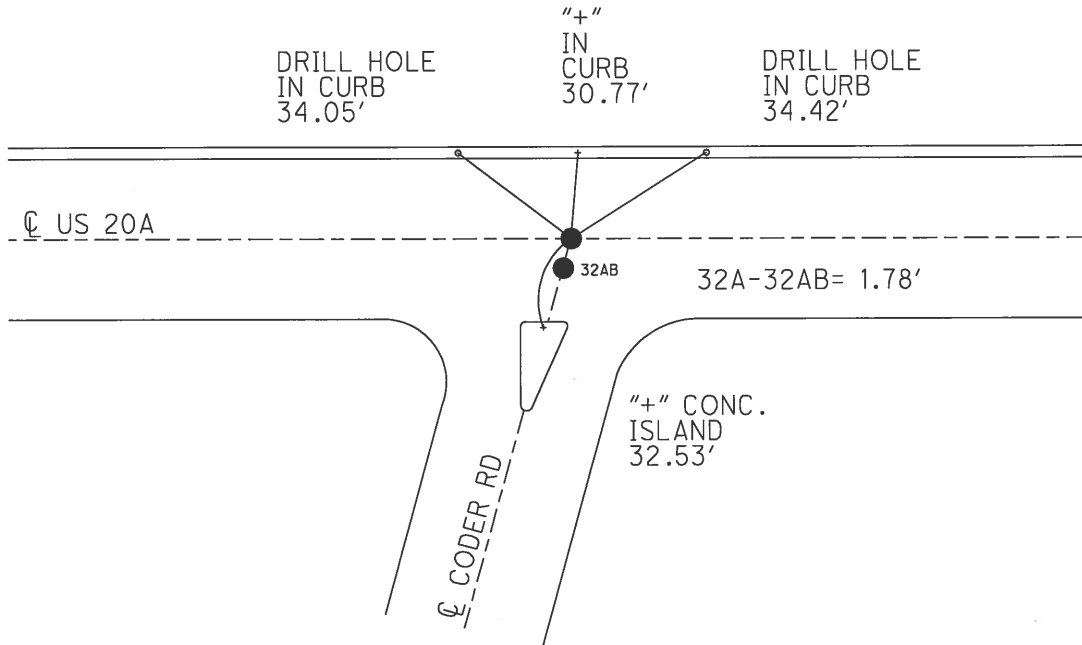
O.D.O.T. DISTRICT 2 SURVEY OFFICE (USE ONLY)

PERSONNEL _____ REFERENCE NO. 32 A SHEET 38 OF 48
 NOTES WESTFALL DATE 8/6/13 ROUTE US 20A
 H.C. ROUSOS WEATHER FAIR COUNTY LUCAS
 R.C. WESTFALL TEMP. 71° TOWNSHIP MONCLOVA
 _____ KEFFER _____ SECTION 33
 T 2

TYPE MONUMENT RR SPIKE
~~ON SURFACE~~ - BELOW 1 1/2"
 LEFT - ℄ PAV'T - RIGHT -
- TO - EDGE PAVEMENT
 S.L.M. 505+78.35
 GRID: NORTHING: 697049.227 EASTING: 1637771.935



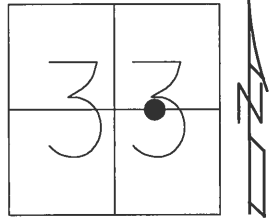
RECORD:
 FD SM.R.R.SPIKE
 3" DEEP
 7/1/85, IS
 FD RR SPIKE
 GPS, REF34
 8/5/13, DCH
 SET MAG/WASHER
 GPS, NEWREF33
 4/16/14, DCH



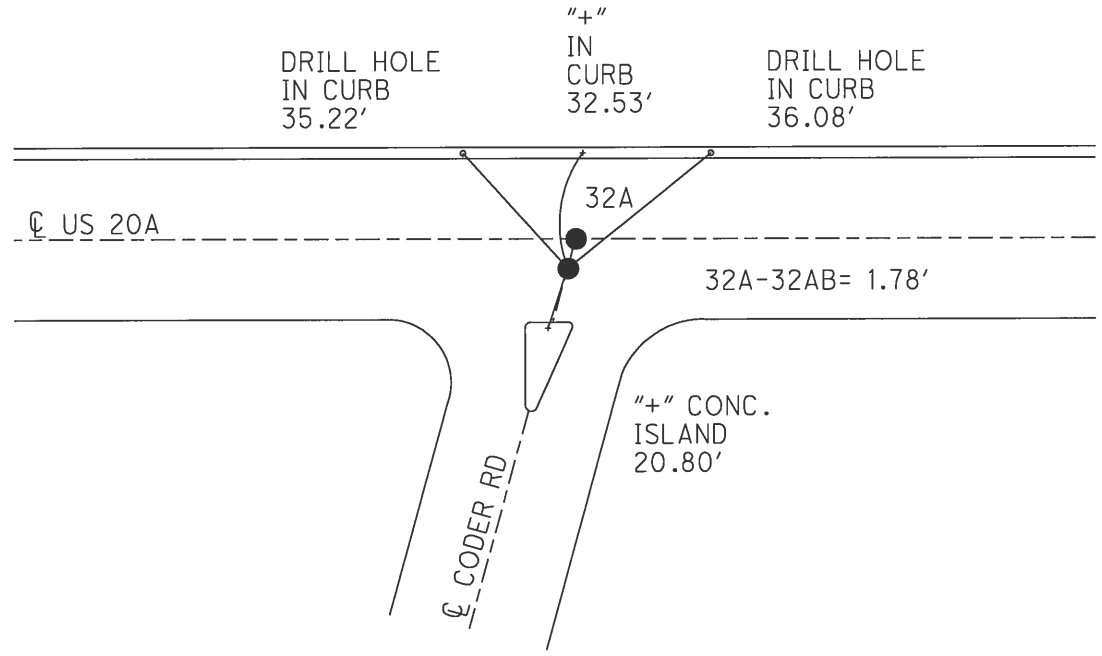
O.D.O.T. DISTRICT 2 SURVEY OFFICE (USE ONLY)

PERSONNEL _____ REFERENCE NO. 32 AB SHEET 39 OF 48
 NOTES WESTFALL DATE 8/6/13 ROUTE US 20A
 H.C. ROUSOS WEATHER FAIR COUNTY LUCAS
 R.C. WESTFALL TEMP. 71° TOWNSHIP MONCLOVA
 _____ KEFFER _____ SECTION 33
 _____ T 2

TYPE MONUMENT 5/8" IPIN
~~ON SURFACE~~ - BELOW 1 1/2"
 LEFT - ☉ PAV'T - RIGHT -
- TO - EDGE PAVEMENT
 S.L.M. 505+78.69
 GRID: NORTHING: 697047.425 EASTING: 1637771.558



RECORD:
 FD 5/8" IPIN
 8/6/13
 SET MAG/WASHER
 GPS, NEWREF34
 4/16/14, DCH

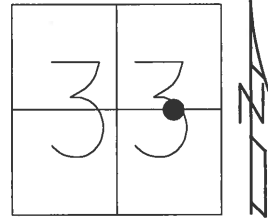


O.D.O.T. DISTRICT 2 SURVEY OFFICE (USE ONLY)

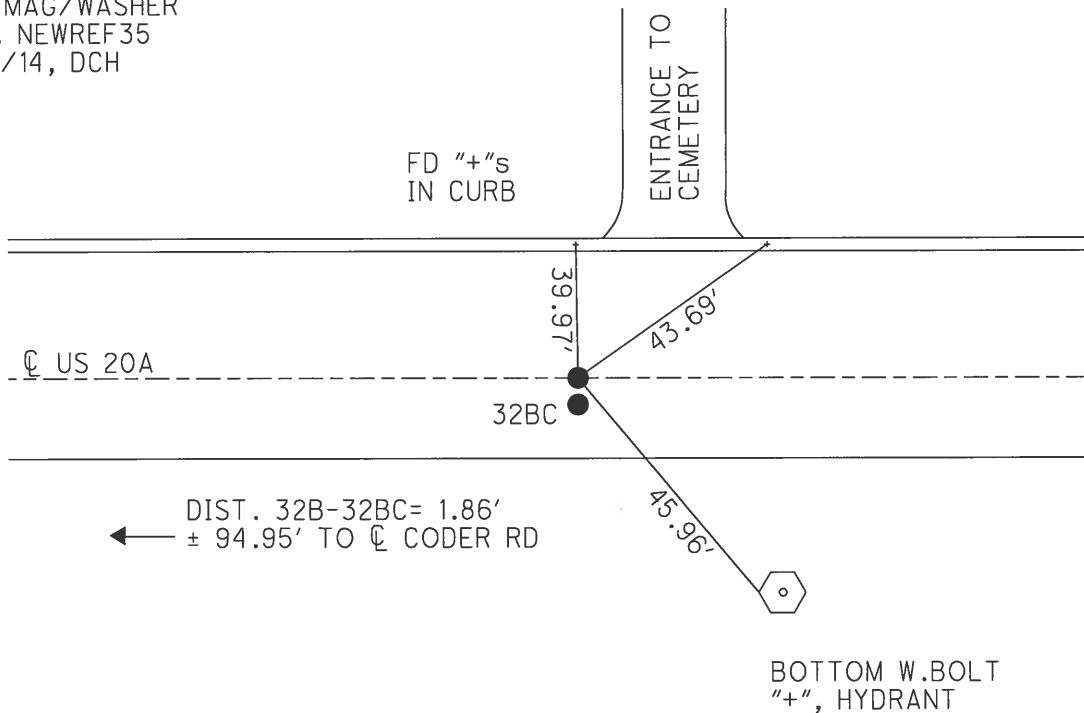
PERSONNEL _____ REFERENCE NO. 32 B SHEET 40 OF 48

NOTES	<u>WESTFALL</u>	DATE	<u>8/6/13</u>	ROUTE	<u>US 20A</u>
H.C.	<u>ROUSOS</u>	WEATHER	<u>FAIR</u>	COUNTY	<u>LUCAS</u>
R.C.	<u>WESTFALL</u>	TEMP.	<u>71°</u>	TOWNSHIP	<u>MONCLOVA</u>
	<u>KEFFER</u>			SECTION	<u>33</u>
				T	<u>2</u>

TYPE MONUMENT P.K.NAIL
 ON SURFACE - ~~BELOW~~ ON
 LEFT - ☉ PAV'T - RIGHT -
- TO - EDGE PAVEMENT
 S.L.M. 506+73.53
 GRID: NORTHING: 697048.800 EASTING: 1637866.916



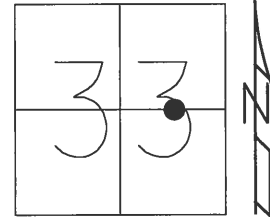
RECORD:
 SET P.K.NAIL
 5/1/85, IS
 FD P.K.NAIL
 GPS, REF35
 8/6/13, DCH
 SET MAG/WASHER
 GPS, NEWREF35
 4/16/14, DCH



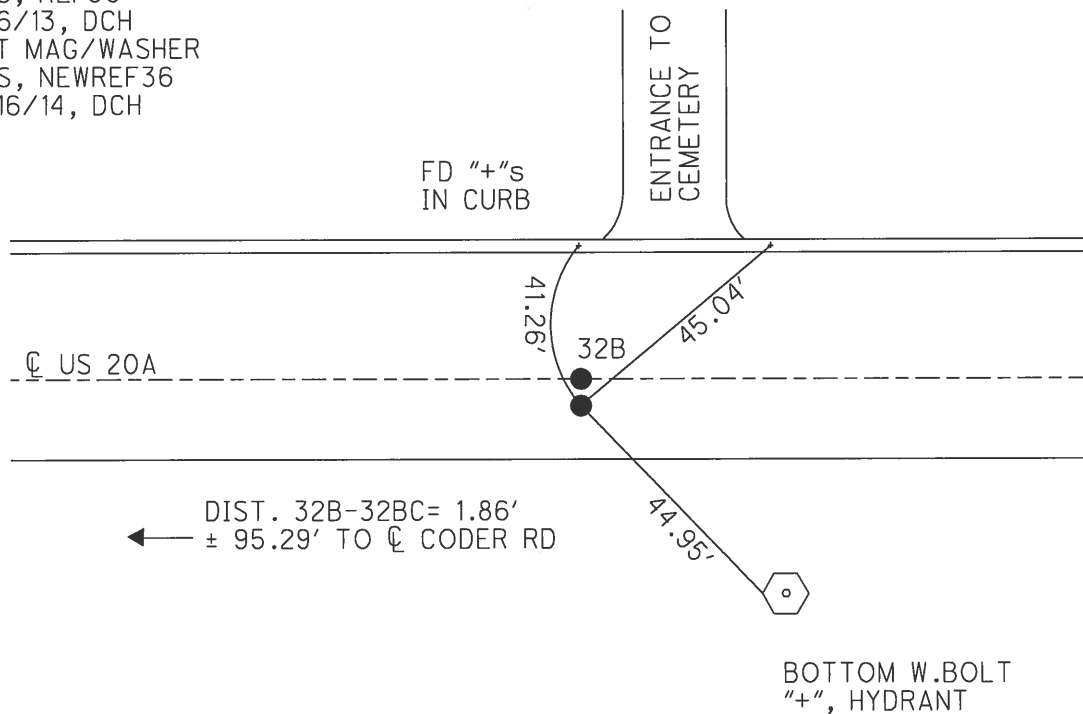
O.D.O.T. DISTRICT 2 SURVEY OFFICE (USE ONLY)

PERSONNEL _____ REFERENCE NO. 32 BC SHEET 41 OF 48
 NOTES WESTFALL DATE 8/6/13 ROUTE US 20A
 H.C. ROUSOS WEATHER FAIR COUNTY LUCAS
 R.C. WESTFALL TEMP. 71° TOWNSHIP MONCLOVA
 _____ KEFFER _____ SECTION 33
 _____ T 2

TYPE MONUMENT P.K.SHANK
~~ON SURFACE~~ - BELOW 1"
 LEFT - ☉ PAV'T - RIGHT - _____
 _____ TO _____ EDGE PAVEMENT
 S.L.M. 506+73.53
 GRID: NORTHING: 697046.934 EASTING: 1637866.763



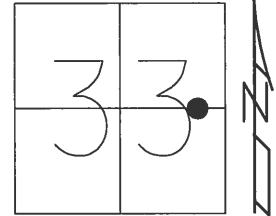
RECORD:
 SET P.K.NAIL
 7/1/85, IS
 FD P.K.SHANK
 1" BELOW
 GPS, REF36
 8/6/13, DCH
 SET MAG/WASHER
 GPS, NEWREF36
 4/16/14, DCH



O.D.O.T. DISTRICT 2 SURVEY OFFICE (USE ONLY)

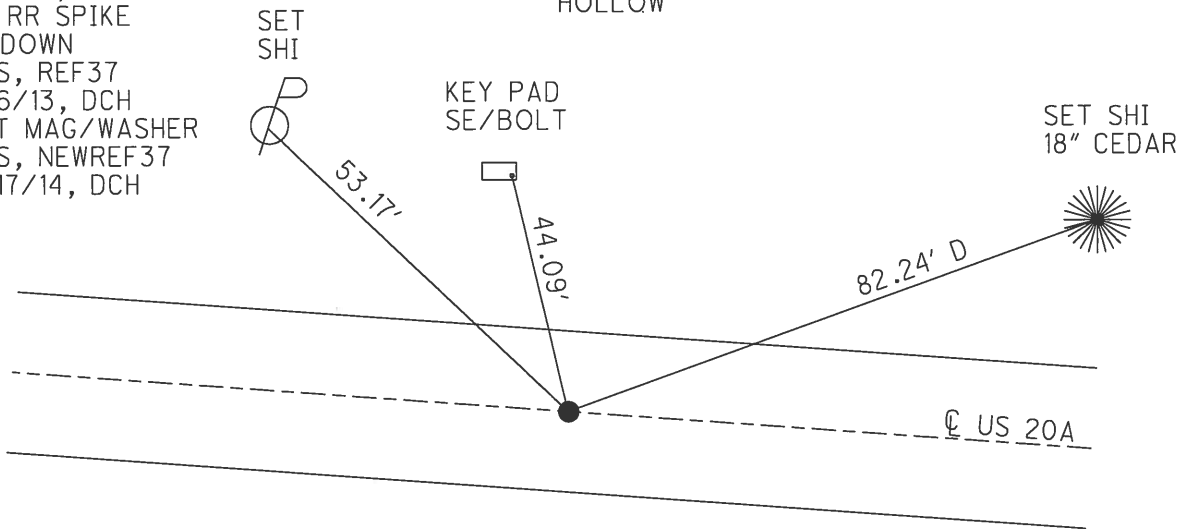
PERSONNEL _____ REFERENCE NO. 32 C SHEET 42 OF 48
 NOTES WESTFALL DATE 8/6/13 ROUTE US 20A
 H.C. ROUSOS WEATHER FAIR COUNTY LUCAS
 R.C. WESTFALL TEMP. 71° TOWNSHIP MONCLOVA
 _____ KEFFER _____ SECTION 33
 _____ T 2

TYPE MONUMENT RR SPIKE
~~ON SURFACE~~ - BELOW 2"
 LEFT - ☉ PAV'T - RIGHT - _____
 - TO - EDGE PAVEMENT
 S.L.M. 513+66.62
 GRID: NORTHING: 697043.424 EASTING: 1638559.895



RECORD:
 FD SM.RR SPIKE
 3" DEEP
 7/1/85, IS
 FD RR SPIKE
 2" DOWN
 GPS, REF37
 8/6/13, DCH
 SET MAG/WASHER
 GPS, NEWREF37
 4/17/14, DCH

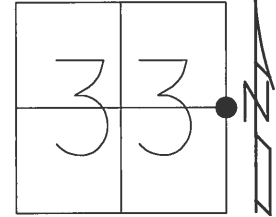
#6846
 HICKORY
 HOLLOW



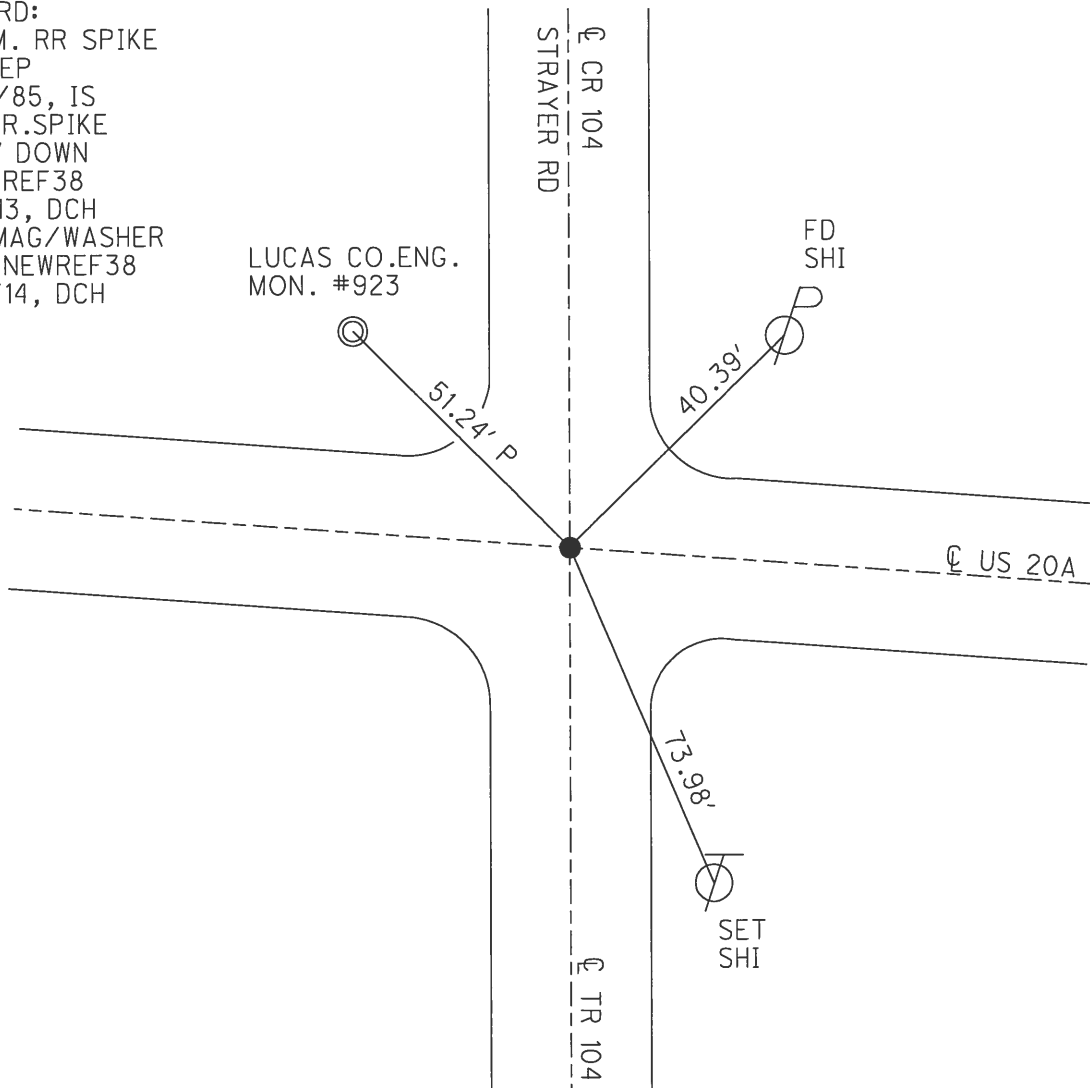
O.D.O.T. DISTRICT 2 SURVEY OFFICE (USE ONLY)

PERSONNEL _____ REFERENCE NO. 33 SHEET 43 OF 48
 NOTES WESTFALL DATE 8/6/13 ROUTE US 20A
 H.C. ROUSOS WEATHER FAIR COUNTY LUCAS
 R.C. WESTFALL TEMP. 71° TOWNSHIP MONCLOVA
 _____ KEFFER _____ SECTION 33
 T 2

TYPE MONUMENT R.R.SPIKE
~~ON SURFACE~~ - BELOW 1 1/2"
 LEFT - ☉ PAV'T - RIGHT -
- TO - EDGE PAVEMENT
 S.L.M. 519+76.72
 GRID: NORTHING: 696926.462 EASTING: 1639159.64



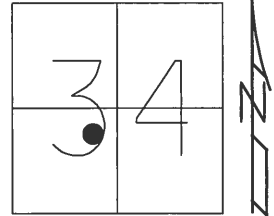
RECORD:
 FD SM. RR SPIKE
 3" DEEP
 6/28/85, IS
 FD R.R.SPIKE
 1 1/2" DOWN
 GPS, REF38
 8/6/13, DCH
 SET MAG/WASHER
 GPS, NEWREF38
 4/17/14, DCH



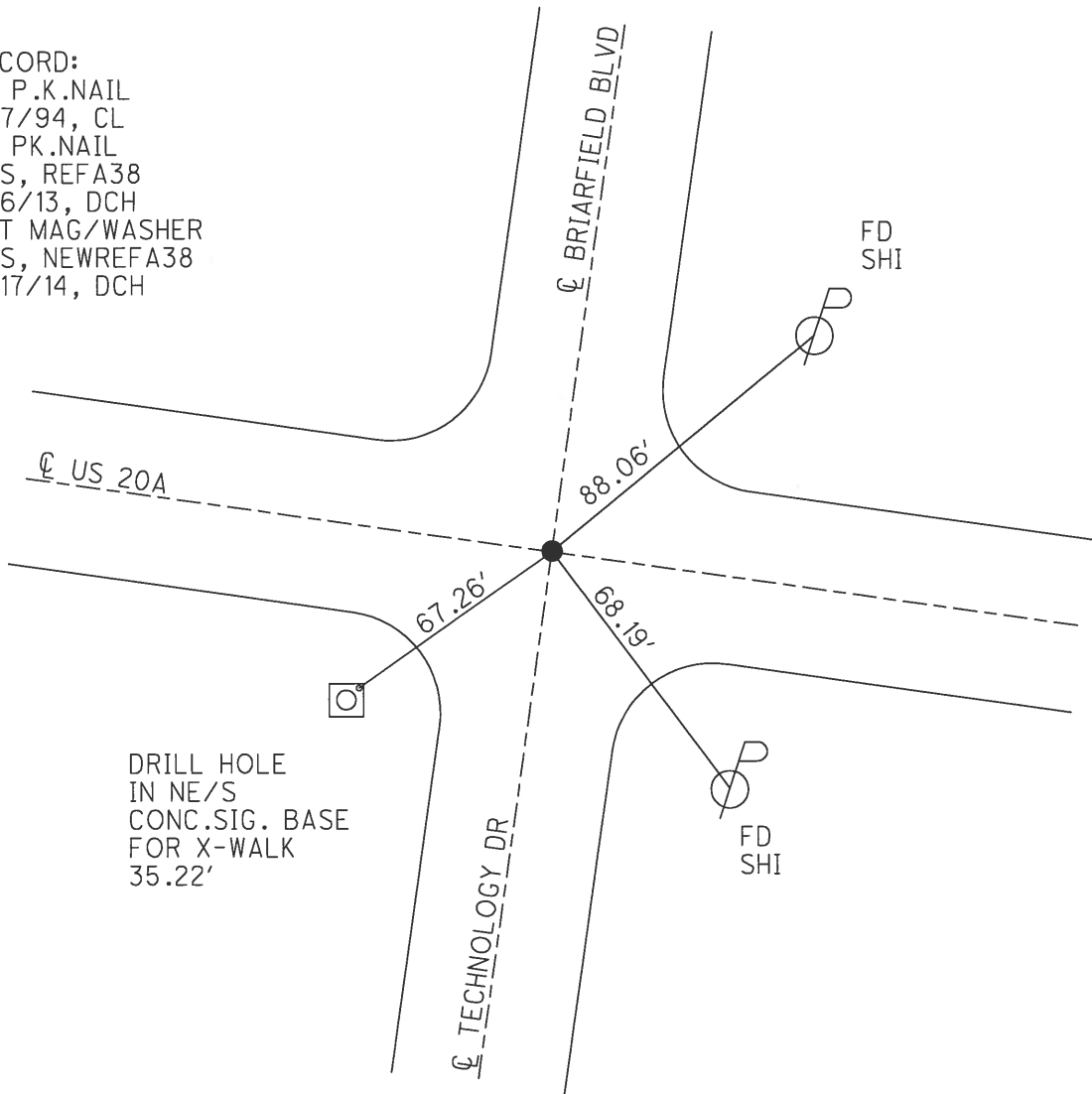
O.D.O.T. DISTRICT 2 SURVEY OFFICE (USE ONLY)

PERSONNEL _____ REFERENCE NO. 33 A SHEET 44 OF 48
 NOTES WESTFALL DATE 8/6/13 ROUTE US 20A
 H.C. ROUSOS WEATHER FAIR COUNTY LUCAS
 R.C. WESTFALL TEMP. 71° TOWNSHIP MONCLOVA
 _____ KEFFER _____ SECTION 34
 T 2

TYPE MONUMENT P.K.NAIL
 ON SURFACE - ~~BELOW~~ ON _____
 LEFT - ☉ PAV'T - RIGHT - _____
 - TO - EDGE PAVEMENT
 S.L.M. 542+06.94
 GRID: NORTHING: 696503.662 EASTING: 1641349.511



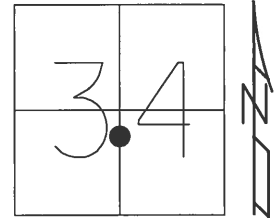
RECORD:
 FD P.K.NAIL
 9/7/94, CL
 FD PK.NAIL
 GPS, REFA38
 8/6/13, DCH
 SET MAG/WASHER
 GPS, NEWREFA38
 4/17/14, DCH



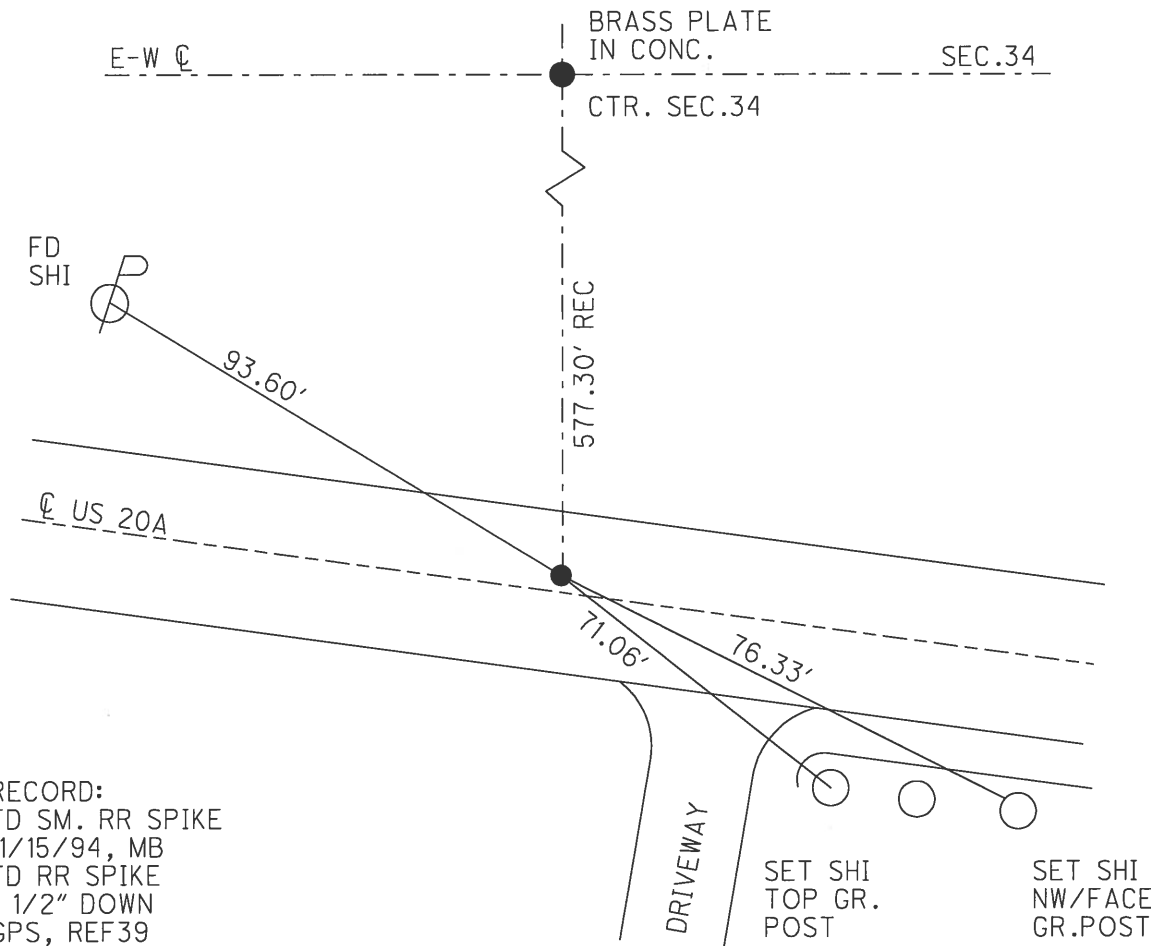
O.D.O.T. DISTRICT 2 SURVEY OFFICE (USE ONLY)

PERSONNEL _____ REFERENCE NO. 34 SHEET 45 OF 48
NOTES WESTFALL DATE 8/7/13 ROUTE US 20A
H.C. ROUSOS WEATHER FAIR COUNTY LUCAS
R.C. WESTFALL TEMP. 73° TOWNSHIP MONCLOVA
KEFFER SECTION 34
T 2

TYPE MONUMENT RR SPIKE
~~ON SURFACE~~ - BELOW 1 1/2"
LEFT - ☉ PAV'T - RIGHT - _____
- TO - EDGE PAVEMENT
S.L.M. 546+91.95



GRID: NORTHING: 696411.731 EASTING: 1641825.509

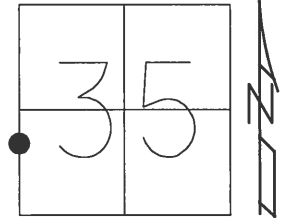


RECORD:
FD SM. RR SPIKE
11/15/94, MB
FD RR SPIKE
1 1/2" DOWN
GPS, REF39
8/7/13, DCH
SET MAG/WASHER
GPS, NEWREF39
4/17/14, DCH

O.D.O.T. DISTRICT 2 SURVEY OFFICE (USE ONLY)

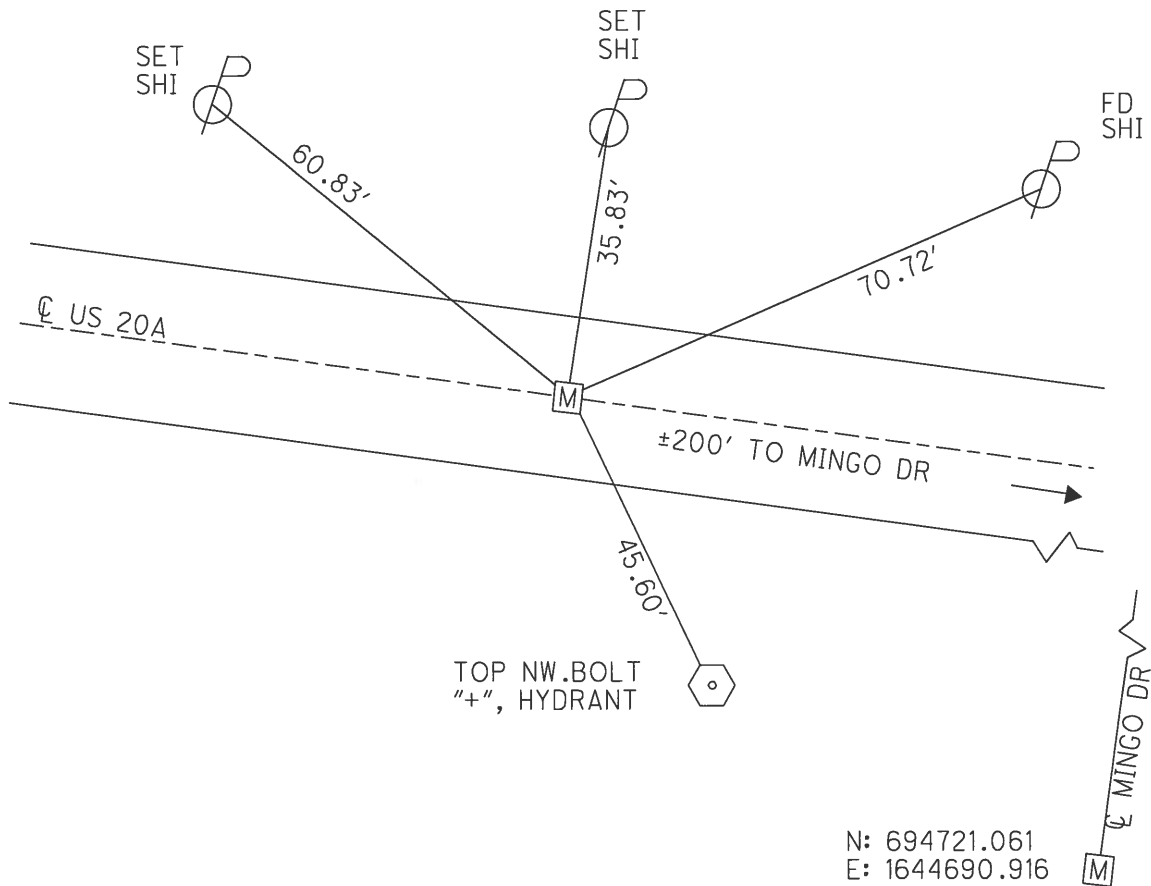
PERSONNEL _____ REFERENCE NO. 35 SHEET 46 OF 48
 NOTES WESTFALL DATE 8/7/13 ROUTE US 20A
 H.C. ROUSOS WEATHER FAIR COUNTY LUCAS
 R.C. WESTFALL TEMP. 73° TOWNSHIP MONCLOVA
 _____ KEFFER _____ SECTION 35
 _____ T 2

TYPE MONUMENT MON BOX
 ON SURFACE - ~~BELOW~~ ON
 LEFT - ☉ PAV'T - RIGHT ON
21.4' TO LT CURB EDGE
 S.L.M. 574+08.09



GRID: NORTHING: 695895.081 EASTING: 1644492.098

RECORD:
 FD MON BOX
 8/24/94, CL
 FD MON BOX
 GPS, REF40
 8/7/13, DCH

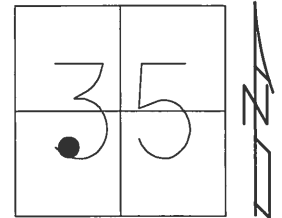


N: 694721.061
 E: 1644690.916

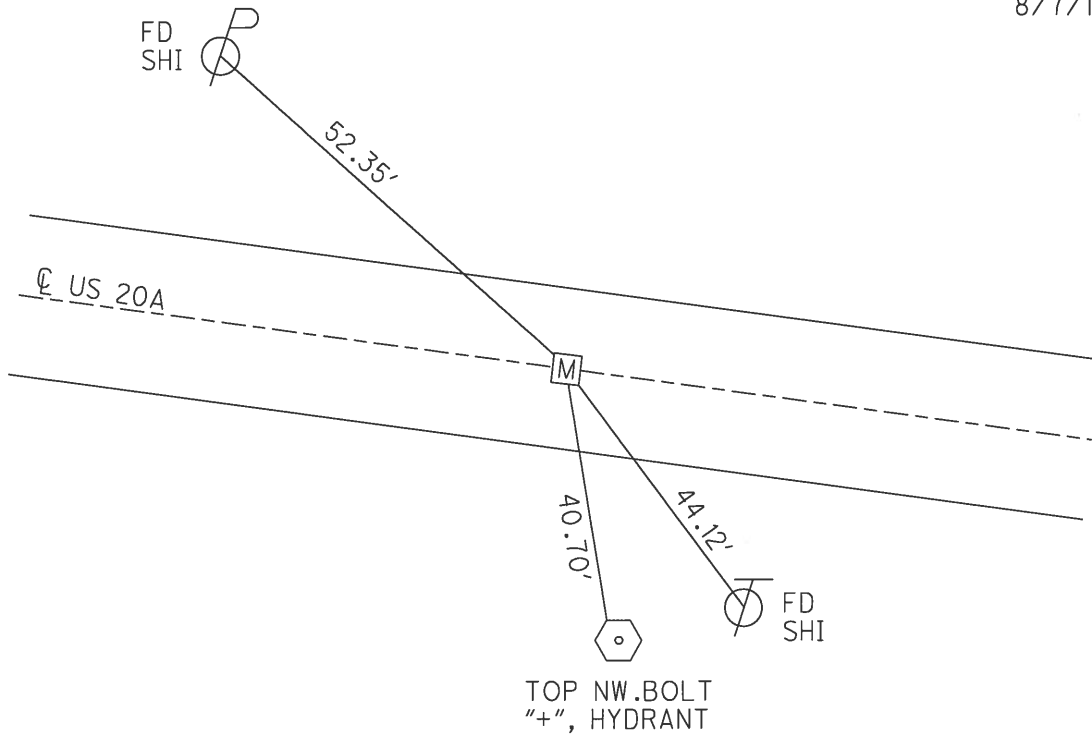
O.D.O.T. DISTRICT 2 SURVEY OFFICE (USE ONLY)

PERSONNEL _____ REFERENCE NO. 36 SHEET 47 OF 48
 NOTES WESTFALL DATE 8/7/13 ROUTE US 20A
 H.C. ROUSOS WEATHER FAIR COUNTY LUCAS
 R.C. WESTFALL TEMP. 73° TOWNSHIP MONCLOVA
 _____ KEFFER _____ SECTION 35
 _____ T 2

TYPE MONUMENT MON BOX
 ON SURFACE - ~~BELOW~~ ON
 LEFT - ☉ PAV'T - RIGHT ON
24.5' TO RT GUTTER
 S.L.M. 587+60.86
 GRID: NORTHING: 695637.862 EASTING: 1645820.192



RECORD:
 FD MON BOX
 8/24/94, CL
 FD MON BOX
 1" IPIN
 GPS, REF43
 8/7/13, DCH

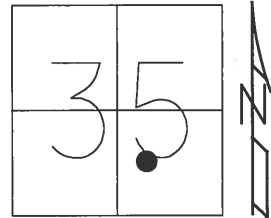


O.D.O.T. DISTRICT 2 SURVEY OFFICE (USE ONLY)

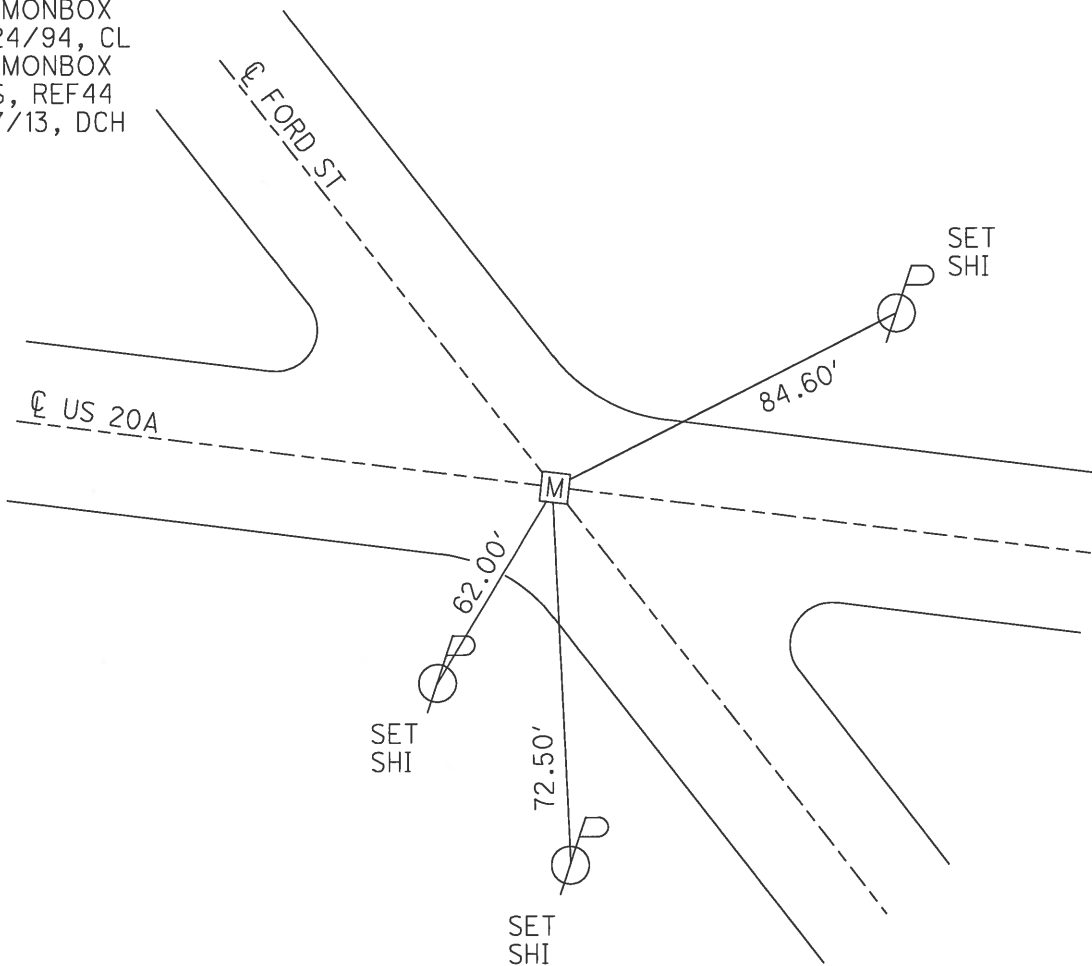
PERSONNEL _____ REFERENCE NO. 37 SHEET 48 OF 48

NOTES LOEHRKE DATE 8/24/94 ROUTE US 20A
 H.C. CANTERBURY WEATHER NICE :) COUNTY LUCAS
 R.C. HERMILLER TEMP. 70° TOWNSHIP MONCLOVA
KEFFER SECTION 35
 T 2

TYPE MONUMENT MON BOX
 ON SURFACE - ~~BELOW~~ ON
 LEFT - ☉ PAV'T - RIGHT ON
TO EDGE PAVEMENT
 S.L.M. 606+58.25
 GRID: NORTHING: 695285.651 EASTING: 1647684.604



RECORD:
 FD MONBOX
 8/24/94, CL
 FD MONBOX
 GPS, REF44
 8/7/13, DCH



O.D.O.T. DISTRICT 2 SURVEY OFFICE (USE ONLY)

PERSONNEL

REFERENCE NO. 38

SHEET 50 OF 51

NOTES LOEHRKE
 H.C. CANTERBURY
 R.C. HERMILLER

DATE 8/24/94
 WEATHER NICE
 TEMP. 70°

ROUTE US 20A
 COUNTY LUCAS
 TOWNSHIP 12 MILE RESERVE
 SECTION 35
 T 2

DWG BY NIESE PID _____

TYPE MONUMENT P.K. NAIL

ON SURFACE - ~~BELOW~~ ON _____

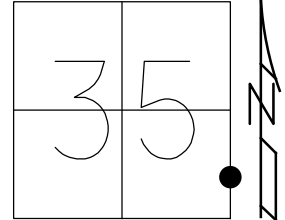
OFFSET \odot PAVEMENT 5.0' LT : ~~RT~~

- TO - EDGE PAVEMENT

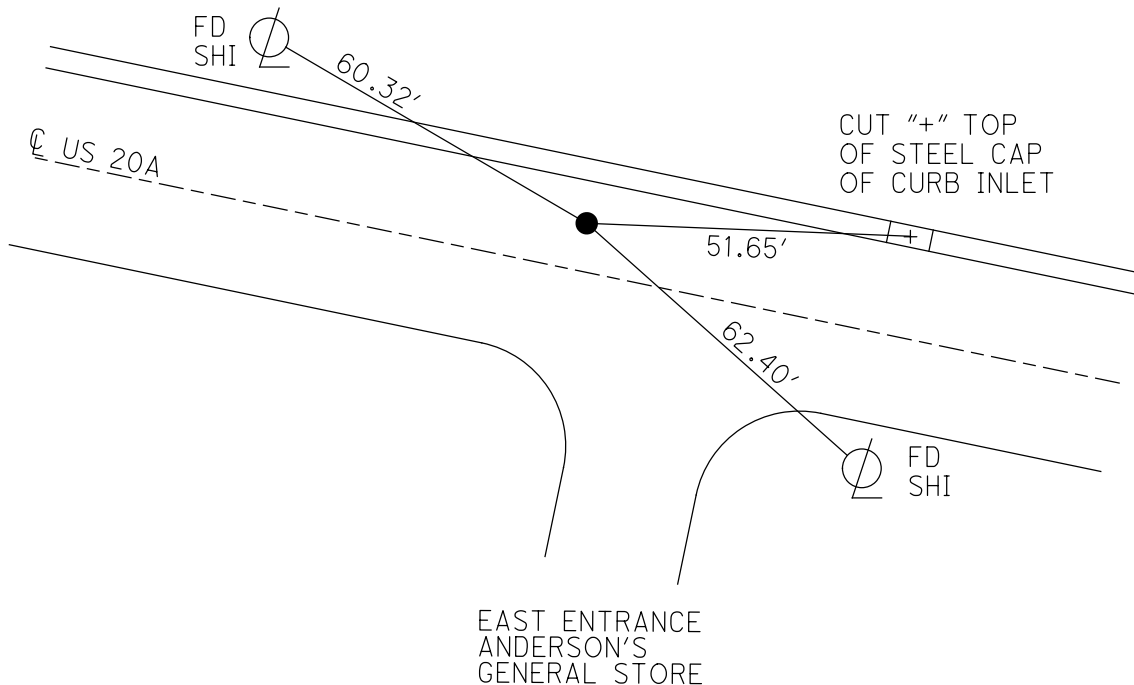
STATION: 621+79

HORZ. DATUM: _____ GEOID: _____

GRID: NORTHING: _____ EASTING: _____



RECORD: P.C.
 STA. 467+25.10
 FD P.K. NAIL
 8/24/94, CL
 SET P.K. NAIL
 10/28/94, CL



O.D.O.T. DISTRICT 2 SURVEY OFFICE (USE ONLY)

PERSONNEL

REFERENCE NO. 39

SHEET 51 OF 51

NOTES LOEHRKE

DATE 8/24/94

ROUTE US 20A

H.C. CANTERBURY

WEATHER NICE

COUNTY LUCAS

R.C. HERMILLER

TEMP. 70°

TOWNSHIP 12 MILE RESERVE

SECTION 36

DWG BY NIESE PID _____

T 2

TYPE MONUMENT MONBOX

ON SURFACE - ~~BELOW~~ ON

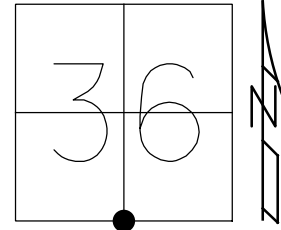
OFFSET Q PAVEMENT ON LT : RT

25.0' TO LT ~~EDGE PAVEMENT~~ GUTTER

STATION: 635+76

HORIZ.DATUM: _____ GEOID: _____

GRID: NORTHING: _____ EASTING: _____



RECORD:
 STA. 481+01.12
 FD MONBOX
 8/24/94, CL

