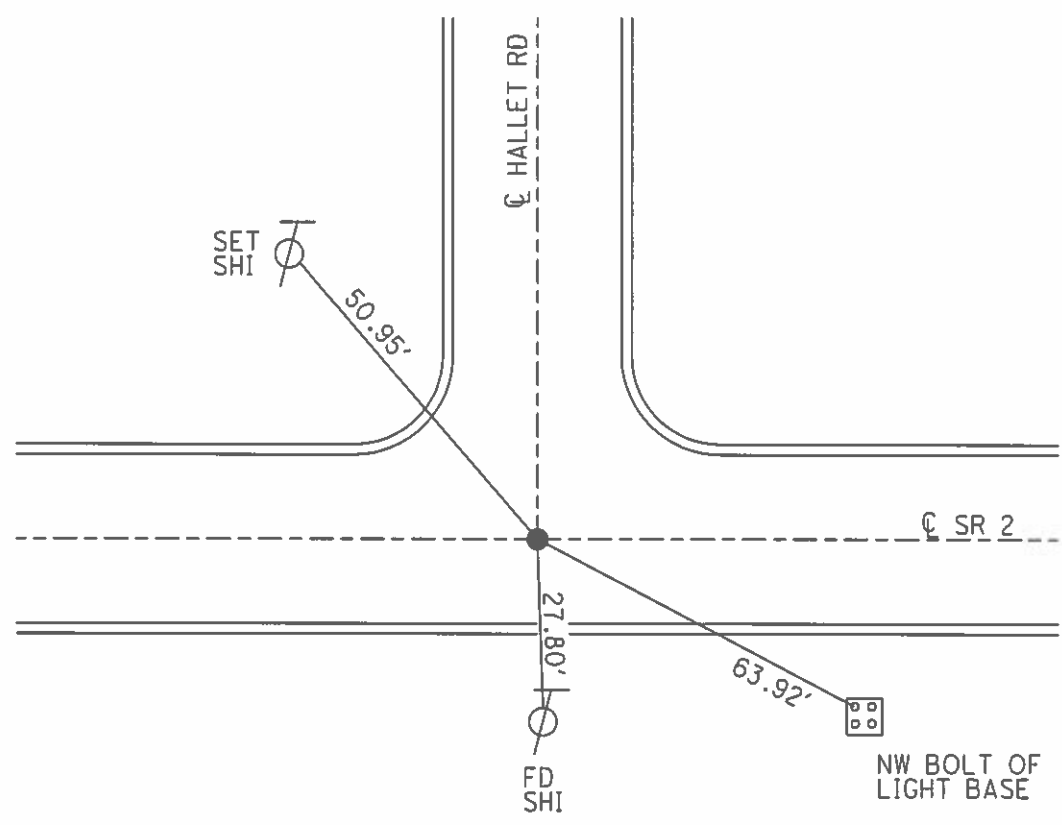
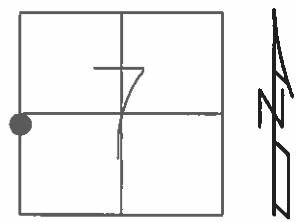


O.D.O.T. DISTRICT 2 SURVEY OFFICE (USE ONLY)

PERSONNEL \_\_\_\_\_ REFERENCE NO. 1 SHEET 1 OF 11  
 NOTES HOMAN \_\_\_\_\_ DATE 6/15/03 \_\_\_\_\_ ROUTE SR 2  
 H.C. HOMAN \_\_\_\_\_ WEATHER FAIR \_\_\_\_\_ COUNTY LUCAS  
 R.C. RYALL \_\_\_\_\_ TEMP. 75° \_\_\_\_\_ TOWNSHIP SWANTON  
 \_\_\_\_\_ SECTION 7  
 \_\_\_\_\_ T 7 N R 5 E

TYPE MONUMENT BRASS CAP MON.  
~~ON SURFACE~~ - BELOW 2"  
 LEFT - ☉ PAV'T - RIGHT ON  
22.1' TO S EDGE PAVEMENT  
 S.L.M. 0+00  
 GRID: NORTHING: \_\_\_\_\_ EASTING: \_\_\_\_\_



# O.D.O.T. DISTRICT 2 SURVEY OFFICE

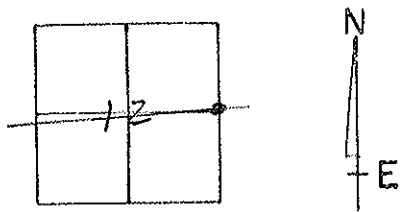
PERSONNEL \_\_\_\_\_ REFERENCE NO. 49 SHEET 17 OF \_\_\_\_\_

NOTES 1. Stone  
 H.C. D. Condis  
 R.C. J. Houscholder  
R. Michalak

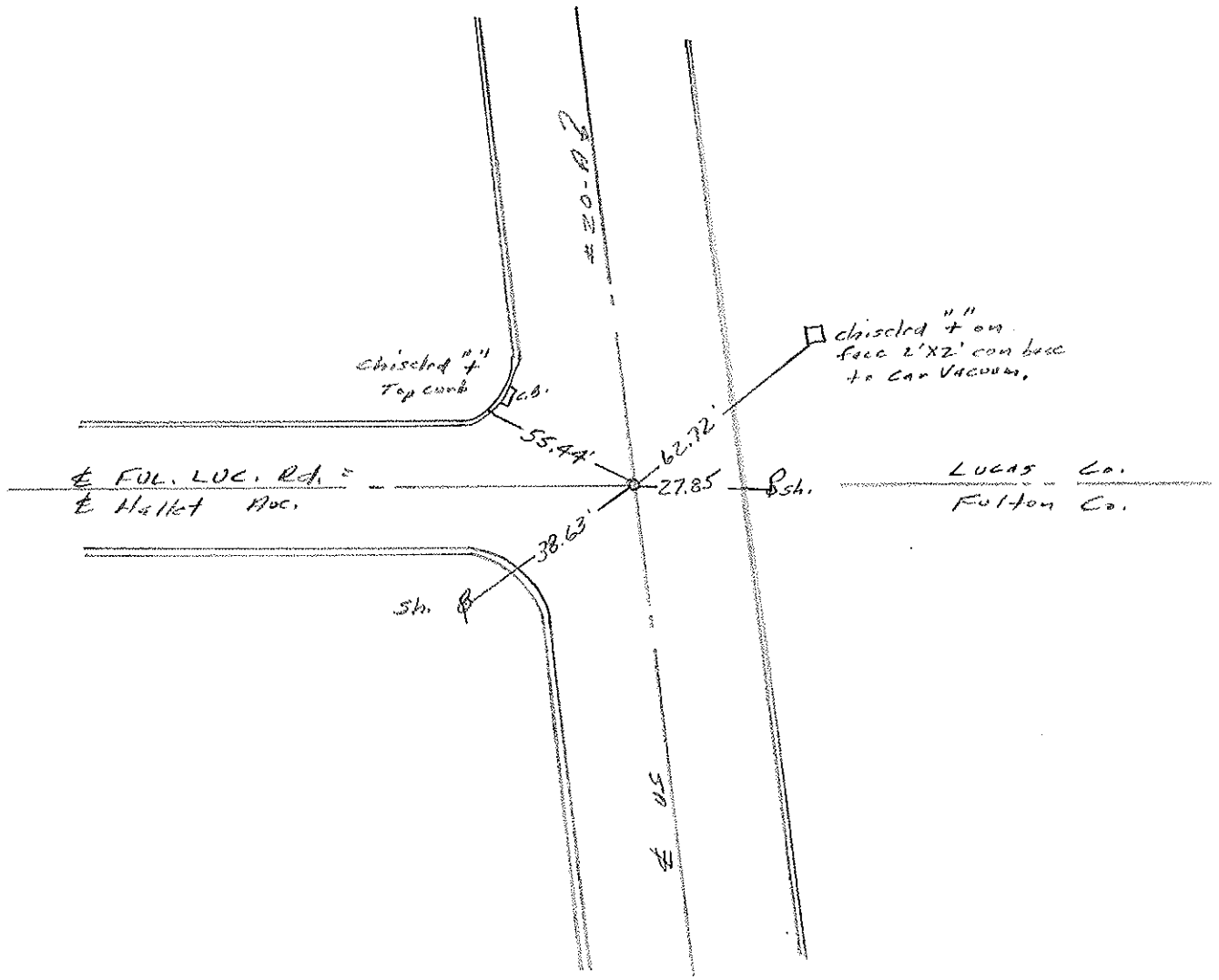
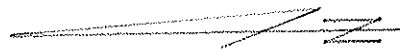
DATE 5 March 86  
 WEATHER Cloudy  
 TEMP. 35°

ROUTE US 20-A  
 COUNTY Fulton  
 TOWNSHIP Swain Creek  
 SECTION 12  
 T \_\_\_\_\_ R \_\_\_\_\_

TYPE MONUMENT Mobara  
 ON SURFACE - BELOW 2" deep  
 LEFT- & PAV'T. - RIGHT \_\_\_\_\_  
 TO \_\_\_\_\_ EDGE PAVEMENT  
 S.L.M. 1388+40



04 9/15/86 125



O.D.O.T. DISTRICT 2 SURVEY OFFICE (USE ONLY)

PERSONNEL \_\_\_\_\_ REFERENCE NO. 1 SHEET 1 OF 48

NOTES	<u>STONE</u>	DATE	<u>7/14/71</u>	ROUTE	<u>US 20A</u>
H.C.	<u>MICHALAK</u>	WEATHER	<u>COOL</u>	COUNTY	<u>LUCAS</u>
R.C.	<u>SCHRODER</u>	TEMP.	<u>70°</u>	TOWNSHIP	<u>SWANTON</u>
				SECTION	<u>7</u>
					<u>T 7 N R 4 E</u>

TYPE MONUMENT BRASS CAP MON.

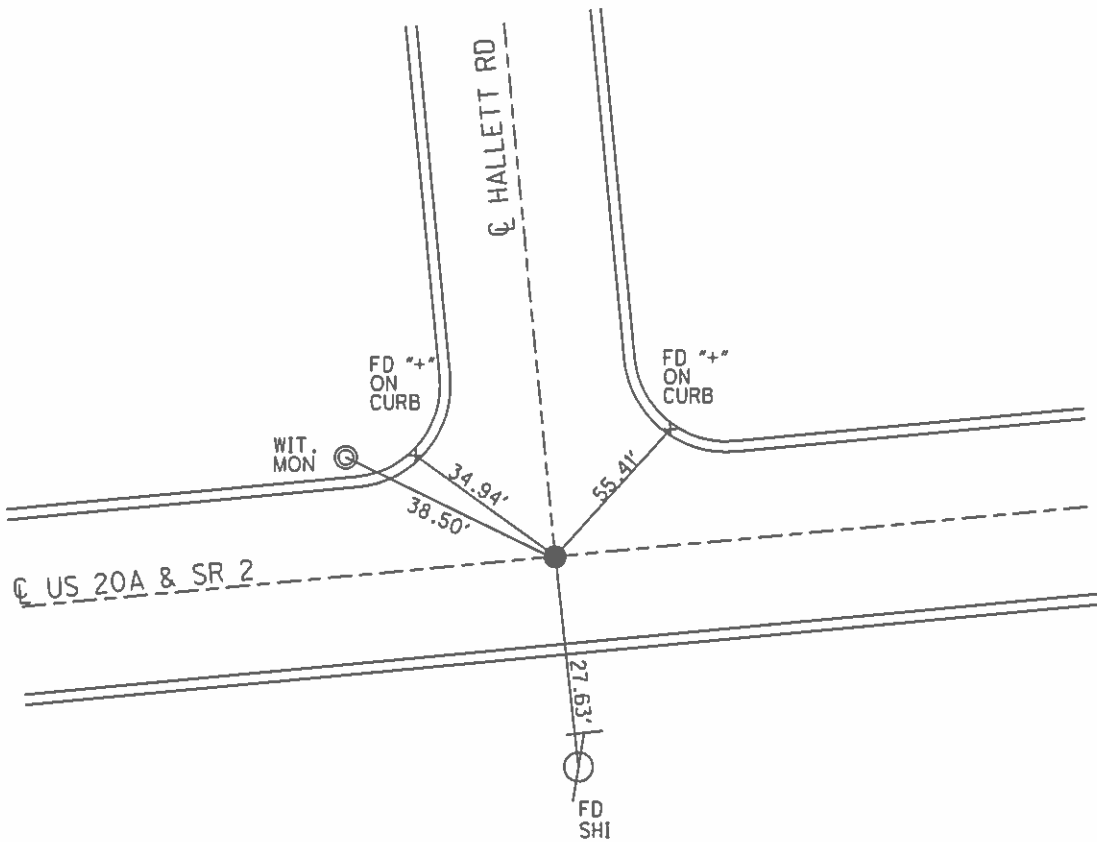
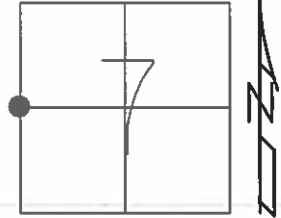
~~ON SURFACE~~ - BELOW 1"

LEFT - ☉ PAV'T - RIGHT ON

22.1' TO S EDGE PAVEMENT

S.L.M. 0+00

Grid: Northing: \_\_\_\_\_ Easting: \_\_\_\_\_



County LUCAS S.R. U.S. 20-A

Date 7-14-71

Township SWANTON

Weather COOL

Section 7

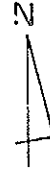
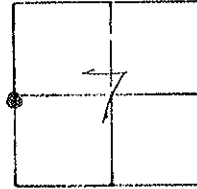
Temp. 70°

T7N, R4E

Personnel STONE

MICHALAK

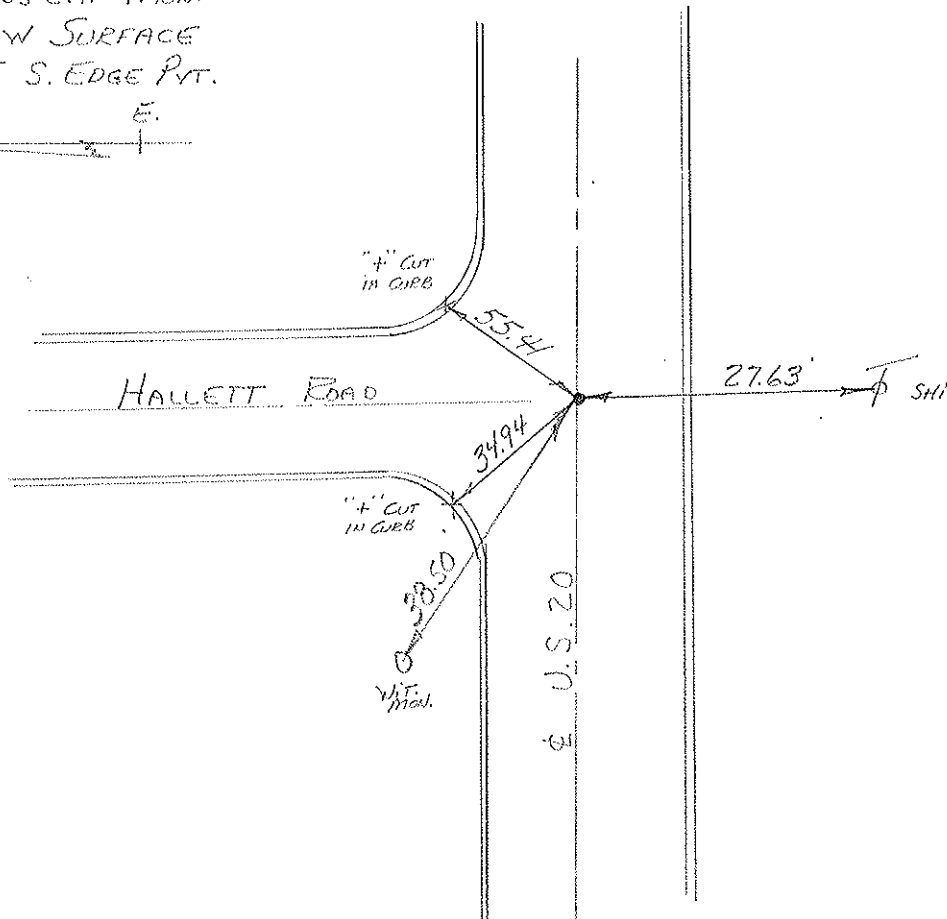
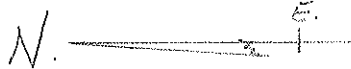
SCHRODER



0.00

#1

FD. BRASS CAP MON.  
1" BELOW SURFACE  
22.1' TO S. EDGE PVT.



PERSONNEL	TITLE	PERSONNEL	TITLE
Stone			
Crew			

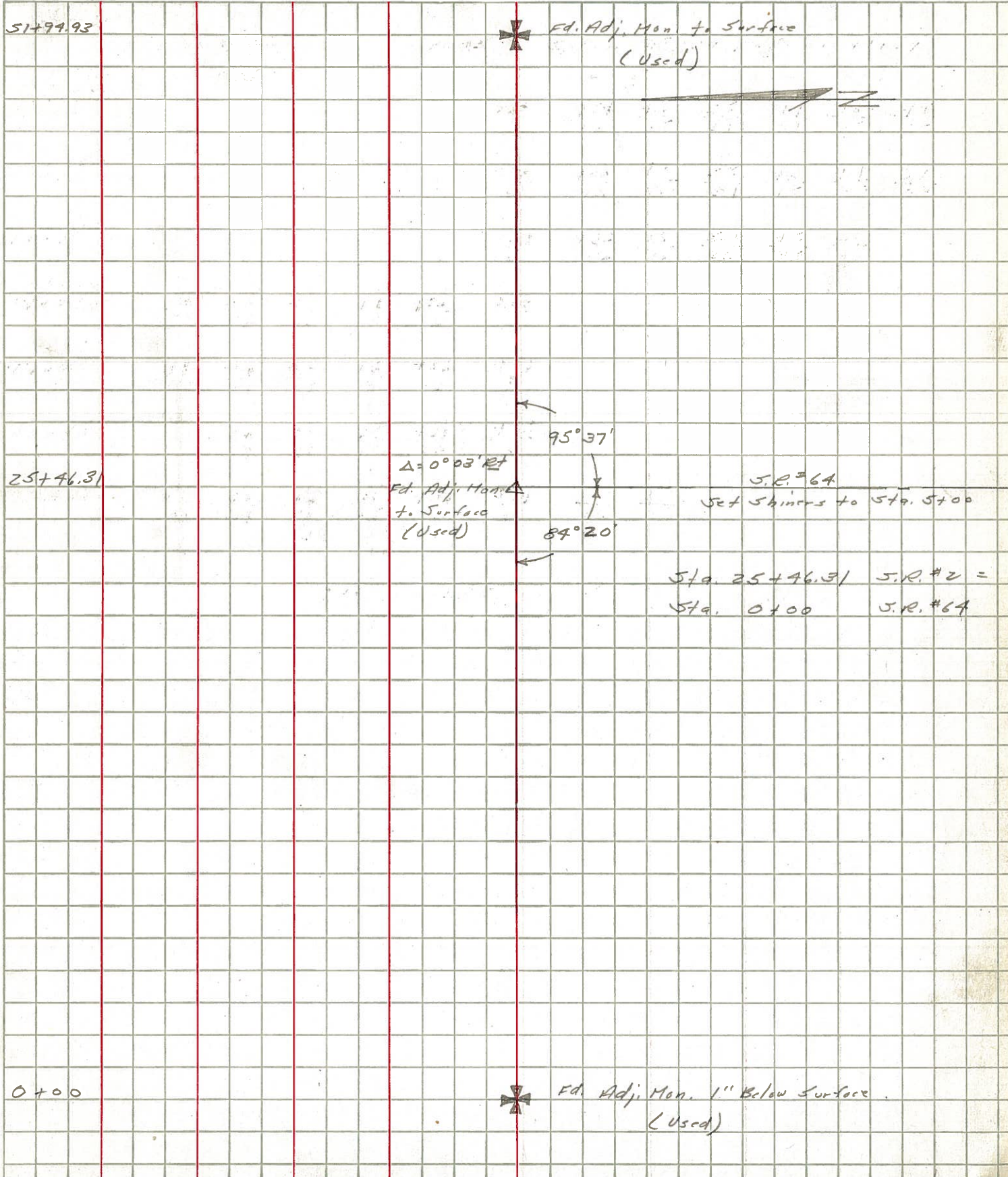
COUNTY Lucas DATE 5 Nov. 64

S. R. # 2 - 20A WEATHER Mild

SEC. \_\_\_\_\_ TEMP. 50°

DESCRIPTION Shorts JOB NO. \_\_\_\_\_

LEFT CENTER LINE RIGHT



PERSONNEL TITLE PERSONNEL TITLE

COUNTY Lucas DATE 5 Nov. 64

Stang

f

Crow

S. R. #2-20A WEATHER Mild

SEC. TEMP. 60°

DESCRIPTION

References to Control Pts.

JOB NO.

LEFT

CENTER LINE

RIGHT

0+00 =	E Hallet Rd. Fd. Adj. Mon. 1" Below Surface	✓	27.73' S.S.W. to Shiner in ♂ 38.24' N.W. to Shiner in ♂ 95.45' N.E. to S.W. Cor. Mocombo
25+46.31 =	E S.R. #64 Fd. Adj. Mon. at Surface	✓	70.55' S.E. to N.W. Cor. Bldg. 38.58' N.W. to Shiner in ♂ 40.42' N.E. to Shiner in ♂ 78.33' S.S.W. to Shiner in ♂
54+94.93 =	E Scott Rd. Fd. Adj. Mon. at Surface	✓	194.10' S. to Brass Cop in Con. Mon. 72.42' S.E. to N.W. Cor. House 59.16' S.W. to Shiner in 28" Tree 72.16' N.E. to S.W. Cor. Porch 38.42' N.W. to Shiner in ♂
78+32.31 =	E Girdham Fd. Adj. Mon. at Surface		54.68' N.N.E. to S.W. Cor. Bldg, 1st. Block 94.24' S.S.E. to Shiner in ♂ 104.66' S.W. to N.E. Cor. Con. Wall 66.52' S.E. to N.W. Cor. Bldg. at sidewalk
100+10.86 =	P.I. Δ = 4' 52" Lt. Fd. Adj. Mon. at Surface	✓	82.98' N.E. to Shiner in ♂ 31.40' N.N.W. to Shiner in 32" Tree 76.44' S.W. to Shiner in 11" Tree 29.16' S.S.E. to Shiner in ♂
104+87.00 =	E Wilkens Rd. M. Fd. 1 1/2" I. Pin at Surface		56.15' N.E. to Shiner in ♂ 49.95' S.E. to Shiner in ♂ 37.76' S.W. to Ref. Mon. 80.88' W.S.W. to Shiner in ♂
118+04.01 =	E Wilkens Rd. S. Fd. R.R. Spt. to Surface	✓	65.30' N.E. to Shiner in 18" Tree 33.44' N.N.W. to Shiner in ♂ 86.16' S.S.W. to Shiner in ♂