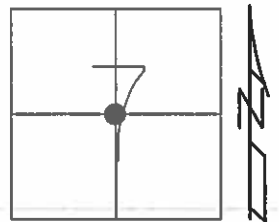


O.D.O.T. DISTRICT 2 SURVEY OFFICE (USE ONLY)

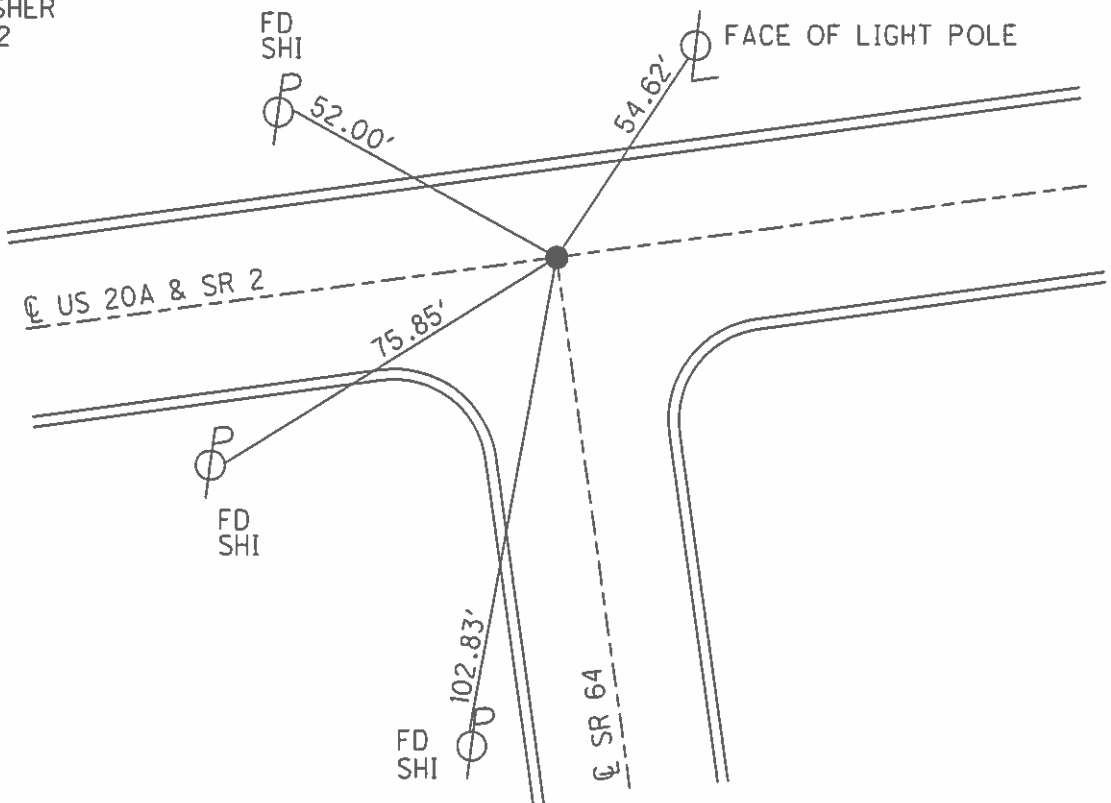
PERSONNEL _____ REFERENCE NO. 2 SHEET 2 OF 48
 NOTES HOMAN DATE 7/29/16 ROUTE US 20A
 H.C. HOMAN WEATHER CLOUDY COUNTY LUCAS
 R.C. KEFFER TEMP. 75°F TOWNSHIP SWANTON
 _____ SECTION 7
 _____ T 7 N R 5 E

TYPE MONUMENT MOBORA MON
~~ON SURFACE~~ - BELOW 2"
 LEFT - ☉ PAV'T - RIGHT ON
27.1' TO LT EDGE PAVEMENT
 S.L.M. 25+56



GRID: NORTHING: 700674.2558 EASTING: 1592809.771

RECORD:
 FD MOBORA MON
 6/15/03, DCH
 SET MAG/WASHER
 1/13/04, DCH
 FD MOBORA MON
 2" DOWN
 GPS, REF2
 7/29/16
 SET MAG/WASHER
 GPS, NEWREF2
 10/05/16



O.D.O.T. DISTRICT 2 SURVEY OFFICE (USE ONLY)

PERSONNEL _____ REFERENCE NO. 2 SHEET 2 OF 31

NOTES HOMAN DATE 7/29/16 ROUTE SR 2
H.C. HOMAN WEATHER CLOUDY COUNTY LUCAS
R.C. RYALL TEMP. 75°F TOWNSHIP SWANTON
SECTION 7
T 7 N R 5 E

TYPE MONUMENT MOBORA MON

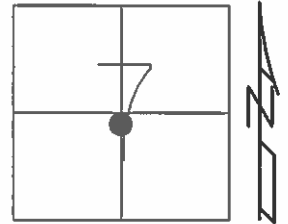
~~ON SURFACE~~ - BELOW 2"

LEFT - ☉ PAV'T - RIGHT ON

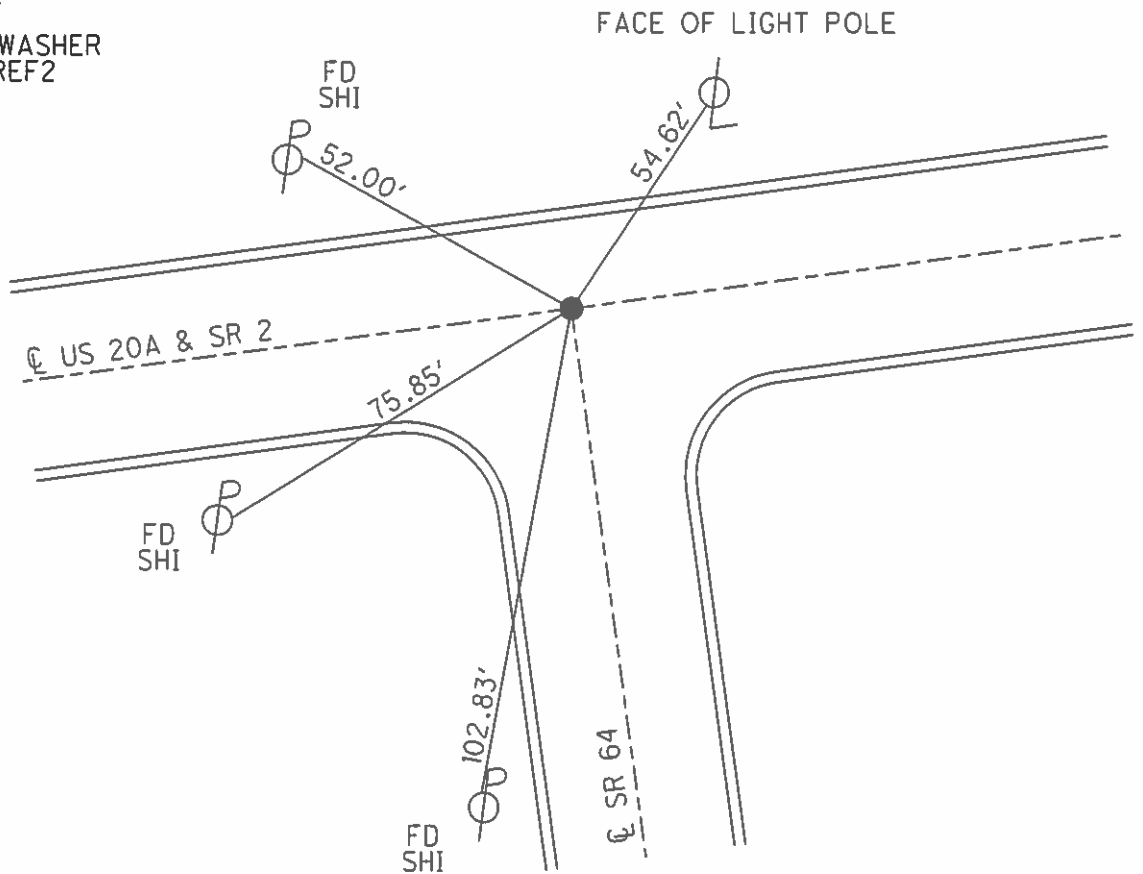
27.1' TO LT EDGE PAVEMENT

S.L.M. 25+56

GRID: NORTHING: 700674.2558 EASTING: 1592809.771



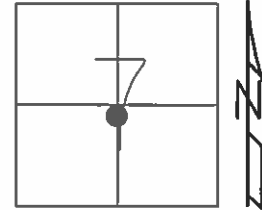
RECORD:
FD MOBORA MON.
6/15/03 DCH
SET MAG/WASH
1/13/04 DCH
FD MOBORA MON
2" DOWN
GPS, REF2
7/29/16
SET MAG/WASHER
GPS, NEWREF2
10/05/16



O.D.O.T. DISTRICT 2 SURVEY OFFICE (USE ONLY)

PERSONNEL _____ REFERENCE NO. 2 SHEET 2 OF 11
 NOTES HOMAN DATE 7-29-16 ROUTE SR 2
 H.C. HOMAN WEATHER CLOUDY COUNTY LUCAS
 R.C. RYALL TEMP. 75°F TOWNSHIP SWANTON
 _____ SECTION 7
 _____ T 7 N R 5 E

TYPE MONUMENT MOBORA MON
~~ON SURFACE~~ - BELOW 2"
 LEFT - ☉ PAV'T - RIGHT ON
27.1' TO LT EDGE PAVEMENT
 S.L.M. 25+56



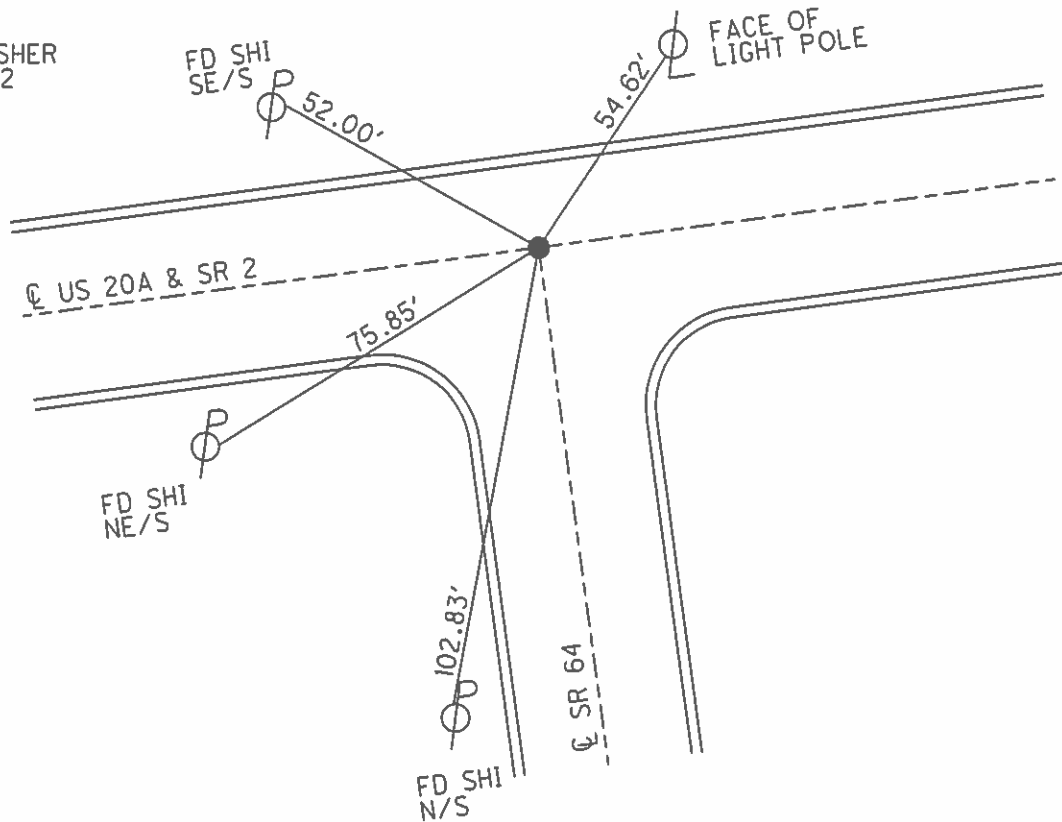
Grid: Northing: 700674.2558 Easting: 1592809.771

RECORD:
 FD. MOBORA MON.
 6-15-03 DCH

SET MAG/WASH
 1-13-04 DCH

FD MOBORA MON
 2" DOWN
 GPS, REF2
 7-29-16

SET MAG/WASHER
 GPS, NEWREF2
 10-05-16



O.D.O.T. DISTRICT 2 SURVEY OFFICE

SR 2 = #2 on US20A

PERSONNEL

REFERENCE NO. 57

SHEET 10 OF 10

NOTES HOMAN

DATE 6-15-03

ROUTE SR 64

H.C. HOMAN

WEATHER RAIN

COUNTY LUCAS

R.C. RYALL

TEMP. 75°

TOWNSHIP SWANTON

SECTION 7

T 7 N R 5 E

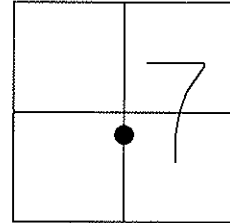
TYPE MONUMENT MAG NAIL & WASHER

ON SURFACE ~~-BELOW~~ YES

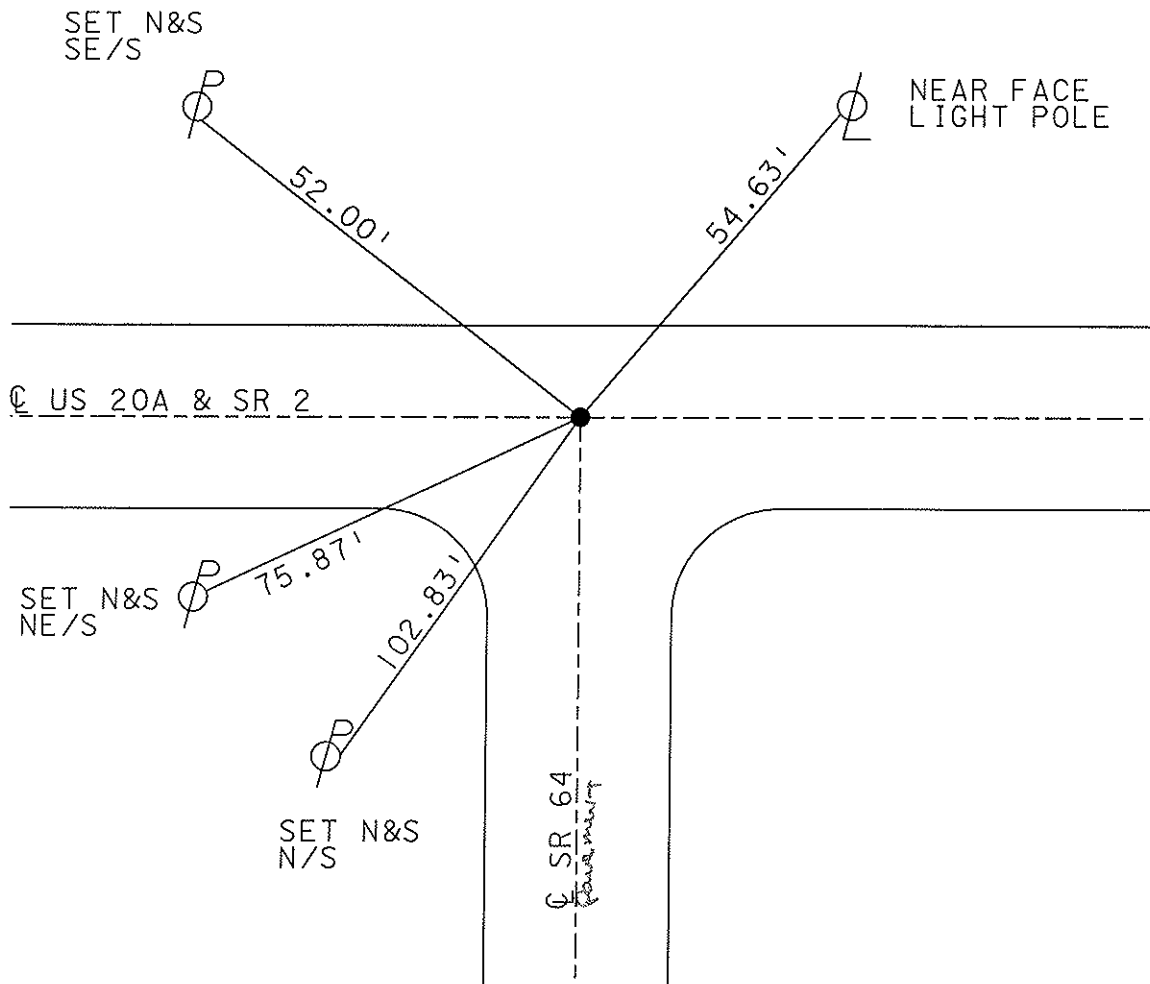
~~LEFT~~ - Q PAV'T ~~-RIGHT~~ YES

TO EDGE PAVEMENT

S.L.M. 25+26 ON US20-A-SR 2



SET MAG NAIL
& WASHER
1-13-04
DCH



County LUCAS S.R. U.S. 20-A

Date 9-25-80

Township SWANTON

Weather CLEAR

Section 7

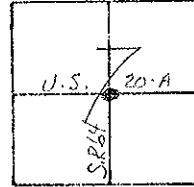
Temp. +68°

T1N, R5E

Personnel SMITH

BOWERS

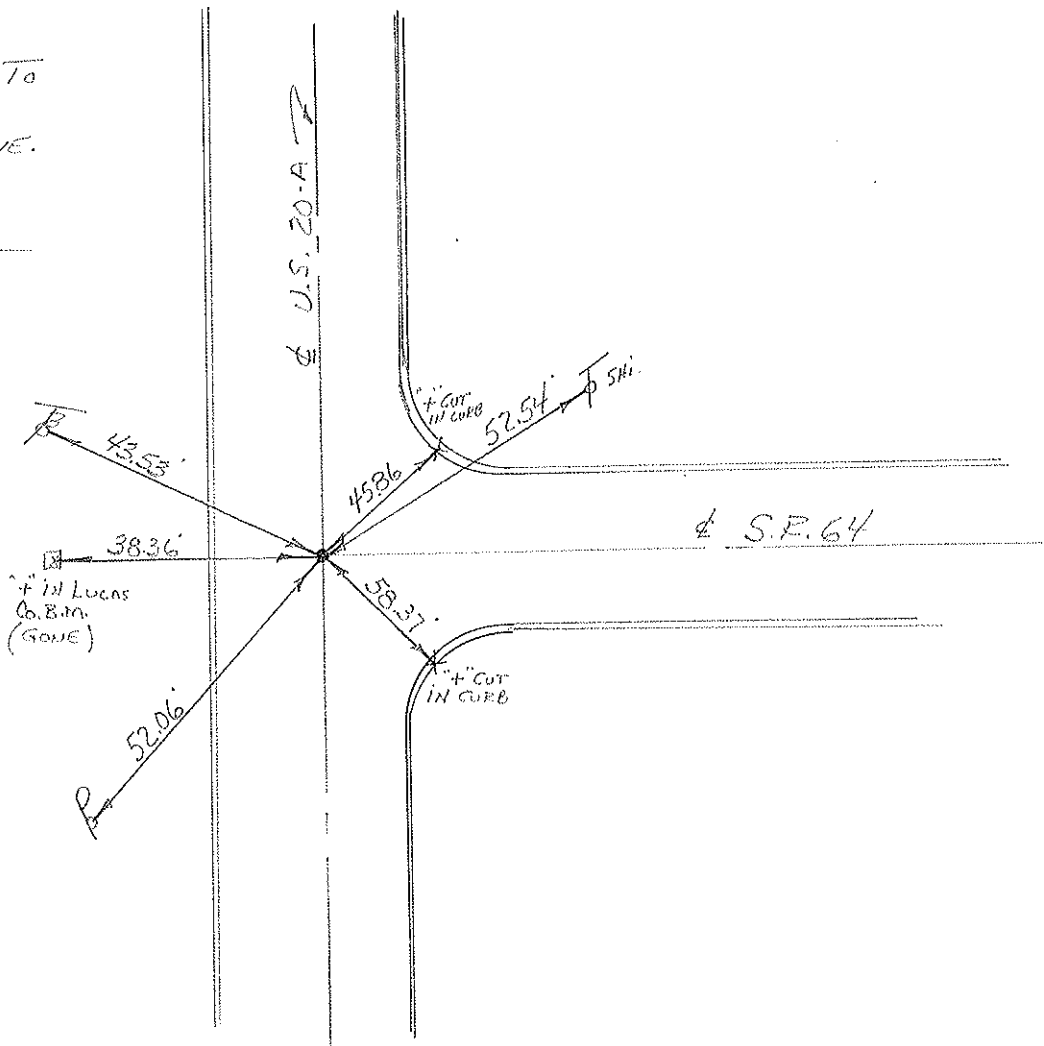
MEAD



0.48

#2

FD. MOBORA MON. TO
SURFACE.
27.1' TO N. EDGE PAVE.



PERSONNEL	TITLE	PERSONNEL	TITLE
Stone			
Crew			

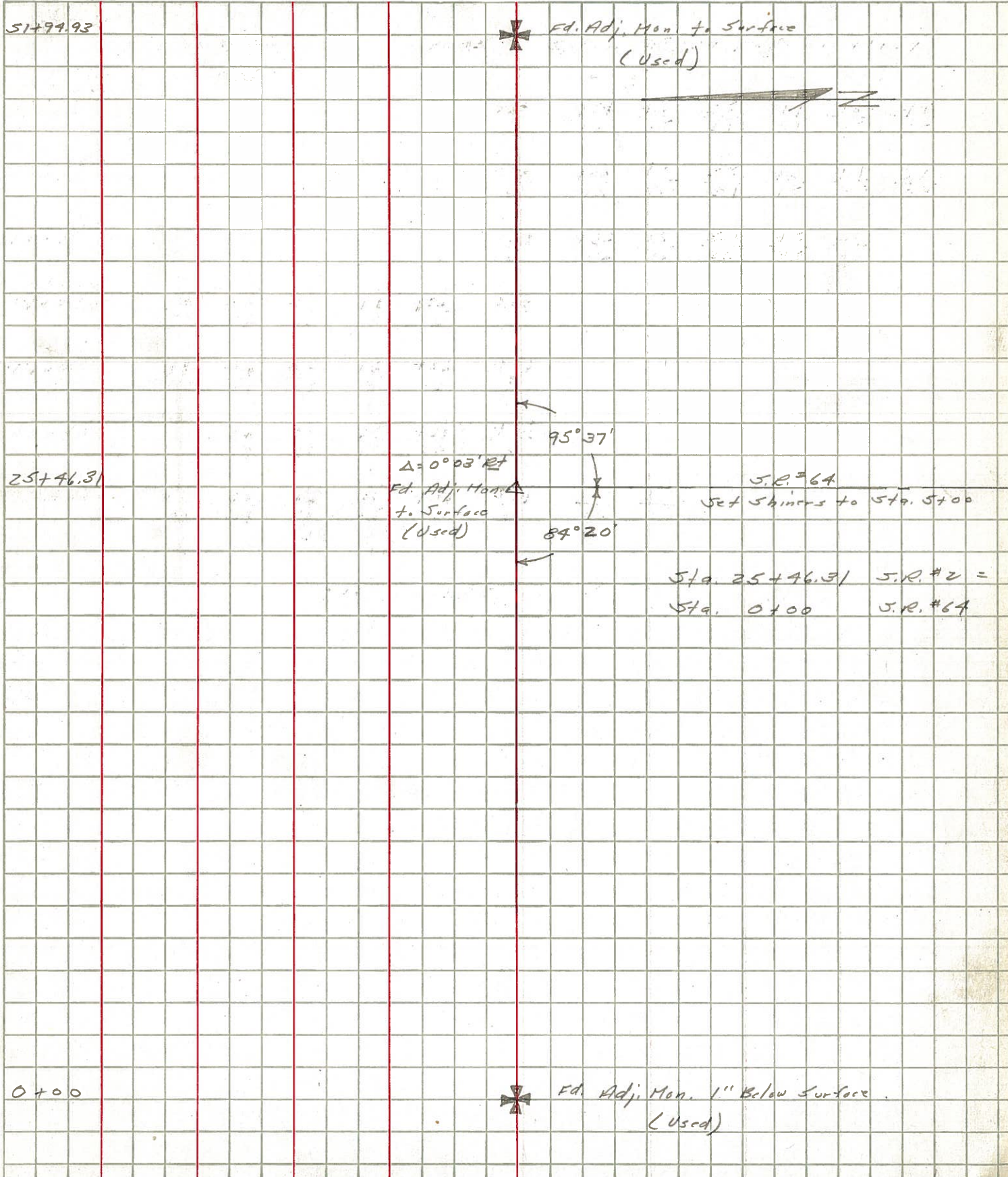
COUNTY Lucas DATE 5 Nov. 64

S. R. # 2 - 20A WEATHER Mild

SEC. _____ TEMP. 50°

DESCRIPTION Shorts JOB NO. _____

LEFT CENTER LINE RIGHT



PERSONNEL TITLE PERSONNEL TITLE

COUNTY Lucas DATE 5 Nov. 64

Stang
E
Crow

S. R. #2-20A WEATHER Mild

SEC. TEMP. 60°

DESCRIPTION References to Control Pts. JOB NO.

LEFT CENTER LINE RIGHT

0+00 =	E Hallet Rd. Fd. Adj. Mon. 1" Below Surface	✓	27.73' S.S.W. to Shiner in ♂ 38.24' N.W. to Shiner in ♂ 95.45' N.E. to S.W. Cor. Mocombo
25+46.31 =	E S.R. #64 Fd. Adj. Mon. at Surface	✓	70.55' S.E. to N.W. Cor. Bldg. 38.58' N.W. to Shiner in ♂ 40.42' N.E. to Shiner in ♂ 78.33' S.S.W. to Shiner in ♂
54+94.93 =	E Scott Rd. Fd. Adj. Mon. at Surface	✓	194.10' S. to Brass Cop in Con. Mon. 72.42' S.E. to N.W. Cor. House 59.16' S.W. to Shiner in 28" Tree 72.16' N.E. to S.W. Cor. Porch 38.42' N.W. to Shiner in ♂
78+32.31 =	E Girdham Fd. Adj. Mon. at Surface		54.68' N.N.E. to S.W. Cor. Bldg, 1st. Block 94.24' S.S.E. to Shiner in ♂ 104.66' S.W. to N.E. Cor. Con. Wall 66.52' S.E. to N.W. Cor. Bldg. at sidewalk
100+10.86 =	P.I. Δ = 4952' Lt. Fd. Adj. Mon. at Surface	✓	82.98' N.E. to Shiner in ♂ 31.40' N.N.W. to Shiner in 32" Tree 76.44' S.W. to Shiner in 11" Tree 29.16' S.S.E. to Shiner in ♂
104+87.00 =	E Wilkens Rd. M. Fd. 1 1/2" I. Pin at Surface		56.15' N.E. to Shiner in ♂ 49.95' S.E. to Shiner in ♂ 37.76' S.W. to Ref. Mon. 80.88' W.S.W. to Shiner in ♂
118+04.01 =	E Wilkens Rd. S. Fd. R.R. Spt. to Surface	✓	65.30' N.E. to Shiner in 18" Tree 33.44' N.N.W. to Shiner in ♂ 86.16' S.S.W. to Shiner in ♂