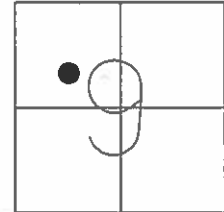


O.D.O.T. DISTRICT 2 SURVEY OFFICE (USE ONLY)

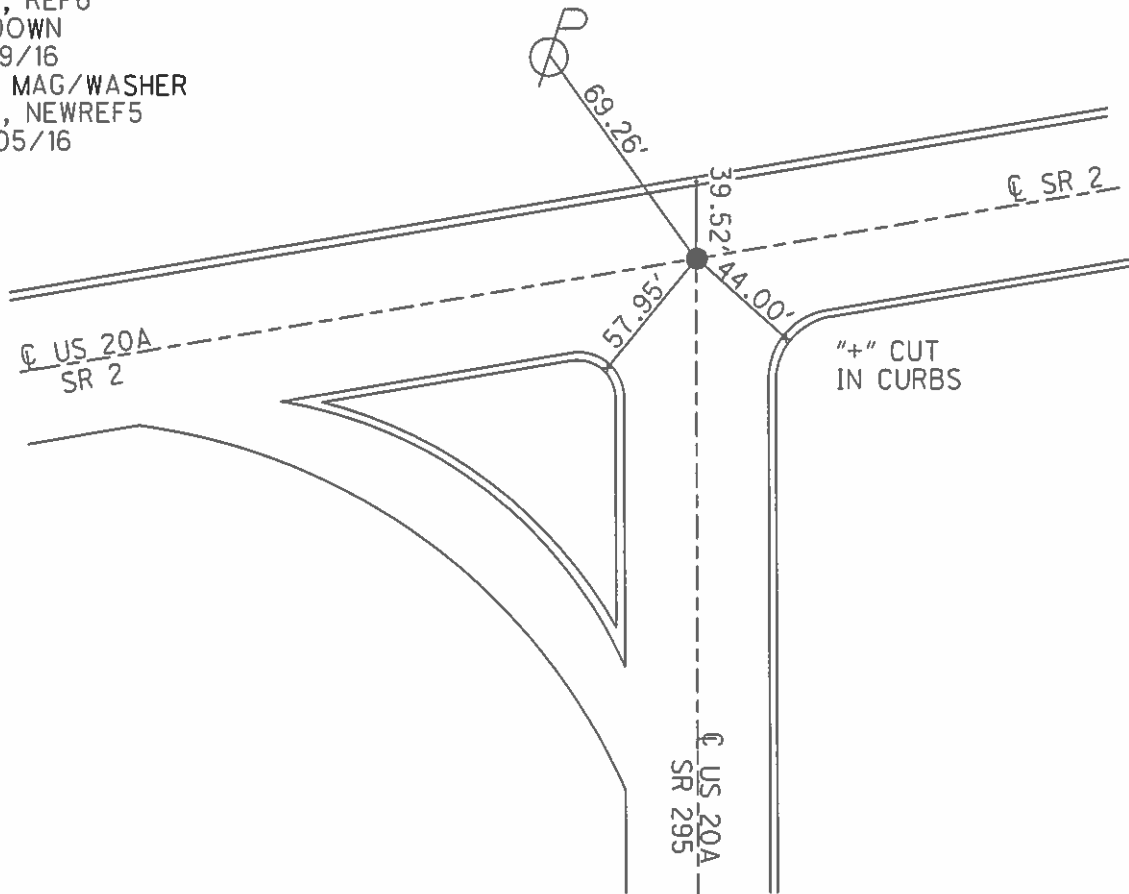
PERSONNEL _____ REFERENCE NO. 6 SHEET 7 OF 47
 NOTES HOMAN DATE 7/29/16 ROUTE US 20A
 H.C. HOMAN WEATHER CLOUDY COUNTY LUCAS
 R.C. KEFFER TEMP. 75°F TOWNSHIP SWANTON
 _____ SECTION 9
 _____ T 7 N R 9 E

TYPE MONUMENT RR SPIKE
~~ON SURFACE~~ - BELOW 8"
 LEFT - ☉ PAV'T - RIGHT ON
- TO - EDGE PAVEMENT
 S.L.M. 117+74.4



GRID: NORTHING: 701562.9063 EASTING: 1602020.194

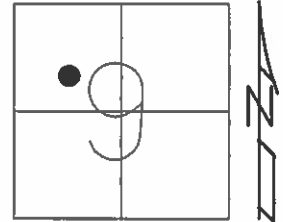
RECORD:
 FD RR SPIKE
 1" DOWN
 6/15/03
 SET MAG/WASHER
 1/13/04
 GPS, REF6
 8" DOWN
 7/29/16
 SET MAG/WASHER
 GPS, NEWREF5
 10/05/16



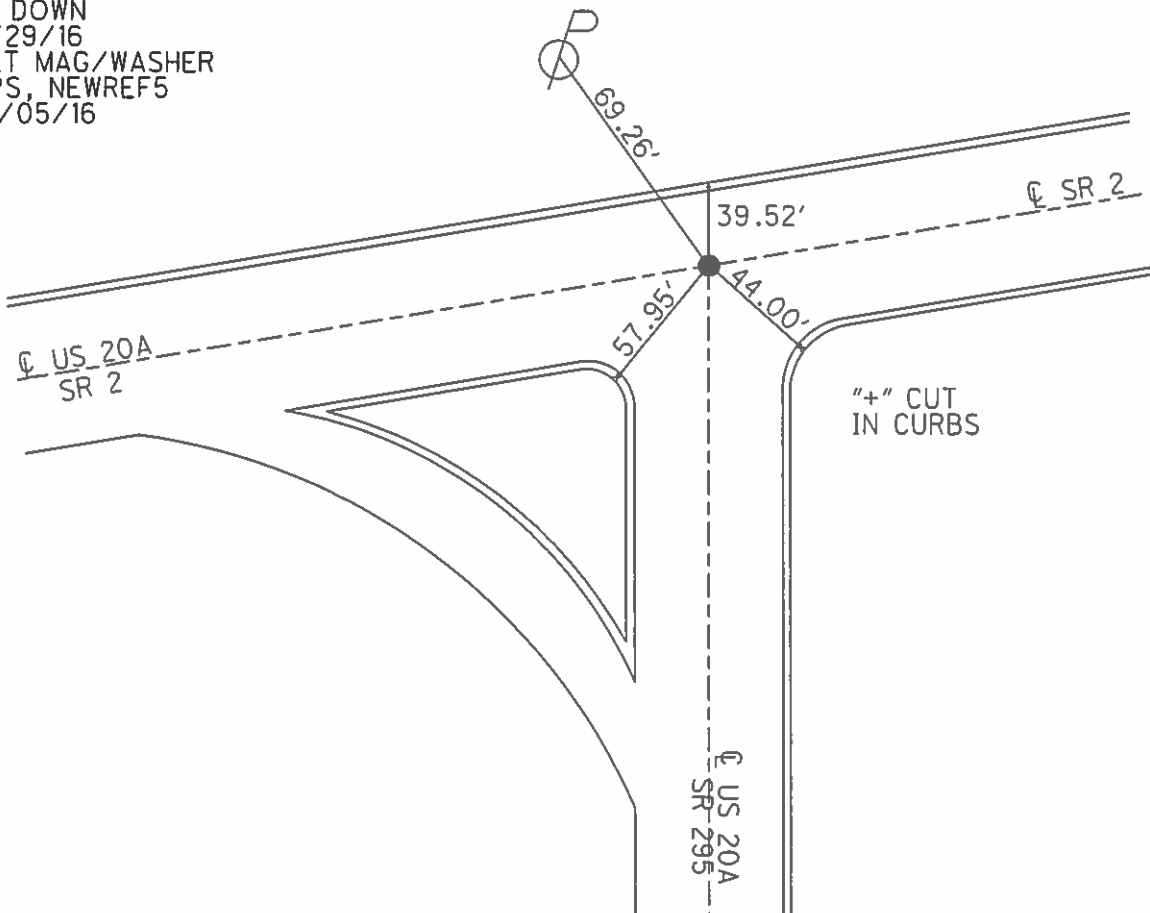
O.D.O.T. DISTRICT 2 SURVEY OFFICE (USE ONLY)

PERSONNEL _____ REFERENCE NO. 6 SHEET 7 OF 31
NOTES HOMAN DATE 7/29/16 ROUTE SR 2
H.C. HOMAN WEATHER CLOUDY COUNTY LUCAS
R.C. RYALL TEMP. 75°F TOWNSHIP SWANTON
SECTION 9
T 7 N R 9 E

TYPE MONUMENT RR SPIKE
~~ON SURFACE~~ - BELOW 8"
LEFT - ☉ PAV'T - RIGHT ON
- TO - EDGE PAVEMENT
S.L.M. 117+74.4
GRID: NORTHING 701562.9063 EASTING: 1602020.194



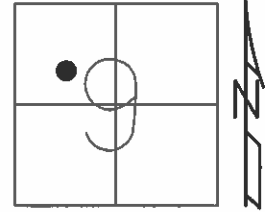
RECORD:
FD RR SPIKE
1" DOWN
6/15/03
SET MAG/WASHER
1/13/04
GPS, REF6
8" DOWN
7/29/16
SET MAG/WASHER
GPS, NEWREF5
10/05/16



O.D.O.T. DISTRICT 2 SURVEY OFFICE (USE ONLY)

PERSONNEL _____ REFERENCE NO. 6 SHEET 7 OF 11
 NOTES HOMAN DATE 7-29-16 ROUTE SR 2
 H.C. HOMAN WEATHER CLOUDY COUNTY LUCAS
 R.C. RYALL TEMP. 75°F TOWNSHIP SWANTON
 _____ SECTION 9
 _____ T 7 N R 9 E

TYPE MONUMENT R.R.SPIKE
~~ON SURFACE~~ - BELOW 8"
 LEFT - ☉ PAV'T - RIGHT ON
- TO - EDGE PAVEMENT
 S.L.M. 117+74.4



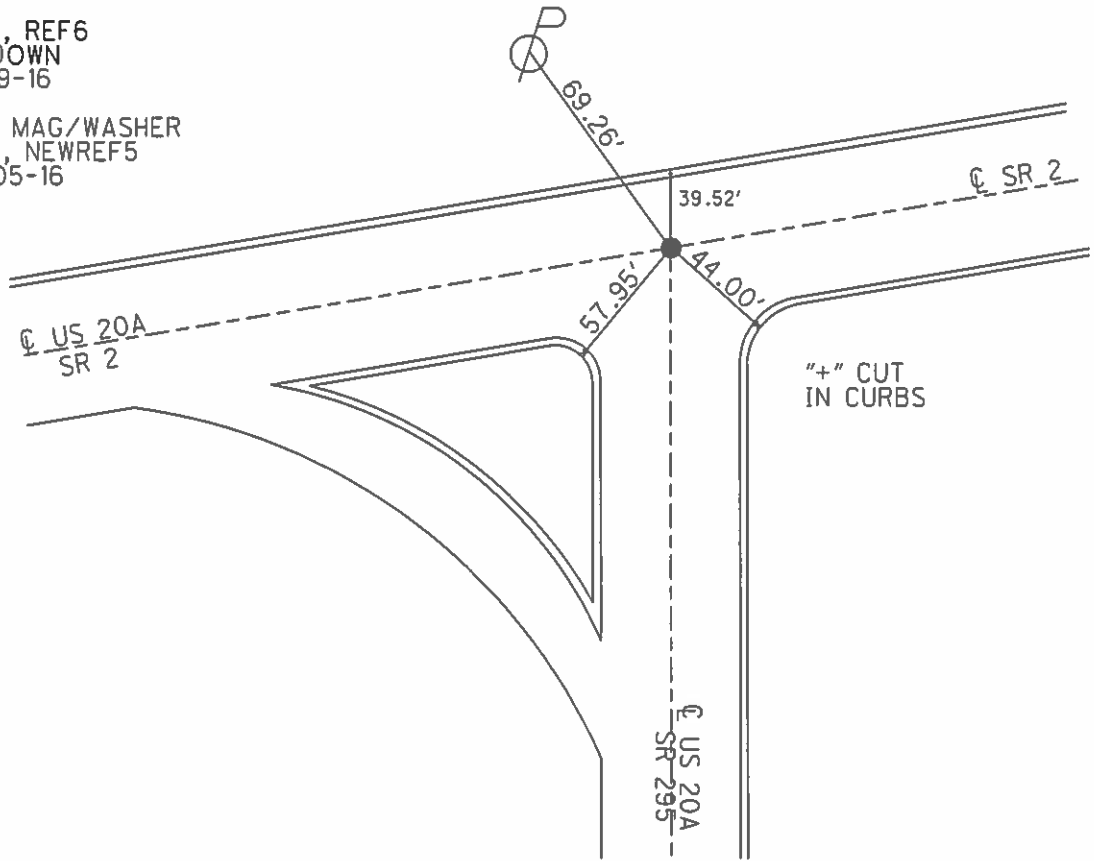
Grid: Northing: 701562.9063 Easting: 1602020.194

RECORD:
 FD RR. SPIKE
 1" DOWN
 6-15-03

SET MAG/WASHER
 1-13-04

GPS, REF6
 8" DOWN
 7-29-16

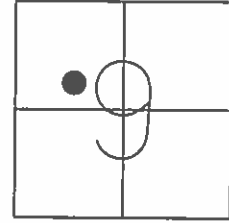
SET MAG/WASHER
 GPS, NEWREF5
 10-05-16



O.D.O.T. DISTRICT 2 SURVEY OFFICE (USE ONLY)

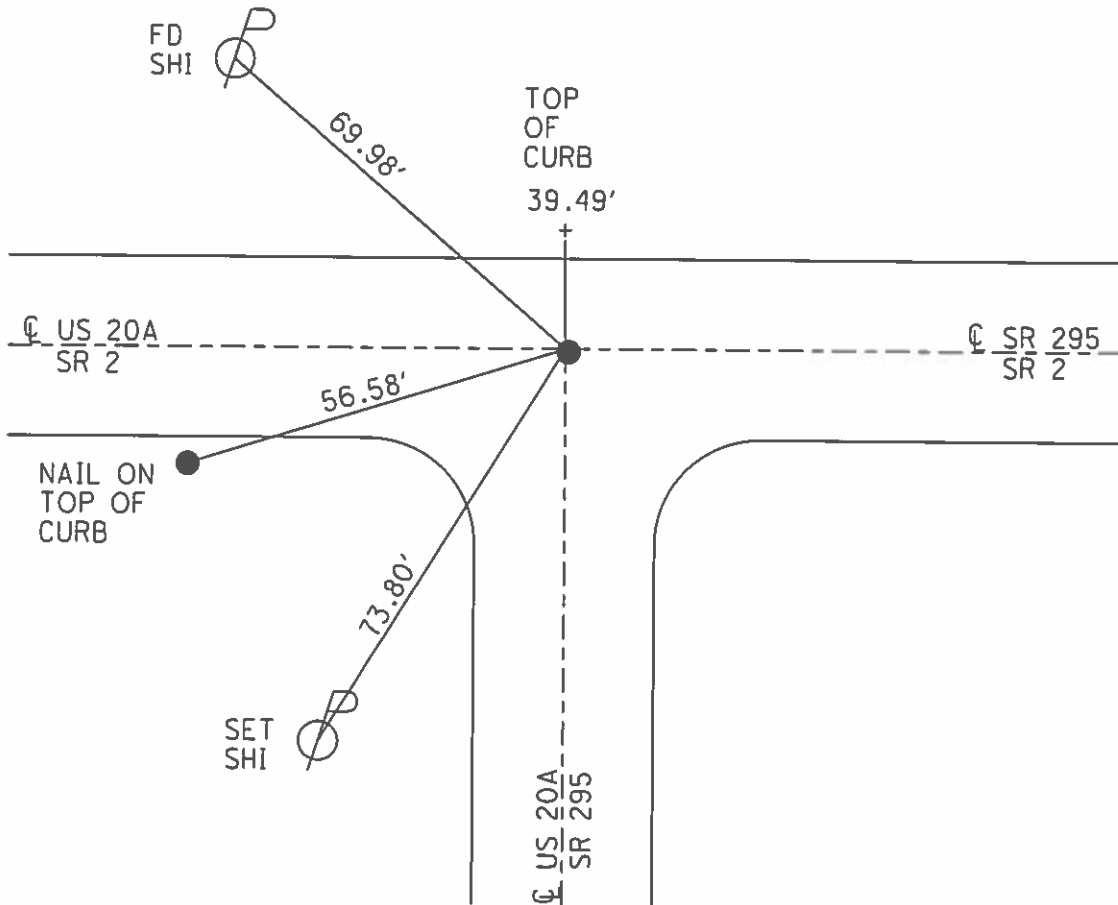
PERSONNEL _____ REFERENCE NO. 6 SHEET -1 OF -42
 NOTES _____ DATE 6/15/03 ROUTE US 20A
 H.C. HOMAN WEATHER FAIR COUNTY LUCAS
 R.C. RYALL TEMP. 75° TOWNSHIP SWANTON
 _____ SECTION 9
 _____ T 7 N R 5 E

TYPE MONUMENT R.R.SPIKE
 ON SURFACE - ~~BELOW~~ 1"
 LEFT - Q PAV'T - RIGHT ON
- TO - EDGE PAVEMENT
 S.L.M. 117+74.4



GRID: NORTHING: 701563.015 EASTING: 1602020.076

SET MAG/WASHER
 1/13/04, DCH
 GPS, REF6
 4/6/11, KPM



PERSONNEL TITLE PERSONNEL TITLE

COUNTY Lucas DATE 5 Nov. 64

Stang
E
Crow

S. R. #2-20A WEATHER Mild

SEC. TEMP. 60°

DESCRIPTION *References to Control Pts.* JOB NO.

LEFT CENTER LINE RIGHT

04+00 =	E Hallet Rd. Fd. Adj. Mon. 1" Below Surface	✓	27.73' S.S.W. to Shiner in ♂ 38.24' N.W. to Shiner in ♂ 95.45' N.E. to S.W. Cor. Mocombo
25+46.31 =	E S.R. #64 Fd. Adj. Mon. at Surface	✓	70.55' S.E. to N.W. Cor. Bldg. 38.58' N.W. to Shiner in ♂ 40.42' N.E. to Shiner in ♂ 78.33' S.S.W. to Shiner in ♂
54+94.93 =	E Scott Rd. Fd. Adj. Mon. at Surface	✓	194.10' S. to Brass Cop in Con. Mon. 72.42' S.E. to N.W. Cor. House 59.16' S.W. to Shiner in 28" Tree 72.16' N.E. to S.W. Cor. Porch 38.42' N.W. to Shiner in ♂
78+32.31 =	E Girdham Fd. Adj. Mon. at Surface		54.68' N.N.E. to S.W. Cor. Bldg, 1st. Block 94.24' S.S.E. to Shiner in ♂ 104.66' S.W. to N.E. Cor. Con. Wall 66.52' S.E. to N.W. Cor. Bldg. at sidewalk
100+10.86 =	P.I. Δ = 4952' Lt. Fd. Adj. Mon. at Surface	✓	82.98' N.E. to Shiner in ♂ 31.40' N.N.W. to Shiner in 32" Tree 76.44' S.W. to Shiner in 11" Tree 29.16' S.S.E. to Shiner in ♂
104+87.00 =	E Wilkens Rd. M. Fd. 1 1/2" I. Pin at Surface		56.15' N.E. to Shiner in ♂ 49.95' S.E. to Shiner in ♂ 37.76' S.W. to Ref. Mon. 80.88' W.S.W. to Shiner in ♂
118+04.01 =	E Wilkens Rd. S. Fd. R.R. Spt. to Surface	✓	65.30' N.E. to Shiner in 18" Tree 33.44' N.N.W. to Shiner in ♂ 86.16' S.S.W. to Shiner in ♂