

O.D.O.T. DISTRICT 2 SURVEY OFFICE (USE ONLY)

PERSONNEL _____ REFERENCE NO. 7 SHEET 8 OF 48

NOTES WESTFALL DATE 8/2/13 ROUTE US 20A
H.C. ROUSOS WEATHER SUNNY COUNTY LUCAS
R.C. WESTFALL TEMP. 70° TOWNSHIP SWANTON
KEFFER SECTION 9
T 7 N R 9 E

TYPE MONUMENT 2" SQ. BOLT

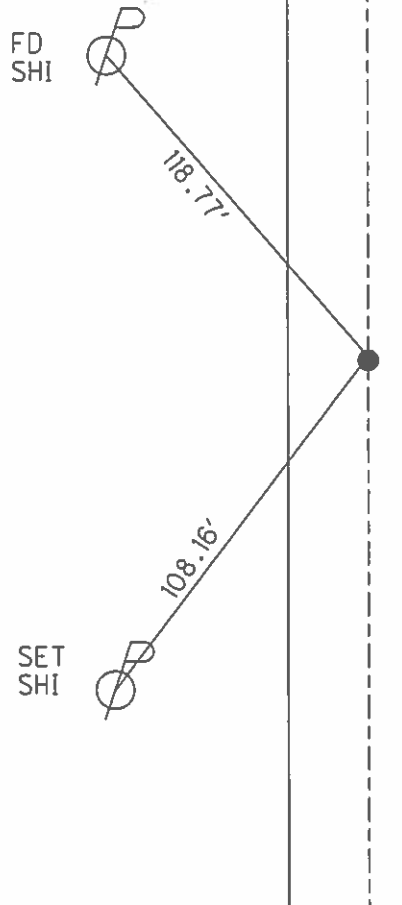
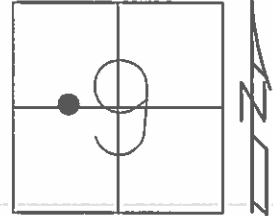
~~ON SURFACE~~ - BELOW 2"

LEFT - ☉ PAV'T - RIGHT - _____

_____ TO _____ EDGE PAVEMENT

S.L.M. 127+56.65

GRID: NORTHING: 700580.729 EASTING: 1602019.061



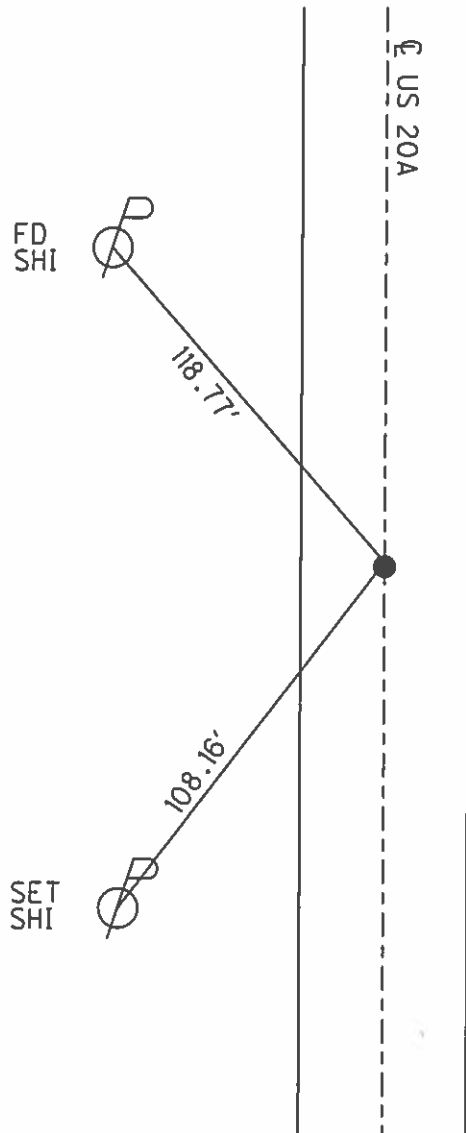
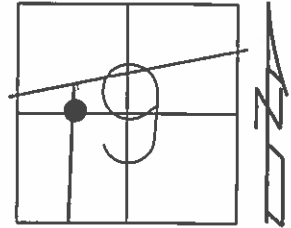
RECORD:
FD SQ BOLT
3" DEEP
6/28/85, I.S.
FD SQ BOLT
GPS, REF7
12/6/11, DCH
SET MAG/WASHER
GPS, NEWREF7
4/11/14, DCH

O.D.O.T. DISTRICT 2 SURVEY OFFICE (USE ONLY)

PERSONNEL _____ REFERENCE NO. 7 SHEET 2 OF 42
 NOTES WESTFALL DATE 8/2/13 ROUTE US 20A
 H.C. ROUSOS WEATHER SUNNY COUNTY LUCAS
 R.C. WESTFALL TEMP. 70° TOWNSHIP SWANTON
 _____ SECTION 9
 _____ T 7 N R 9 E

TYPE MONUMENT 2" SQ. BOLT
~~ON SURFACE~~ - BELOW 2"
 LEFT - ☉ PAV'T - RIGHT - _____
 - TO - EDGE PAVEMENT
 S.L.M. 127+56.65

Grid: Northing: 700580.729 Easting: 1602019.061



FD SQ. BOLT
 3" DEEP
 6/28/85, I.S.

FD SQ. BOLT
 GPS, REF7
 12/6/11, DCH

SET MAG/WASHER
 GPS, NEWREF7
 4/11/14, DCH

PERSONNEL TITLE PERSONNEL TITLE

COUNTY Lucas DATE 5 Nov. 64

Stone

S. R. # 2-20A WEATHER Mild

£

Crew

SEC. TEMP. 62°

DESCRIPTION References to Control Pts. JOB NO.

LEFT CENTER LINE RIGHT

134+37.41 = N. E.S. £ Sec. 9
Fd. 1" I. Pin 1" Below Surface

34.26' N. to shiner in £
72.58' N.W. to S.E. Cor. House (2nd Block)
67.22' S.W. to shiner in £
54.58' S.S.W. to Shiner in £

See Sh #90-X for added detail

134+03.71 = P.I. Δ = 16° 01' Lt.
Fd. 1" I. Pin at Surface

48.34' N. to Shiner in £
53.40' S.W. to Shiner in £
73.39' S.S.E. to Shiner in £

159+92.90 = £ 295
Fd. 1" I. Pin in Mon. Box

45.54' S.S.E. to Chiseled "T" in Sign Post
100.37' N.E. to Shiner in £
60.44' N.W. to S.E. Cor. Bldg. (2nd Block)

" FINIS "