

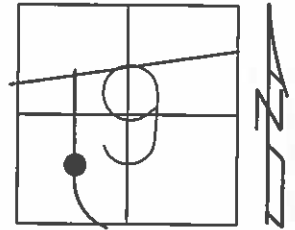
O.D.O.T. DISTRICT 2 SURVEY OFFICE (USE ONLY)

PERSONNEL _____ REFERENCE NO. 9 SHEET 3 OF 42

NOTES WESTFALL DATE 8/2/13 ROUTE US 20A
 H.C. ROUSOS WEATHER SUNNY COUNTY LUCAS
 R.C. WESTFALL TEMP. 70° TOWNSHIP SWANTON
 _____ SECTION 9
 _____ T 7 N R 9 E

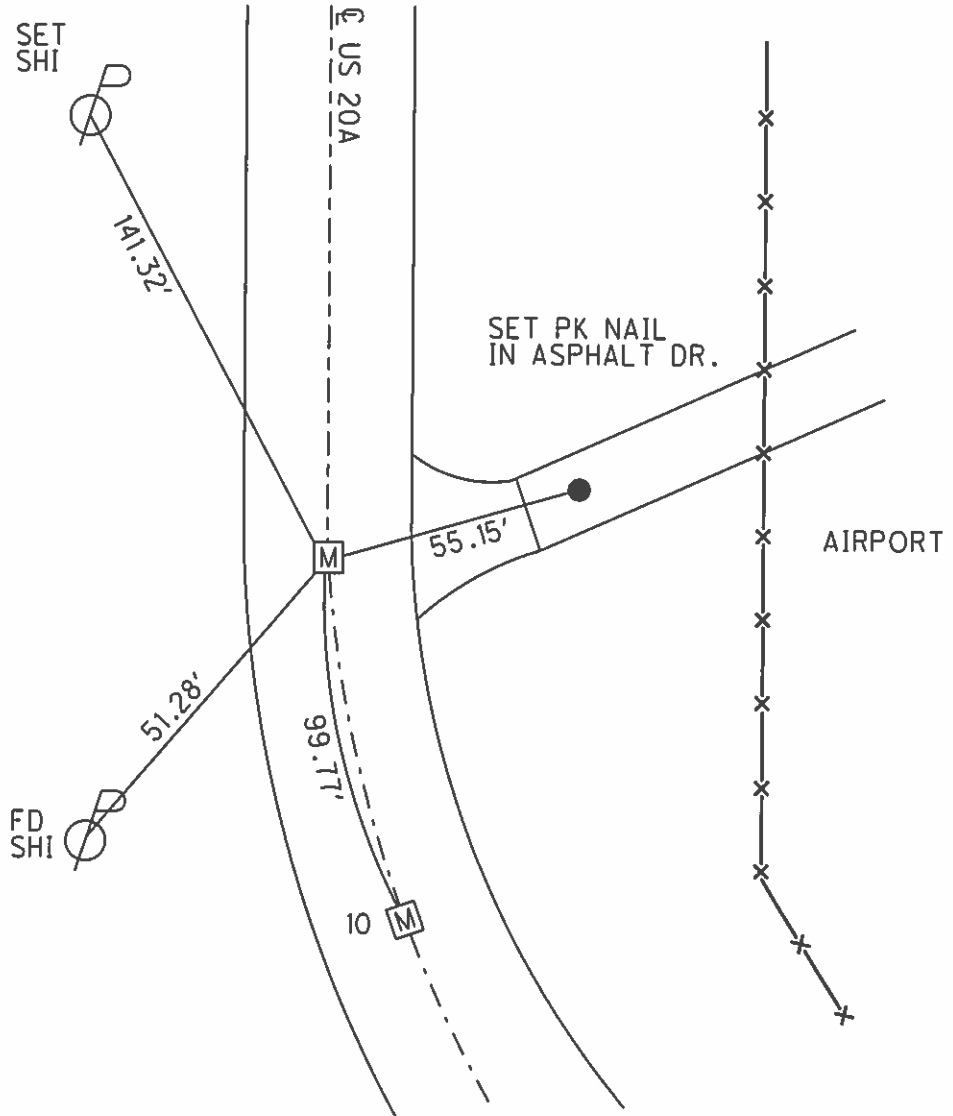
TYPE MONUMENT MONBOX
 ON SURFACE - ~~BELOW~~ ON _____
 LEFT - ☉ PAV'T - RIGHT - _____
 - TO - EDGE PAVEMENT
 S.L.M. 139+38.89

Grid: Northing: 699398.513 Easting: 1602016.865



FD 1" IPIN
 IN MONBOX
 GPS, SV3985
 12/6/11, DCH

 GPS, NEWREFA7
 4/11/14, DCH



PERSONNEL TITLE PERSONNEL TITLE

COUNTY Lucas DATE 5 Nov. 64

Stone
f
Crew

S. R. # 2-20A WEATHER Mild

SEC. TEMP. 62°

DESCRIPTION References to Control Pts. JOB NO.

LEFT CENTER LINE RIGHT

134+37.41 = N. E.S. & Sec. 9
Fd. 1" I. Pin 1" Below Surface

See Sh #90-X
for added detail

34.26' N. to shiner in f
72.58' N.W. to S.E. Cor. House (2nd Block)
67.22' S.W. to shiner in f
54.58' S.S.W. to Shiner in f

134+03.71 = P.I. Δ = 16° 01' Lt.
Fd. 1" I. Pin at Surface

48.34' N. to Shiner in f
53.40' S.W. to Shiner in f
73.39' S.S.E. to Shiner in f

159+92.90 = f 295
Fd. 1" I. Pin in Mon. Box

45.54' S.S.E. to Chiseled "T" in Sign Post
100.37' N.E. to Shiner in f
60.44' N.W. to S.E. Cor. Bldg. (2nd Block)

" FINIS "